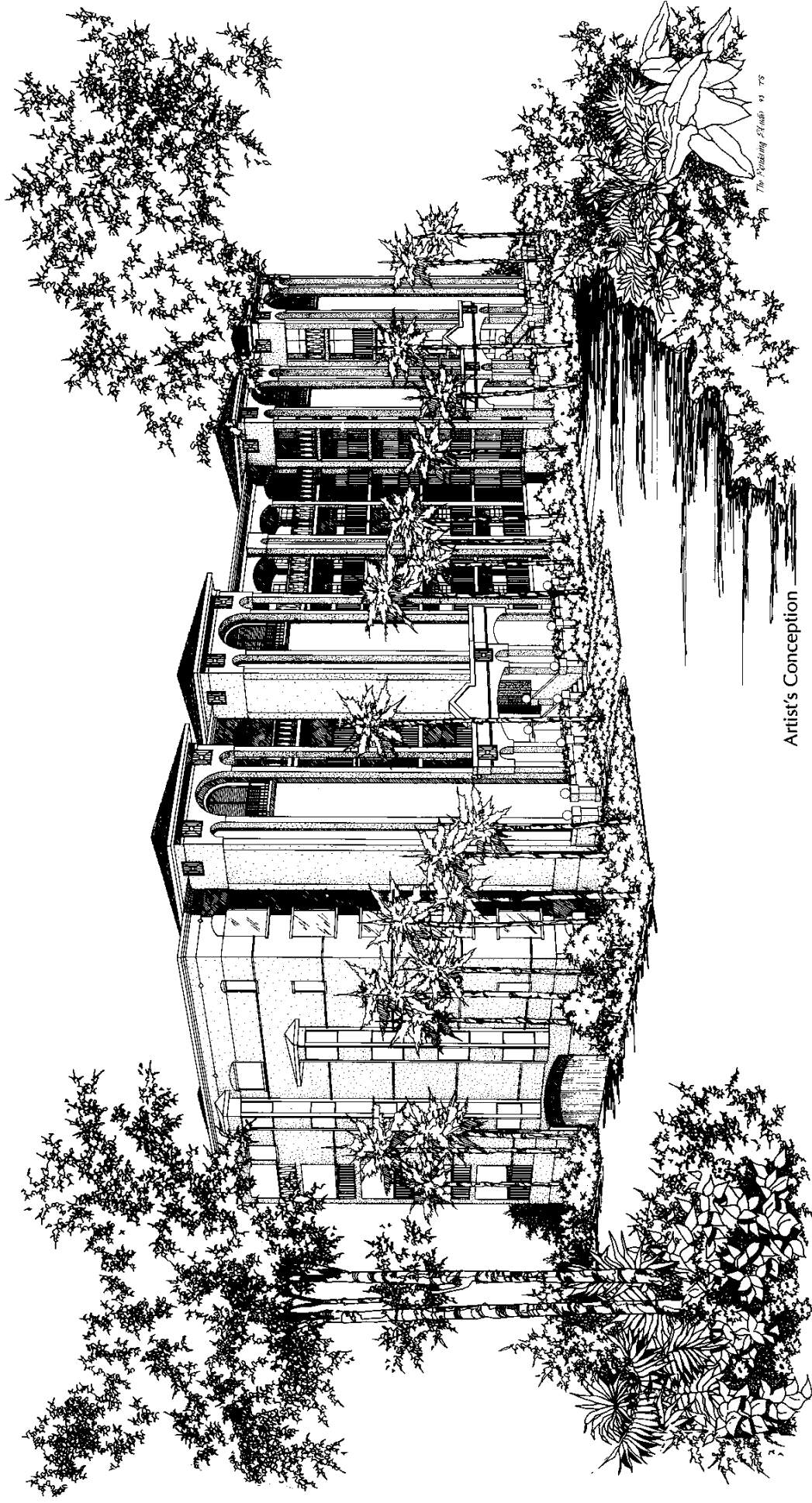
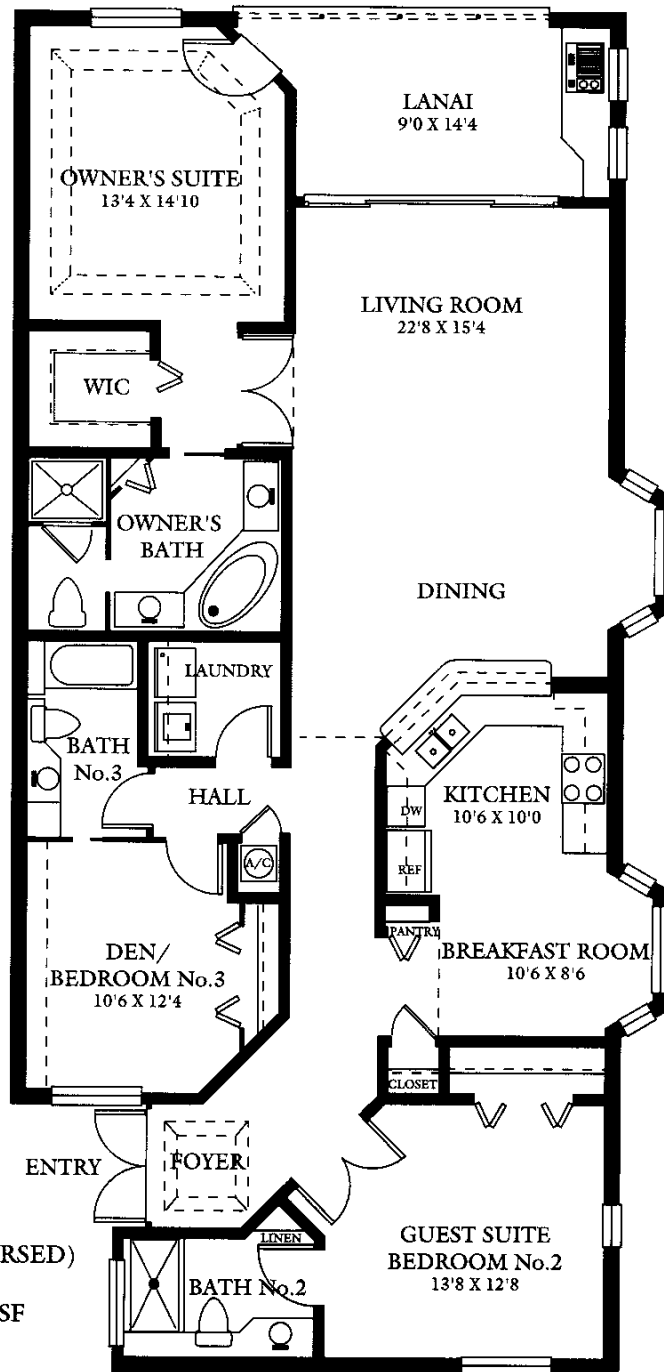


# 5 STORY BUILDING



Artist's Conception

# DORAL

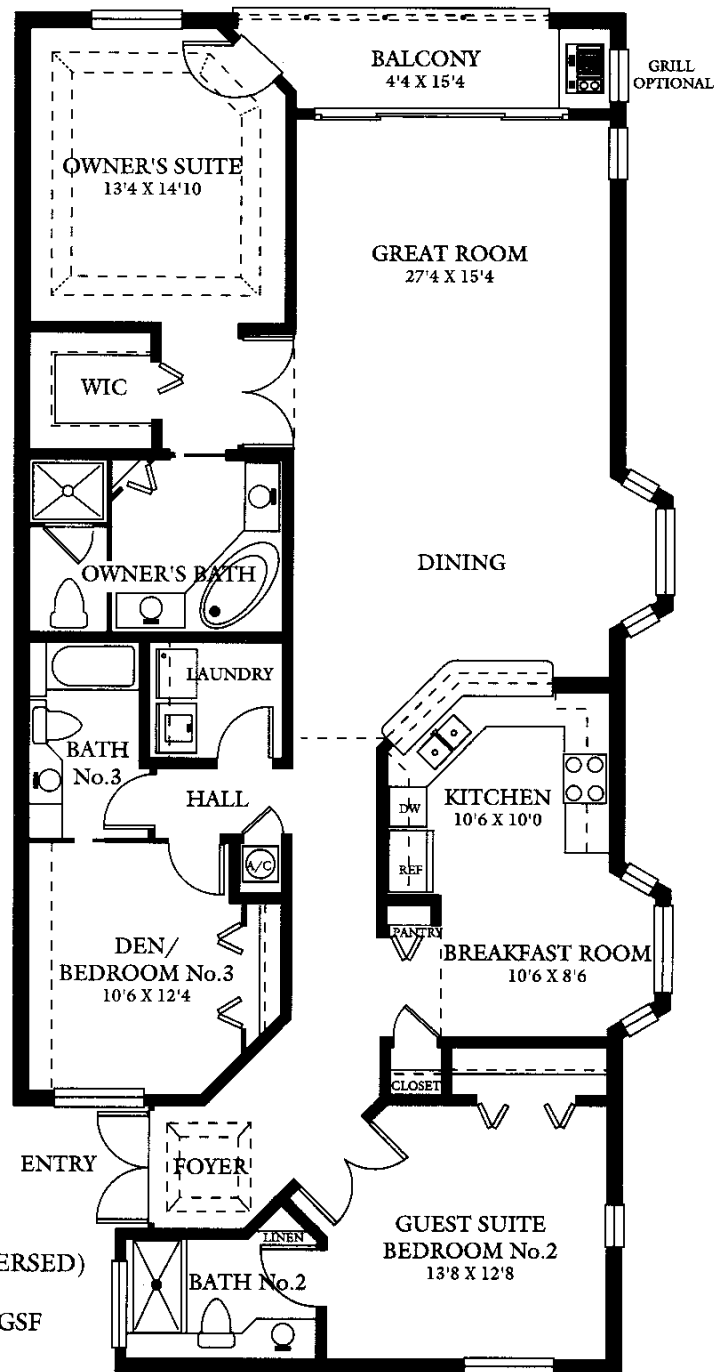


UNITS 206, 306, & 406  
(UNITS 201, 301, & 401 - REVERSED)

GROSS LIVING AREA: 1813 GSF  
SCREENED LANAI: 153  
TOTAL AREA: 1966

All graphic depictions, including dimensions and area, are approximate and subject to change without notice. Oral representations cannot be relied upon as correctly stating representation of the developer. For correct representations, make reference to the documents required by FLORIDA STATUTES SECTION 718.503 to be furnished by the developer to the buyer or lessee.

# DORAL - FLORIDA OPTION

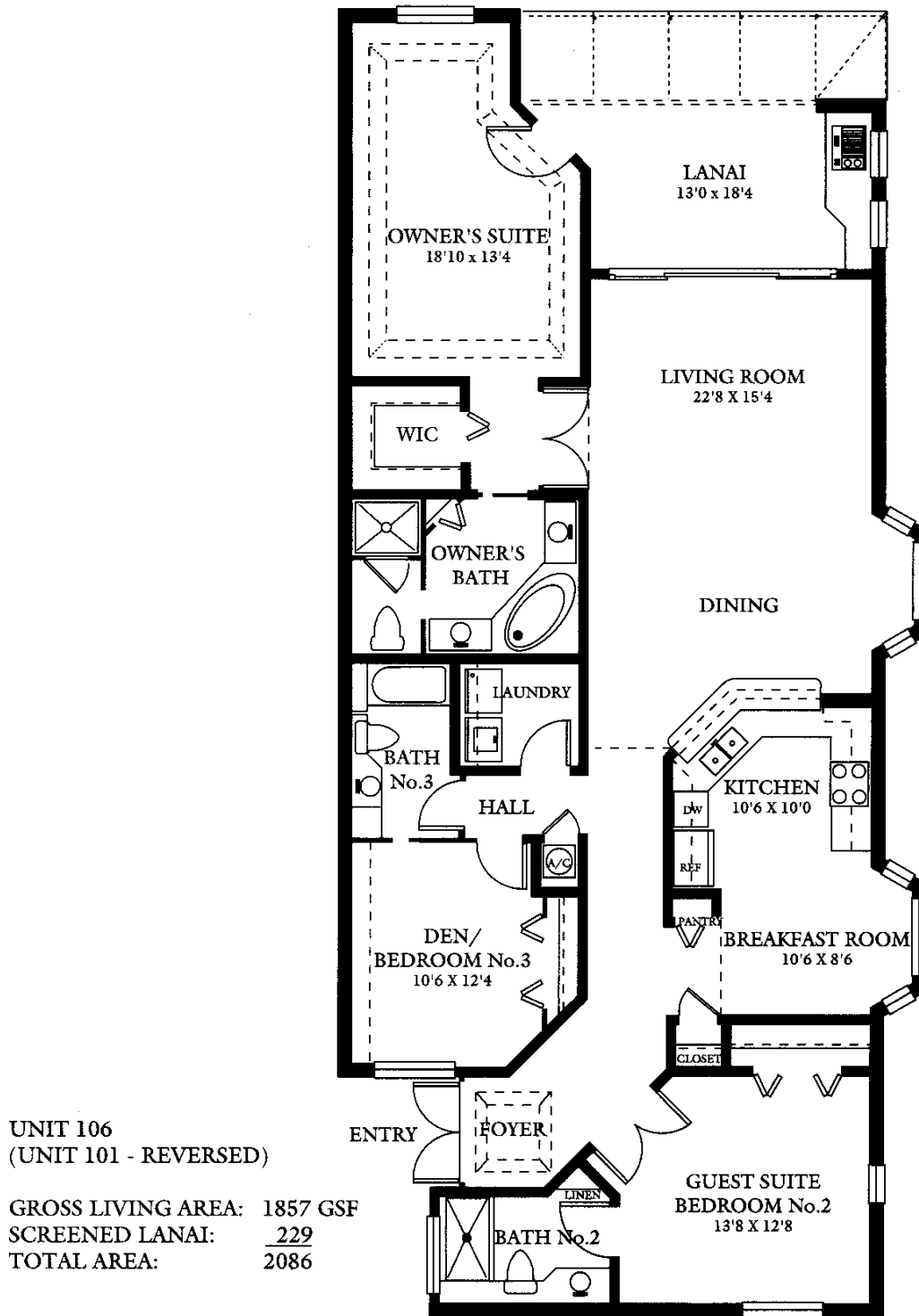


UNITS 206, 306 & 406  
(UNITS 201, 301, & 401 - REVERSED)

GROSS LIVING AREA: 1890 GSF  
SCREENED BALCONY: 76  
TOTAL AREA: 1966

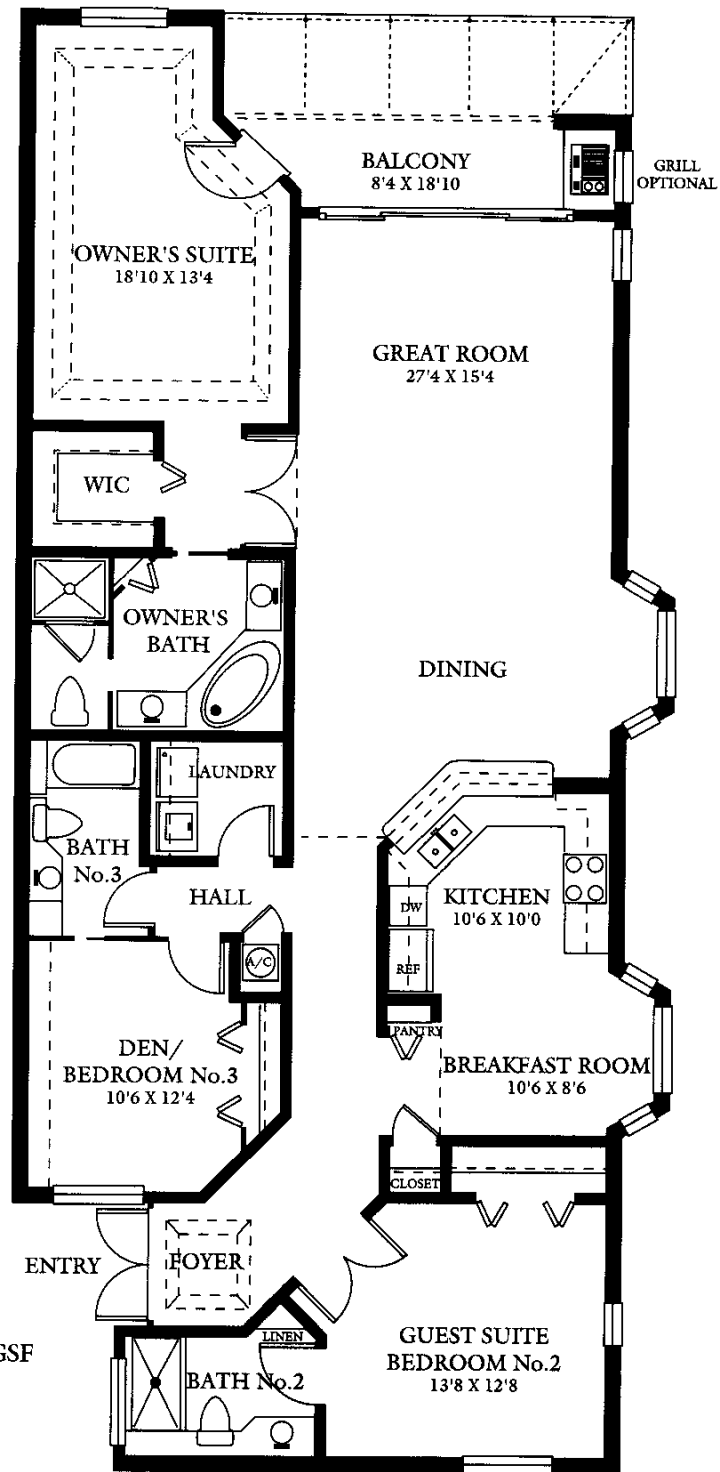
All graphic depictions, including dimensions and area, are approximate and subject to change without notice. Oral representations cannot be relied upon as correctly stating representation of the developer. For correct representations, make reference to the documents required by FLORIDA STATUTES SECTION 718.503 to be furnished by the developer to the buyer or lessee.

# DORAL - FIRST FLOOR



All graphic depictions, including dimensions and area, are approximate and subject to change without notice. Oral representations cannot be relied upon as correctly stating representation of the developer. For correct representations, make reference to the documents required by FLORIDA STATUTES SECTION 718.503 to be furnished by the developer to the buyer or lessee.

# DORAL - FLORIDA OPTION FIRST FLOOR



UNIT 106  
(UNIT 101 - REVERSED)

GROSS LIVING AREA: 1931 GSF  
SCREENED BALCONY: 155  
TOTAL AREA: 2086

All graphic depictions, including dimensions and area, are approximate and subject to change without notice. Oral representations cannot be relied upon as correctly stating representation of the developer. For correct representations, make reference to the documents required by FLORIDA STATUTES SECTION 718.503 to be furnished by the developer to the buyer or lessee.