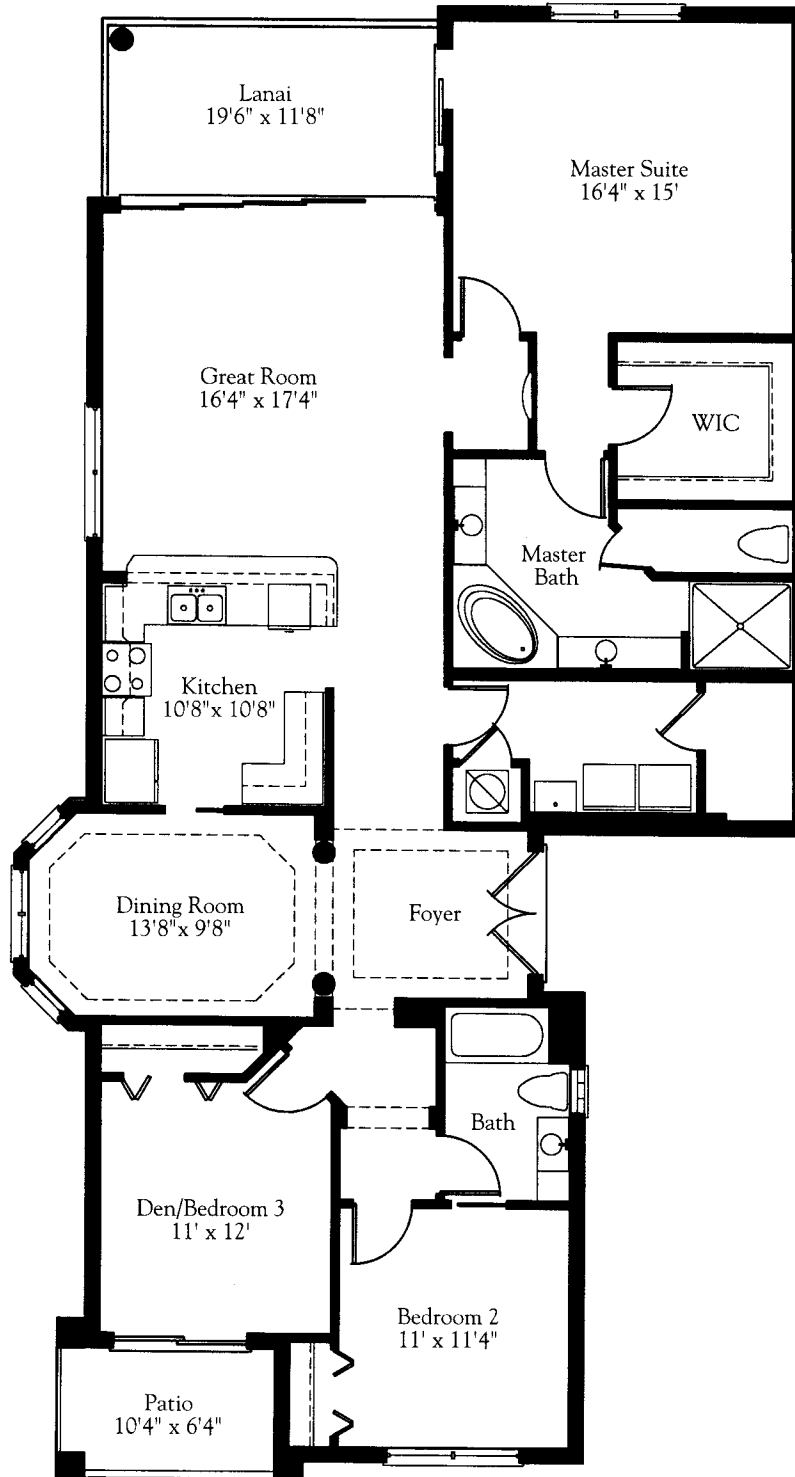


BUILDING 5 RESIDENCE 11



	3 BEDROOM ♦ 2 BATH
LIVING AREA	1,869 SQ.FT.
LANAI	184 SQ.FT.
LANAI	65 SQ.FT.
TOTAL	2,118 SQ.FT.

All dimensions are approximate. The developer reserves the right to change and alter all materials, specifications, features, dimensions, and designs without notice. See building plans for special conditions on window locations, elevators, stairs, and walkways.