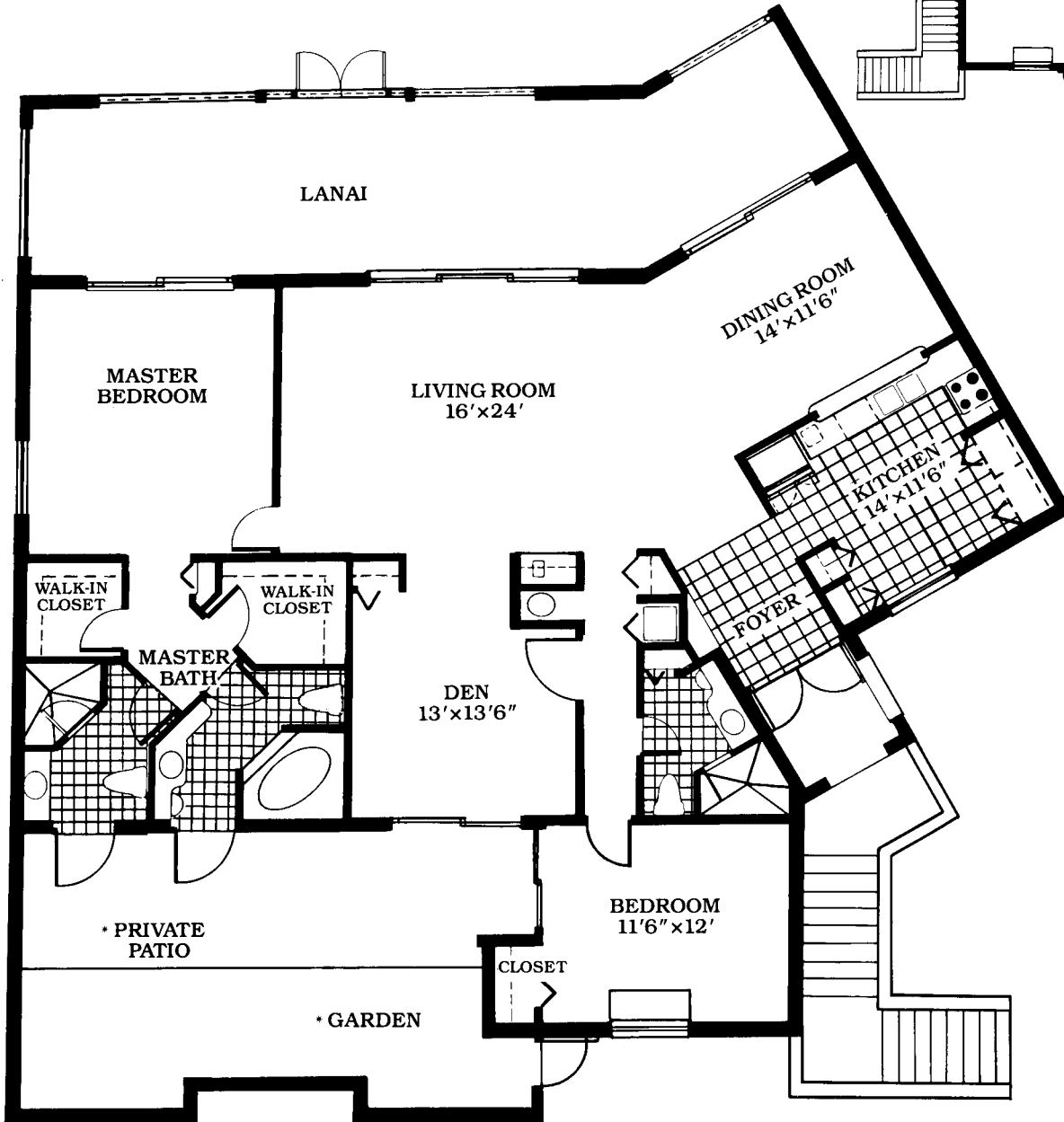
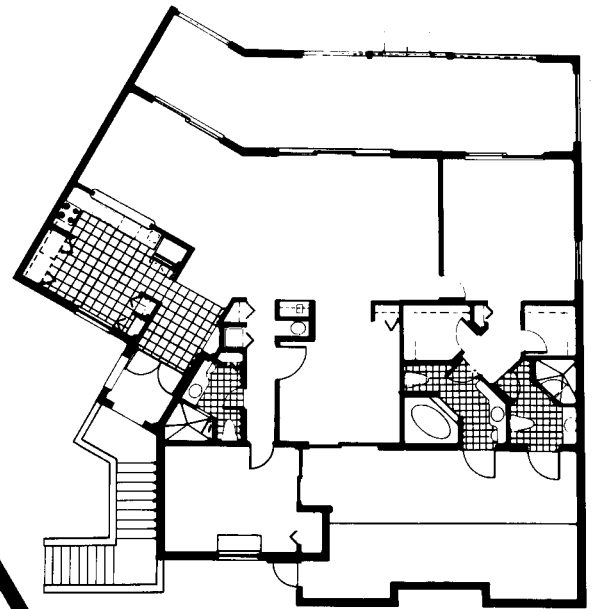


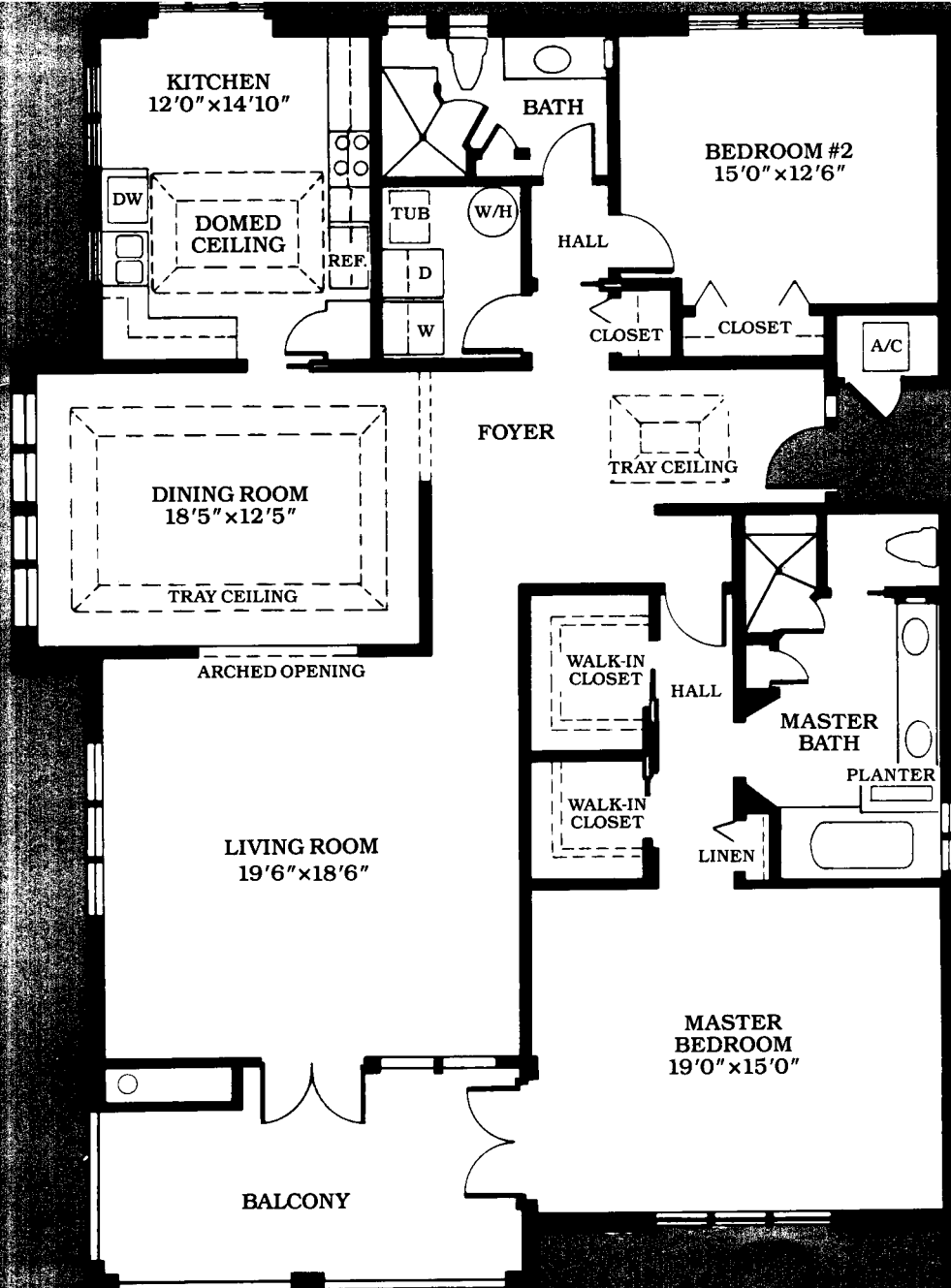
# 3 Bedroom, 3 Bath, Deluxe

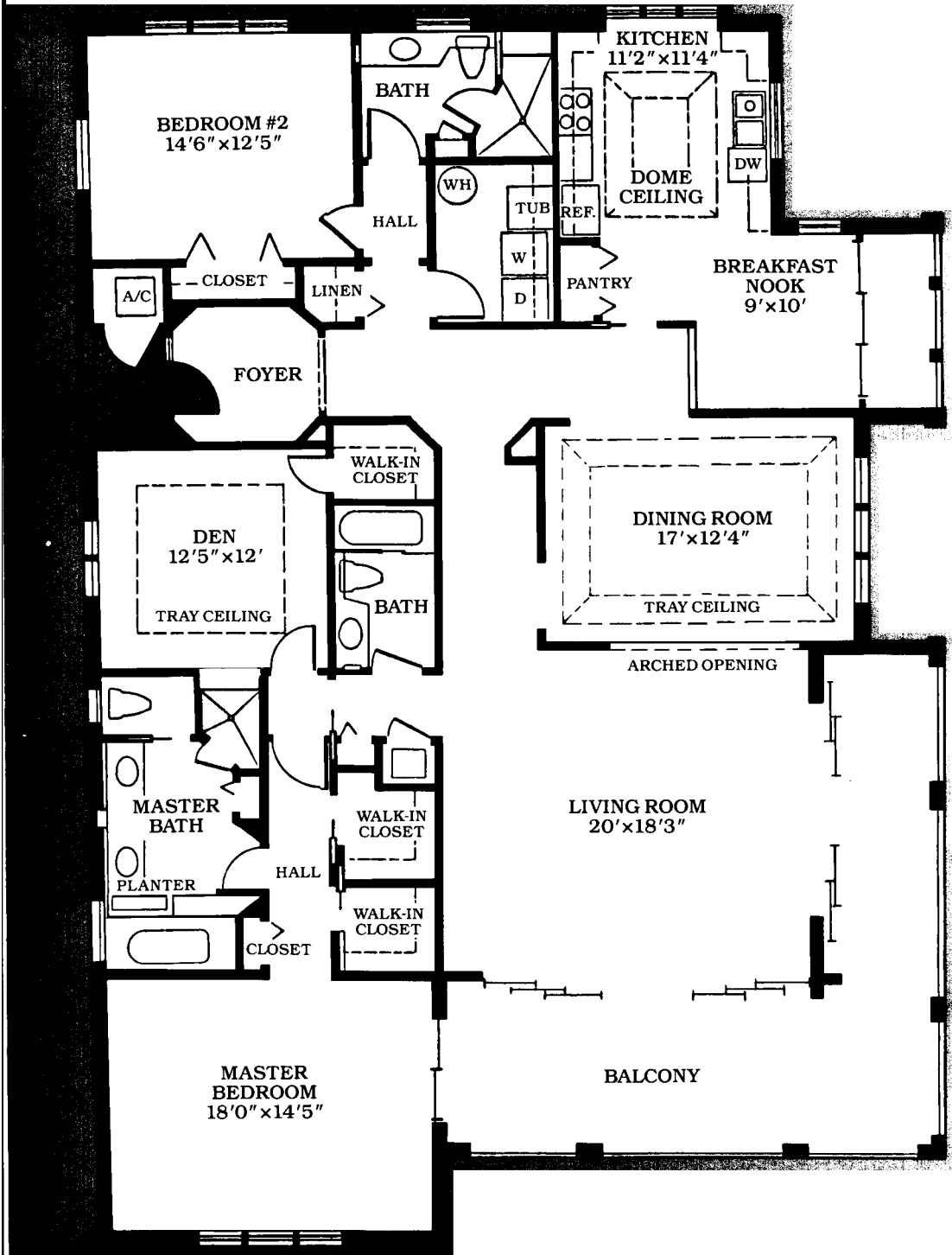
Air Conditioned Area:	Lower Unit: 1,899 Sq. Ft.	Upper Unit: 1,899 Sq. Ft.
Screened Patio/Balcony:	476 Sq. Ft.	476 Sq. Ft.
Private Garden & Patio:	448 Sq. Ft.	—
<b>Total:</b>	<b>2,823 Sq. Ft.</b>	<b>2,375 Sq. Ft.</b>



These large end units offer more than just an extra bedroom. Den areas open to living rooms for larger scale entertaining. Screened patio/balcony areas open to the side for an additional view of Morningstar's lush surroundings. Upper units are accented by vaulted ceilings, and lower units by a private garden and patio.

\* Lower Units only.





BEDROOM #2  
14'6" x 12'5"

KITCHEN  
11'2" x 11'4"

BATH

DOME  
CEILING

A/C

CLOSET

LINEN

HALL

WH

TUB

REF

DW

W

D

PANTRY

BREAKFAST  
NOOK  
9' x 10'

FOYER

WALK-IN  
CLOSET

DEN  
12'5" x 12'

TRAY CEILING

BATH

DINING ROOM  
17' x 12'4"

TRAY CEILING

ARCHED OPENING

MASTER  
BATH

PLANTER

HALL

WALK-IN  
CLOSET

LIVING ROOM  
20' x 18'3"

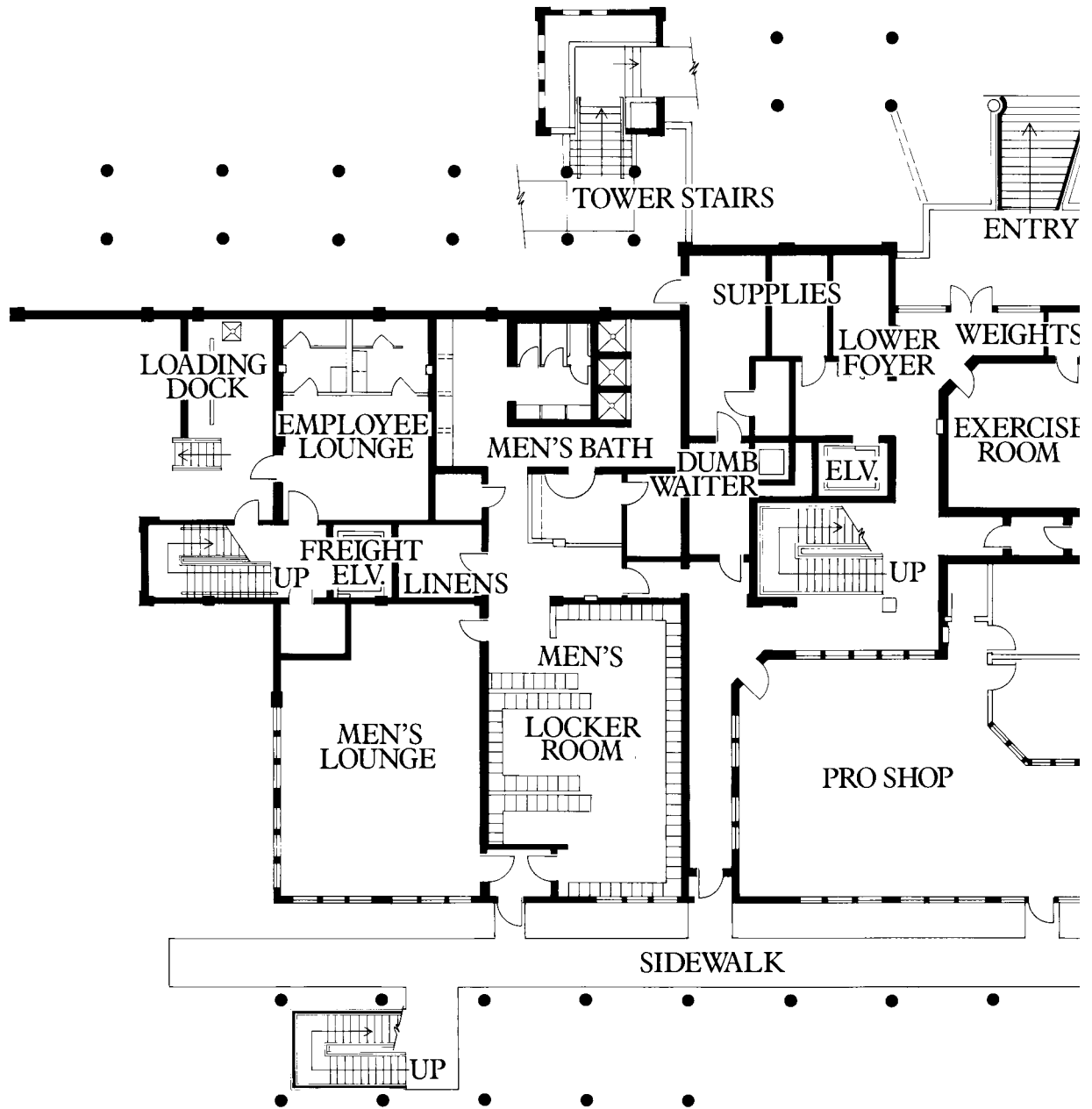
WALK-IN  
CLOSET

CLOSET

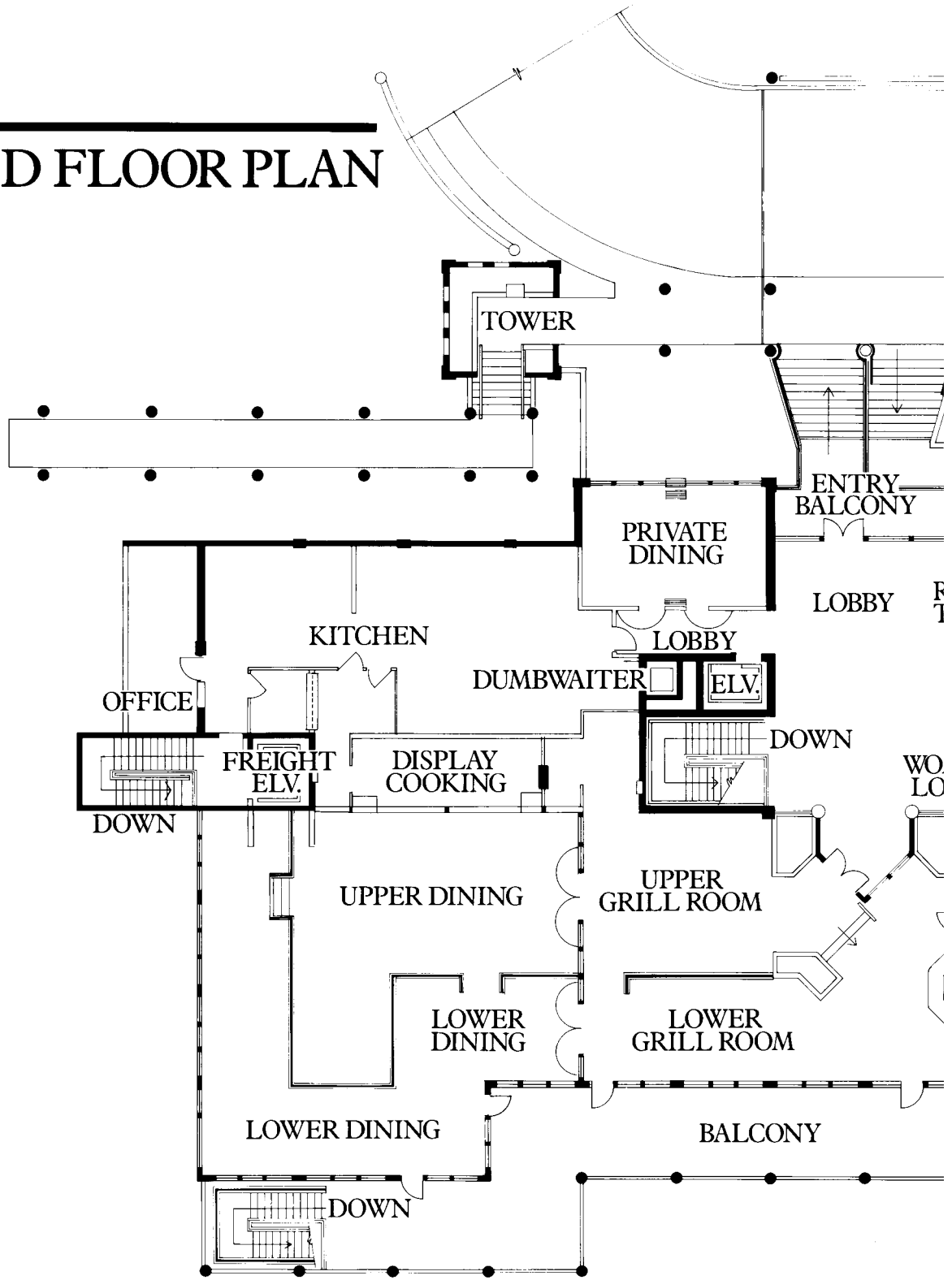
MASTER  
BEDROOM  
18'0" x 14'5"

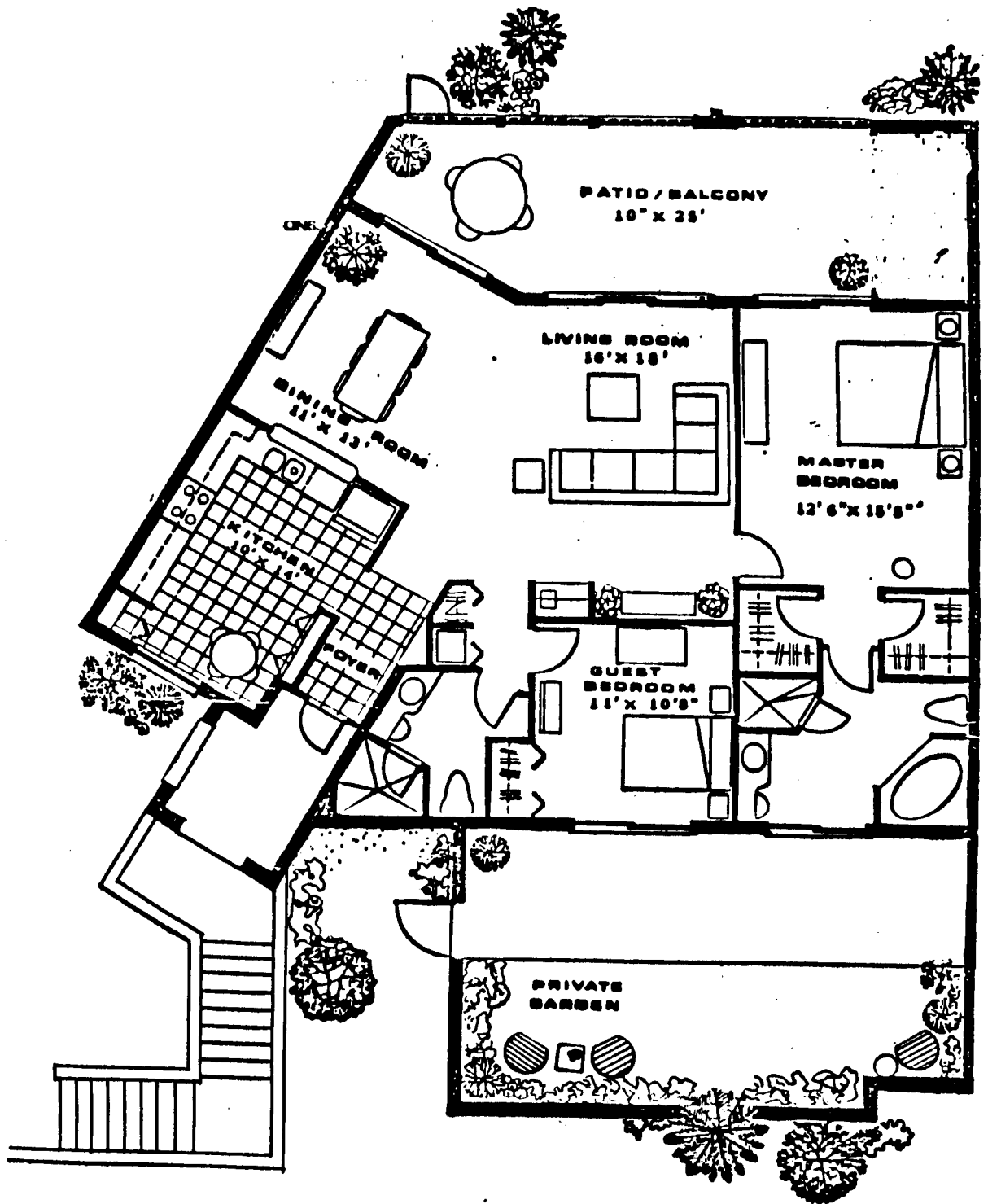
BALCONY

# FIRST FLOOR PLAN



# SECOND FLOOR PLAN



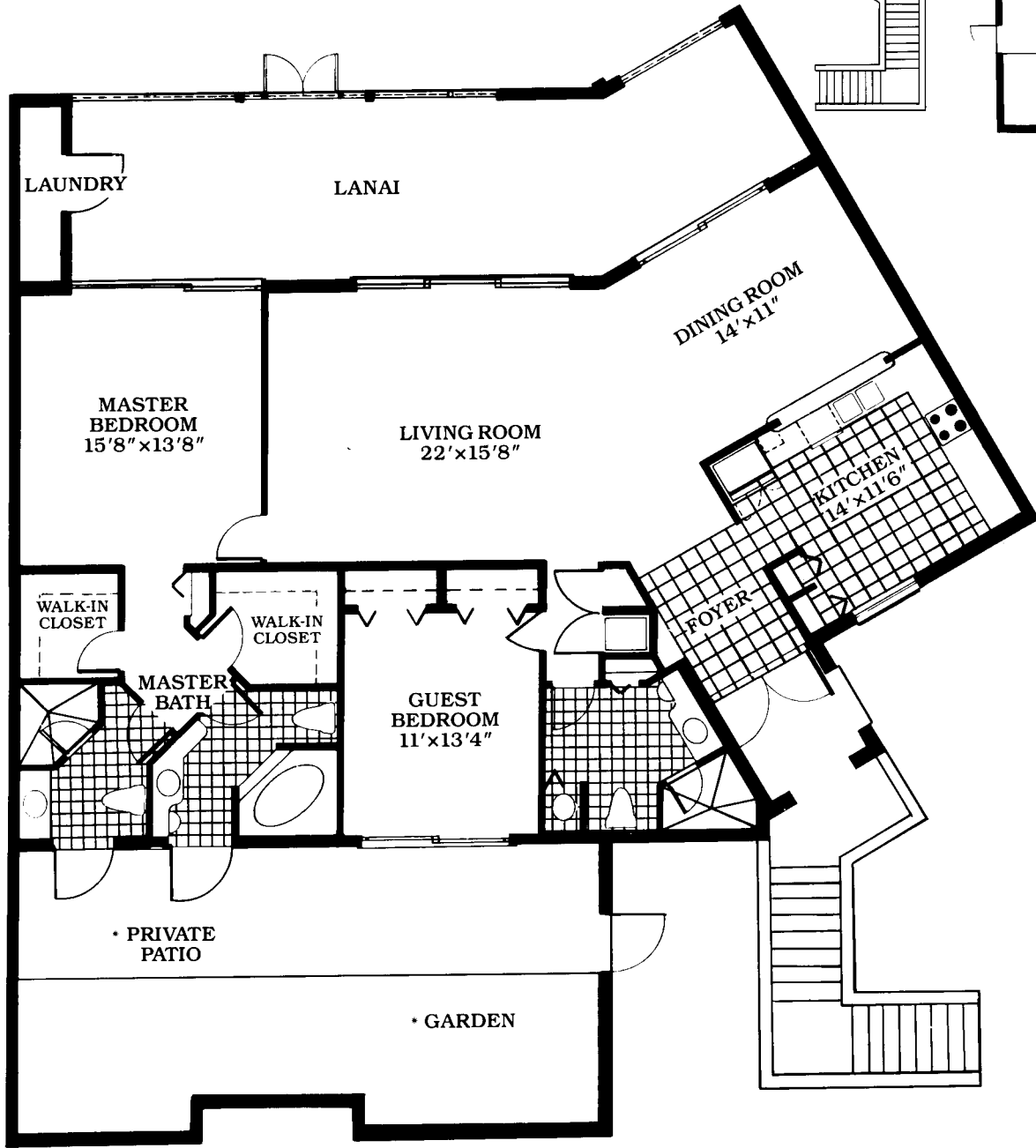
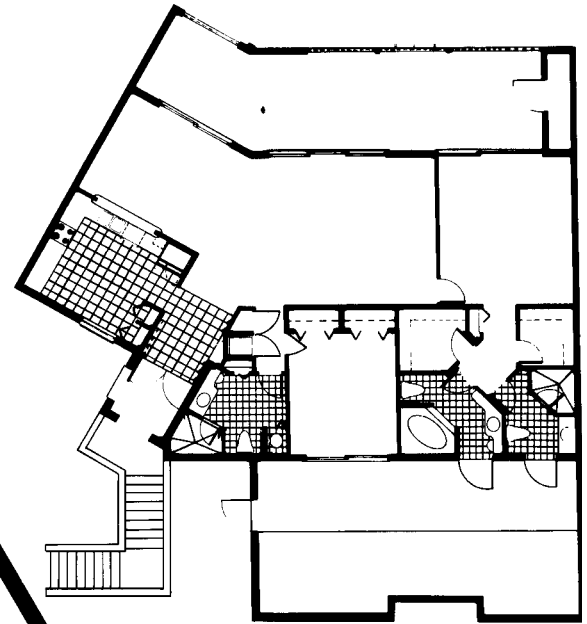


## 2 Bedroom Standard Unit

CONDITIONED AREA	1224 SF.
LAUNDRY	57
LANAI	256
ENTRY TOWER	54
TOTAL	1793 SF.

# 2 Bedroom, 3 Bath, Deluxe

Air Conditioned Area:	Lower Unit: 1,655 Sq. Ft.	Upper Unit: 1,655 Sq. Ft.
Screened Patio/Balcony:	395 Sq. Ft.	395 Sq. Ft.
Private Garden & Patio	528 Sq. Ft.	—
<b>Total:</b>	<b>2,578 Sq. Ft.</b>	<b>2,050 Sq. Ft.</b>



\* Lower Units only.