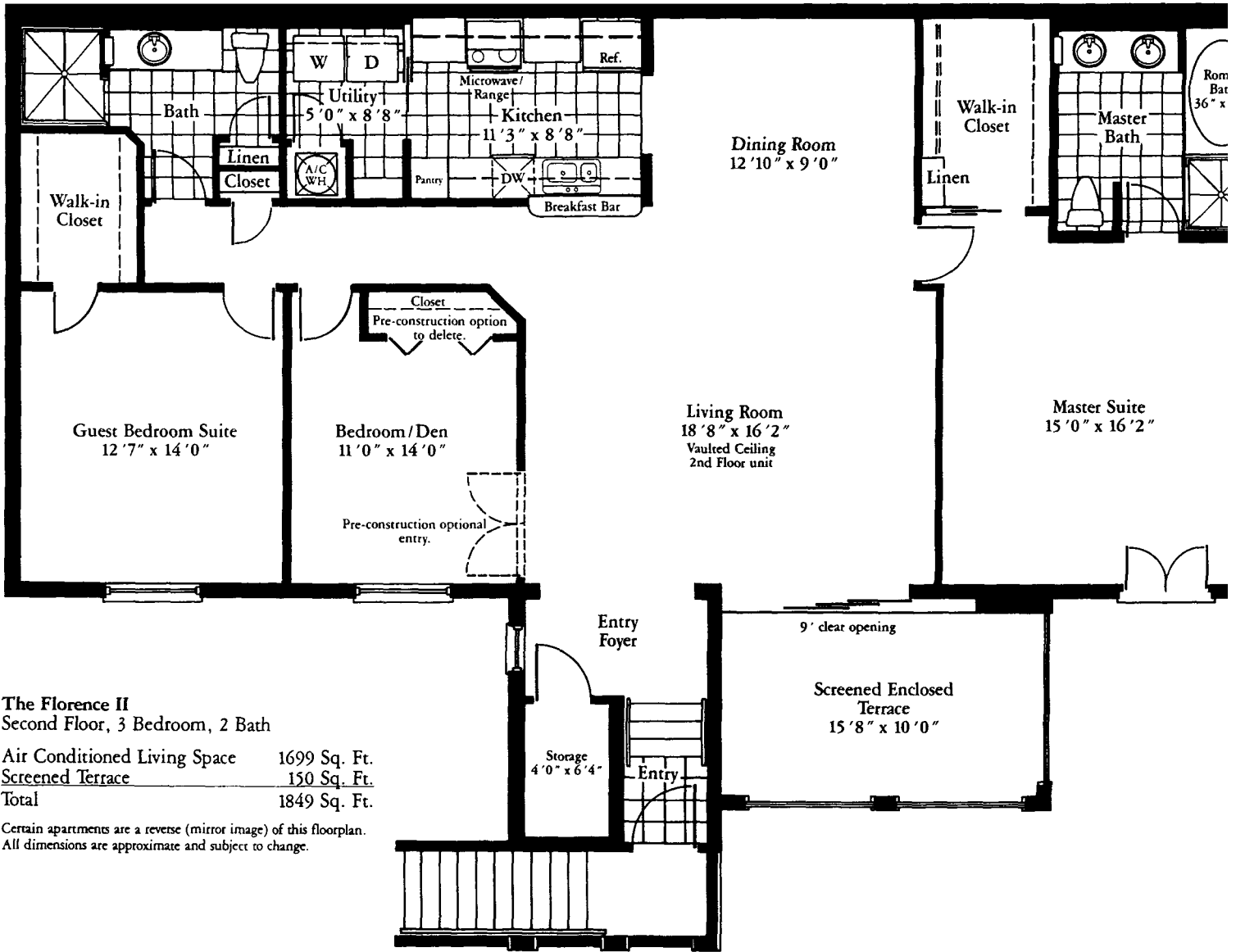


**The Verona II**  
 Second Floor, 2 Bedroom, 2 Bath

Air Conditioned Living Space	1473 Sq. Ft.
Screened Terrace	150 Sq. Ft.
<b>Total</b>	<b>1623 Sq. Ft.</b>

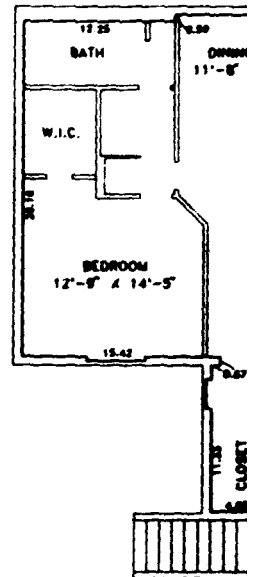
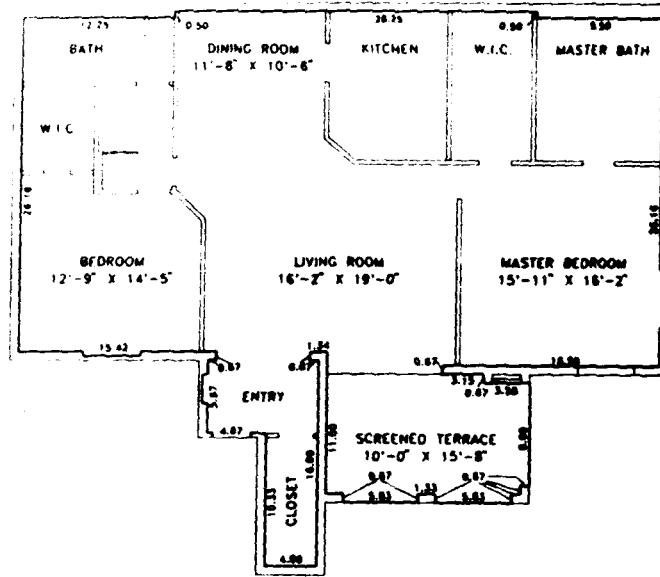
Certain apartments are a reverse (mirror image) of this floorplan.  
 All dimensions are approximate and subject to change.



**The Florence II**  
**Second Floor, 3 Bedroom, 2 Bath**

Air Conditioned Living Space	1699 Sq. Ft.
Screened Terrace	150 Sq. Ft.
<b>Total</b>	<b>1849 Sq. Ft.</b>

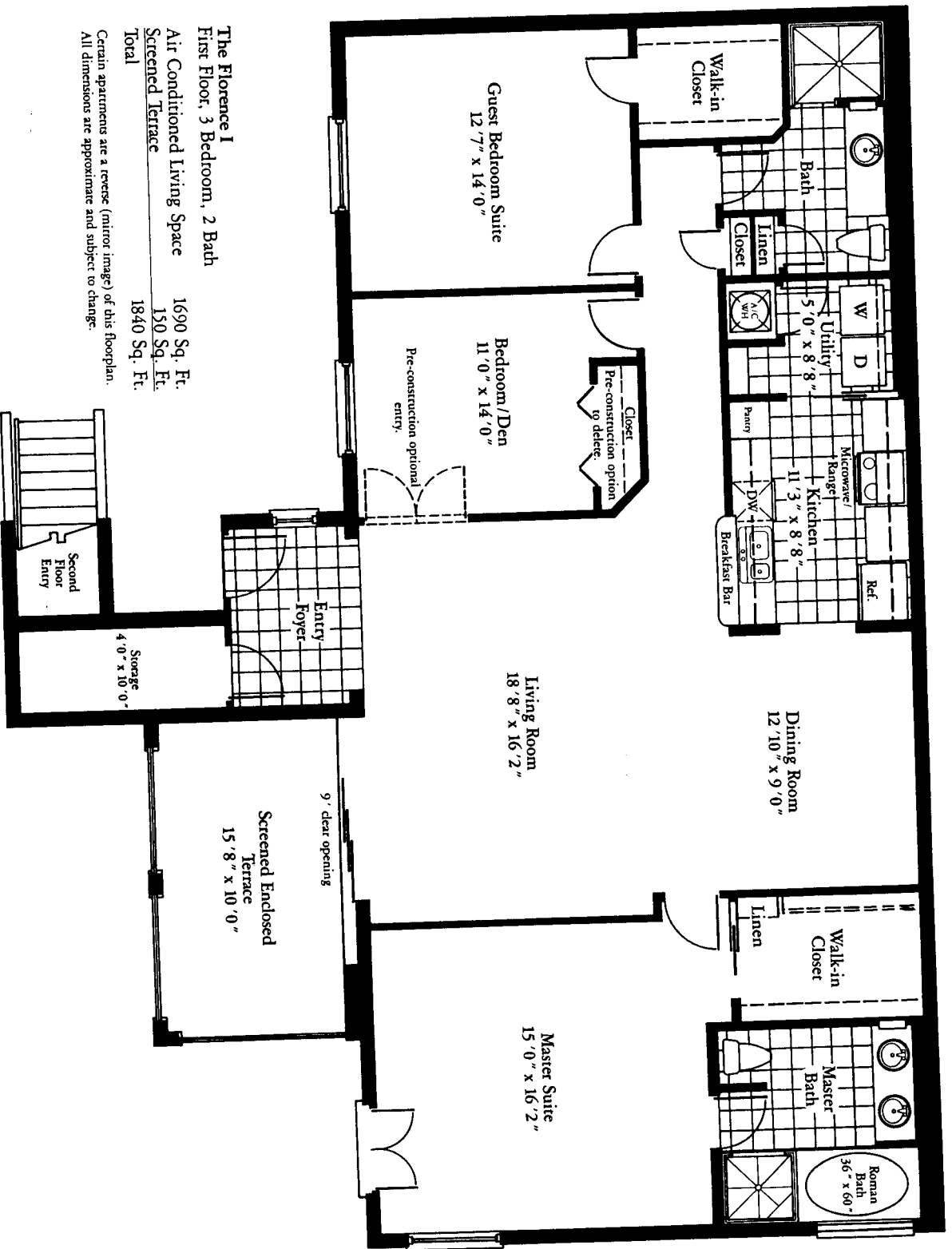
Certain apartments are a reverse (mirror image) of this floorplan.  
 All dimensions are approximate and subject to change.



SCALE IN FEET

TYPICAL 'A' UNIT - DOWNSTAIRS

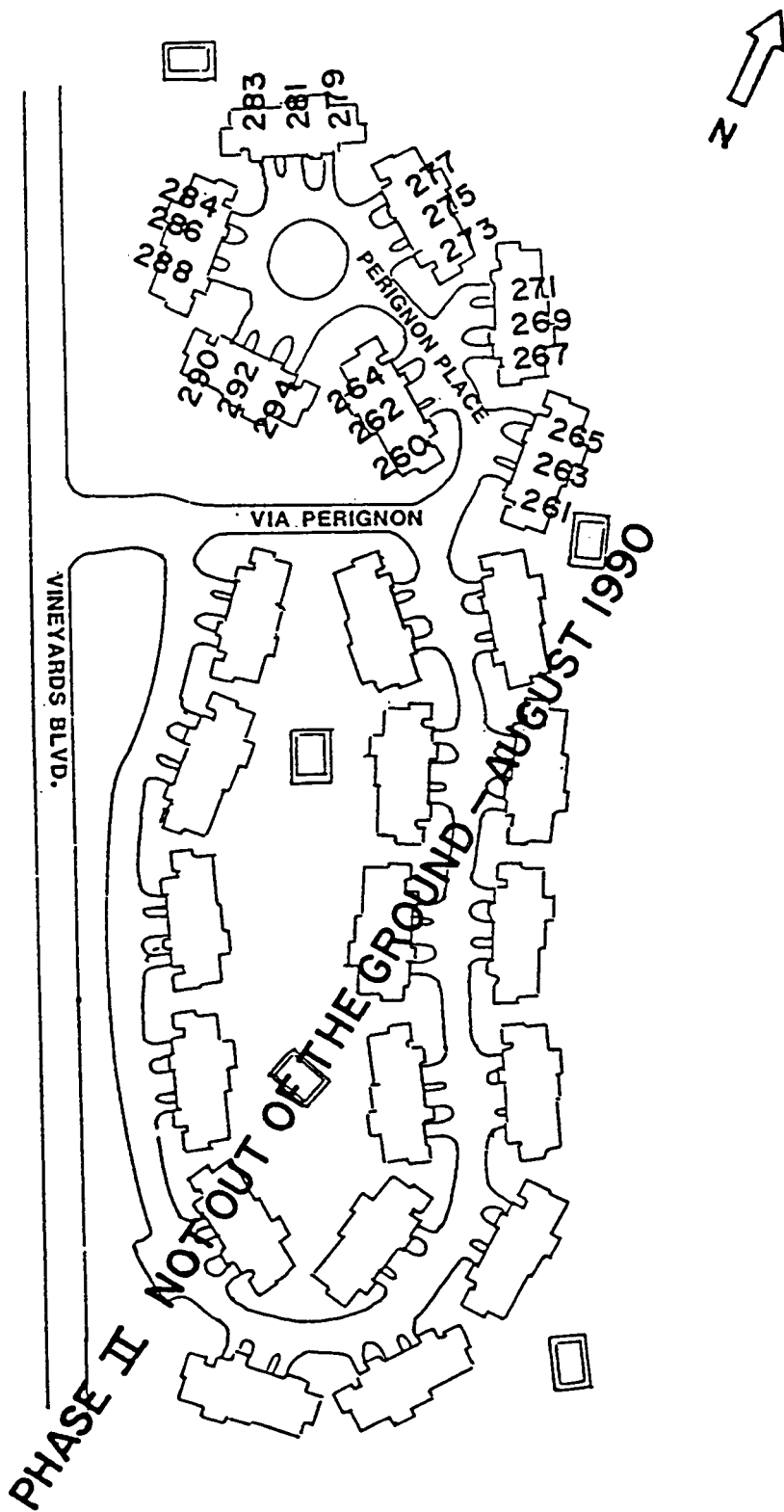
TYP



**The Florence I**  
 First Floor, 3 Bedroom, 2 Bath  
 Air Conditioned Living Space 1690 Sq. Ft.  
 Screened Terrace 150 Sq. Ft.  
 Total 1840 Sq. Ft.

Certain apartments are a reverse (mirror image) of this floorplan.  
 All dimensions are approximate and subject to change.

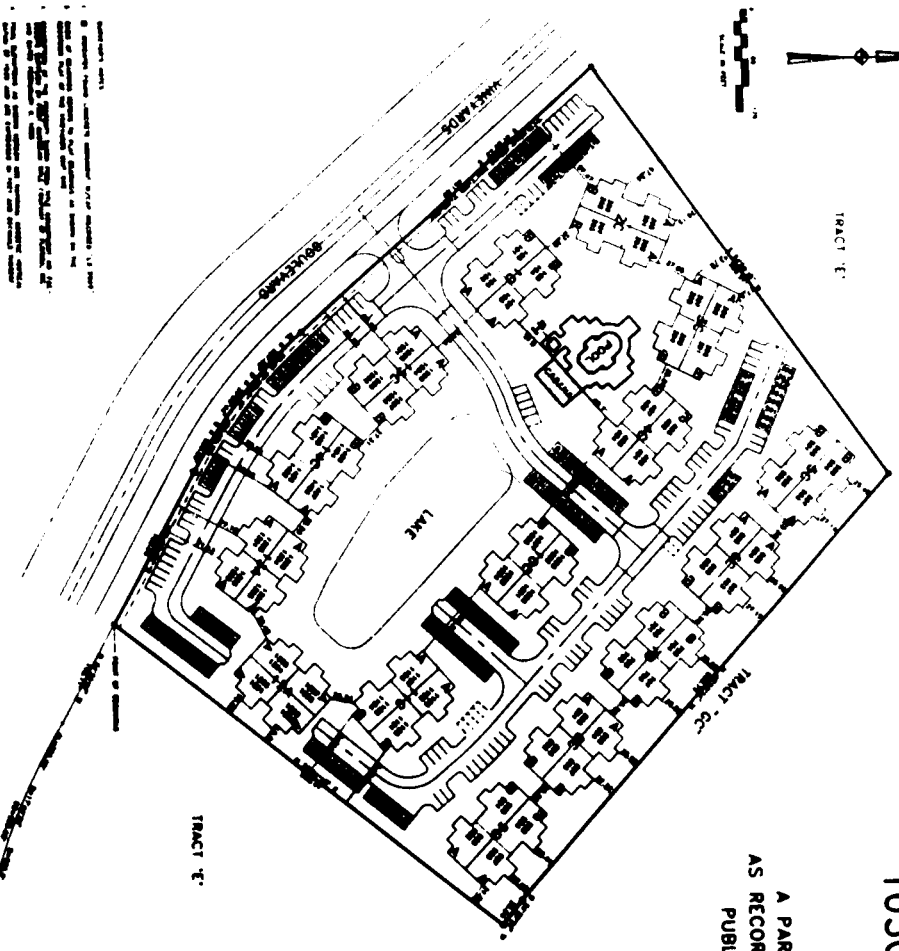
# TRA-VIGNE AT THE VINEYARDS ZONE 17





SURVEY AND PLOT PLAN

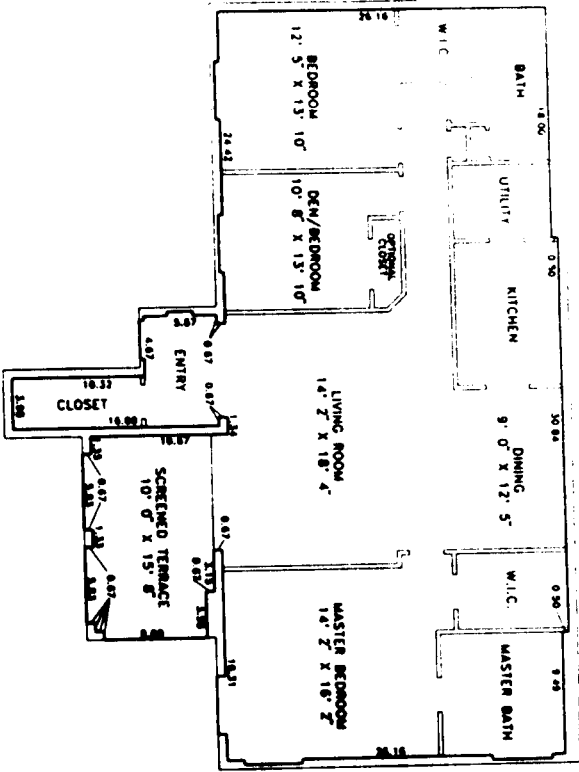
THIS SURVEY AND PLOT PLAN WAS PREPARED BY THE SURVEYOR IN ACCORDANCE WITH THE REQUIREMENTS OF THE FLORIDA CONDOMINIUM ACT, CHAPTER 718, F.S., AND THE RULES THEREUNDER. THE SURVEYOR HAS CONDUCTED A VISUAL INSPECTION OF THE PROPERTY AND HAS FOUND THAT THE INFORMATION FURNISHED TO HIM IS TRUE AND CORRECT. THE SURVEYOR HAS NOT CONDUCTED A PHYSICAL SURVEY OF THE PROPERTY.



TUSCANY AT THE VINEYARDS  
A CONDOMINIUM  
A PART OF TRACT "E", THE VINEYARDS UNIT ONE,  
AS RECORDED IN PLAT BOOK 14, PAGES 67 THROUGH 74  
PUBLIC RECORDS OF COLLIER COUNTY, FLORIDA

CONDOMINIUM BOOK \_\_\_\_\_ PAGE \_\_\_\_\_

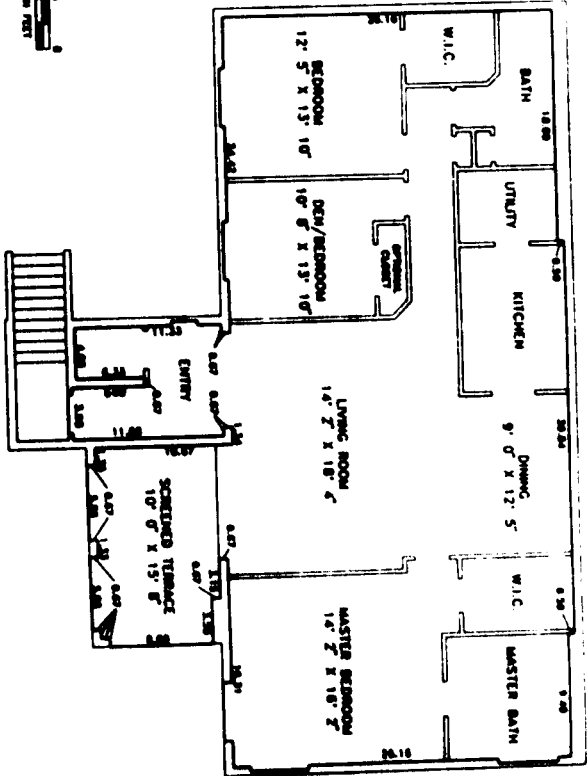
DATE	02/07/14
DRAWN BY	[Signature]
CHECKED BY	[Signature]
APPROVED BY	[Signature]
TITLE	TUSCANY AT THE VINEYARDS A CONDOMINIUM



TYPICAL "B" UNIT DOWNSTAIRS



- APARTMENT UNITS
- 1) UNIT PLANS PREPARED FROM ARCHITECTURAL DRAWINGS BY ALVARO SOUTHWEST ARCHITECTS AND ENGINEERS, INC. AND ARE TO BE USED FOR INFORMATION ONLY.
  - 2) ALL DIMENSIONS ARE TO FACE UNLESS OTHERWISE NOTED.
  - 3) ALL FINISHES ARE TO BE DETERMINED BY THE ARCHITECT.
  - 4) ALL DIMENSIONS ARE TO FACE UNLESS OTHERWISE NOTED.
  - 5) ALL DIMENSIONS ARE TO FACE UNLESS OTHERWISE NOTED.
  - 6) ALL DIMENSIONS ARE TO FACE UNLESS OTHERWISE NOTED.
  - 7) ALL DIMENSIONS ARE TO FACE UNLESS OTHERWISE NOTED.
  - 8) ALL DIMENSIONS ARE TO FACE UNLESS OTHERWISE NOTED.
  - 9) ALL DIMENSIONS ARE TO FACE UNLESS OTHERWISE NOTED.
  - 10) ALL DIMENSIONS ARE TO FACE UNLESS OTHERWISE NOTED.



TYPICAL "B" UNIT UPSTAIRS

PROJECT - ...  
ARCHITECT AT THE UNIVERSITY  
A CONDENSED