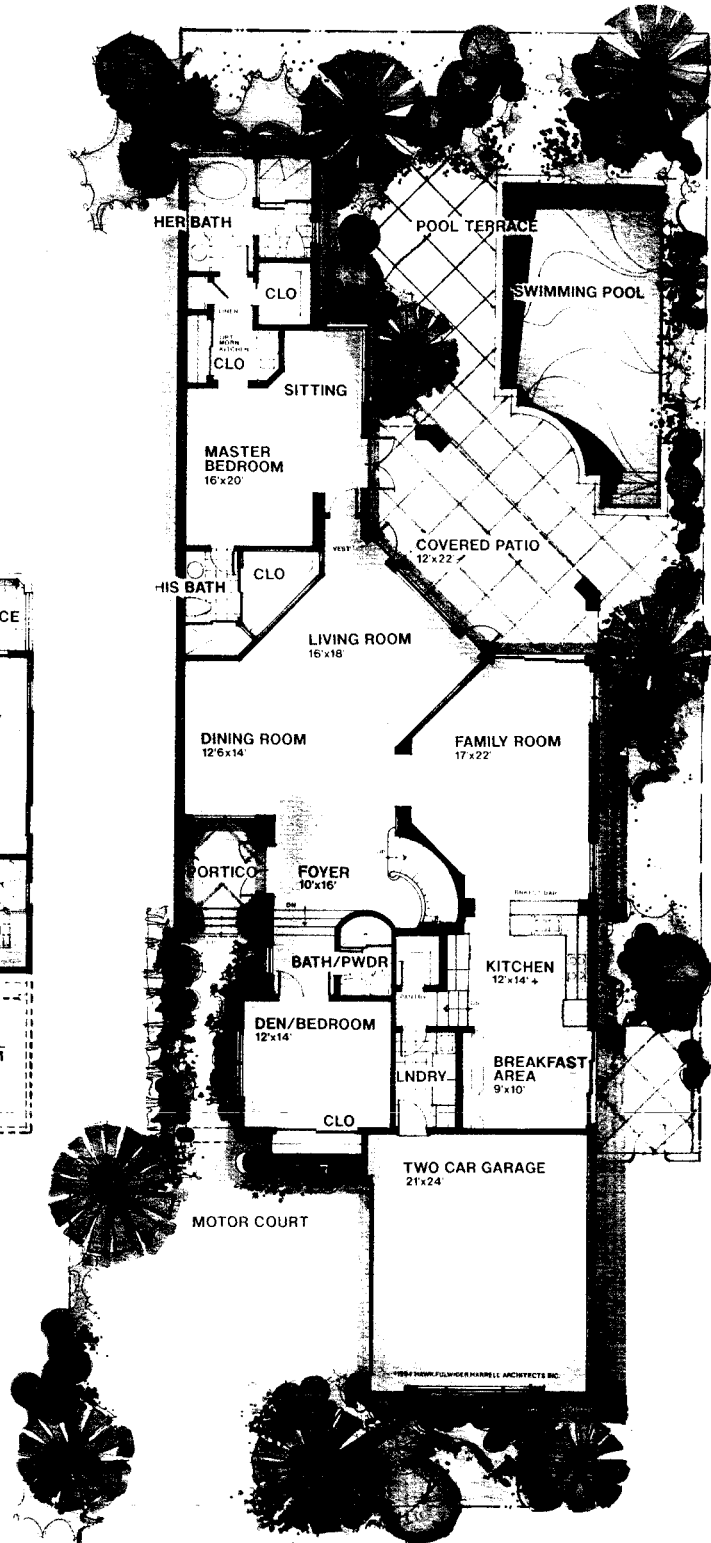
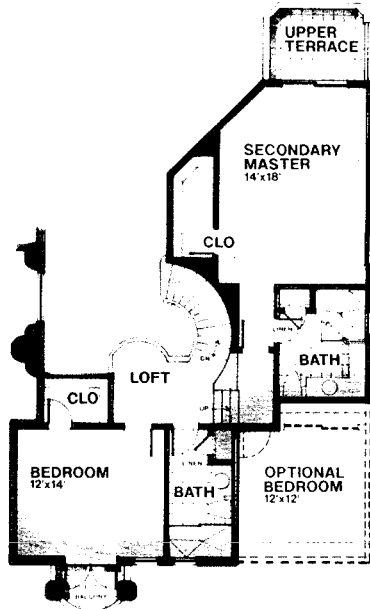


Second Floor Plan

Additional Living Area
 with Optional Bedroom 180 Square Feet

Total Living Area
 with Optional Bedroom 3,523 Square Feet



The Verona

Air-Conditioned Living Area 3,343 Square Feet

Garage 528 Square Feet

Covered Patio & Loggia 386 Square Feet

Total Area Under Roof 4,257 Square Feet

These drawings are conceptual only and the developer reserves the right to make modifications, revisions, and changes which it deems desirable. Dimensions and square footage are approximate and may vary with actual construction.

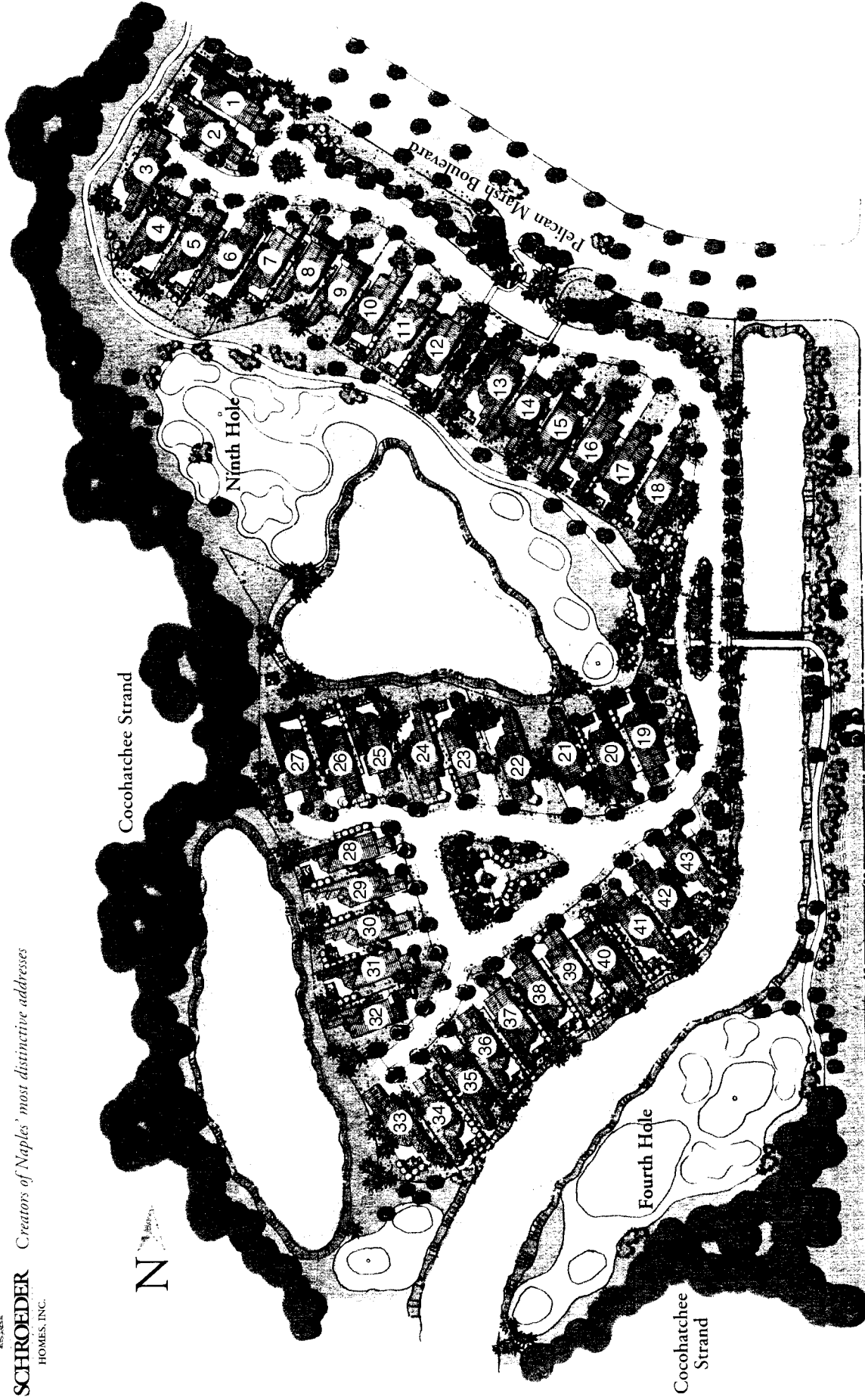
PORTOFINO

AT PELICAN MARSH



SCHROEDER *Creators of Naples' most distinctive addresses*

HOMES, INC.



PORTOFINO

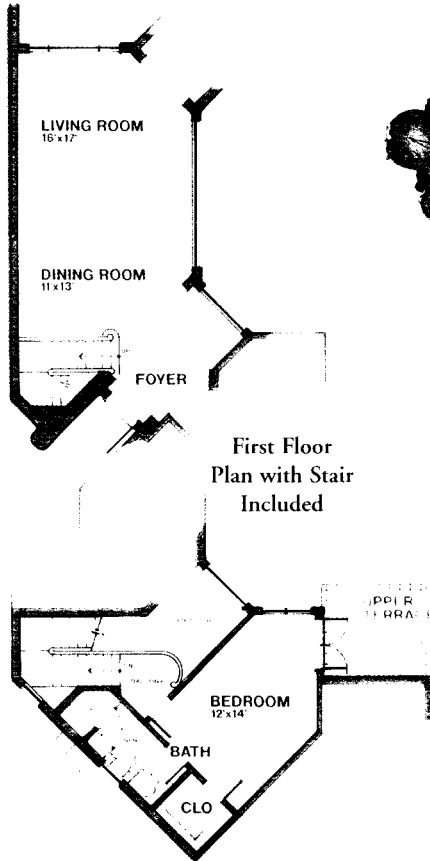
AT PELICAN MARSH

This drawing is conceptual only and the developer reserves the right to make modifications, revisions, and changes which it deems desirable.



SCHROEDER
HOMES, INC.

Creators of Naples' most distinctive addresses



First Floor
Plan with Stair
Included

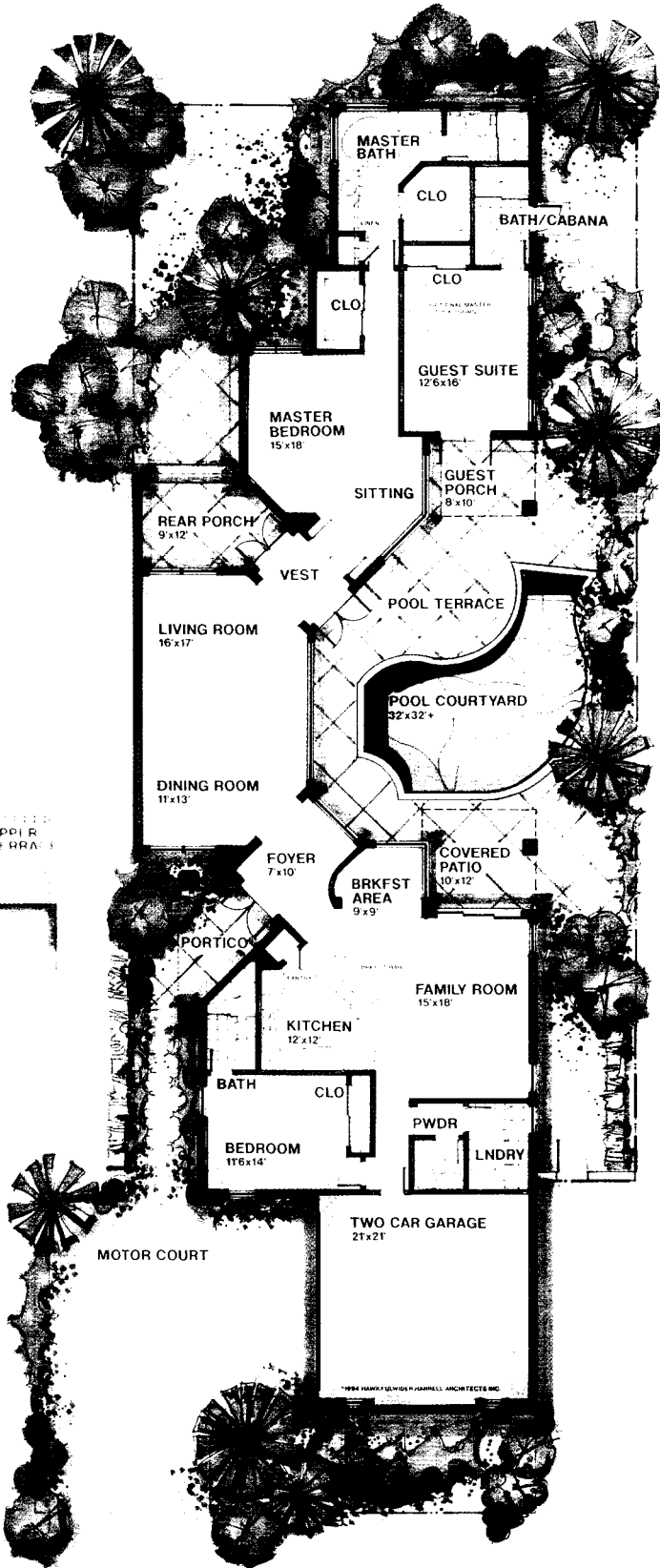
Optional Second Floor Plan

Additional Living Area 422 Square Feet
Total Living Area
with Second Floor 2,972 Square Feet

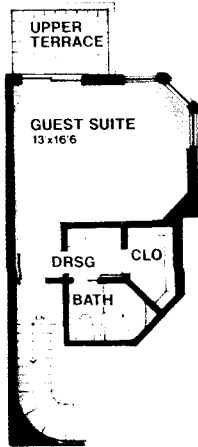
The Milan

Air-Conditioned Living Area 2,550 Square Feet
Garage 489 Square Feet
Covered Patio & Loggia 402 Square Feet
Total Area Under Roof 3,441 Square Feet

These drawings are conceptual only and the developer reserves the right to make modifications, revisions, and changes which it deems desirable. Dimensions and square footage are approximate and may vary with actual construction.



PORTOFINO
AT PELICAN MARSH

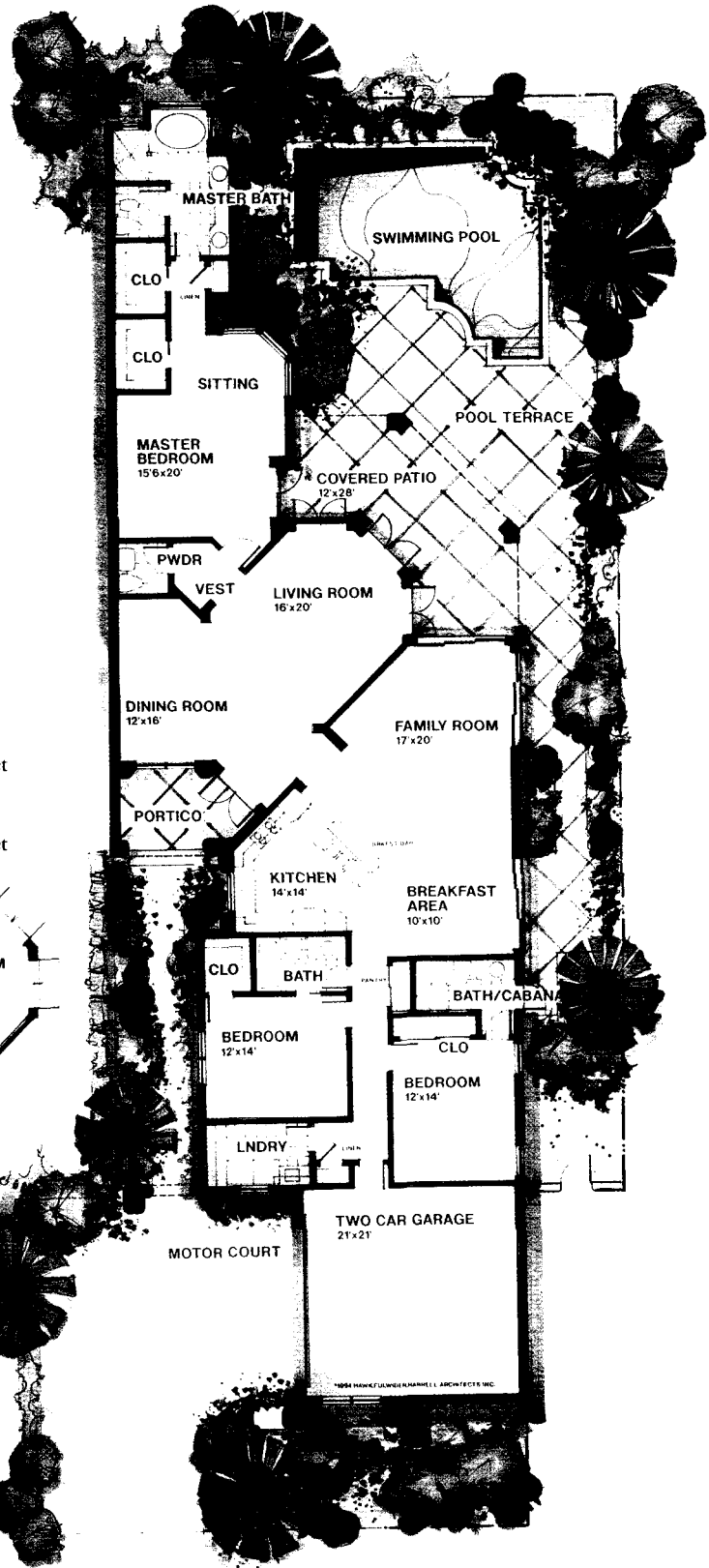
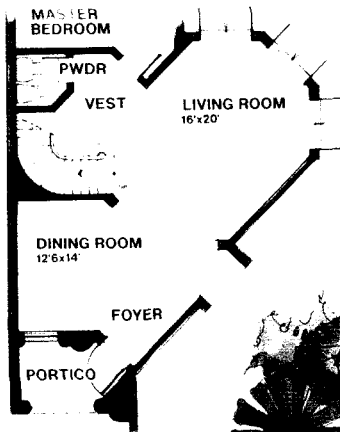


Optional Second Floor Plan

Additional Living Area 472 Square Feet

Total Living Area with Second Floor 3,135 Square Feet

First Floor Plan with Stair Included



The Florence

Air-Conditioned Living Area 2,663 Square Feet

Garage 498 Square Feet

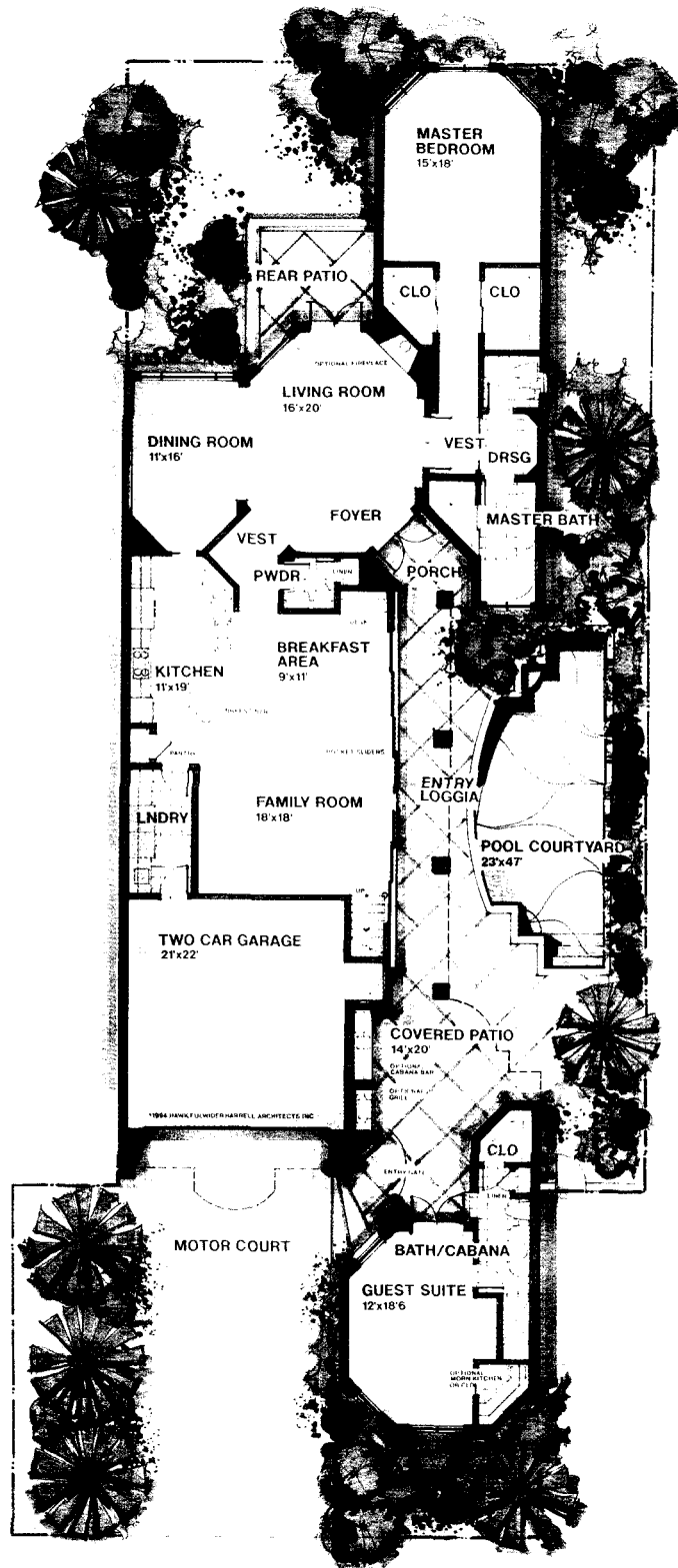
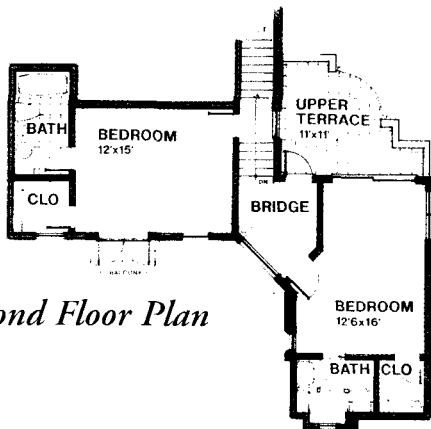
Covered Patio & Loggia 415 Square Feet

Total Area Under Roof 3,576 Square Feet

These drawings are conceptual only and the developer reserves the right to make modifications, revisions, and changes which it deems desirable. Dimensions and square footage are approximate and may vary with actual construction.

PORTOFINO

AT PELICAN MARSH



The Genoa

Air-Conditioned Living Area	3,185 Square Feet
Garage	493 Square Feet
Covered Patio & Loggia	527 Square Feet
Total Area Under Roof	4,205 Square Feet

These drawings are conceptual only and the developer reserves the right to make modifications, revisions, and changes which it deems desirable. Dimensions and square footage are approximate and may vary with actual construction.

PORTOFINO

AT PELICAN MARSH