

NO. 4 S PARK

1/2 SECTION 39, TWP 48S, R6E 25E
DUVAL COUNTY, FLORIDA

SCALE 1" = 200'
JANUARY 1963
SURVEYED BY
BANK & ASSOCIATES INC
FLORIDA

DESCRIPTION: All of the following lands lying in Section 39, Township 48 South, Range 6 East, All of the NE 1/4 lying west of State Road Department R.O.M. (Tammiami Trail) except the north 600 feet, the NE 1/4 of the NW 1/4 and the east 600 feet of the NW 1/4 of the NW 1/4.

KNOW ALL MEN BY THESE PRESENTS, That M.H. Davis Properties Inc. a corporation under the laws of Florida, the owner of the herein described lands, has caused this plat of UNIT NO. 4 NADLES PARK to be made and does hereby dedicate to the perpetual use of the public all streets and avenues and drainage R.O.M. as shown hereon. Whereas, M.H. Davis Properties Inc. has caused this dedication to be signed in its name by its president and its corporate seal to be affixed, attested by its secretary-treasurer, this 16 day of January, A.D. 1963.

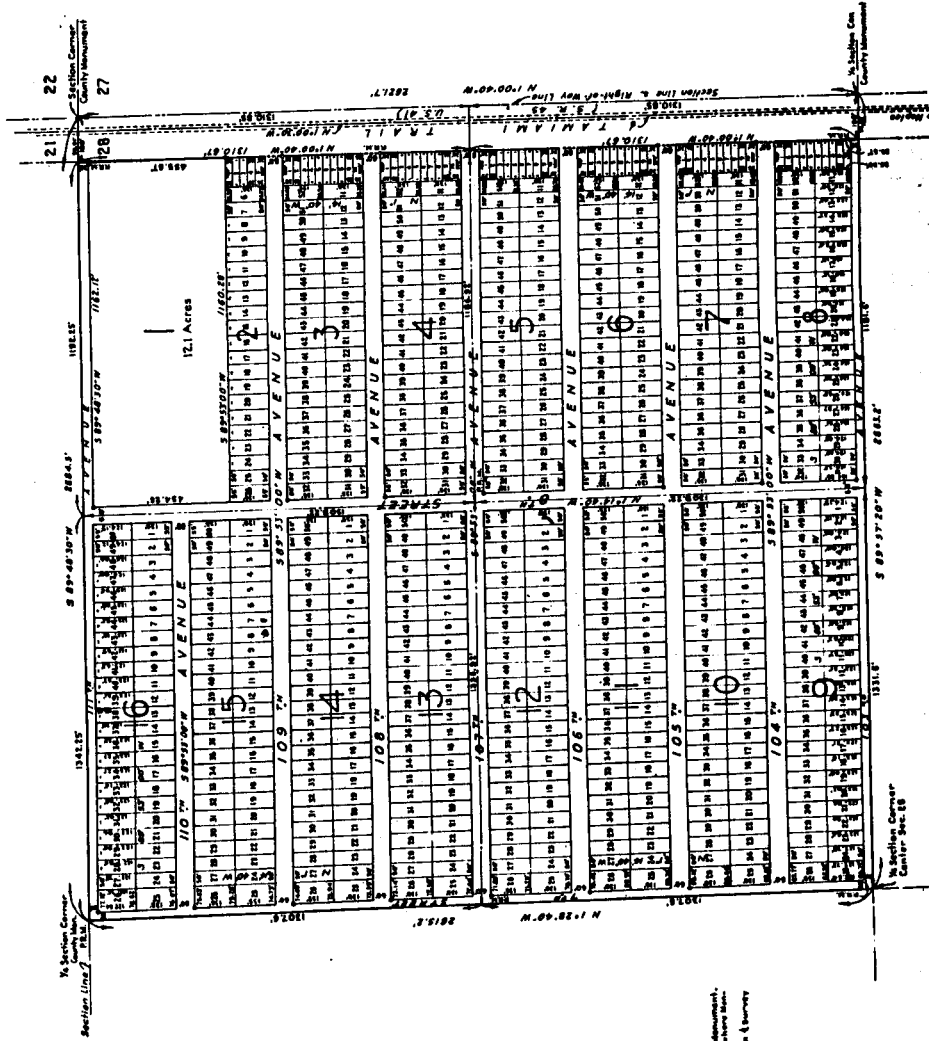
M.H. DAVIS PROPERTIES, INC.
 by *Michael A. Davis* SA, President
 Attest: *Debra Williams*
 Secretary-Treasurer

M. H. DAVIS PROPERTIES INC DEVELOPERS OF

is reserved over and across the new
 ing on Tammiami Trail and those in
 1963, the eastern 75 feet of Lots 44 and 53,
 drainage purposes and public utilities
 all lots in Blocks 46, 47 and 54.
 from & names of which Road No. 48

UNIT NO. 1
NAPLES PARK
 A SUBDIVISION OF
 THE NE 1/4 OF SECTION 28, T48S, R25E
 COLLIER COUNTY, FLORIDA
 Scale: 1"=200' August, 1951

LAWYERS' ABSTRACT SERVICE, INC.
 111 SOUTH MIAMI AVENUE
 NAPLES, FLA.



NOTE
 Estimated for use of public utilities, reserved over and across the rear 5 feet of all lots except those fronting on Tamiami Trail and along the easterly 15 feet of lot 8, block 2 and lot 11 & 12 in block 3 & 8 lots, and over and along the southerly 5 feet of block 1.

NOTES
 1. Includes 64.7 AC. (County's Monument).
 2. The area of all Block Corners whose location is shown on this plat is shown on the Survey of 24th Road No. 45.

Charles H. ...
 Surveyor
 111 South Miami Avenue
 Naples, Florida

DESCRIPTION
 All of the Northeast 1/4 of Section 28, Township 48 South, Range 25 East in Collier County, Florida, EXCEPT the Right-of-Way of State Road No. 45, being a strip of land 150 feet wide off the East side of the described lands.

DEDICATION
 KNOW ALL MEN BY THESE PRESENTS that M.H. Davis Properties, Inc. a corporation under the laws of Florida, the owner of the herein described lands hereinafter described, has caused this plat of NAPLES PARK to be made and duly recorded in the public records of Collier County, Florida, in Book 108, Page 108. IN WITNESS WHEREOF M.H. Davis Properties, Inc. has caused this dedication to be signed in its name by its corporation and its corporate seal to be affixed, attested by its secretary-treasurer this 7th day of August, A.D. 1951.

By: *[Signature]*
 M.H. DAVIS PROPERTIES, INC.
 Secretary-Treasurer

ACKNOWLEDGMENT

STATE OF FLORIDA
 COUNTY OF COLLIER
 I, Clerk of the County, do hereby certify that the foregoing plat of NAPLES PARK, as shown on the attached map, was duly recorded in the public records of this county, in Book 108, Page 108, on the 7th day of August, A.D. 1951, and that the same is a true and correct copy of the original as filed in the office of the Clerk of the County.

Approved: *[Signature]*
 Clerk

APPROVALS

This plat approved this 7th day of August, A.D. 1951 in open meeting of the Board of County Commissioners of Collier County, Florida, in Book 108, Page 108, and the same is hereby approved and recorded in the public records of Collier County, Florida, in Book 108, Page 108.

Approved: *[Signature]*
 Clerk

HEREBY CERTIFY that this plat of NAPLES PARK has been examined by me and found to conform to the laws of Florida, and that the same is a true and correct copy of the original as filed in the office of the Clerk of the County.

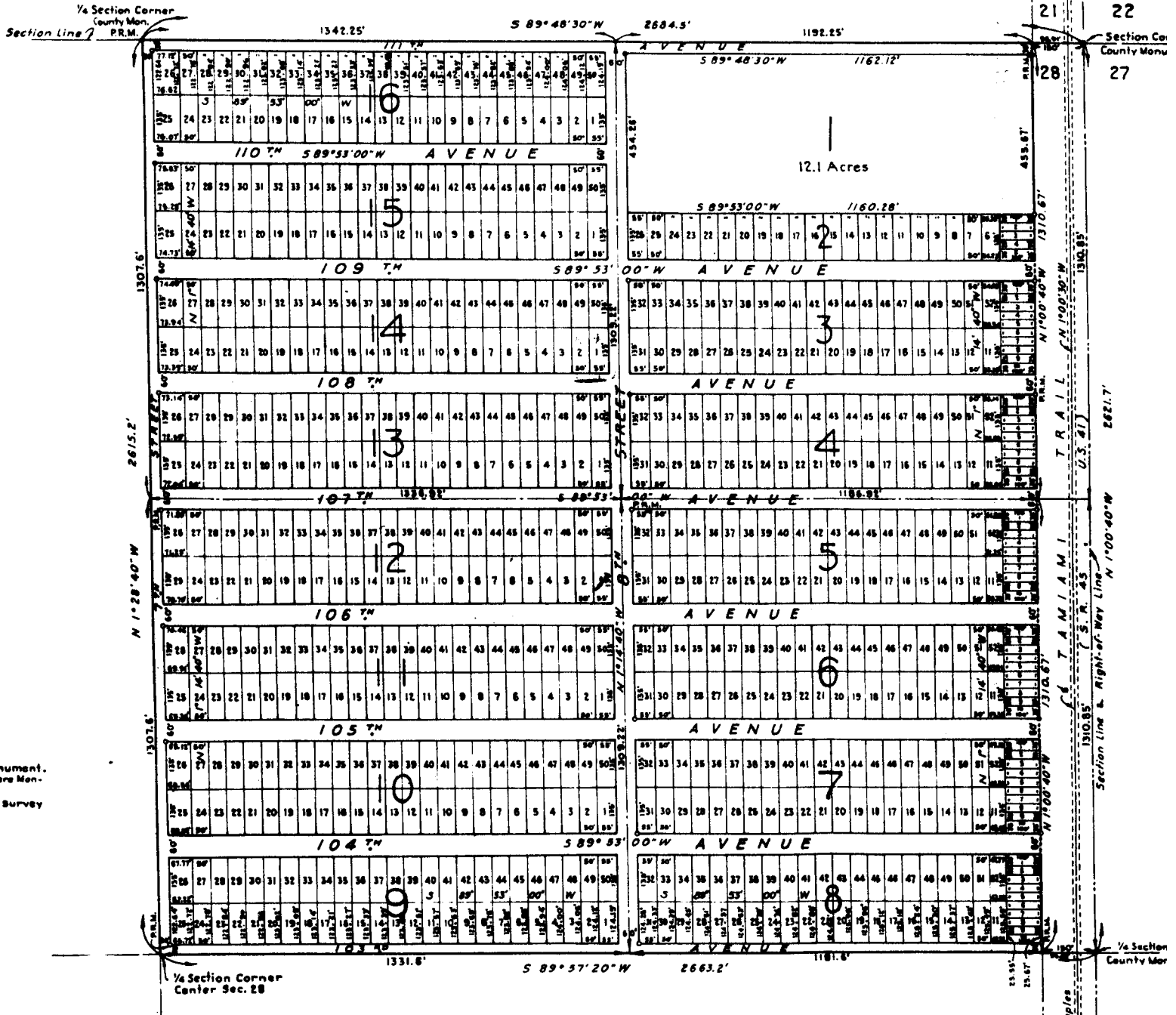
Approved: *[Signature]*
 Clerk

I hereby certify that the plat of NAPLES PARK as shown and approved hereon is a true and correct copy of the original as filed in the office of the Clerk of the County, and that the same is a true and correct copy of the original as filed in the office of the Clerk of the County.

UNIT NO. 1 NAPLES PARK

A SUBDIVISION OF
THE NE 1/4 OF SECTION 28, T48S, R25E
COLLIER COUNTY, FLORIDA

Scale: 1"=200' August, 1951



NOTE

Easement for use of public utilities reserved over and across the rear 5 feet of all lots except those fronting on Tamiami Trail; over and along the easterly 7.5 feet of lot 6, Block 2 and lots 11 & 52 in Blocks 3 to 8 inclusive, and over and along the southerly 5 feet of Block 1.