


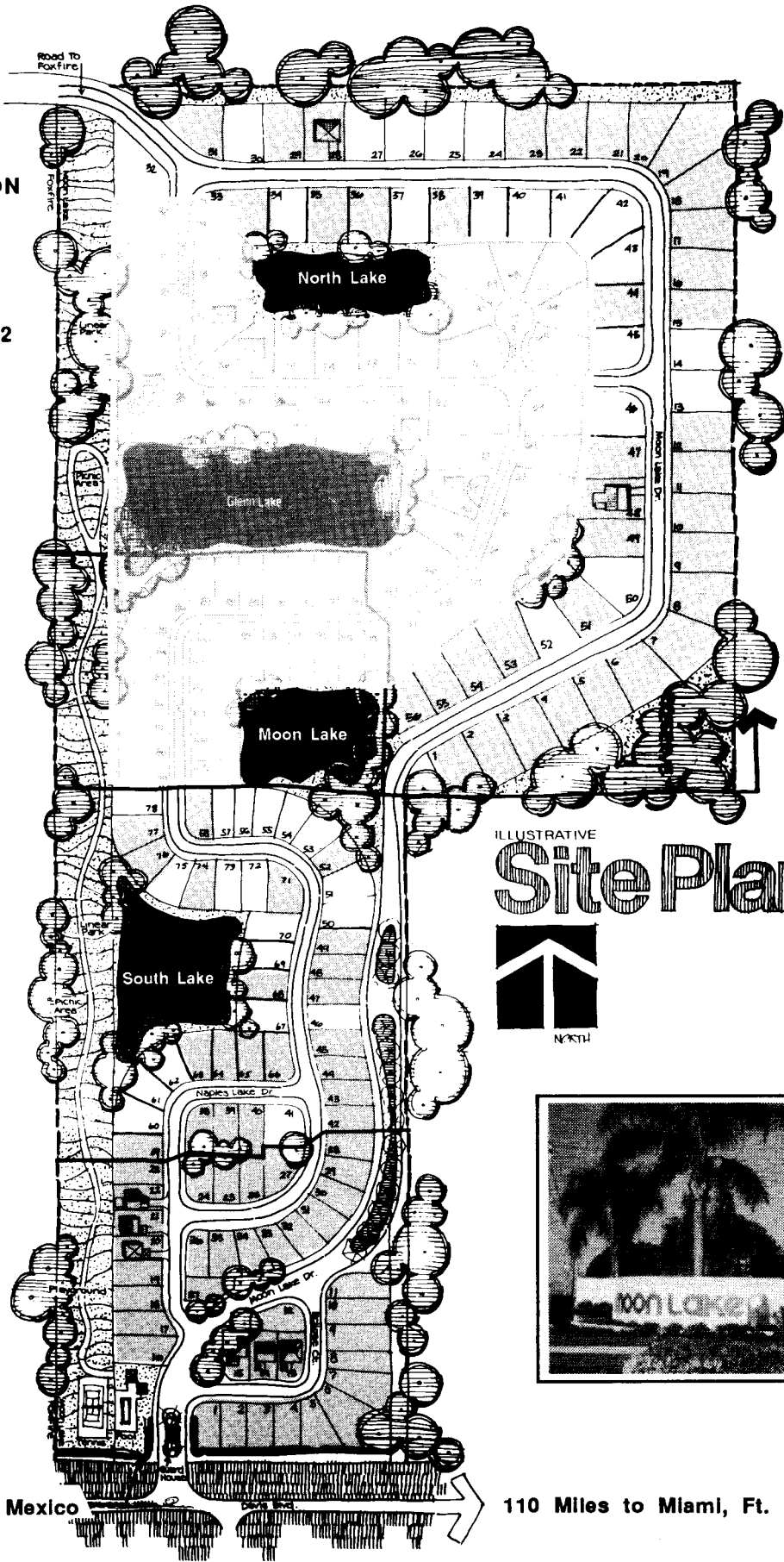


-  FUTURE SUBDIVISION
-  SOLD
-  AVAILABLE FEB. 1, 1992



ILLUSTRATIVE  
**Site Plan**

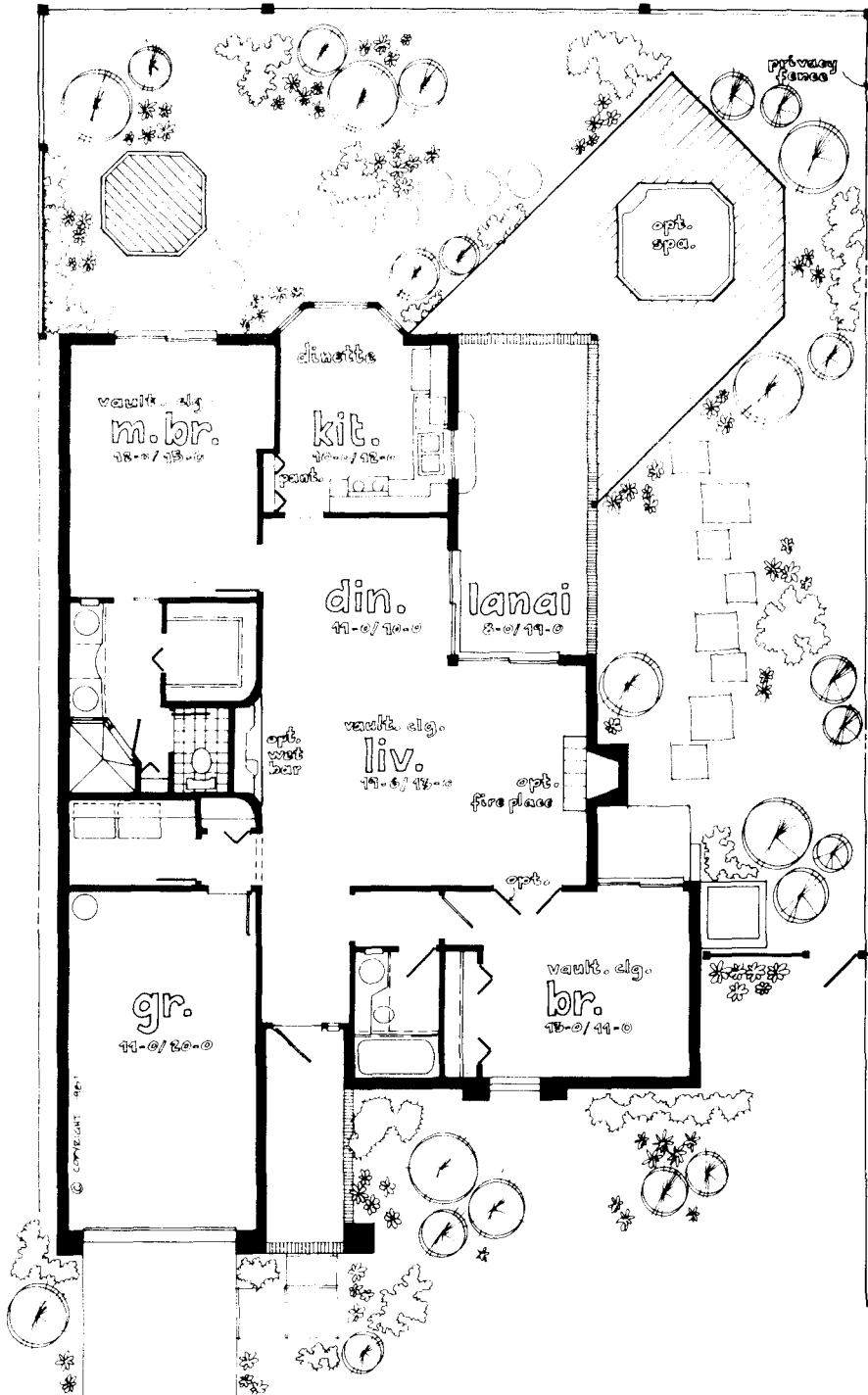


4 Miles to Gulf of Mexico

110 Miles to Miami, Ft. Lauderdale



# GARDEN HOMES AT MOON LAKE



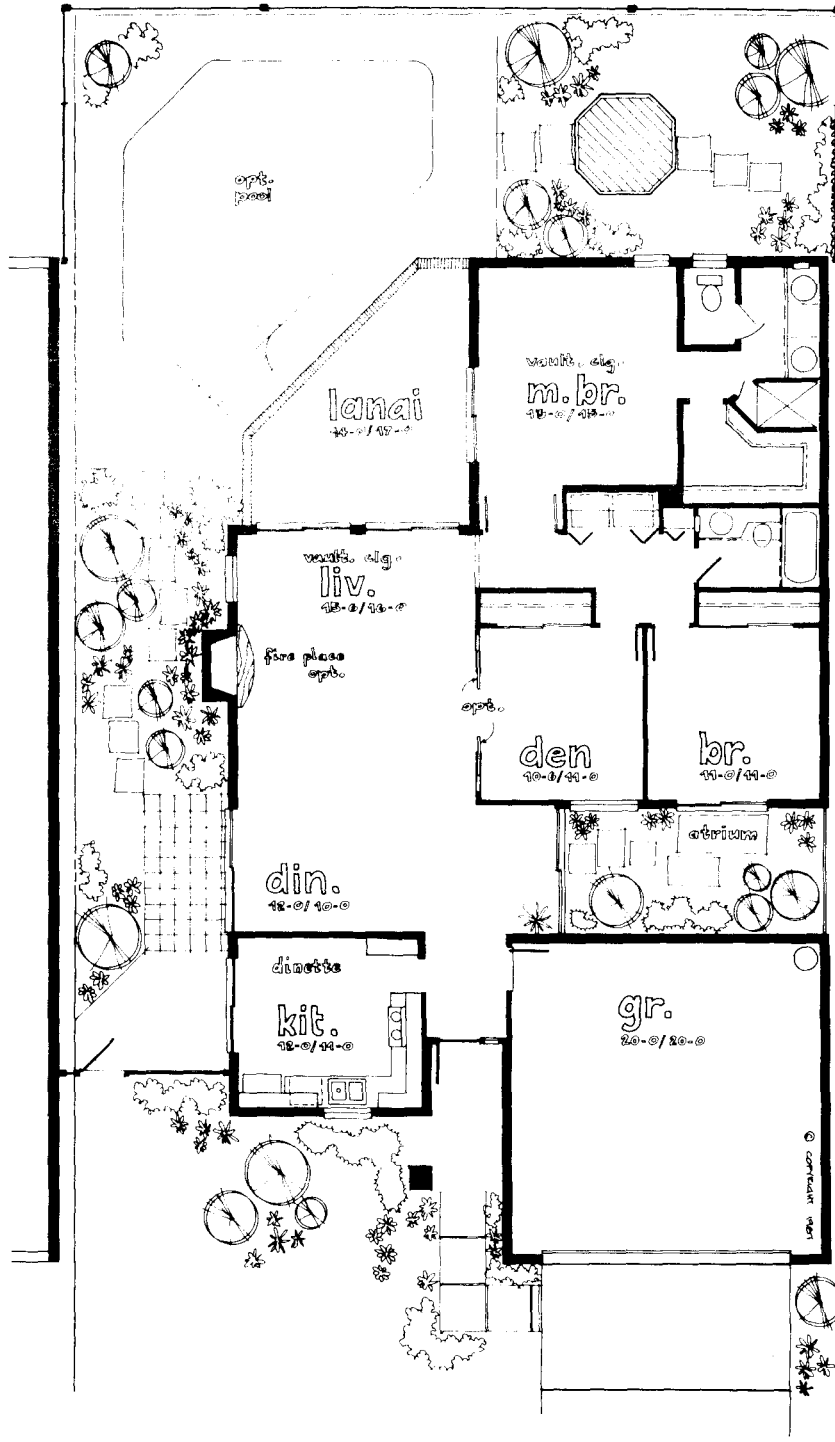
**STYLE A**

## Antigua Mist

- 2-Bedroom
- 1 Car Garage
- Enclosed Yard
- Tile Roof
- No Common Walls
- 1,168 Air Conditioned Square Feet



# GARDEN HOMES AT MOON LAKE



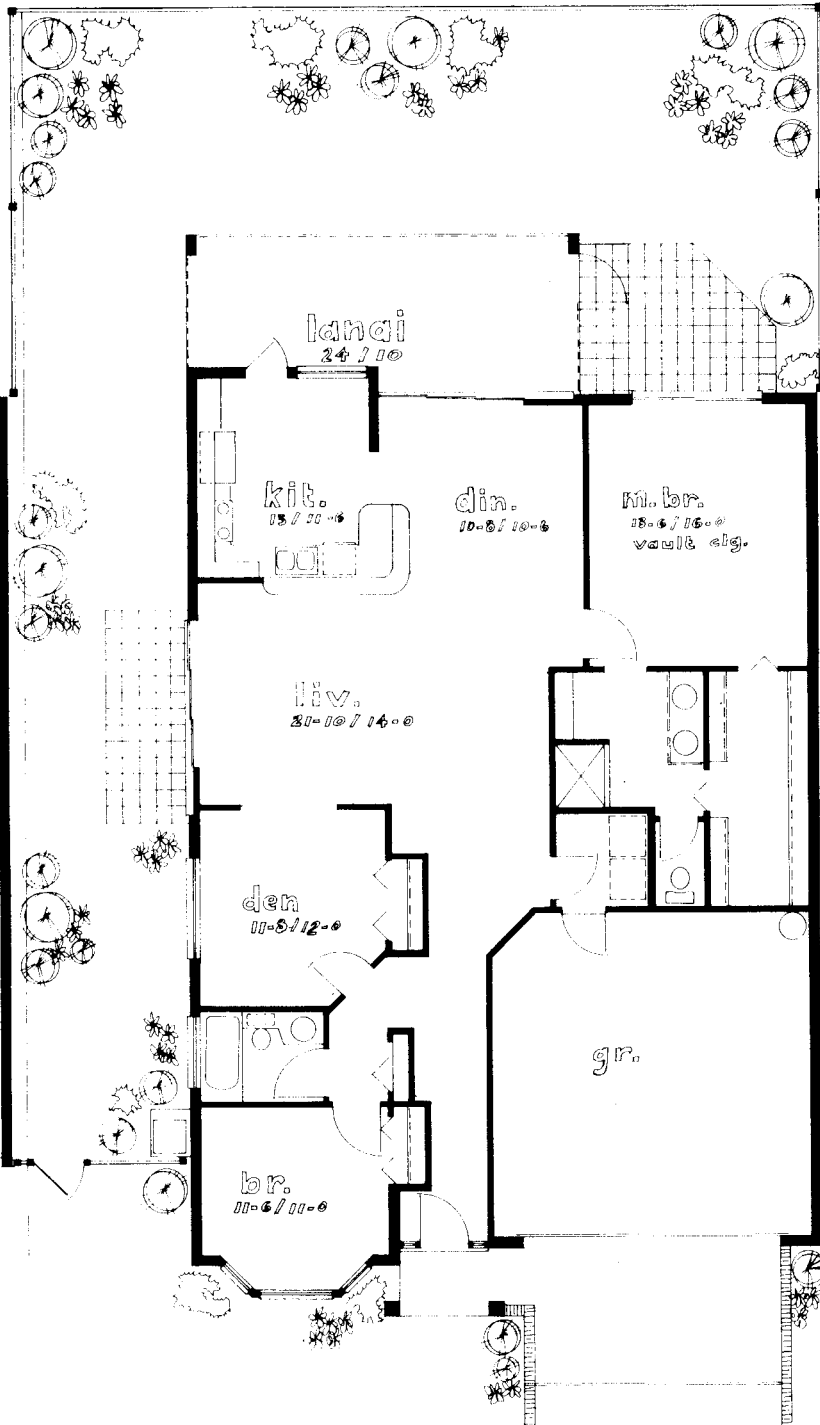
**STYLE C**

## Cincerro Dawn

- 3-Bedroom
- 2 Car Garage
- Enclosed Yard
- Tile Roof
- No Common Walls
- 1,447 Air Conditioned Square Feet

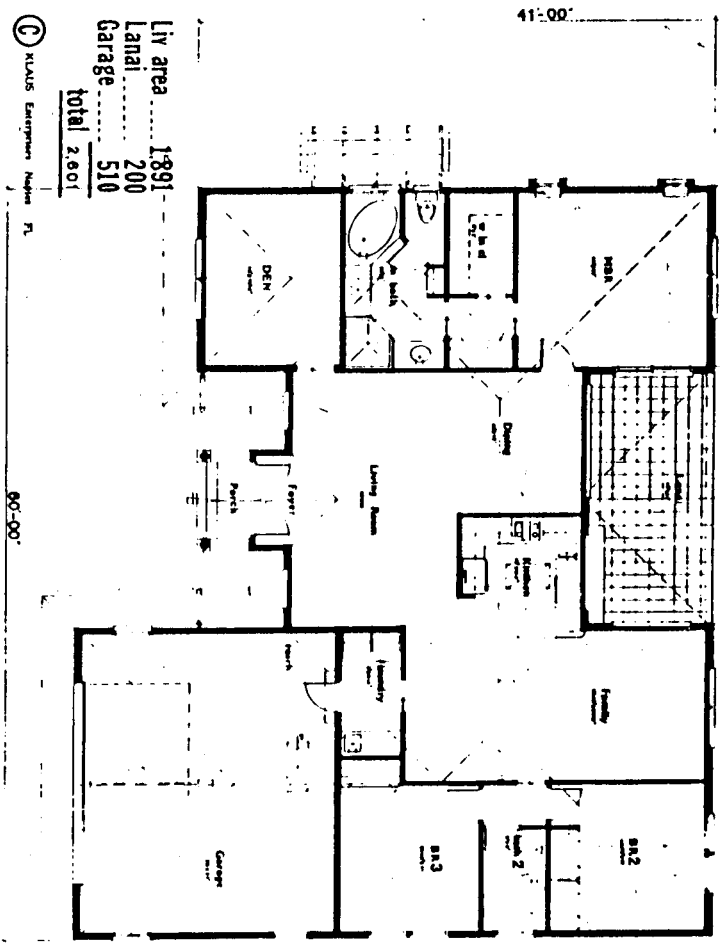


# GARDEN HOMES AT MOON LAKE



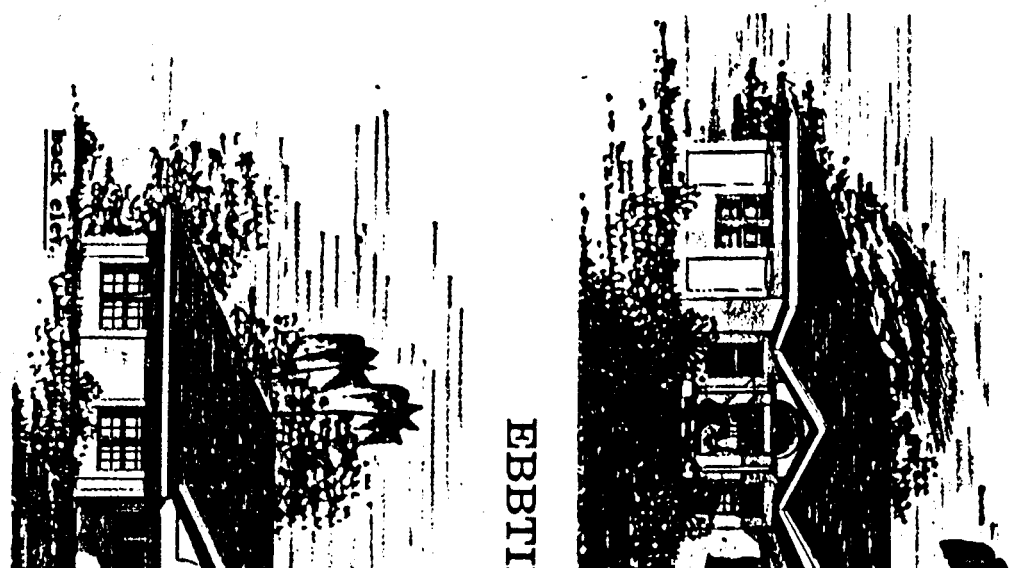
## Villa Capri

- 3-Bedroom
- 2 Car Garage
- Enclosed Yard
- Tile Roof
- No Common Walls
- 1,631 Air Conditioned Square Feet



Liv area ..... 1891  
 Lanai ..... 200  
 Garage ..... 510  
 total 2601

(P) KLAS Enterprises, Naples, FL



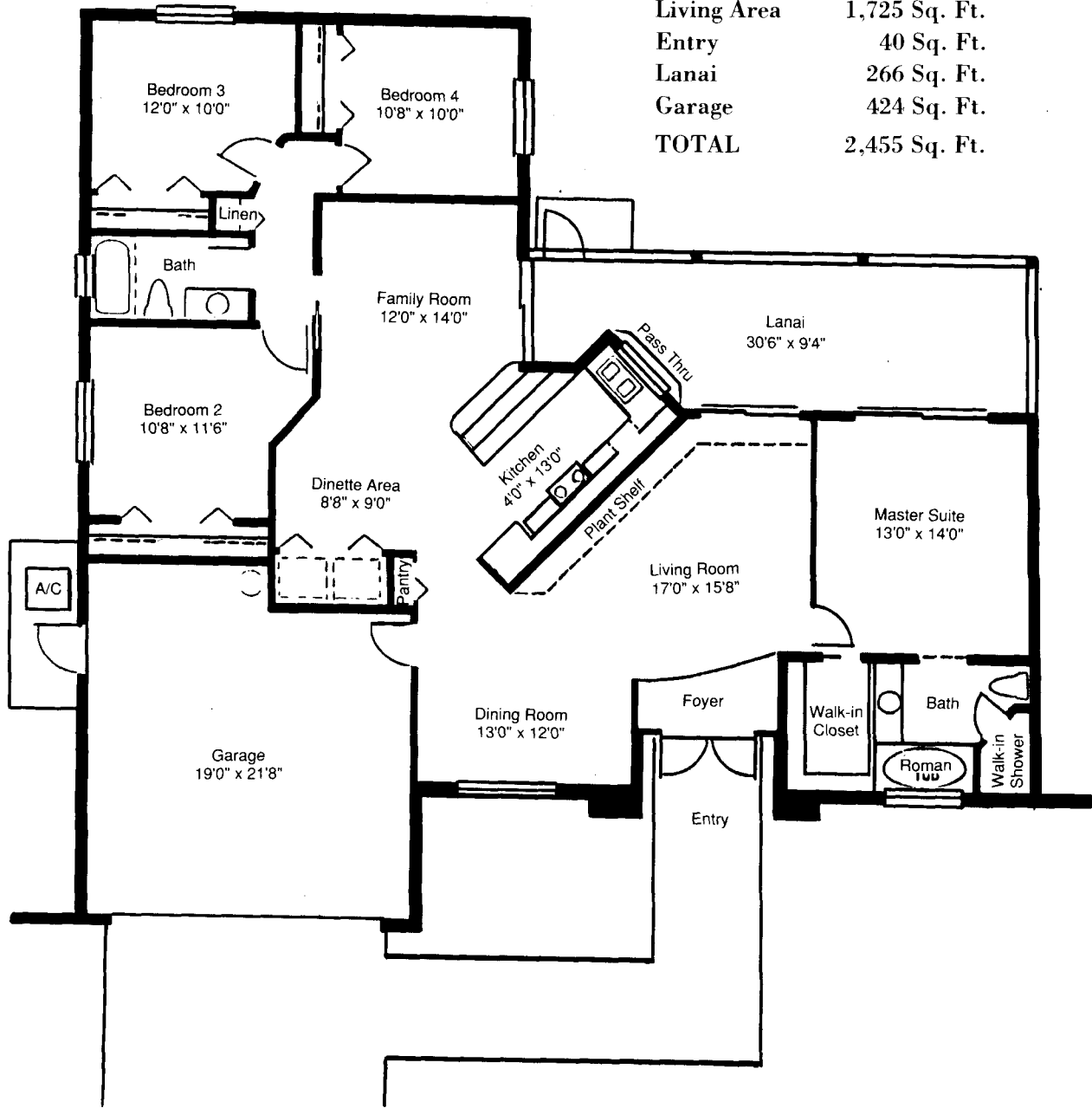


# EXECUTIVE HOMES AT MOON LAKE

**\$7,000  
REBATE**  
OFFER EXPIRES AUG. 1, 1998

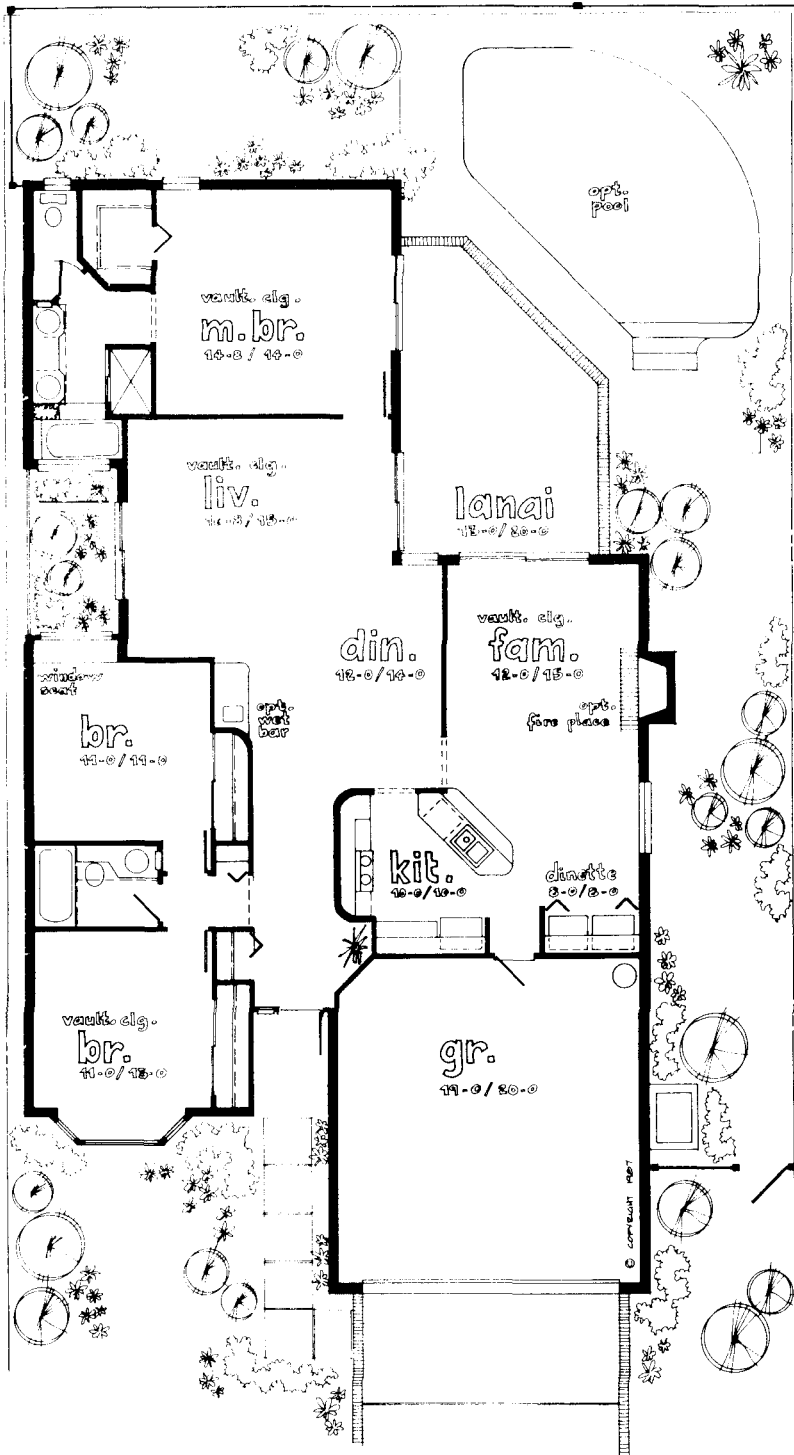
## Moon Shadow

Living Area	1,725 Sq. Ft.
Entry	40 Sq. Ft.
Lanai	266 Sq. Ft.
Garage	424 Sq. Ft.
<b>TOTAL</b>	<b>2,455 Sq. Ft.</b>





# GARDEN HOMES AT MOON LAKE



**STYLE A**



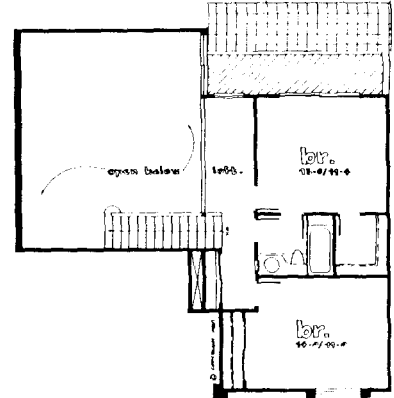
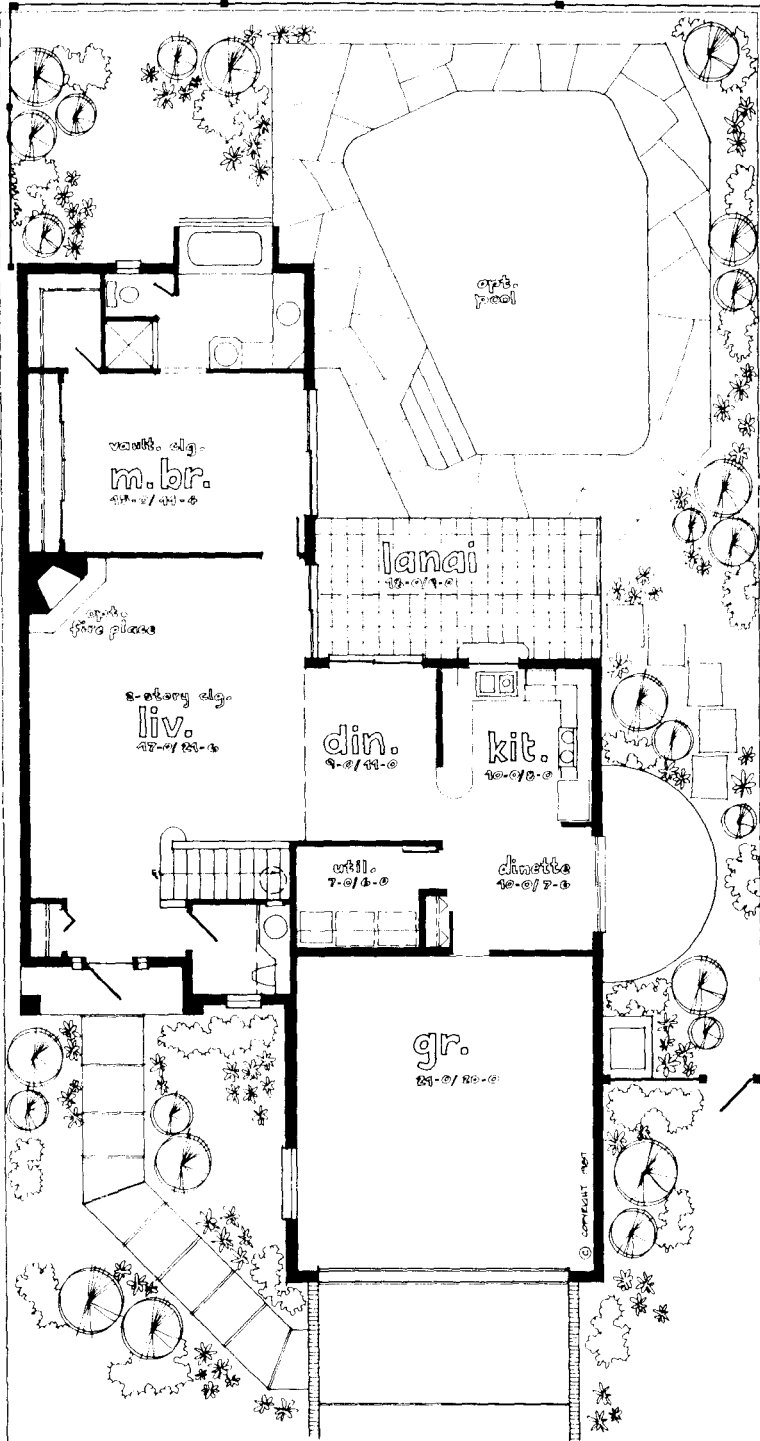
**STYLE B**

## Tropicale

- 3-Bedroom
- 2 Car Garage
- Enclosed Yard
- Tile Roof
- No Common Walls
- 1,640 Air Conditioned Square Feet



# GARDEN HOMES AT MOON LAKE



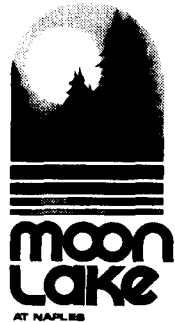
2nd FLOOR



## Catalina Sur Mer

- 3-Bedroom
- 2 Car Garage
- Enclosed Yard
- Tile Roof
- No Common Walls
- 1,745 Air Conditioned Square Feet



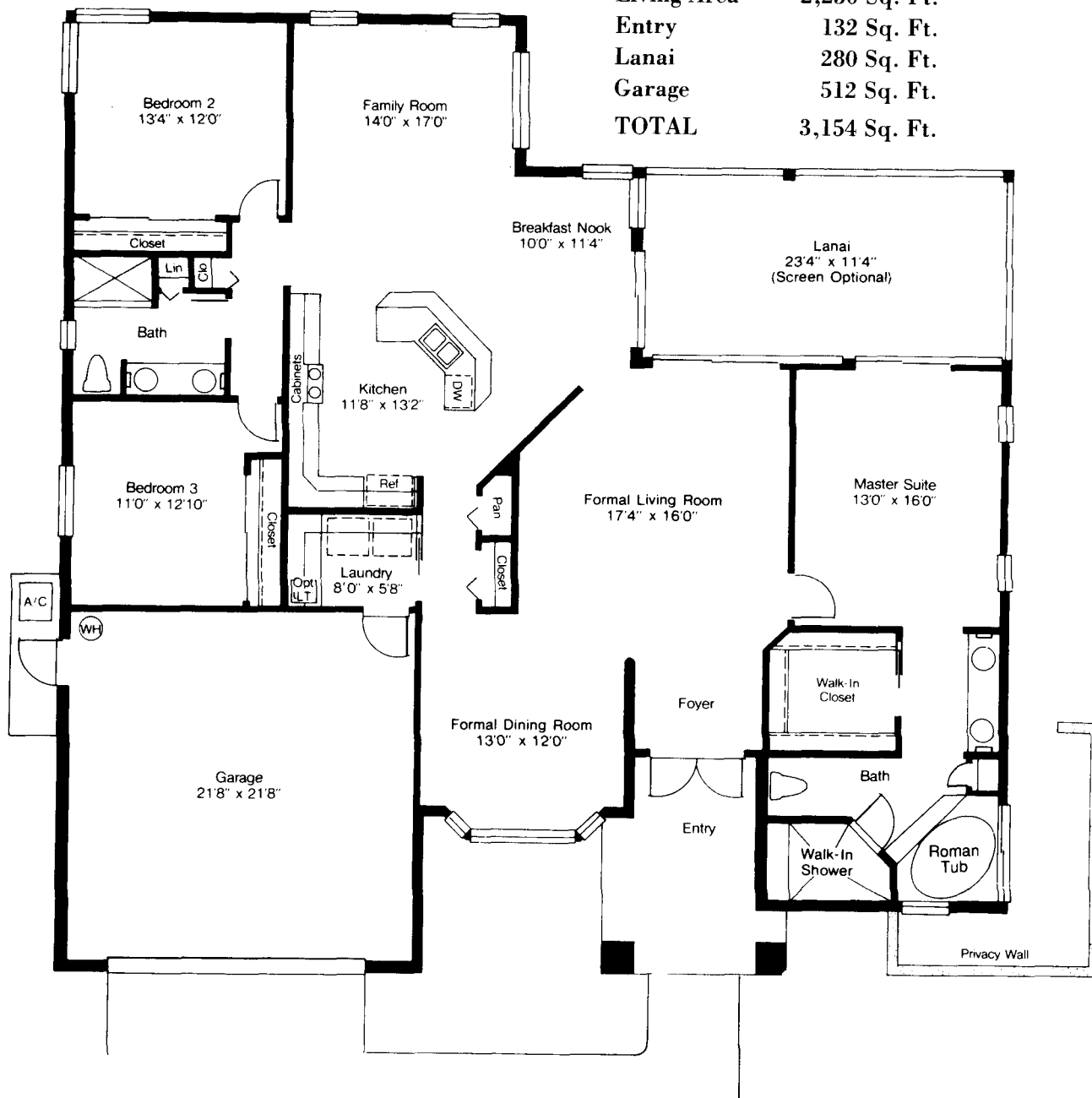


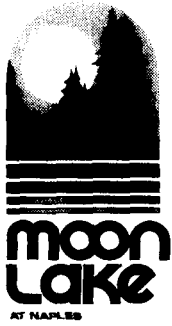
# EXECUTIVE HOMES AT MOON LAKE

**\$9,000  
REBATE**  
OFFER EXPIRES AUG. 1, 1998

## Eclipse

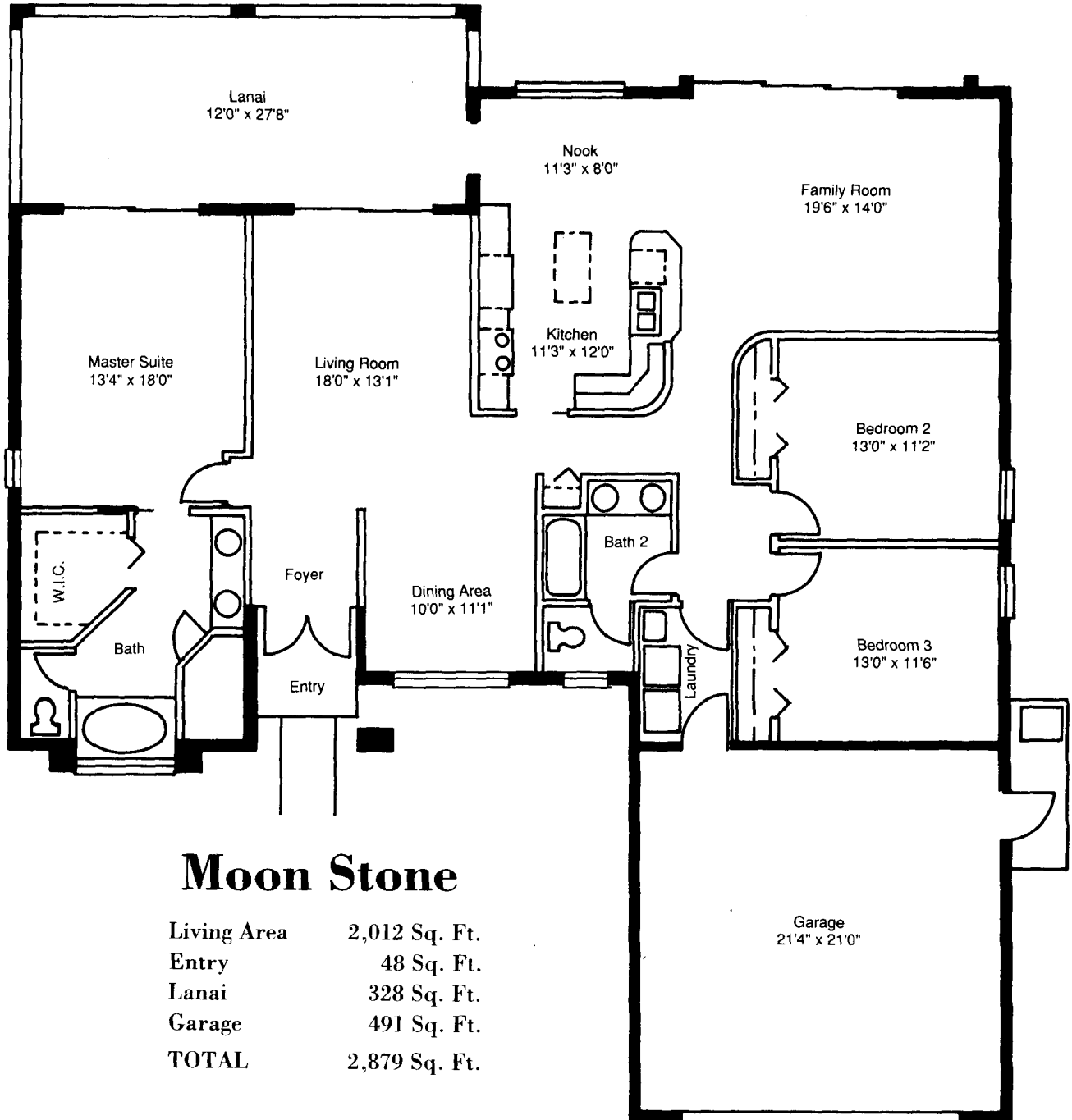
Living Area	2,230 Sq. Ft.
Entry	132 Sq. Ft.
Lanai	280 Sq. Ft.
Garage	512 Sq. Ft.
<b>TOTAL</b>	<b>3,154 Sq. Ft.</b>



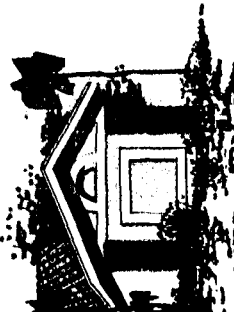


# EXECUTIVE HOMES AT MOON LAKE

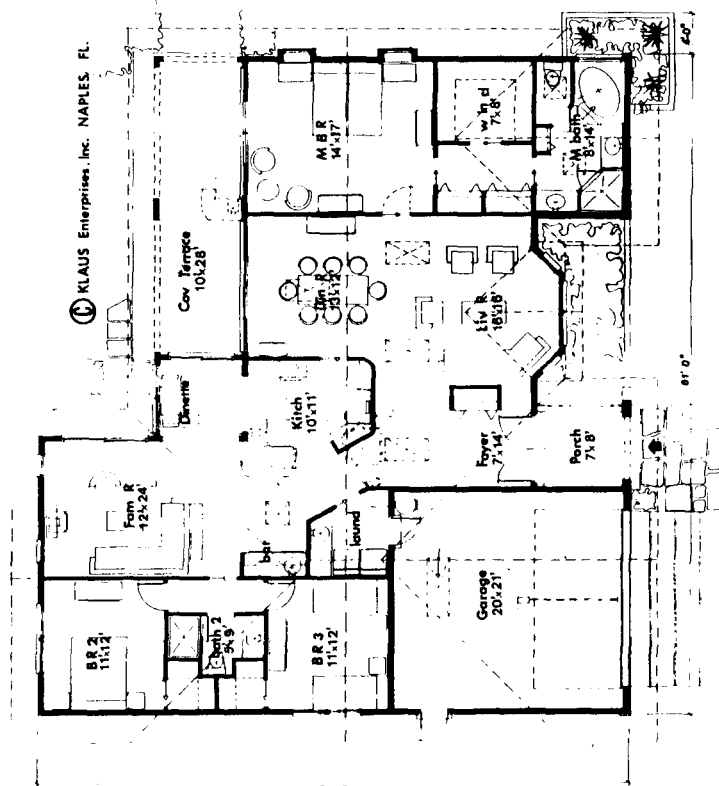
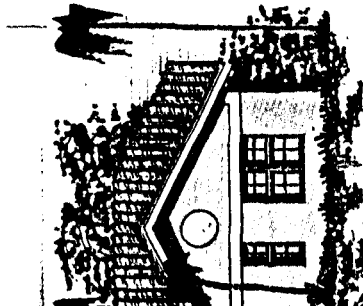
**\$8,000  
REBATE**  
OFFER EXPIRES AUG. 1, 1995



10-11-78



WAR



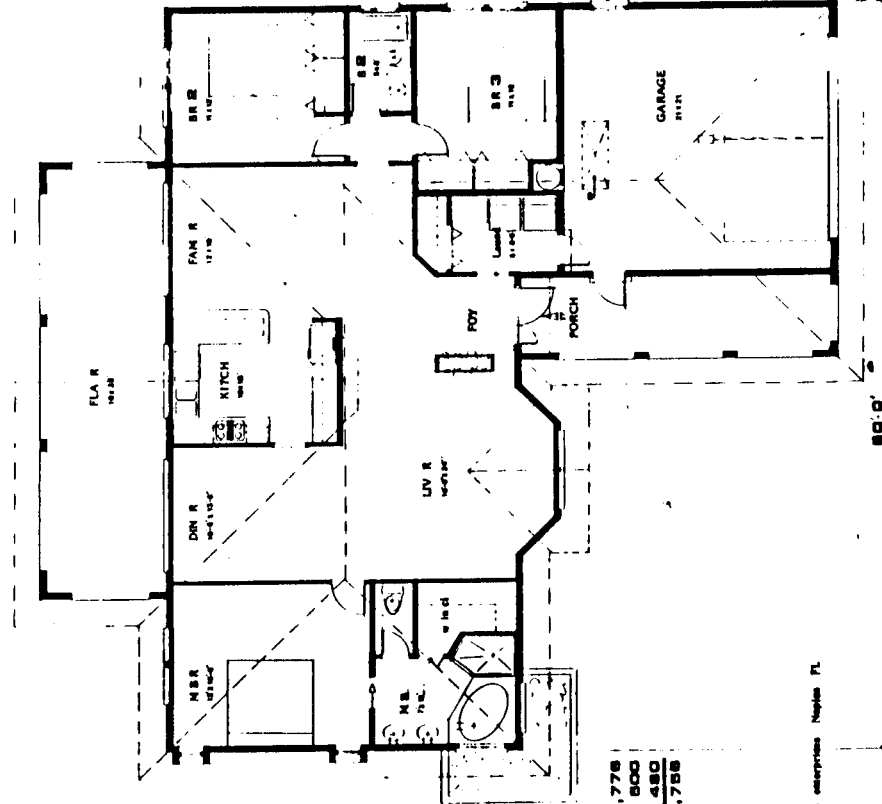
0.98

Living area	2,015
Cov terrace	280
Porch	65
Garage	400
<b>Total</b>	<b>2,820</b>

# US ENTERPRISES & REALTY CORPORATION OF NAPLES PRESENTS

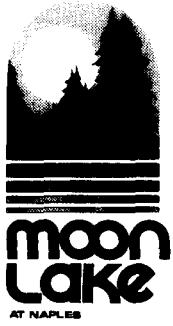


T



Living area ..... 1,776  
 Porch & P.R. .... 800  
 Garage ..... 480  
 Total \$ 2,756

© KLAUS enterprises Naples FL

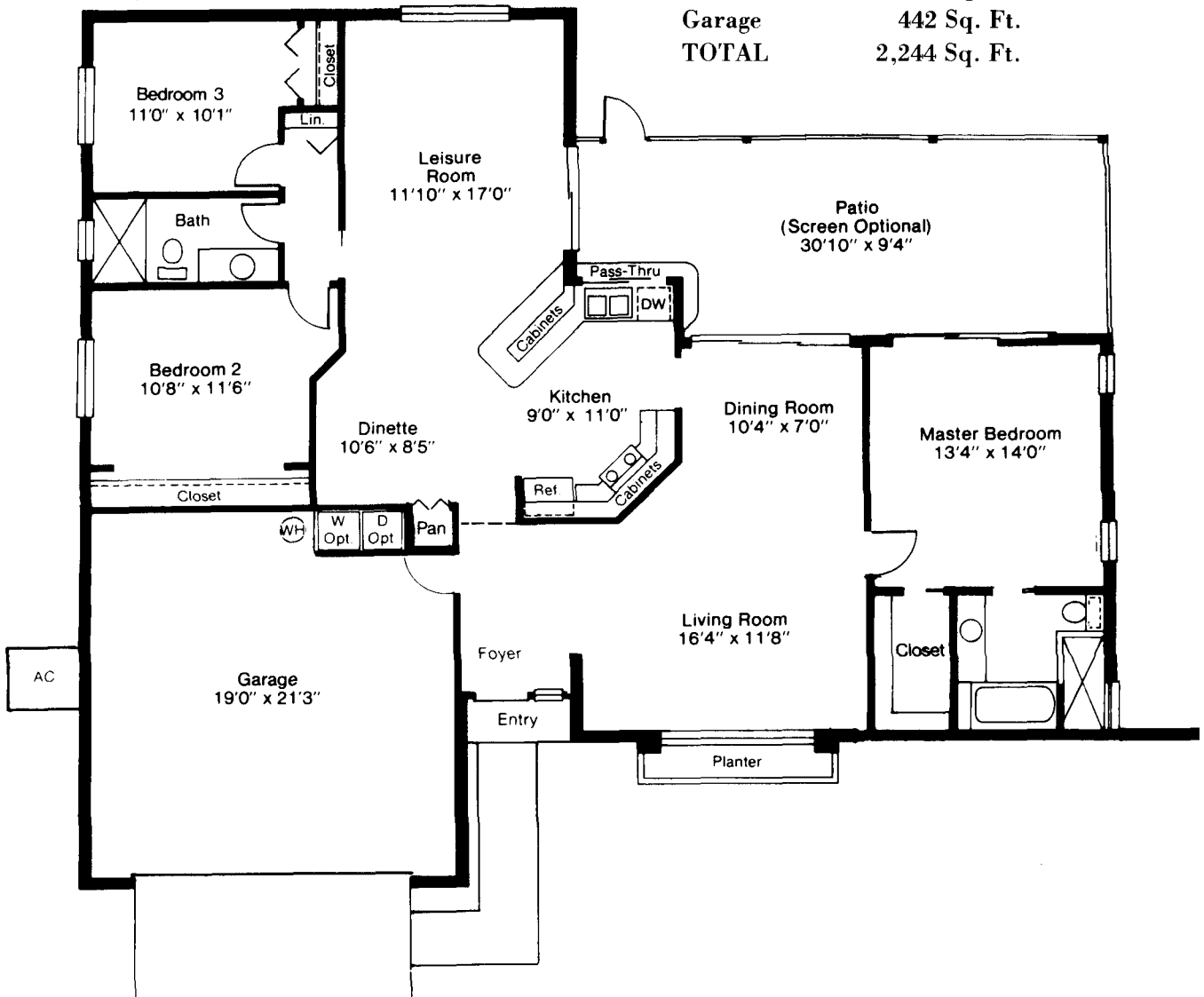


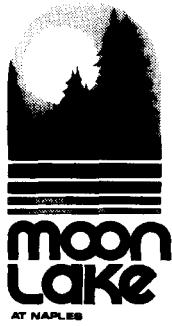
# EXECUTIVE HOMES AT MOON LAKE

**\$6,000  
REBATE**  
OFFER EXPIRES AUG. 1, 1990

## Crescent Moon

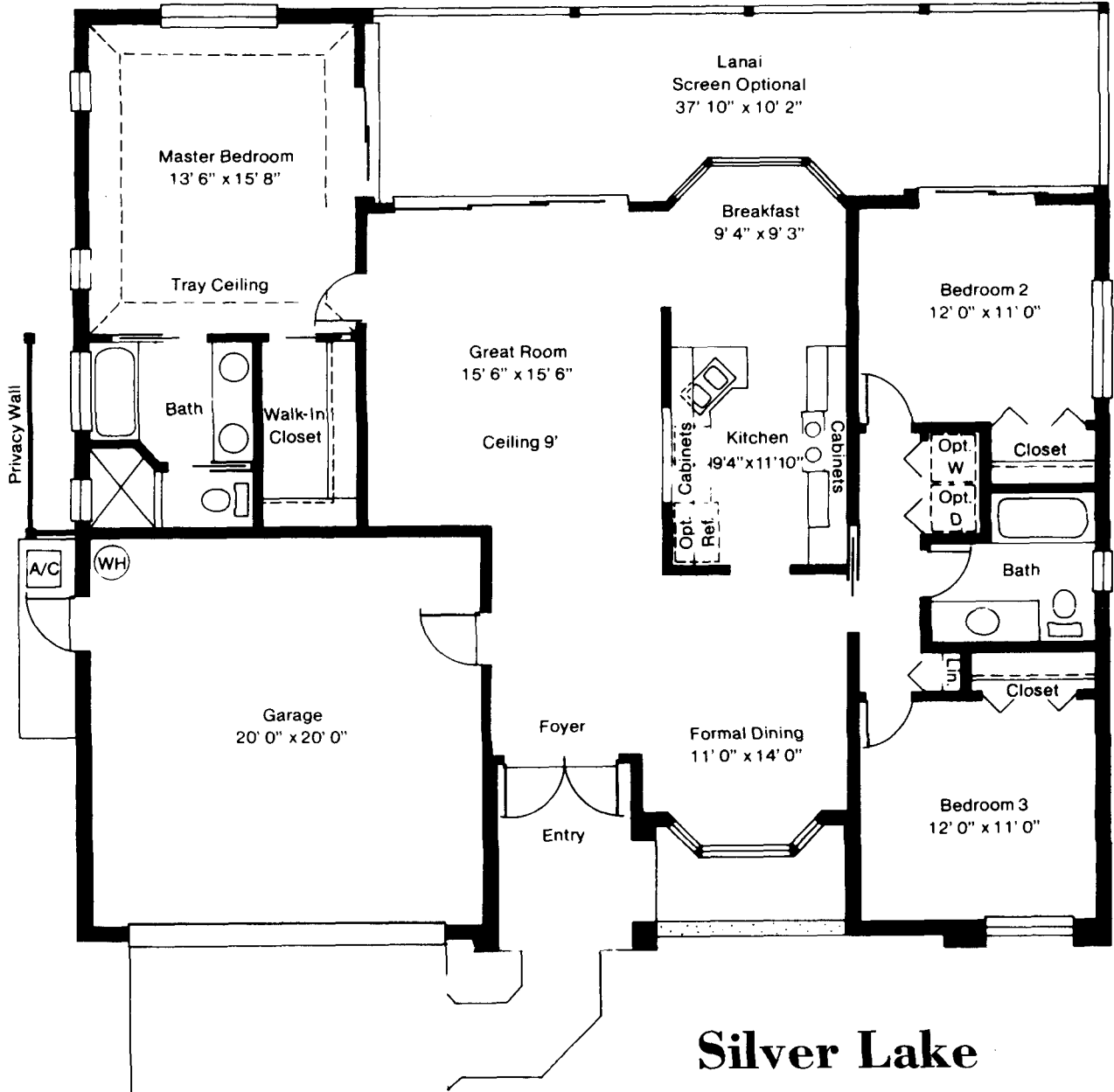
Living Area	1,620 Sq. Ft.
Entry	16 Sq. Ft.
Lanai	166 Sq. Ft.
Garage	442 Sq. Ft.
<b>TOTAL</b>	<b>2,244 Sq. Ft.</b>





# EXECUTIVE HOMES AT MOON LAKE

**\$6,000 REBATE**  
OFFER EXPIRES AUG. 1, 199



## Silver Lake

Living Area	1,605 Sq. Ft.
Entry	375 Sq. Ft.
Lanai	441 Sq. Ft.
Garage	77 Sq. Ft.
<b>TOTAL</b>	<b>2,498 Sq. Ft.</b>