

THE OSPREY

It is rare indeed that a house can elicit a sense of home in the first time visitor the way the Osprey does. From its stylistic arrangement to its elegant touches, the Osprey is more than you would ever imagine. It is a prestige home that surrounds you in luxury, charm, and beauty. A home where entertaining guests is as comfortable as relaxing on a lazy Sunday afternoon.

THE CATHEDRAL

There's a special feeling of elegance and grace as you move about the Osprey. Spanning the Master Suite, the Great Room, the Kitchen, and the Dining Room, the 16 foot cathedral ceiling highlights your furnishings, decor, and works of art. Few other homes afford you this spacious and comfortable ambiance.

THE COOKERY

This is more than a kitchen. Exquisitely designed custom Eurostyle cabinets are brilliant white with black pulls, and topped with black natural granite polished to a mirror finish. One can only appreciate this marvelous room in person, but be assured, you'll have all the space...plus all the latest fixtures and appliances you'll need to prepare that intimate romantic dinner, or entertain a house full of guests.

The Cookery is conveniently styled for easy entry to both the formal Dining Room or the casual Breakfast Room which overlooks the Lanai and Pool. And the planter ledge around the Cookery perimeter lends a pleasing splash of foliage and flowers.

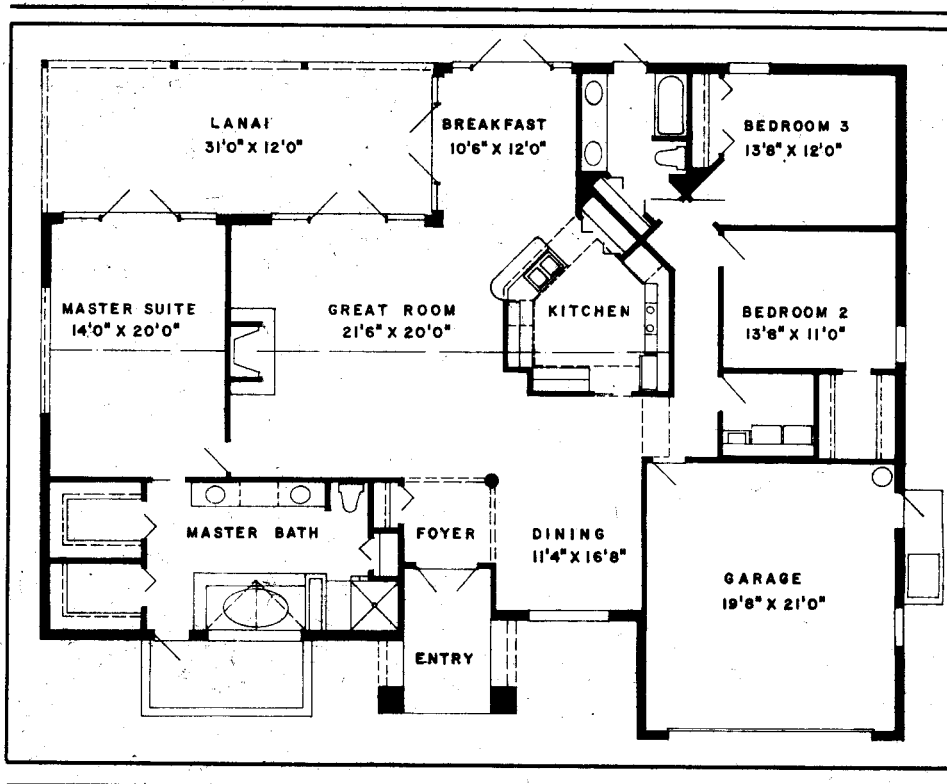
THE ORCHID GARDEN

This is truly a unique Master Bath and Dressing Suite. The large open shower and whirlpool tub overlook your own tropical hideaway...a private orchid garden. On the opposite side of this spacious suite, white lacquer cabinets are topped with beautiful blue pearl natural granite and, of course, his and hers lavatories. Elegant vanity lighting, backlit glass block steps leading to the tub, and two large walk-in closets add the final touches to this very personal retreat.

THE WATERFALL

You'll feel as though you're lounging in an exclusive resort as you gaze out on the rock waterfall that cascades into your private swimming pool. The Osprey is designed to give you both a view and access to the pool area from

the Master Suite, the Breakfast Room, the Great Room, the Lanai, and the Guest Bath. The perfect spot for entertaining and lounging, the pool complex has a private shower and dressing area, and a custom BBQ pit.



THE ENVIRONMENT

The location of the Osprey reflects the quality of the home itself. Longshore Lake is a prestigious residential community of distinctive homes nestled around more than 88 acres of meandering lake. Not for everyone, Longshore Lake is for only a few very discriminating people who expect the best in life.

The Osprey is the perfect venue for dignified living at Longshore Lake. From the outside one can see at a glance how the gable roof and palladium windows make this a showcase home of elegance and distinction. Every detail has been considered. From the bright white Lifetile roof to the slate sculptured driveway. From the covered entry to meticulous landscaping...it is certainly a home worthy of envy.

Fred Fleming



Custom Homes Built With Pride
P.O. Box 7157
Naples, Florida 33941
(813) 263-0944

COLLIER COUNTY BUILDERS & CONTRACTORS ASSOCIATION

PARADE
OF

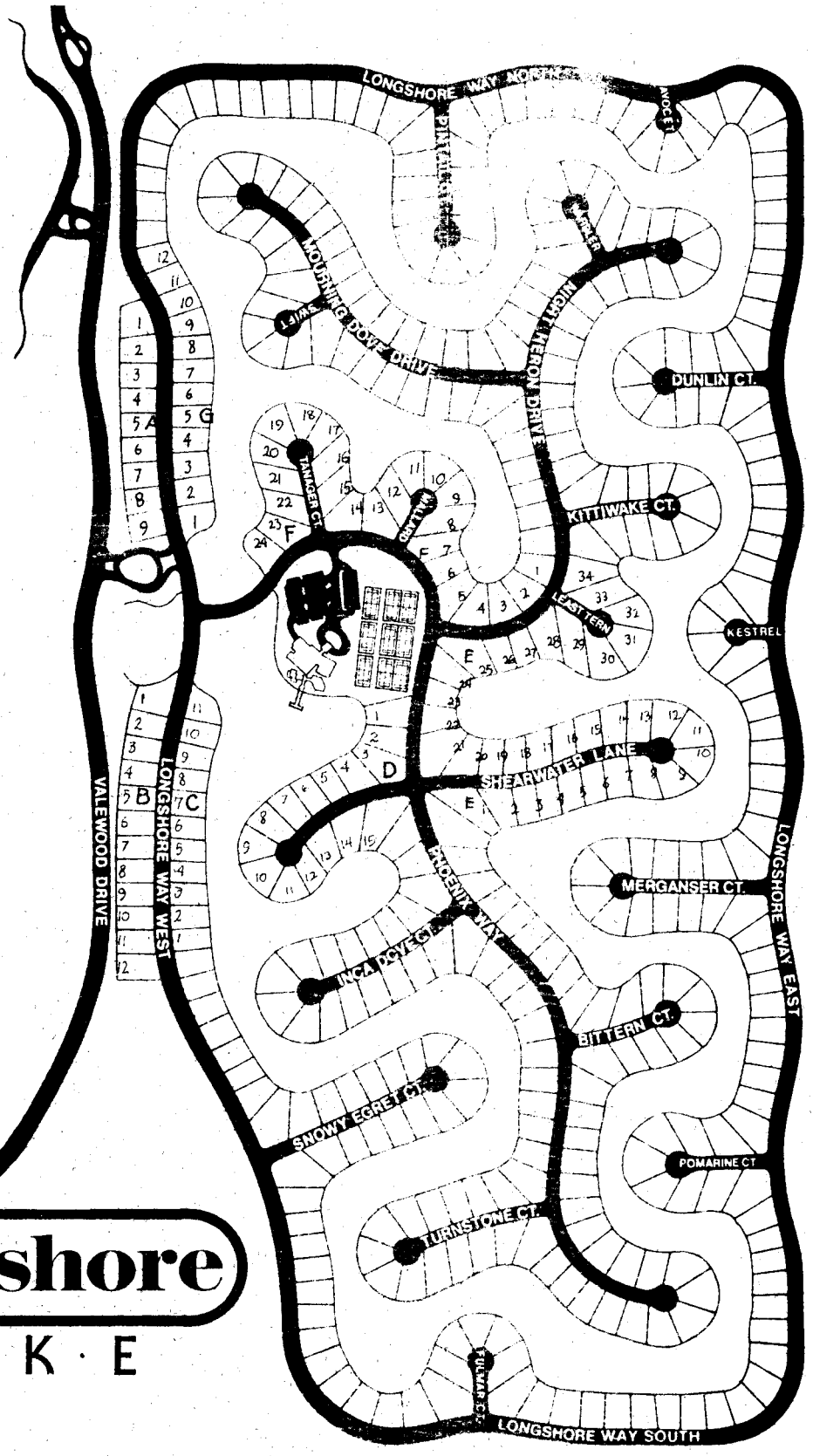


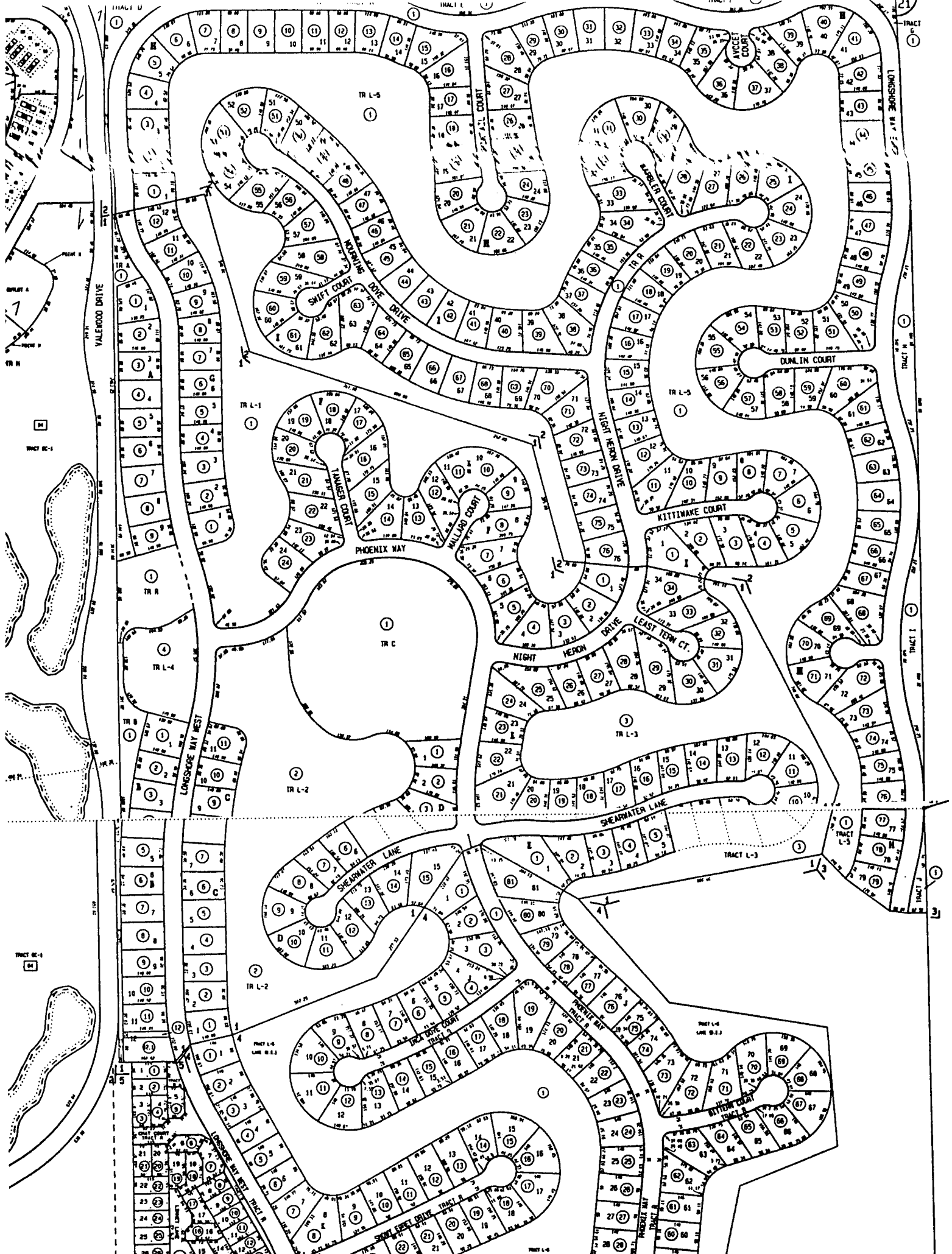
Longshore

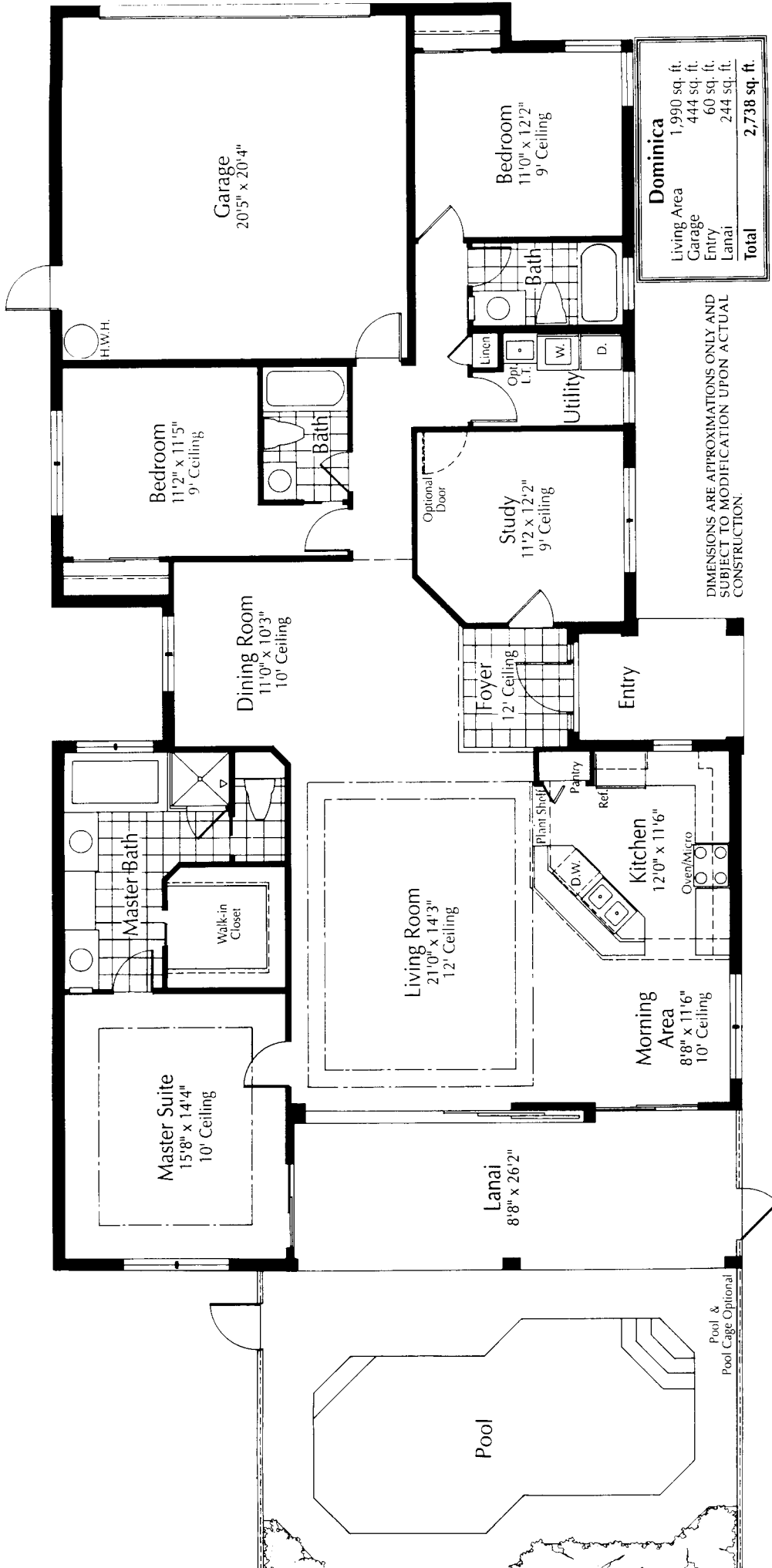
L · A · K · E

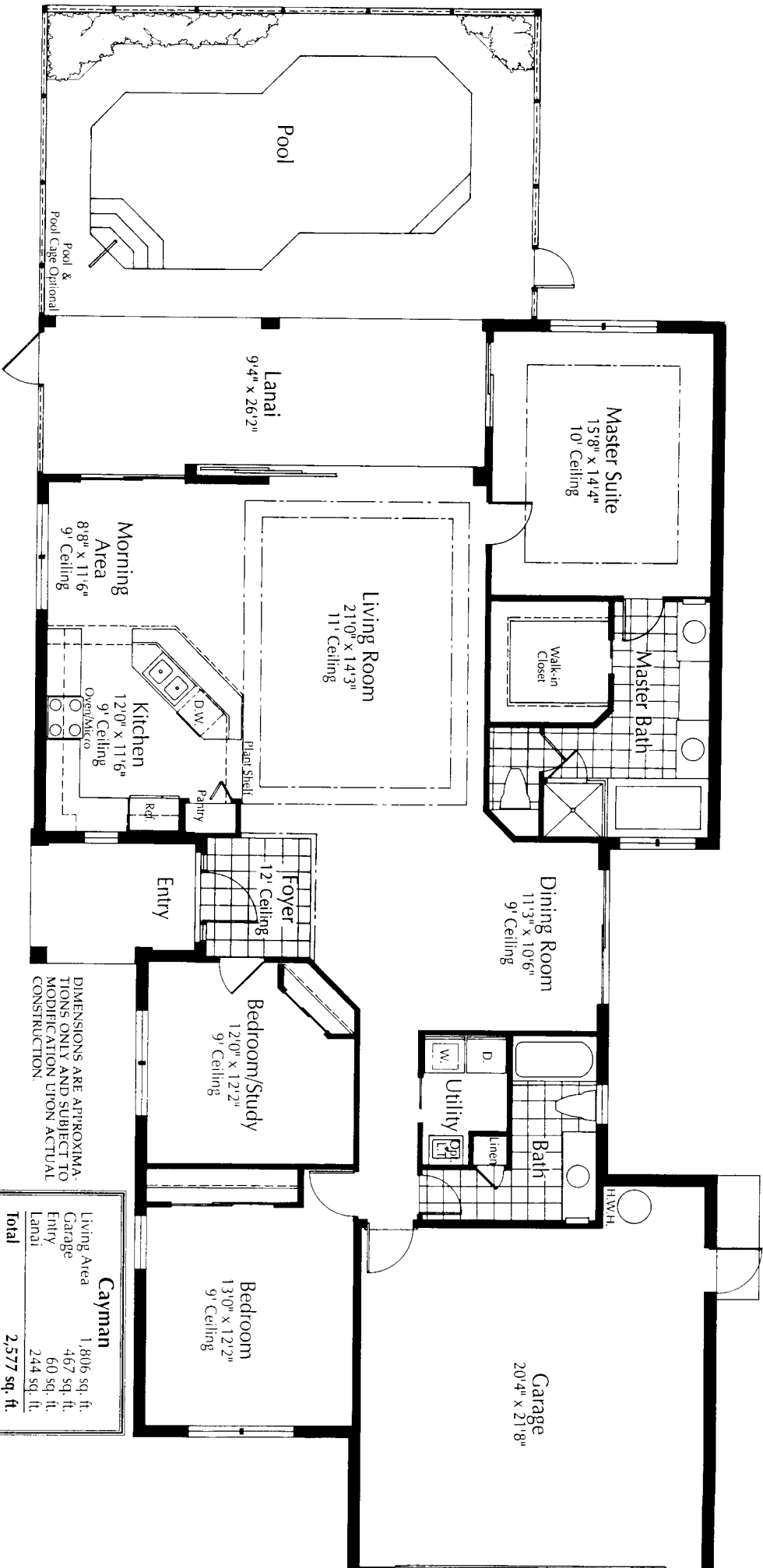
2-1

IMMOKALEE ROAD



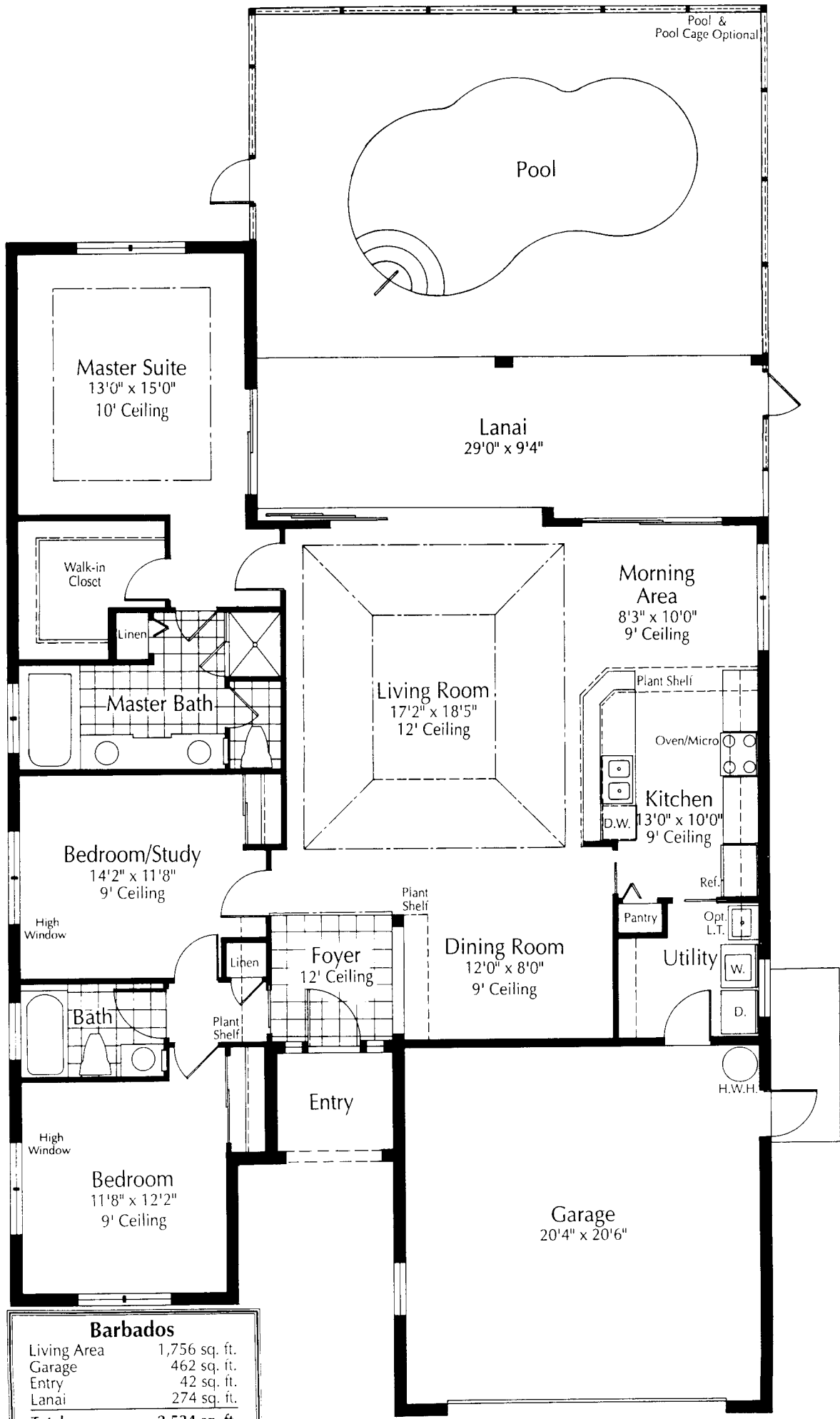






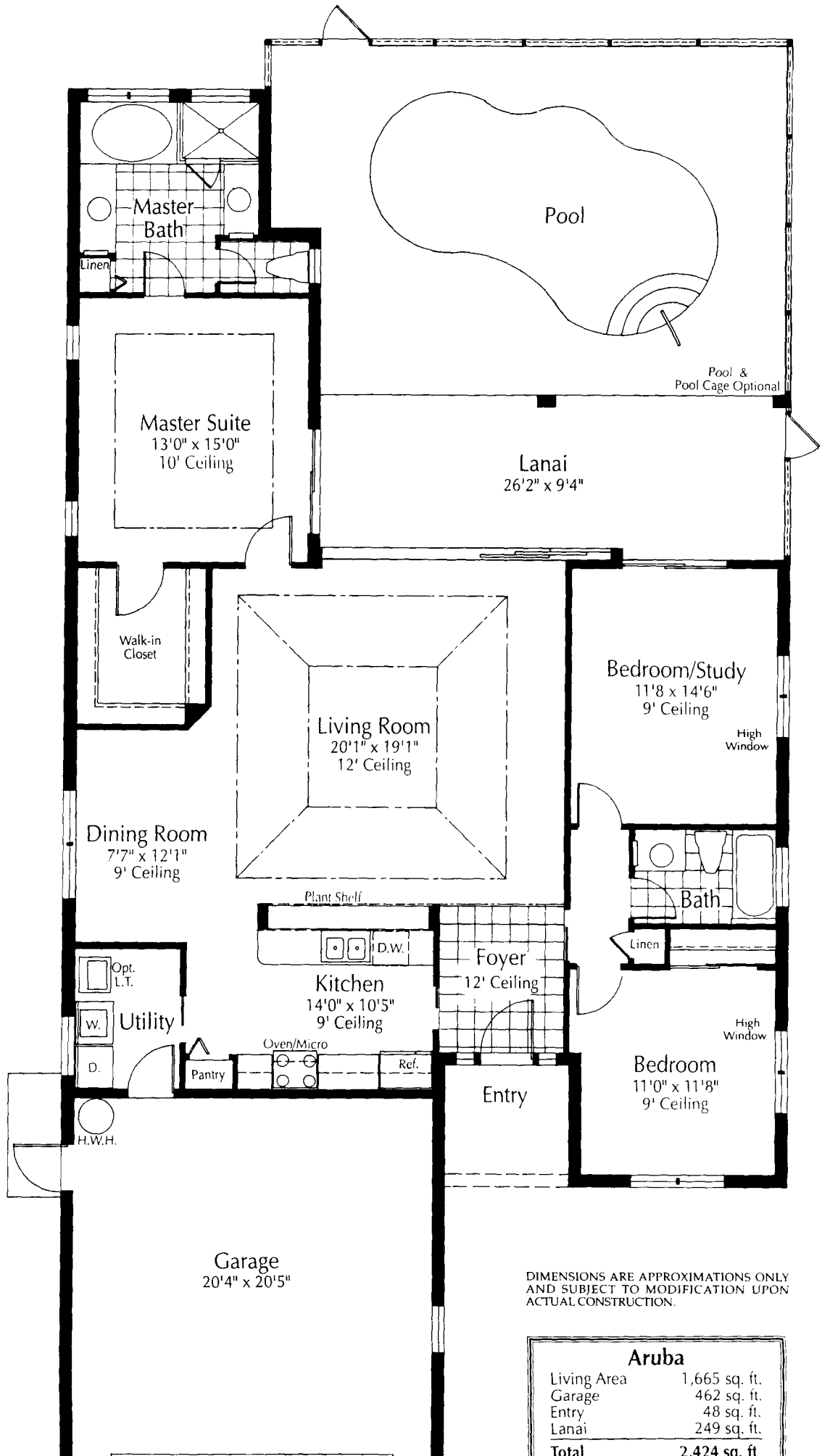
DIMENSIONS ARE APPROXIMATE. DIMENSIONS ONLY AND SUBJECT TO MODIFICATION UPON ACTUAL CONSTRUCTION.

Cayman	
Living Area	1,806 sq. ft.
Garage	467 sq. ft.
Entry	60 sq. ft.
Lanai	244 sq. ft.
Total	2,577 sq. ft.



Barbados	
Living Area	1,756 sq. ft.
Garage	462 sq. ft.
Entry	42 sq. ft.
Lanai	274 sq. ft.
Total	2,534 sq. ft.

DIMENSIONS ARE APPROXIMATIONS ONLY AND SUBJECT TO MODIFICATION UPON



DIMENSIONS ARE APPROXIMATIONS ONLY AND SUBJECT TO MODIFICATION UPON ACTUAL CONSTRUCTION.

Aruba	
Living Area	1,665 sq. ft.
Garage	462 sq. ft.
Entry	48 sq. ft.
Lanai	249 sq. ft.
Total	2,424 sq. ft.