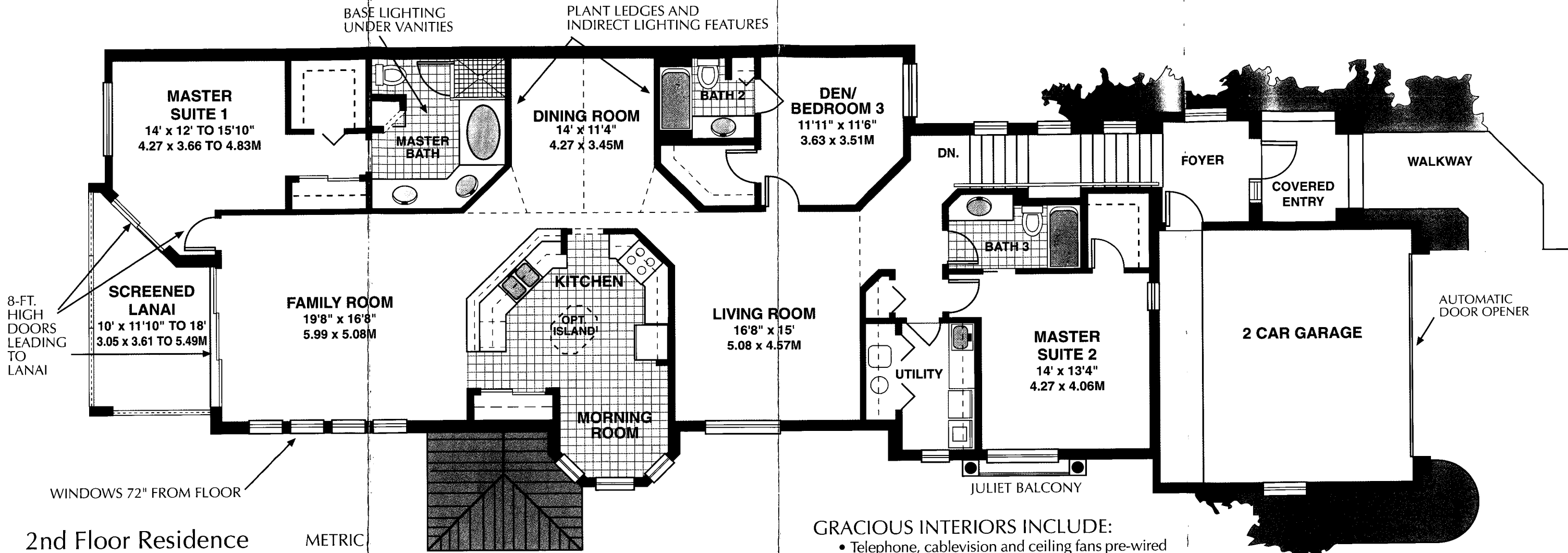


# 2nd Floor Residence



2nd Floor Residence		METRIC
LIVING	2,430 Sq. Ft.	225.75 S.M.
LANAI	147 Sq. Ft.	13.66 S.M.
GARAGE	435 Sq. Ft.	40.41 S.M.
ENTRY PORCH	70 Sq. Ft.	6.50 S.M.
<b>TOTAL</b>	<b>3,082 Sq. Ft.</b>	<b>286.32 S.M.</b>

2nd Floor Ceiling - Vaulted To 15'

### GRACIOUS INTERIORS INCLUDE:

- Telephone, cablevision and ceiling fans pre-wired
- Smoke detectors
- High efficiency central heating and air conditioner system with humidistat
- 6-Panel doors with brass hardware

### CONVENIENT LAUNDRY ROOM:

- General Electric large capacity washer and dryer
- Laundry tub and mica countertop
- Raised-panel cabinets

### DECORATOR DESIGNED BATHROOMS:

- Cultured marble countertops
- Roman tub in master bath
- Ceramic tile shower and flooring

### GOURMET KITCHENS:

- Indirect lighting
- Deluxe General Electric white-on-white appliances; Side-by-side refrigerator with icemaker and water dispenser, Self-cleaning oven and range, Built-in microwave oven, Built-in dishwasher and disposal
- Corian counter tops
- Luxurious raised-panel cabinets (choice of white or oak)
- White porcelain dual compartment sink