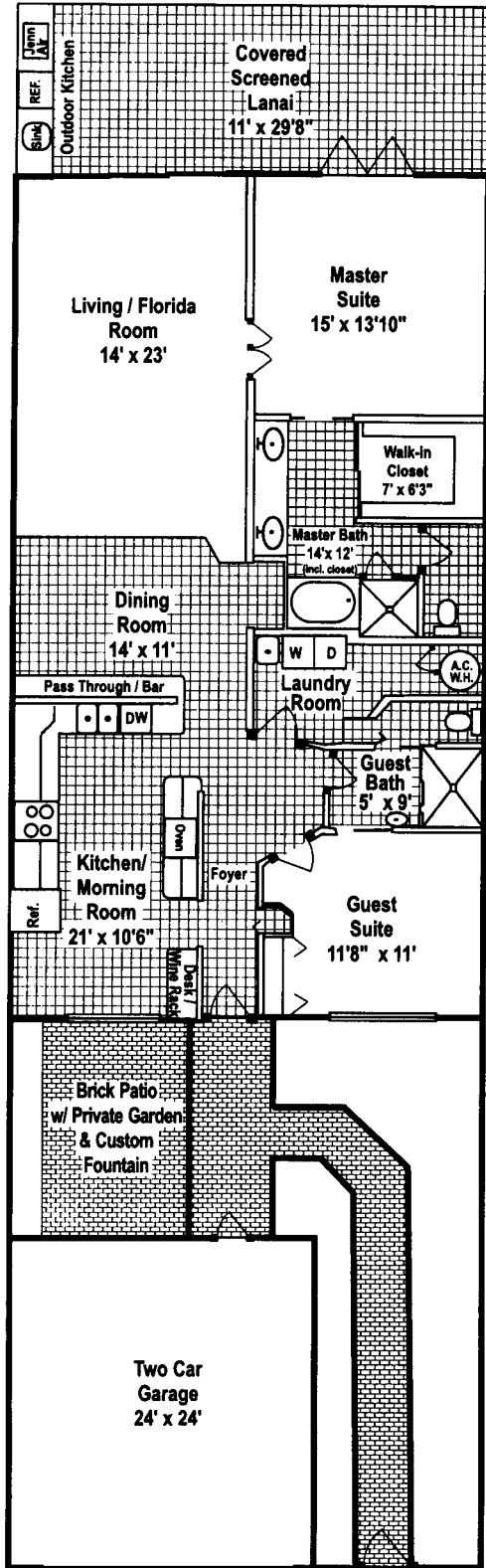


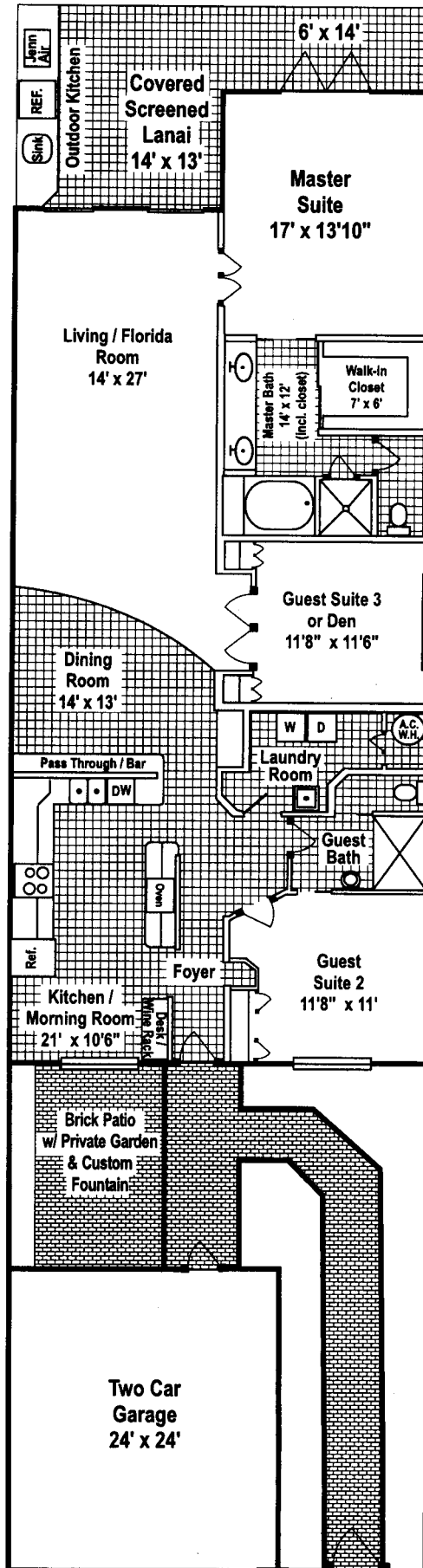
# Magnolia Cove Villas

Two Bedroom/Two Bathroom



Square Footage	
Living Area	1,566
Lanai	326
Garage	576
<b>Total</b>	<b>2,468</b>

Three Bedroom/Two Bathroom

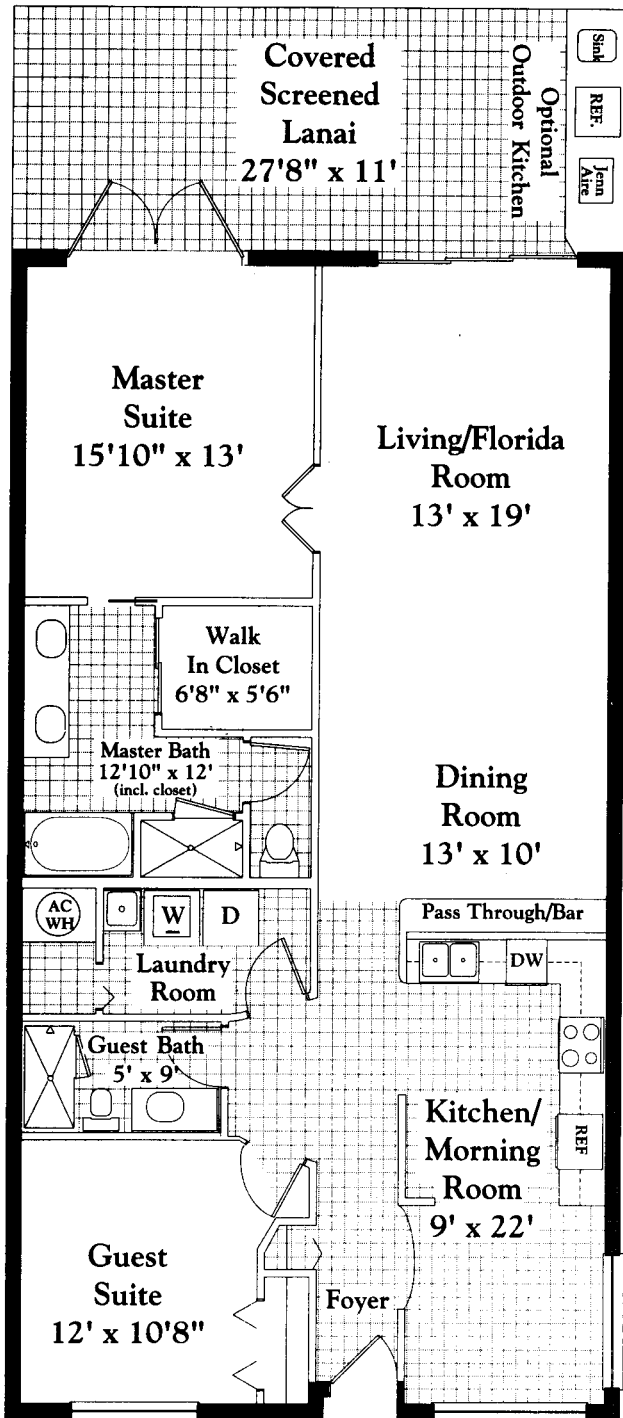


Square Footage	
Living Area	1,860
Lanai	308
Garage	576
<b>Total</b>	<b>2,744</b>

# Cascades

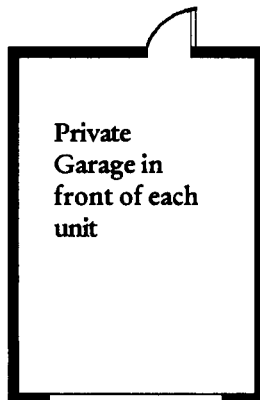
## Two Bedroom, Two Bathroom

## Three Bedroom, Two Bathroom

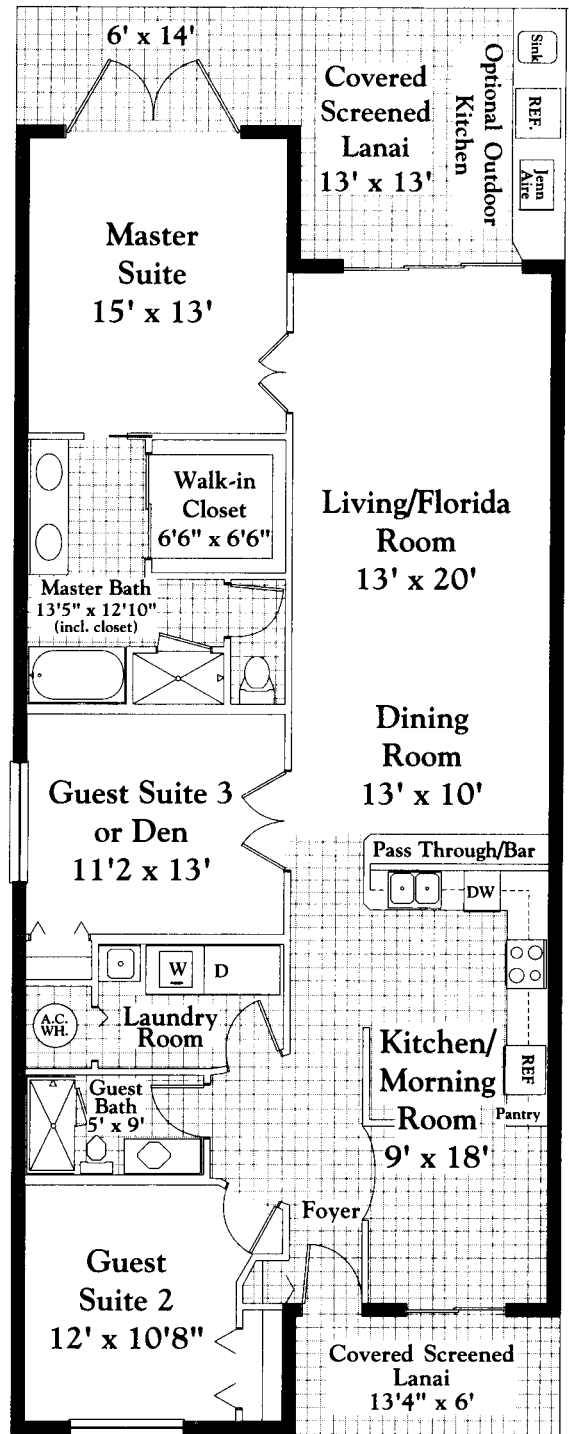


Individual Entry  
to 2nd Floor  
Apartments

Square Footage	
Living Area	1,351
Lanai	304
Garage	288
<b>Total</b>	<b>1,943</b>

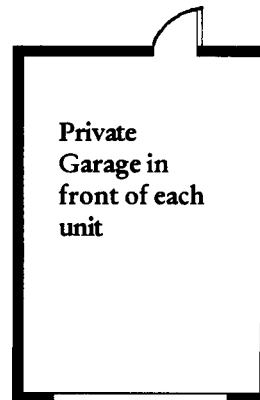


Private  
Garage in  
front of each  
unit



Individual  
Entry to  
2nd Floor  
Apartments

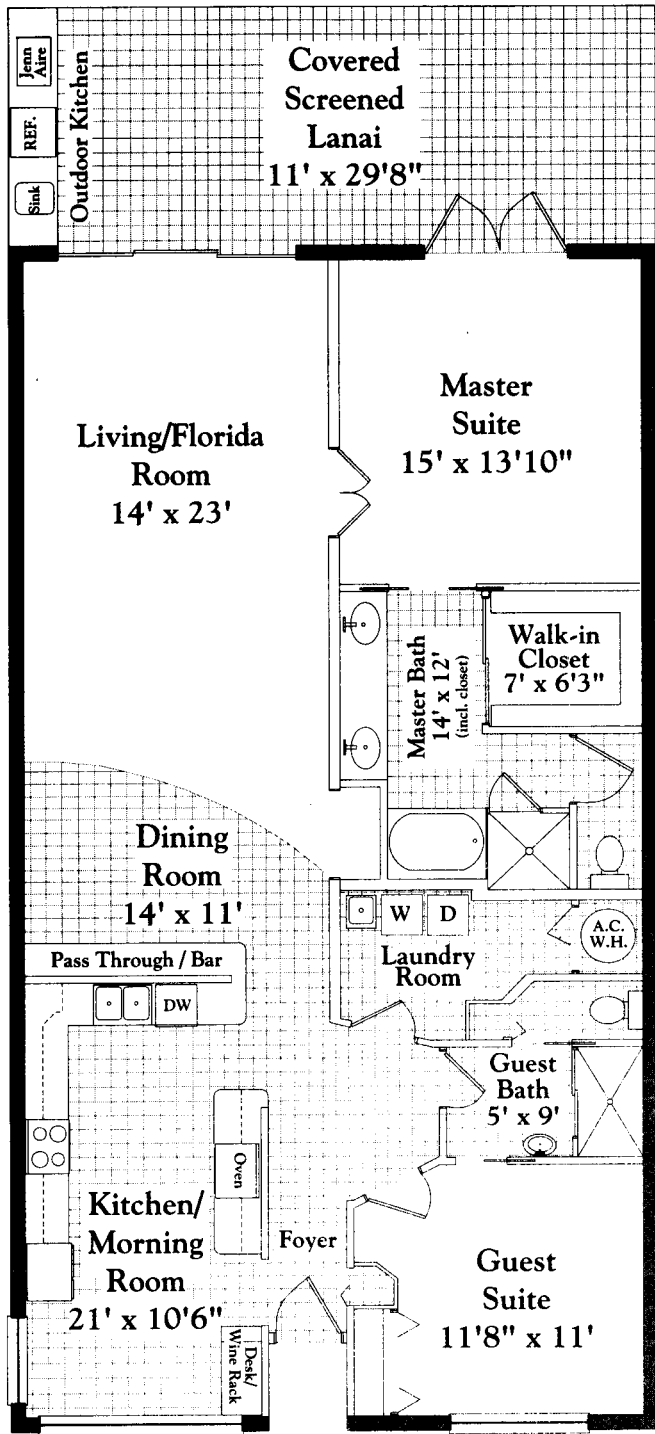
Square Footage	
Living Area	1,551
Lanai	333
Garage	288
<b>Total</b>	<b>2,172</b>



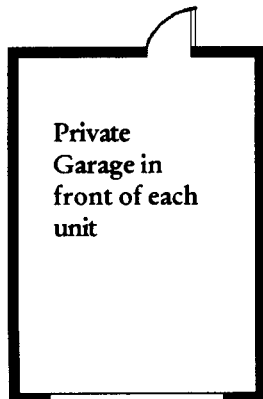
Private  
Garage in  
front of each  
unit

# Water Crest

## Two Bedroom, Two Bathroom



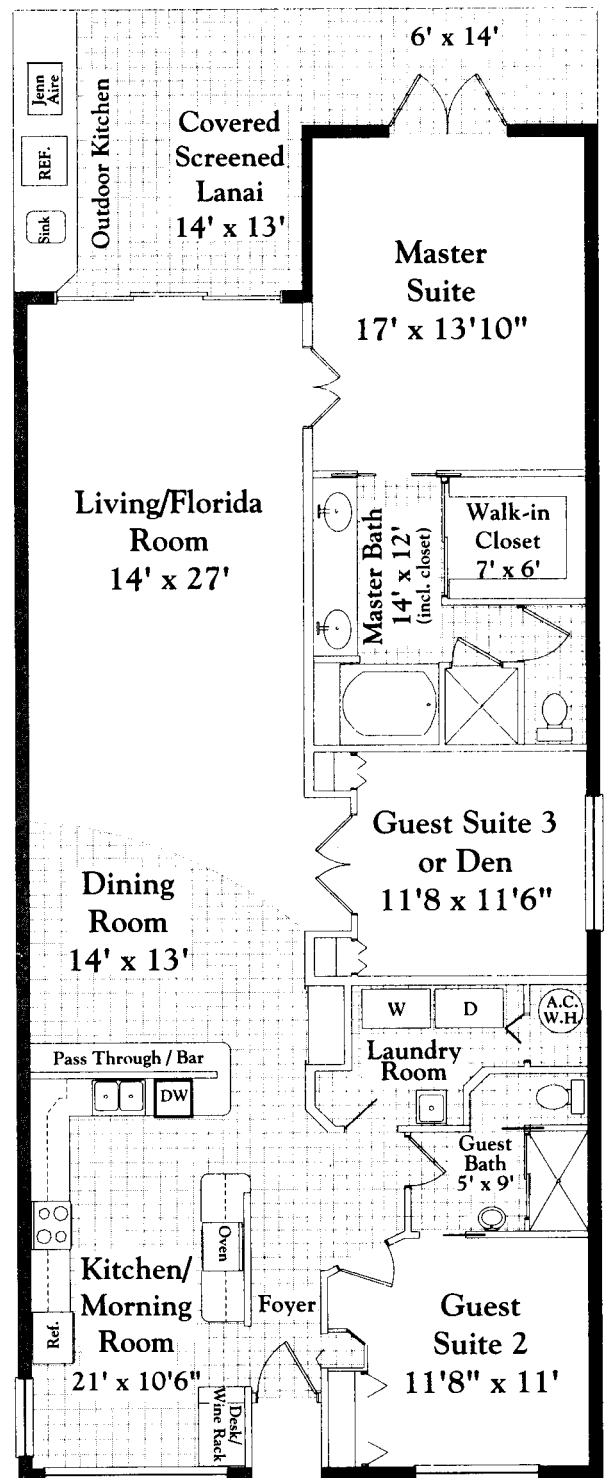
Individual Entry



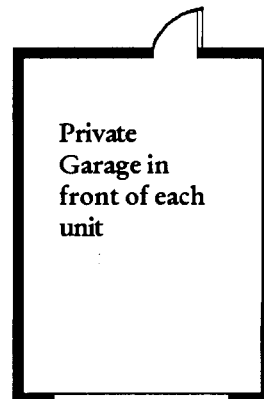
Private Garage in front of each unit

Square Footage	
Living Area	1,566
Lanai	326
Garage	288
<b>Total</b>	<b>2,180</b>

## Three Bedroom, Two Bathroom



Individual Entry

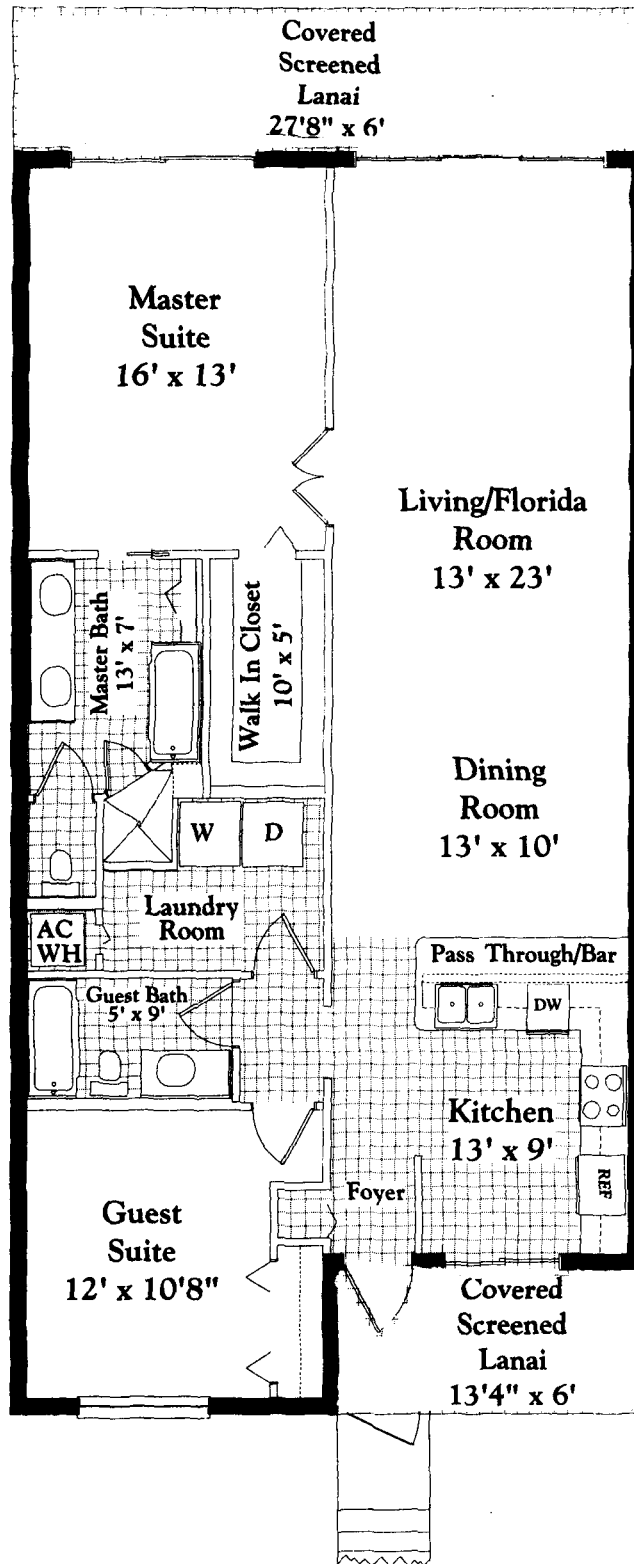


Private Garage in front of each unit

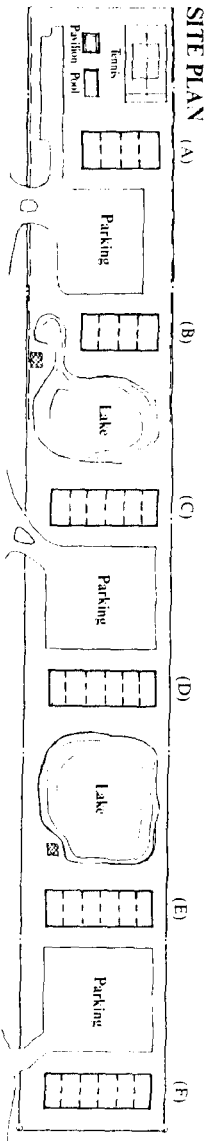
Square Footage	
Living Area	1,860
Lanai	308
Garage	288
<b>Total</b>	<b>2,456</b>

# *Rose Wood*

## *Two Bedroom, Two Bathroom*



<i>Square Footage</i>	
Living Area	1,271
Lanai	247
Carport with Storage	240
<b>Total</b>	<b>1,758</b>

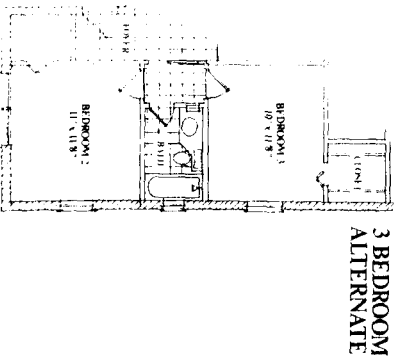
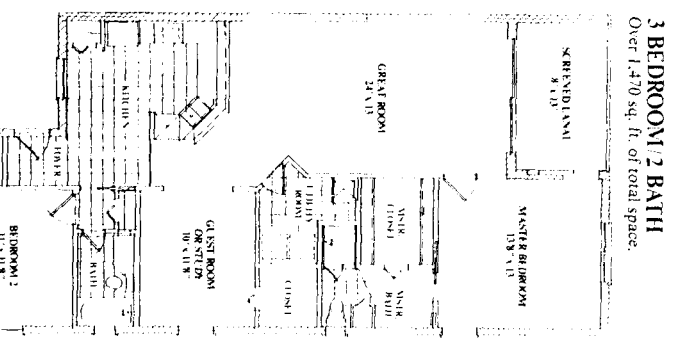
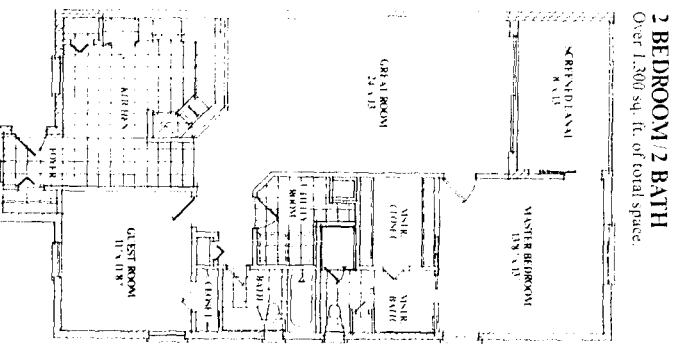


**RECREATIONAL AMENITIES**

- 20' x 40' Heated Swimming Pool
- Sunbck and Position
- Two Chickee Hutts

**FEATURES COMMON TO BOTH FLOOR PLANS:**

- 30" Range with Range Hood
- Dishwasher
- Refrigerator with Ice-maker
- Metal Cabinets with Adjustable Shelves
- Pantry
- Cove Lighting
- Linen Closet
- Ceramic Tile in Bathrooms
- Bathroom Windows (in end units)
- Padded Carpet
- Textured Ceilings and Walls
- Smooth Walls (Kitchen & Bath)
- Colonial Paneled Doors
- Wood Louvered Bi-Fold Closet Doors
- White Anodized Aluminum Windows and Door Frames
- Screens on All Windows
- Marble Window Sills
- Tempered Sliding Glass Doors
- Screened Lanai
- 2 TV Outlets, 2 Phone Outlets
- 2 Ceiling Fan Outlets
- 2 Smoke Detectors
- Individual Central Air/Heat
- 30 Gallon Quick Recovery Water Heater
- Washer & Dryer Hook-up in Laundry Room
- Covered Parking



**KINGWOOD** offers a unique opportunity to enjoy a luxurious lifestyle in one of our affordable residences. Located in one of Naples' fastest growing areas, you will be just minutes away from the spectacular Gulf of Mexico, Naples' finest restaurants and distinctive shopping.

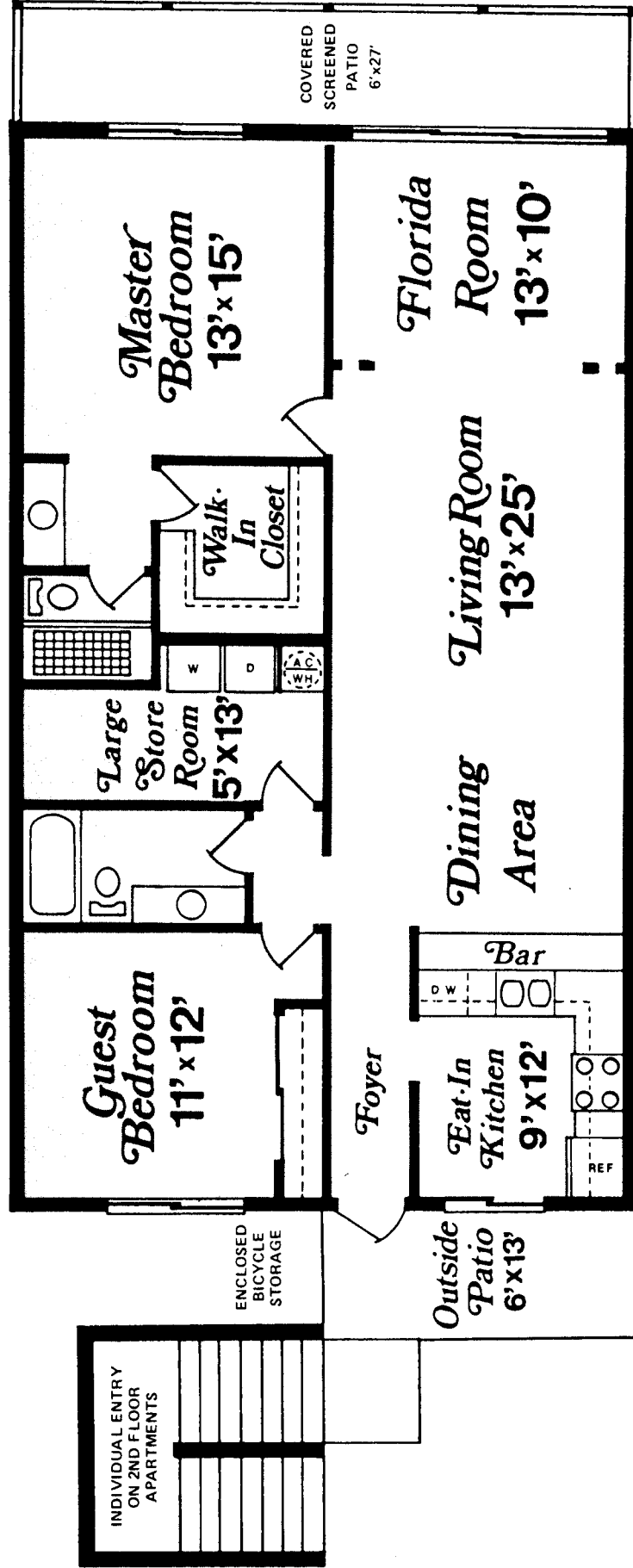
**KINGWOOD** is designed for your comfort and enjoyment. Choose from one of our exciting two or three bedroom floor plans. Our site plan features two beautiful lakes, an oversized heated pool, sundeck, chickee huts (with BBQ facilities) and much more.

At **KINGWOOD** you can live like royalty... at an affordable price.

ORAL REPRESENTATIONS CANNOT BE RELIED UPON. AS CORRECTLY STATING REPRESENTATIONS OF THE DEVELOPER. FOR CORRECT REPRESENTATIONS, MAKE REFERENCE TO THE DOCUMENTS REQUIRED BY SECTION 718.503, FLORIDA STATUTES. TO BE FURNISHED BY A DEVELOPER TO A BUYER OR LESSEE.

ALL MEASUREMENTS APPROXIMATE AND SUBJECT TO CHANGE IN ORDER TO PERMIT USE OF THE LATEST AND FINEST IN MATERIALS AND DESIGN.

- 2 BEDROOM — 2 BATH
- FLORIDA ROOM
- EAT-IN KITCHEN WITH PASS-THRU BAR
- COMPLETE APPLIANCE PACKAGE
  - A. 15 CU. FT. REFRIGERATOR
  - B. CONTINUOUS CLEANING RANGE
  - C. DISHWASHER
  - D. DISPOSAL
  - E. STANDARD SIZE WASHER AND DRYER HOOK-UP
- LARGE 5 x 13 STORAGE ROOM
- CHOICE OF CUSTOM CABINETS
- TOTAL CARPETING — YOUR CHOICE OF COLORS
- EASY CLEAN TILE BATHS
- BEAUTIFUL LANDSCAPING
- MOST BEAUTIFUL SWIMMING POOL IN S.W. FLORIDA
- DOUBLE LAUNDRY CABINETS
- OUTSIDE BICYCLE STORAGE
- PATIO OFF KITCHEN
- 6 x 27 SCREENED REAR PATIO
- VAULTED CEILINGS — 2ND FLOOR



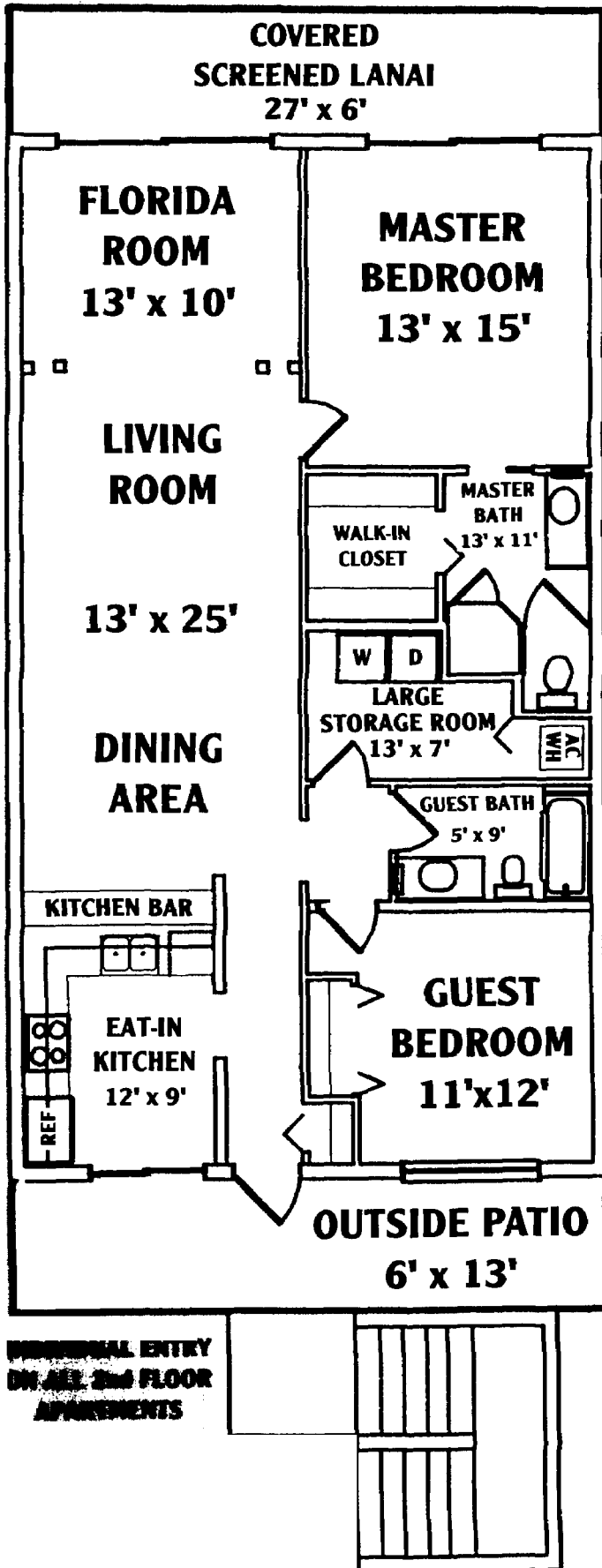
TOTAL AREA: INCLUDING OUTSIDE PORCH AND STORAGE AREA 1434 SQ. FT.

"THIS ADVERTISEMENT IS NOT AN OFFERING. NO OFFERING CAN BE MADE UNTIL AN OFFERING PLAN IS FILED WITH THE DEPARTMENT OF LAW OF THE STATE OF NEW YORK. THIS ADVERTISEMENT IS MADE PURSUANT TO COOPERATIVE POLICY STATEMENT NO. 1 ISSUED BY THE NEW YORK STATE ATTORNEY GENERAL."

## 2-Bedroom 2-Bathroom Apartment

# Orchid Falls

7200 DAVIS BLVD. NAPLES, FL 33962  
813-774-5457 • 1-800-328-POOL



### EAT-IN KITCHEN

Corian Countertops and Double Sink  
European Cabinets  
Potscrubber Dishwasher  
Spacemaker Microwave Oven  
Self-Cleaning 30" Oven/Range  
Garbage Disposal  
22 Cu. Ft. Refrigerator  
Indirect Lighting

### BATHROOMS

Cultured Marble Vanity Tops  
Full-width Mirrors above Vanity

### MASTER BATH

Spacious Walk-in Closet with Air Conditioning and Extra Shelving  
Large Shower with Enclosure

### FLOOR COVERINGS

Ceramic Tile in Kitchen, Foyer, Dining, Laundry Room, Both Baths  
Carpet and Padding Throughout

### STRUCTURE

Masonry Constructed Carports  
Stucco Ceilings in Carports  
Textured Walls Throughout (except Kitchen and Baths, which have a smooth finish)  
Cathedral Ceilings Upstairs

### ADDITIONAL STANDARD FEATURES

8 Ceiling Fan Outlets  
4 Pre-Wired Cable Outlets  
3 Pre-wired Telephone Outlets  
Large Laundry Room  
Washer and Dryer in Each Unit  
2 Large Screened and Covered Lanais  
2 Parking Spaces Per Unit  
Private Stairways  
Storage Understairs  
Energy-efficient Central Heat and Air Conditioning  
Quick-recovery Hot Water Heater  
Water Pipes Wrapped with Sound-Resistant Insulation  
R-30 Value Insulation in Attic  
Insulation Between Units  
Wood Studs Throughout  
Marble Window Sills  
Underground Utilities  
Gutters on All Carports and Units  
2 Smoke Detectors  
Barrel Tile Roofs on All Units and Carports  
Brick Parking Area

### RECREATIONAL FACILITIES

**AIR-CONDITIONED CLUBHOUSE WITH KITCHEN AND DANCE FLOOR**

(Approximately 5,000 Sq. Ft.)

**LARGEST SWIMMING POOL IN SOUTHWEST FLORIDA**

(Approximately 11,200 Sq. Ft. of Water)

**LIGHTED TENNIS COURTS**

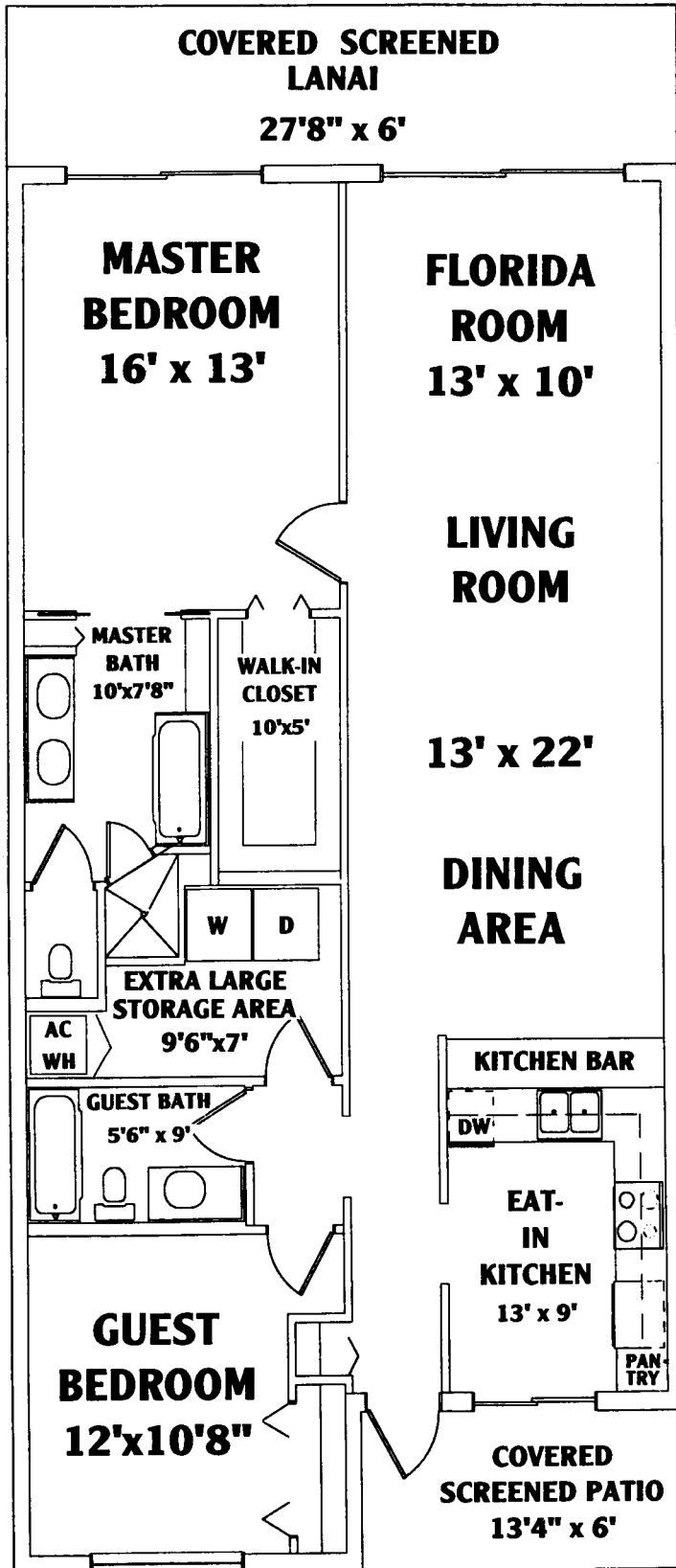
**SCULPTURED PRIVATE LAKE**

(Approximately 3.8 Acres)

# 2-Bedroom 2-Bathroom Apartment

# Jasmine Court

7200 DAVIS BLVD. NAPLES, FL 33962  
813-774-5457 • 1-800-328-POOL



Living Area ..... 1349  
Patio ..... 247  
Carport ..... 240  
**Total ..... 1836**

INDIVIDUAL ENTRY  
ON ALL 2nd FLOOR  
APARTMENTS

### EAT-IN KITCHEN

- European Cabinets with DuPont Corian Countertops
- G.E. Appliance Package
- Potscrubber Dishwasher
- Spacemaker Microwave Oven
- Self-Cleaning 30" Oven/Range
- Garbage Disposal
- Potscrubber Dishwasher
- 22 Cubic Foot Refrigerator with Water & Ice in Door
- Indirect Lighting

### BATHROOMS

- Cultured Marble Vanity Tops
- Full-width Mirrors above Vanity

### MASTER BATH

- Tiled Shower
- Linen Closet
- Twin Sinks and Full-Sized Tub

### FLOOR COVERINGS

- Ceramic Tile in Kitchen, Foyer, Dining, Laundry Room, Both Baths
- Carpet and Padding Throughout

### STRUCTURE

- 9' Ceilings on 1st Floor with 8' Sliding Glass Doors
- Vaulted Ceilings on 2nd Floor

### ADDITIONAL STANDARD FEATURES

- Spacious Walk-In Closet with Air Conditioning and Extra Shelving
- Washer and Dryer in Each Unit
- Large Laundry Room
- Quick-recovery Hot-Water Heater
- R-30 Value Insulation in Attic
- Insulation Between Units
- Energy-Efficient Central Heat and Air Conditioning
- Carports with Individual Secured Storage
- Fully Screened Patios in Each Unit
- Water Pipes Wrapped with Sound-Resistant Insulation
- Masonry Constructed Carports
- Barrel Tile Roofs on All Units and Carports
- Brick Parking Lots and Walkways
- Gutters on All Units and Carports
- 8 Ceiling Fan Outlets
- Underground Utilities
- 2 Smoke Detectors
- Marble Window Sills

### RECREATIONAL FACILITIES

5,000 SQ. FT. AIR-CONDITIONED CLUBHOUSE  
WITH KITCHEN AND DANCE FLOOR

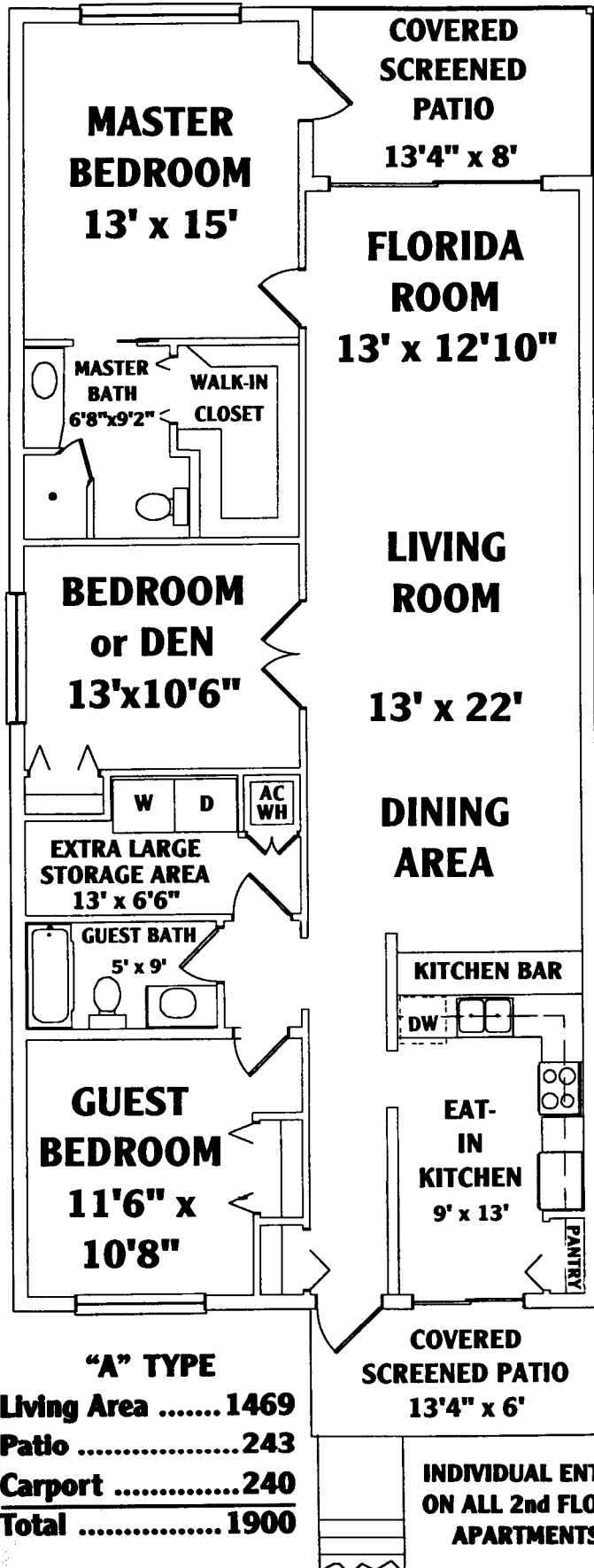
LARGEST SWIMMING POOL IN SOUTHWEST FLORIDA  
(Approximately 11,200 Sq. Ft. of Water)



# 3-Bedroom 2-Bathroom End Unit Apartment

# Jasmine Court

7200 DAVIS BLVD. NAPLES, FL 33962  
813-774-5457 • 1-800-328-POOL



**"A" TYPE**  
**Living Area ..... 1469**  
**Patio ..... 243**  
**Carport ..... 240**  
**Total ..... 1900**

**INDIVIDUAL ENTRY  
ON ALL 2nd FLOOR  
APARTMENTS**

### EAT-IN KITCHEN

European Cabinets with DuPont Corian Countertops  
Indirect Lighting

### APPLIANCE PACKAGE BY G.E.

Washer and Dryer in Each Unit  
Spacemaker Microwave Oven  
Self-Cleaning 30" Oven/Range  
Garbage Disposal  
Potscrubber Dishwasher  
22 Cubic Foot Refrigerator with Water & Ice in Door

### BATHROOMS

European Cabinets  
Cultured Marble Vanity Tops  
Full-width Mirrors above Vanity  
Mirrored Medicine Cabinets

### MASTER BATH

Large Shower with Enclosure  
Twin Sinks

### FLOOR COVERINGS

Ceramic Tile in Kitchen, Foyer, Dining, Laundry Room, Both Baths  
Upgraded Carpeting  
Your Choice of Carpet Colors

### PARKING & CARPORTS

Masonry Constructed Carport  
Carports with Individual Secured Storage  
Brick Parking Lots and Walkways

### BUILDING FEATURES

Vaulted Ceilings in Upper Units  
9' Ceilings in Lower Units with 8' Sliding Glass Doors  
Barrel Tile Roofs on All Units and Carports  
Gutters on All Units and Carports

### ENERGY SAVING FEATURES

Energy Efficient Central Heat and Air Conditioning  
Quick Recovery Hot Water Heater  
Water Pipes Wrapped with Sound-Resistant Insulation  
R-30 Value Insulation in Attic  
Insulation Between All Units

### ADDITIONAL STANDARD FEATURES

Spacious Walk-in Closet with Air Conditioning and Extra Shelving  
Large Laundry Room  
Tempered Sliding Glass Doors  
8 Ceiling Fan Outlets  
Private Stairways  
2 Large Screened & Covered Lanais  
2 Smoke Detectors

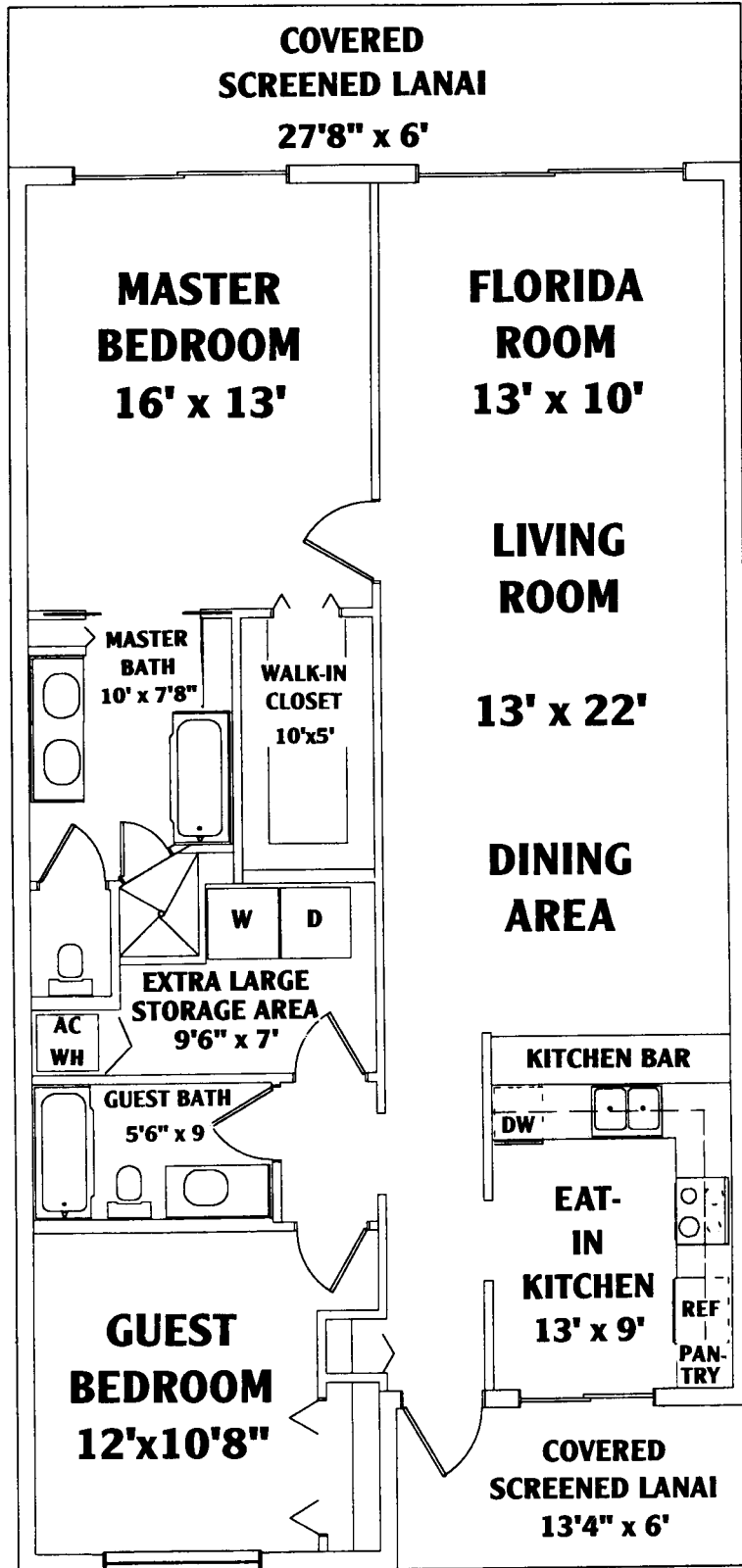
**5,000 SQ. FT. AIR-CONDITIONED CLUBHOUSE  
WITH KITCHEN AND DANCE FLOOR**

**LARGEST SWIMMING POOL IN SOUTHWEST FLORIDA  
(Approximately 11,200 Sq. Ft. of Water)**

## 2-Bedroom 2-Bathroom Interior Unit Apartment

# Rose Wood

7200 DAVIS BLVD. NAPLES, FL 33962  
813-774-5457 • 1-800-328-POOL



Living Area ..... 1349  
Patio ..... 247  
Carpport ..... 240  
**Total ..... 1836**

INDIVIDUAL ENTRY  
ON ALL 2ND FLOOR  
APARTMENTS

### EAT-IN KITCHEN

European Cabinets with DuPont Corian Countertops  
G.E. Appliance Package  
Potscrubber Dishwasher  
Spacemaker Microwave Oven  
Self-Cleaning 30" Oven/Range  
Garbage Disposal  
Potscrubber Dishwasher  
22 Cubic Foot Refrigerator with Water & Ice In Door  
Indirect Lighting

### BATHROOMS

Cultured Marble Vanity Tops  
Full-width Mirrors above Vanity

### MASTER BATH

Tiled Shower  
Linen Closet  
Twin Sinks and Full-Sized Tub

### FLOOR COVERINGS

Ceramic Tile in Kitchen, Foyer, Dining, Laundry Room, Both Baths  
Carpet and Padding Throughout

### STRUCTURE

9' Ceilings on 1st Floor with 8' Sliding Glass Doors  
Vaulted Ceilings on 2nd Floor

### ADDITIONAL STANDARD FEATURES

Spacious Walk-in Closet with Air Conditioning and Extra Shelving  
Washer and Dryer in Each Unit  
Large Laundry Room  
Quick-recovery Hot-Water Heater  
R-30 Value Insulation in Attic  
Insulation Between Units  
Energy-Efficient Central Heat and Air Conditioning  
Carpports with Individual Secured Storage  
Fully Screened Patios in Each Unit  
Water Pipes Wrapped with Sound-Resistant Insulation  
Masonry Constructed Carpports  
Barrel Tile Roofs on All Units and Carpports  
Brick Parking Lots and Walkways  
Gutters on All Units and Carpports  
8 Ceiling Fan Outlets  
Underground Utilities  
2 Smoke Detectors  
Marble Window Sills

### RECREATIONAL FACILITIES

5,000 SQ. FT. AIR-CONDITIONED CLUBHOUSE  
WITH KITCHEN AND DANCE FLOOR

LARGEST SWIMMING POOL IN SOUTHWEST FLORIDA  
(Approximately 11,200 Sq. Ft. of Water)