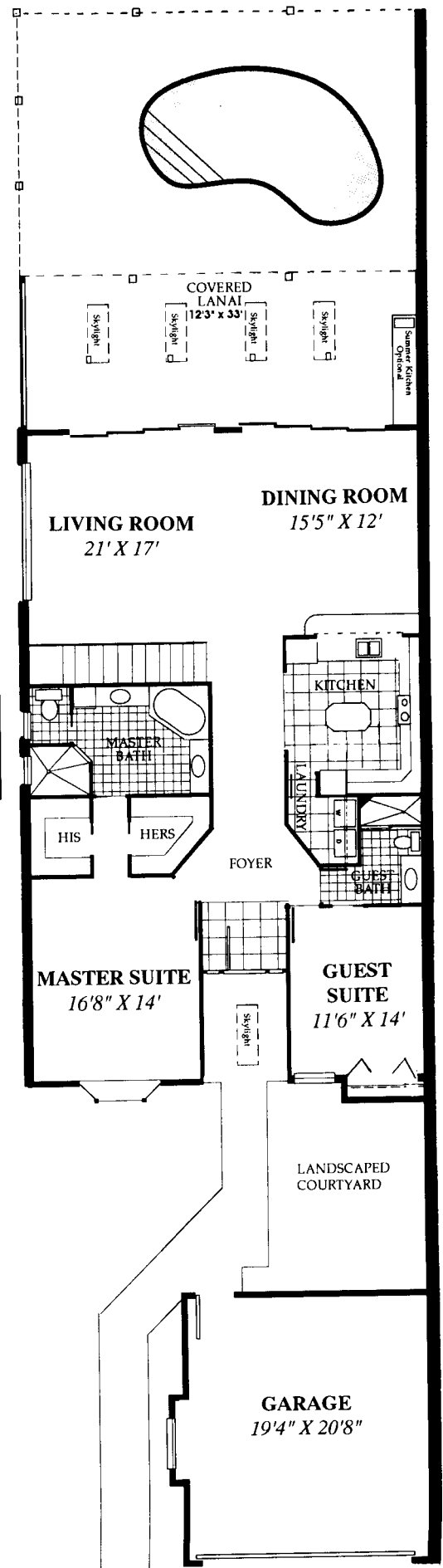
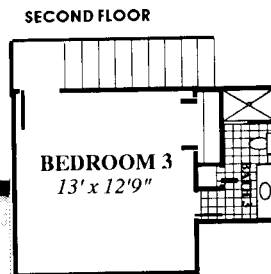


Spoonbill II Golf Villa

Three bedroom, three bath,
with screened pool and double garage

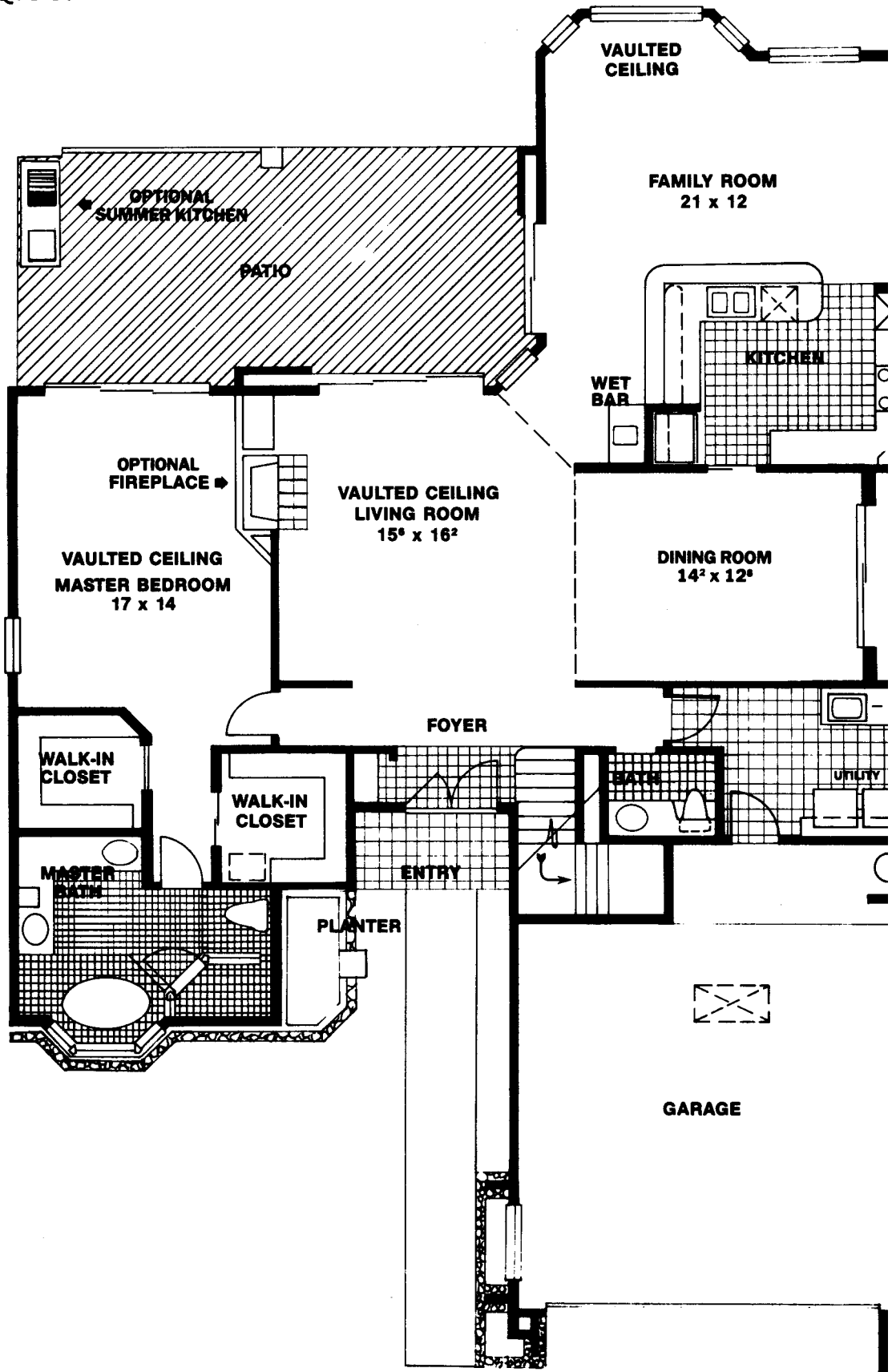
LIVING AREA,	2,065 SQ.FT.
First Floor	1,817 SQ.FT.
Second Floor	248 SQ.FT.
COVERED LANAI.	413 SQ.FT.
ENTRY.	36 SQ.FT.
GARAGE.	427 SQ.FT.
<hr/>	
TOTAL AREA.	2,941 SQ.FT.



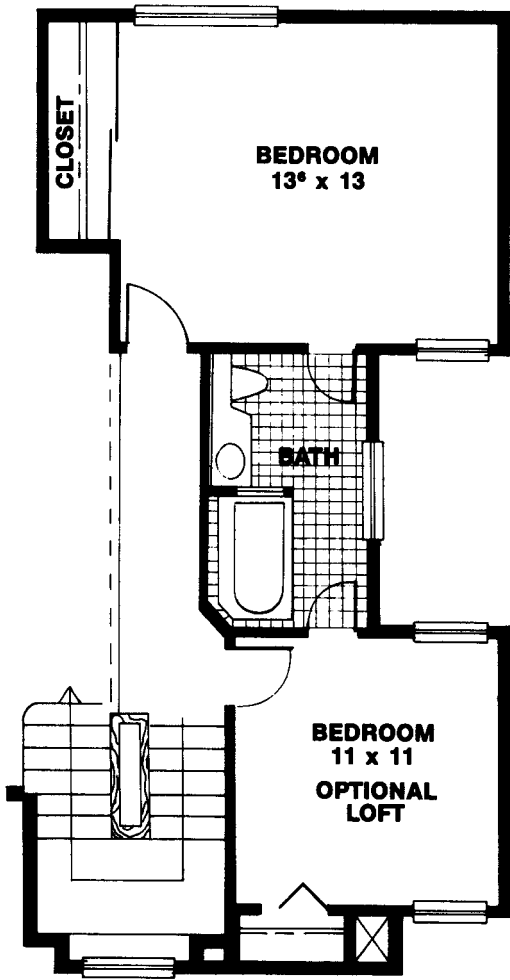
ORAL REPRESENTATIONS CANNOT BE RELIED UPON AS CORRECTLY
STATING THE REPRESENTATIONS OF THE DEVELOPER. FOR CORRECT
REPRESENTATIONS, MAKE REFERENCE TO THE HOMEOWNERS
ASSOCIATION DOCUMENTS FURNISHED BY THE DEVELOPER TO THE BUYER.
ALL REFERENCES TO SQUARE FOOTAGE AND ROOM DIMENSIONS ARE
APPROXIMATE AND SUBJECT TO CHANGE WITHOUT NOTICE.



TWO STORY, TWO BEDROOM/FAMILY ROOM/LOFT, TWO BATH, GARAGE
TOTAL: 2390 SQ. FT.



FIRST FLOOR PLAN



SECOND FLOOR PLAN



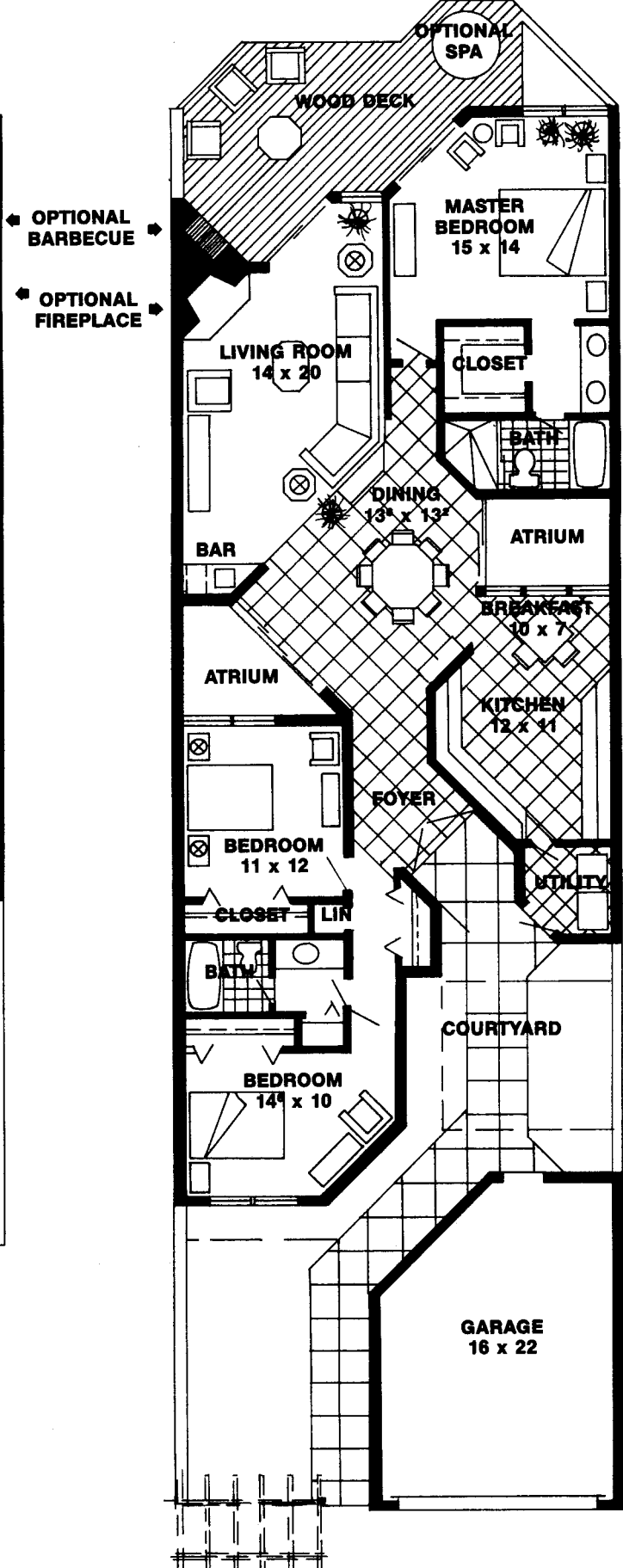
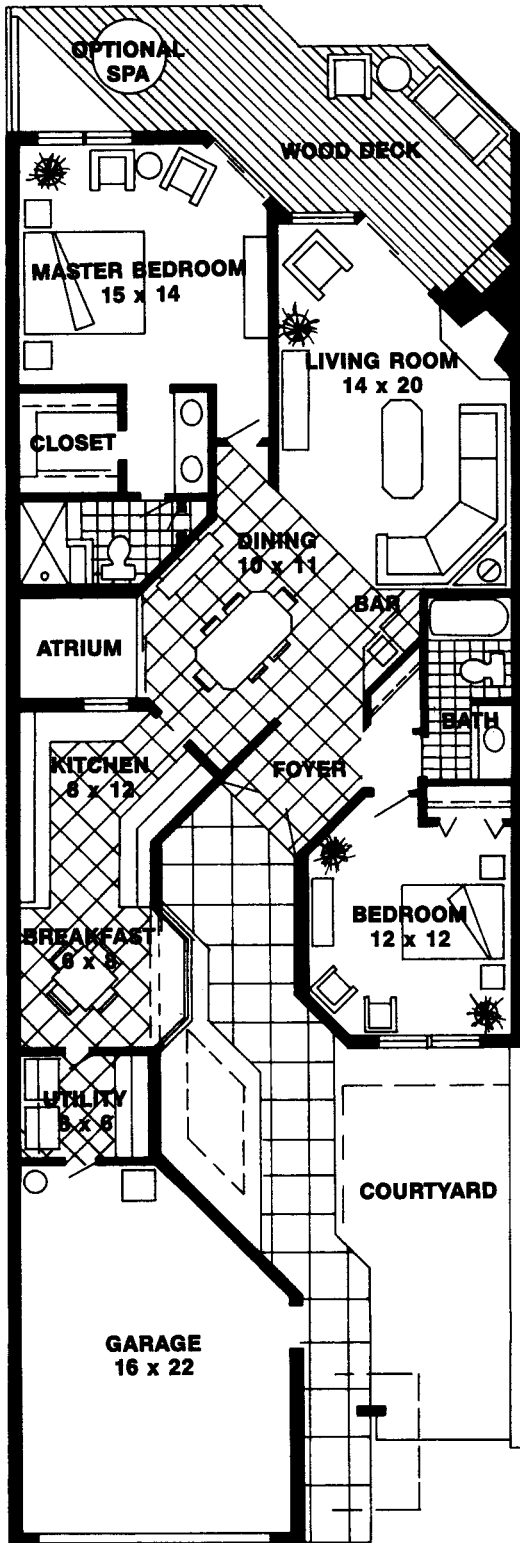
Ibis

TWO BEDROOM
TWO BATH, GARAGE
TOTAL: 1426 SQ. FT.



Gannet

THREE BEDROOM
TWO BATH, GARAGE
TOTAL: 1708 SQ. FT.

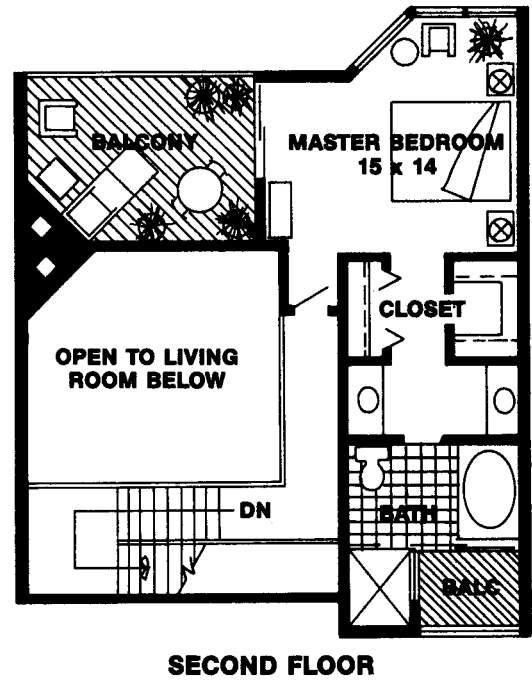
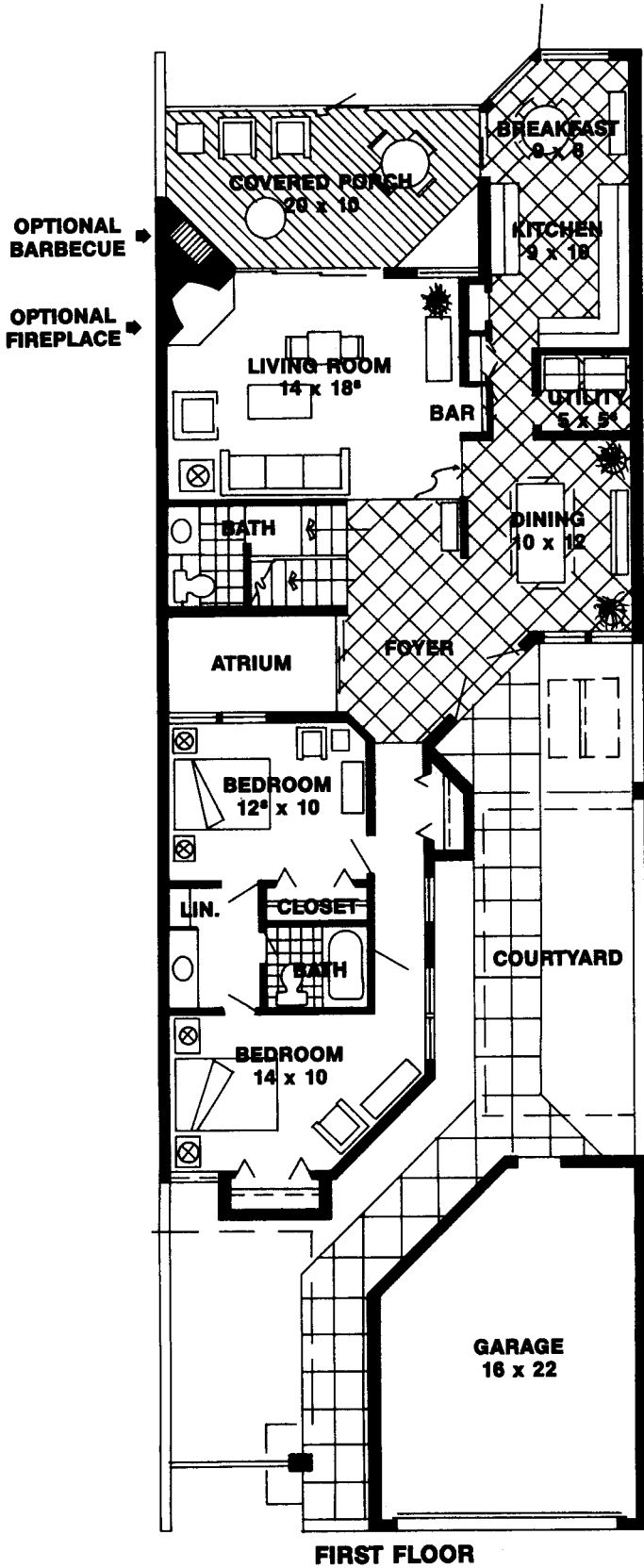




Cormorant

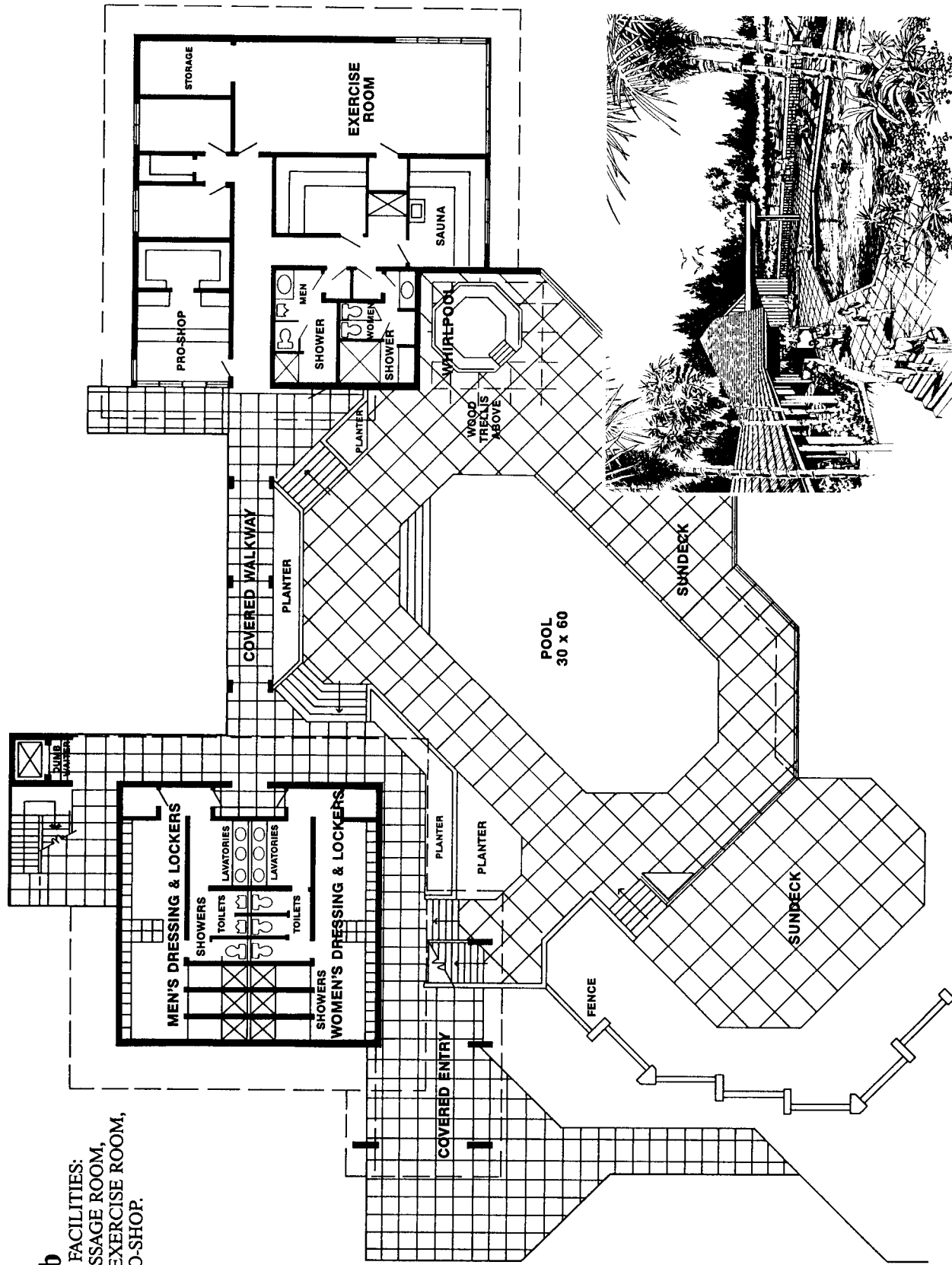
TWO STORY, THREE BEDROOM, TWO AND ONE-HALF BATH, GARAGE

TOTAL: 1893 SQ. FT.



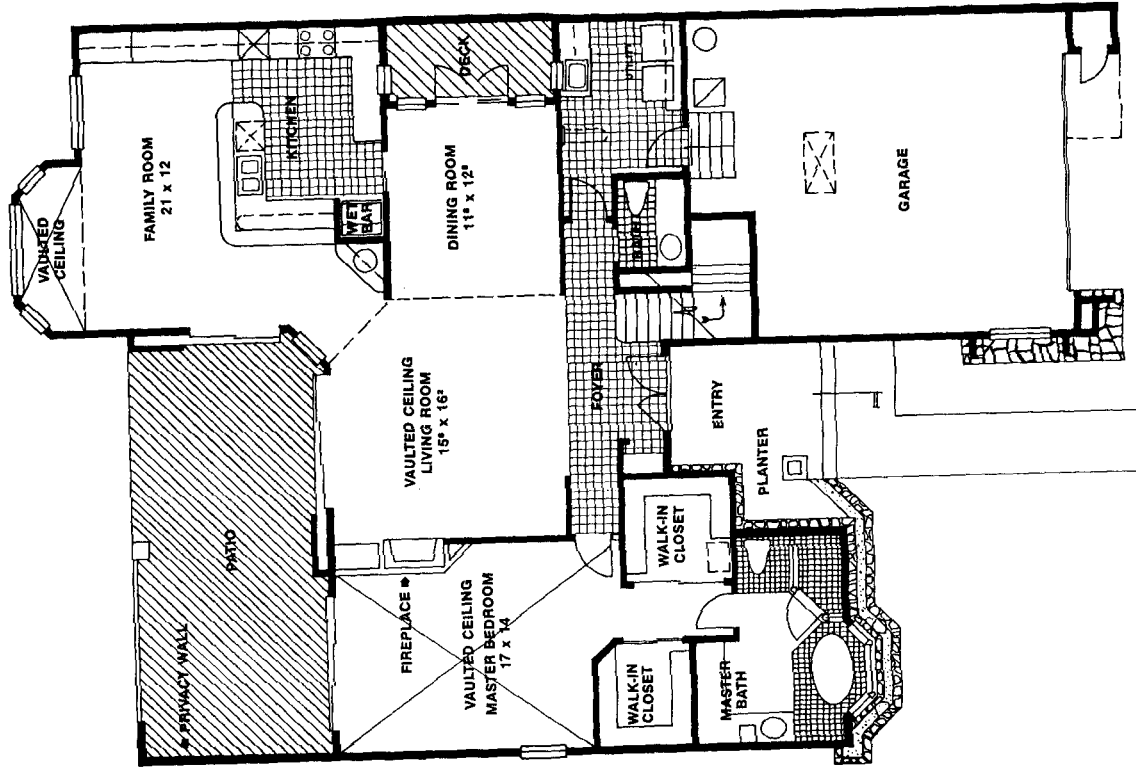
Tennis Club

COMPLETE SPA FACILITIES:
INCLUDING MASSAGE ROOM,
STEAM ROOM, EXERCISE ROOM,
SAUNA AND PRO-SHOP.

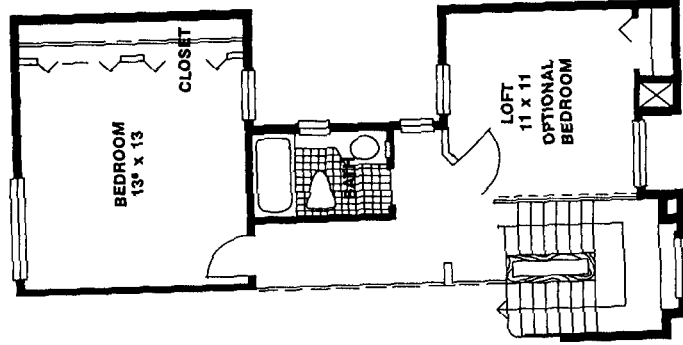




Eagle
TWO STORY, TWO BEDROOM/FAMILY ROOM/LOFT, TWO BATH, GARAGE
TOTAL: 2271 SQ. FT.



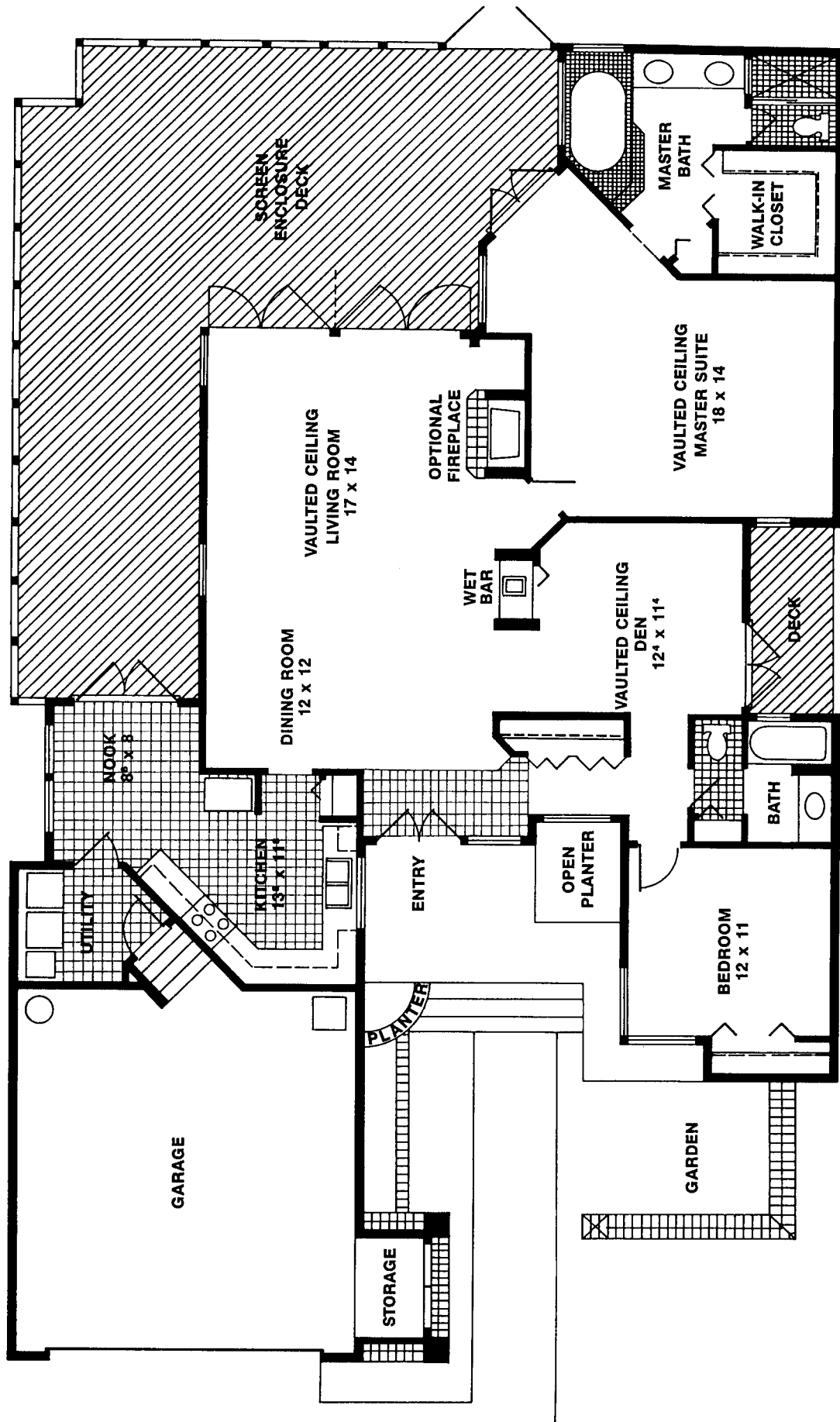
FIRST FLOOR PLAN



SECOND FLOOR

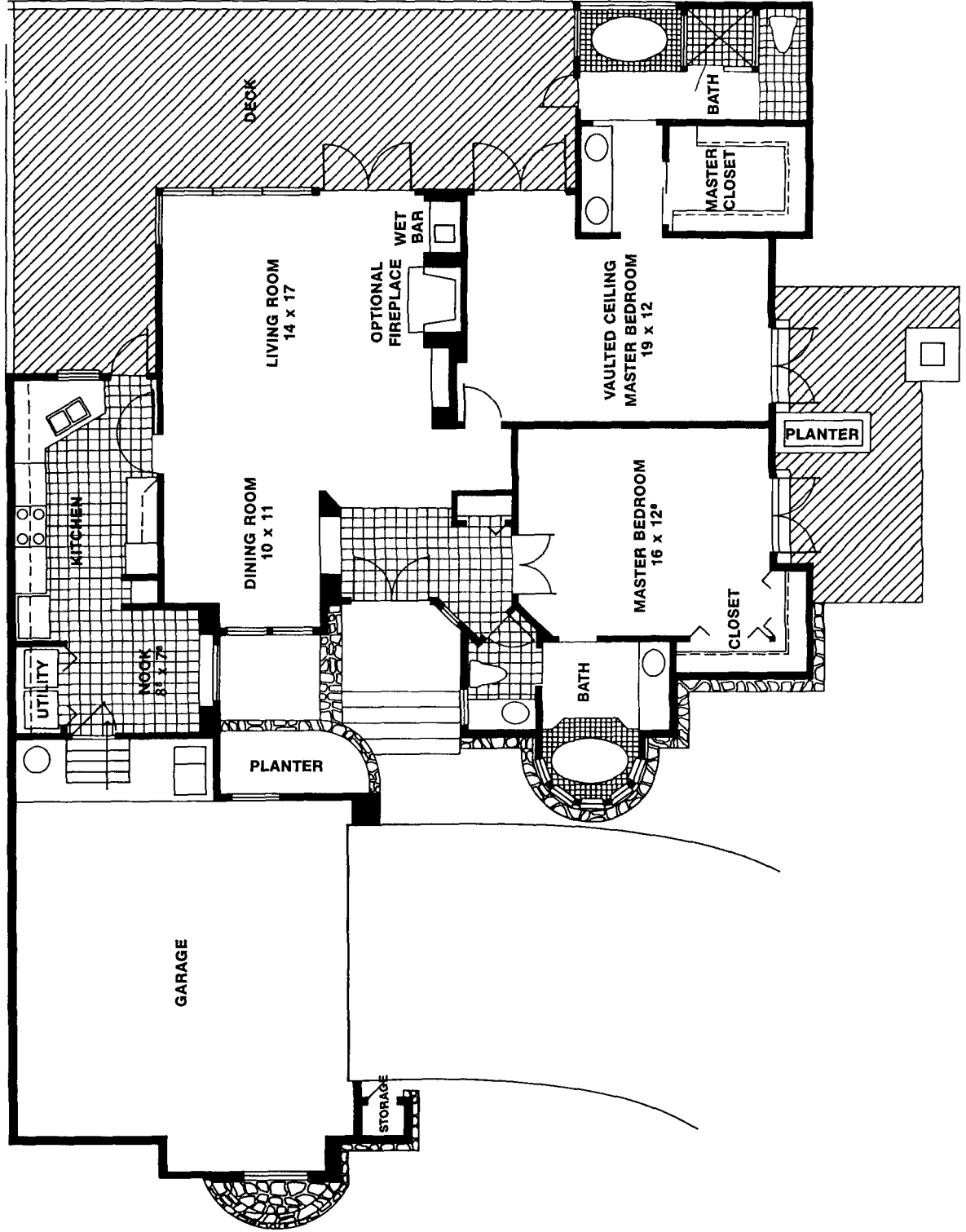


TWO BEDROOMS, TWO BATHS, GARAGE
TOTAL: 1861 SQ. FT.





TWO BEDROOM, TWO BATH, GARAGE
TOTAL: 1542 SQ. FT.

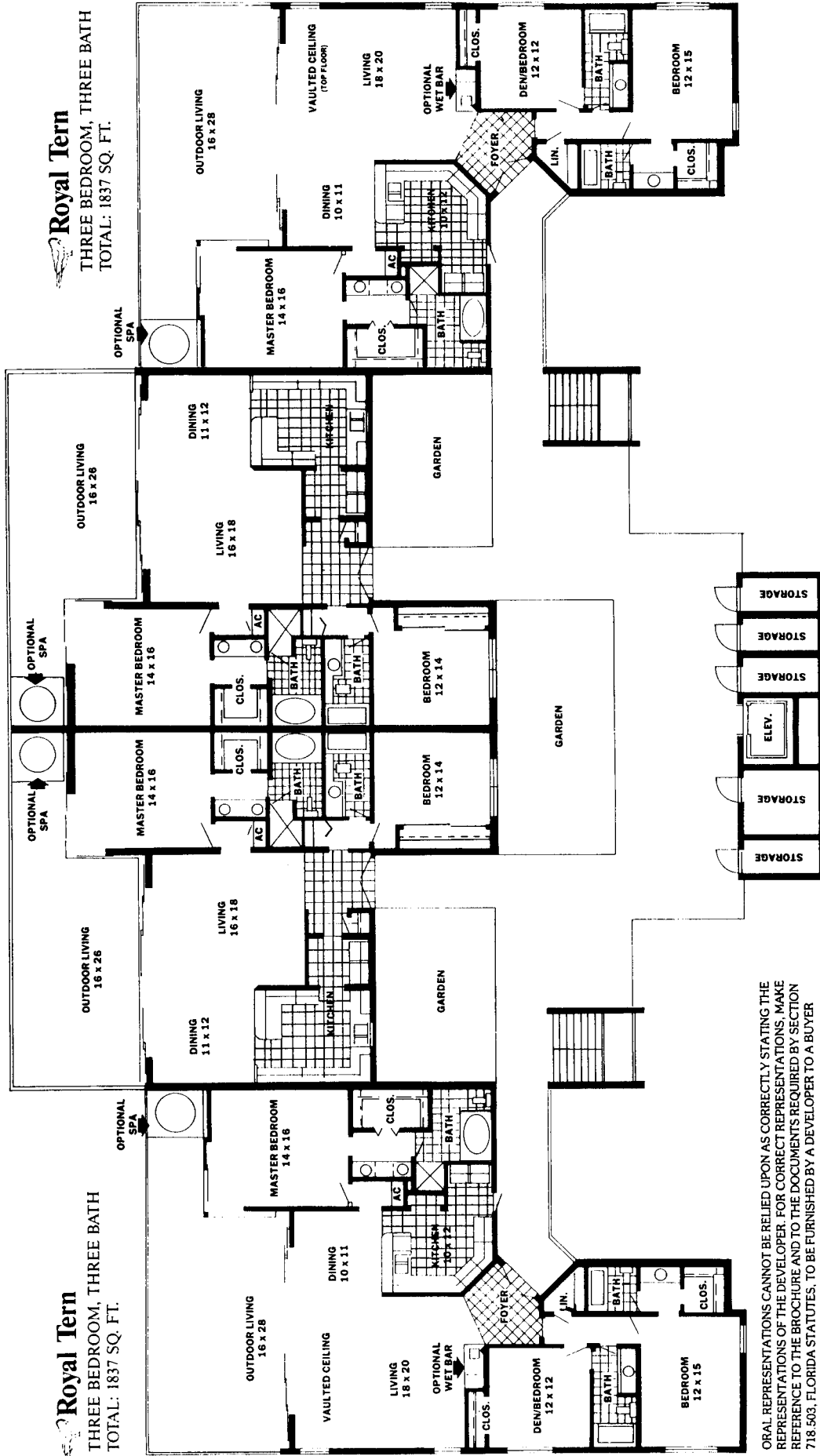


Kittiwake
TWO BEDROOM, TWO BATH
TOTAL: 1484 SQ. FT.

Kittiwake
TWO BEDROOM, TWO BATH
TOTAL: 1484 SQ. FT.

Royal Tern
THREE BEDROOM, THREE BATH
TOTAL: 1837 SQ. FT.

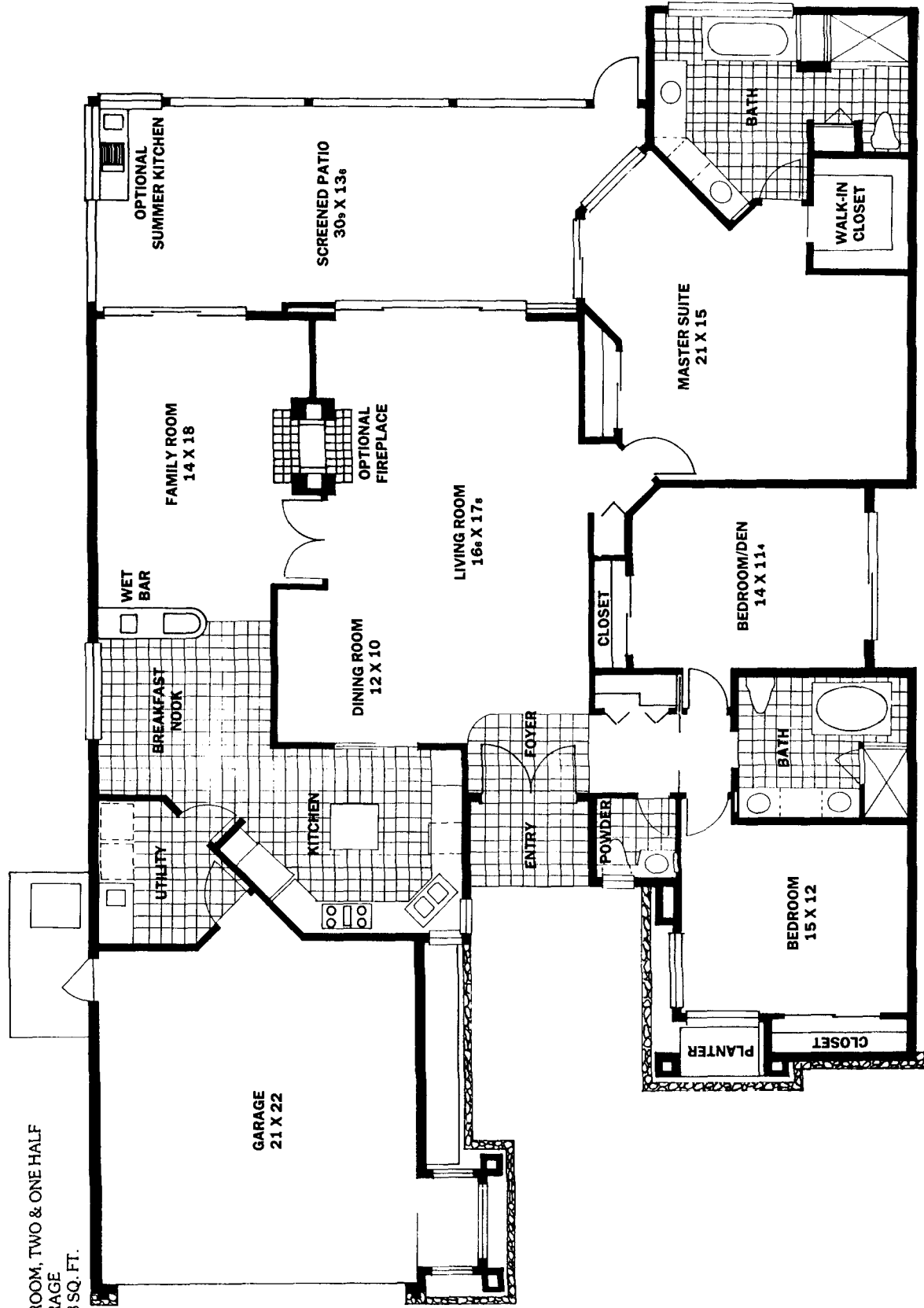
Royal Tern
THREE BEDROOM, THREE BATH
TOTAL: 1837 SQ. FT.



ORAL REPRESENTATIONS CANNOT BE RELIED UPON AS CORRECTLY STATING THE REPRESENTATIONS OF THE DEVELOPER. FOR CORRECT REPRESENTATIONS, MAKE REFERENCE TO THE BROCHURE AND TO THE DOCUMENTS REQUIRED BY SECTION 718.503, FLORIDA STATUTES, TO BE FURNISHED BY A DEVELOPER TO A BUYER OR LESSEE.

ALL REFERENCES TO SQUARE FOOTAGE AND ROOM DIMENSIONS ARE APPROXIMATE AND SUBJECT TO CHANGE.

Egret
 THREE BEDROOM, TWO & ONE HALF
 BATHS, GARAGE
 TOTAL: 2388 SQ. FT.



ORAL REPRESENTATIONS CANNOT BE RELIED UPON AS CORRECTLY STATING THE REPRESENTATIONS OF THE DEVELOPER. FOR CORRECT REPRESENTATIONS, MAKE REFERENCE TO THE BROCHURE AND TO THE DOCUMENTS REQUIRED BY SECTION 718.503, FLORIDA STATUTES, TO BE FURNISHED BY A DEVELOPER TO A BUYER OR LESSEE.

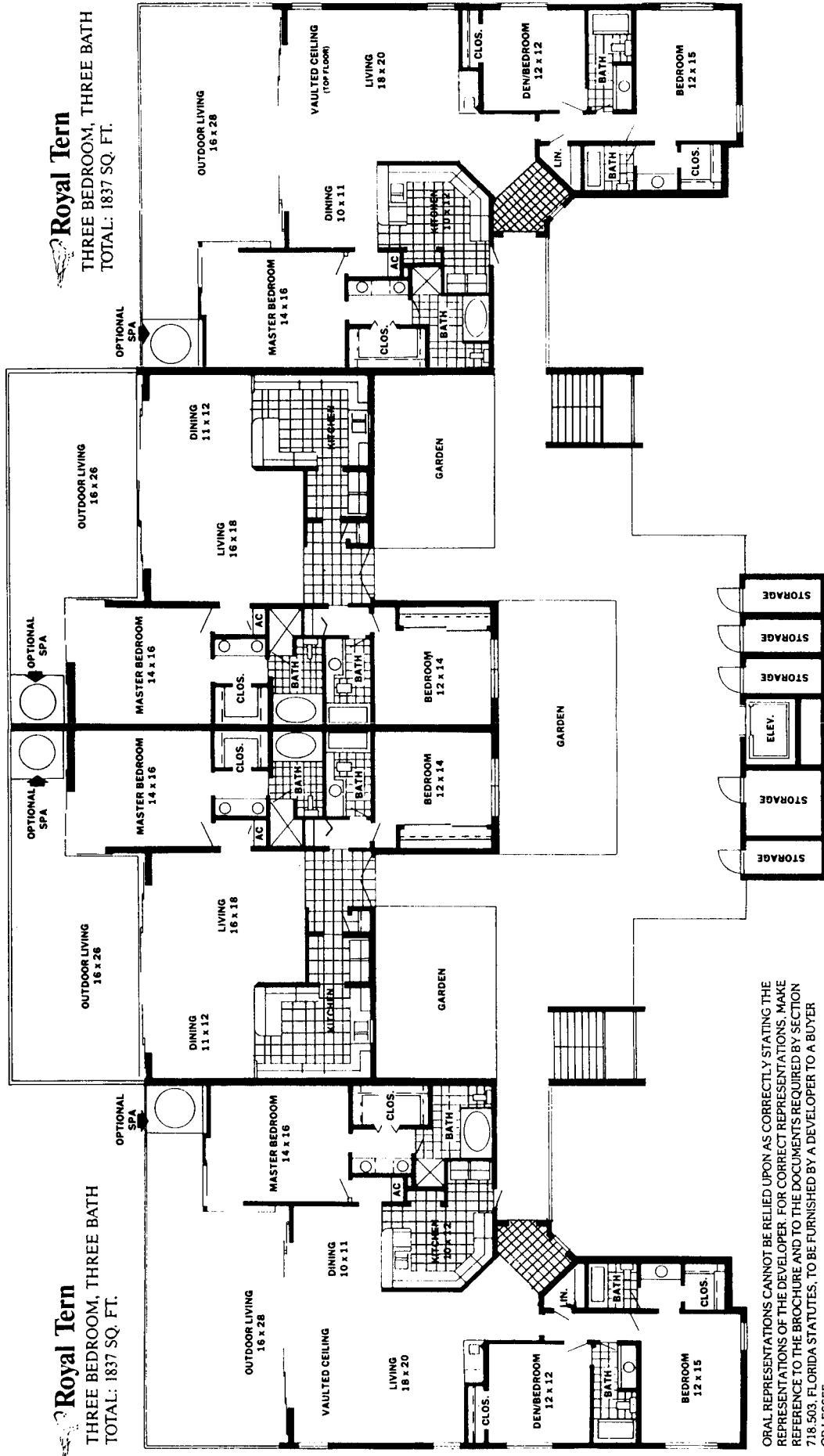
ALL REFERENCES TO SQUARE FOOTAGE AND ROOM DIMENSIONS ARE APPROXIMATE AND SUBJECT TO CHANGE.

Kittiwake
TWO BEDROOM, TWO BATH
TOTAL: 1484 SQ. FT.

Kittiwake
TWO BEDROOM, TWO BATH
TOTAL: 1484 SQ. FT.

Royal Tern
THREE BEDROOM, THREE BATH
TOTAL: 1837 SQ. FT.

Royal Tern
THREE BEDROOM, THREE BATH
TOTAL: 1837 SQ. FT.



ORAL REPRESENTATIONS CANNOT BE RELIED UPON AS CORRECTLY STATING THE REPRESENTATIONS OF THE DEVELOPER. FOR CORRECT REPRESENTATIONS, MAKE REFERENCE TO THE BROCHURE AND TO THE DOCUMENTS REQUIRED BY SECTION 718.503, FLORIDA STATUTES, TO BE FURNISHED BY A DEVELOPER TO A BUYER OR LESSEE.

ALL REFERENCES TO SQUARE FOOTAGE AND ROOM DIMENSIONS ARE APPROXIMATE AND SUBJECT TO CHANGE.