

The Tiena

4 Bedrooms, 3 Baths, Gourmet Kitchen



The Mediterranean



The Renaissance



The Provincial



The Tuscan

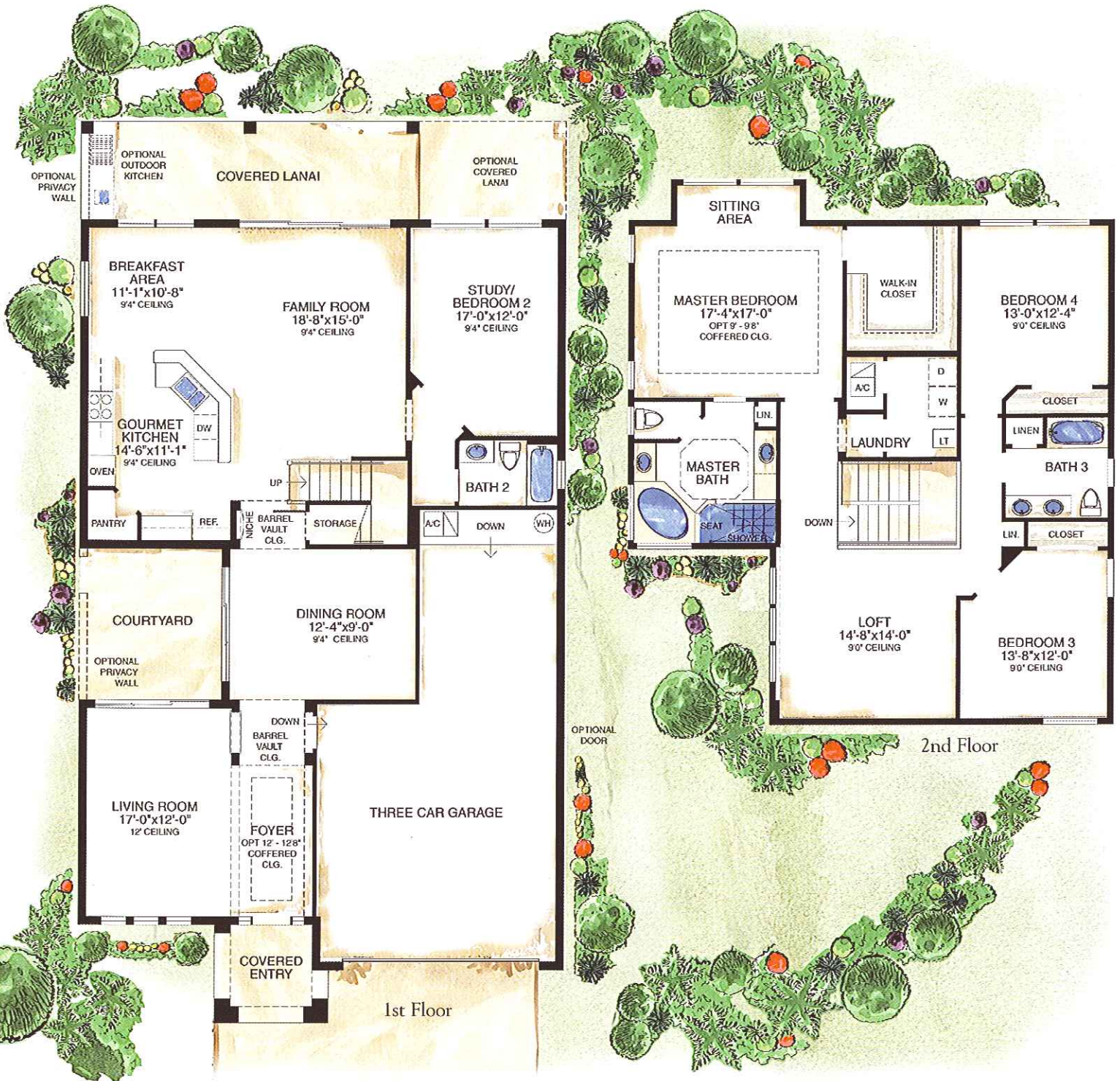
Toll Brothers

America's Luxury Home Builder™

Illustration is Artist's Conception



The Tiena



THE TIENA	
1 ST FLOOR LIVING AREA	... 1,587 SQ. FT.
2 ND FLOOR LIVING AREA	... 1,437 SQ. FT.
TOTAL A/C LIVING AREA	.. 3,024 SQ. FT.
COVERED LANAI 221 SQ. FT.
COVERED ENTRY 70 SQ. FT.
GARAGE 625 SQ. FT.
TOTAL AREA 3,940 SQ. FT.

For more information visit tollbrothers.com

All room dimensions are approximate, shown to the maximum dimensions of each room, and are subject to field variation. Dimensions should not be used to calculate room square footage. Some windows and floorplans may vary with elevation. Some features may vary from community to community. Please consult a Sales Manager for details. Options purchased must be specified in exhibit B. The floorplans and elevations of Toll Brothers homes are copyrighted. We have enforced and will continue to enforce our federal copyrights to protect the investment of our homebuyers. Actual landscaping may vary from artist's rendering.