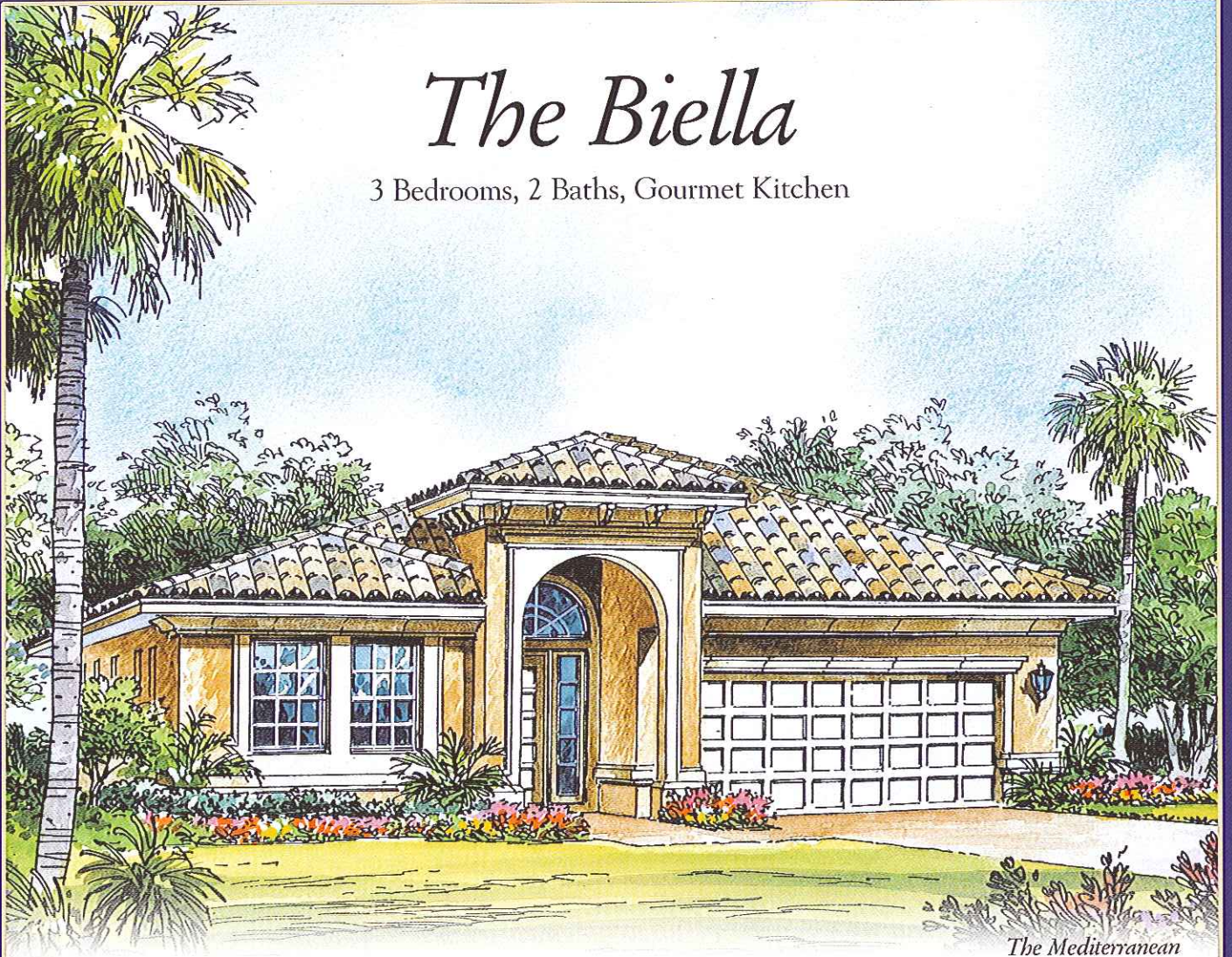


The Biella

3 Bedrooms, 2 Baths, Gourmet Kitchen



The Mediterranean



The Renaissance



The Provincial



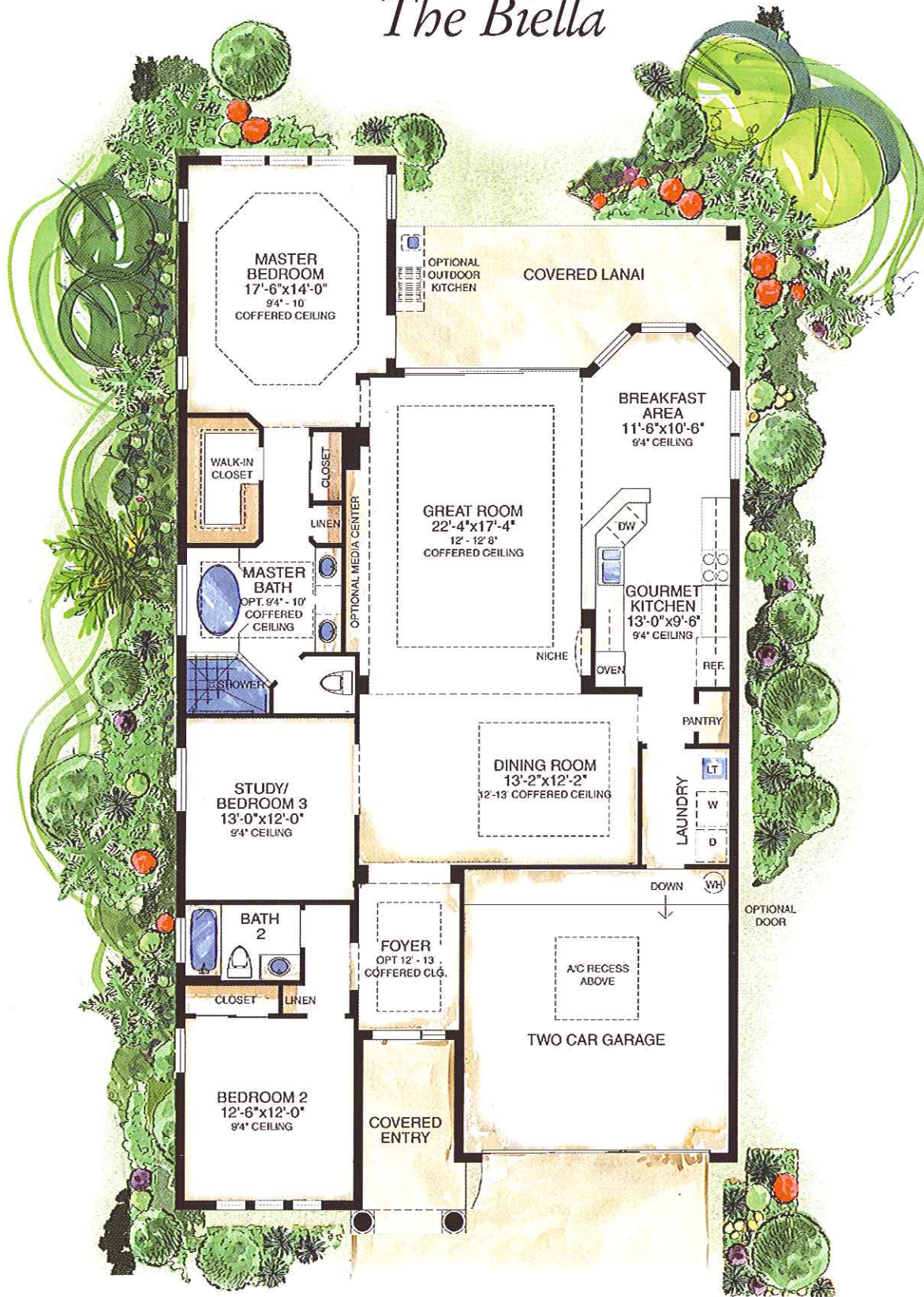
The Tuscan

Toll Brothers
America's Luxury Home Builder™

Illustration is Artist's Conception



The Biella



For more information visit tollbrothers.com

All room dimensions are approximate, shown to the maximum dimensions of each room, and are subject to field variation. Dimensions should not be used to calculate room square footage. Some windows and floorplans may vary with elevation. Some features may vary from community to community. Please consult a Sales Manager for details. Options purchased must be specified in exhibit B. The floorplans and elevations of Toll Brothers homes are copyrighted. We have enforced and will continue to enforce our federal copyrights to protect the investment of our homebuyers. Actual landscaping may vary from artist's rendering.

| | |
|--------------------------|----------------------|
| THE BIELLA | |
| TOTAL A/C LIVING AREA .. | 2,058 SQ. FT. |
| COVERED LANAI | 219 SQ. FT. |
| COVERED ENTRY | 19 SQ. FT. |
| GARAGE | 405 SQ. FT. |
| TOTAL AREA | 2,777 SQ. FT. |