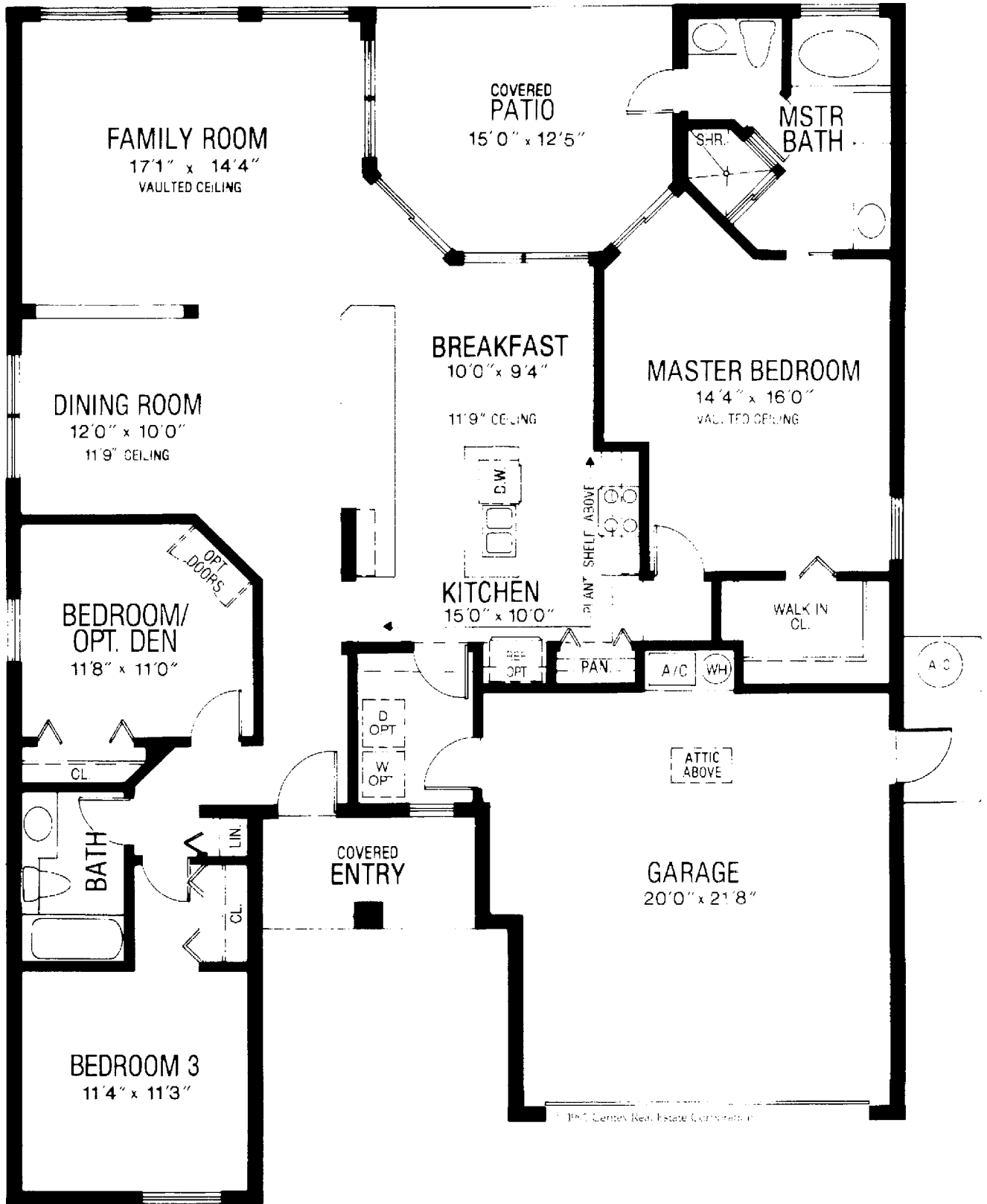


SUBDIVISION	P. B. NO.	NO.	SUBDIVISION	P. B. NO.	NO.	SUBDIVISION	P. B. NO.	ASSESSMENT MAP	SECTION
LAKES UNIT 1	14	118-120	5 BERKSHIRE LAKES UNIT 7	21	EP-65			COLLIER COUNTY, FLORIDA	TOWNSHIP
LAKES UNIT 2	15	42-43						COMPILED & DRAWN FOR	RANGE
LAKES UNIT J	16	15-17						<b>ABE SKINNER</b>	DRAWN BY, DATE
LAKES UNIT B	17	34-37						PROPERTY APPRAISER	UPDATE - BY, DAT
LAKES UNIT 5	19	16-18						NAPLES, FLORIDA	12/1/91

# BENTLEY

3 Bedrooms, or 2 Bedrooms plus Den,  
Family Room, Dining Room, 2 Bathrooms, 2 Car Garage

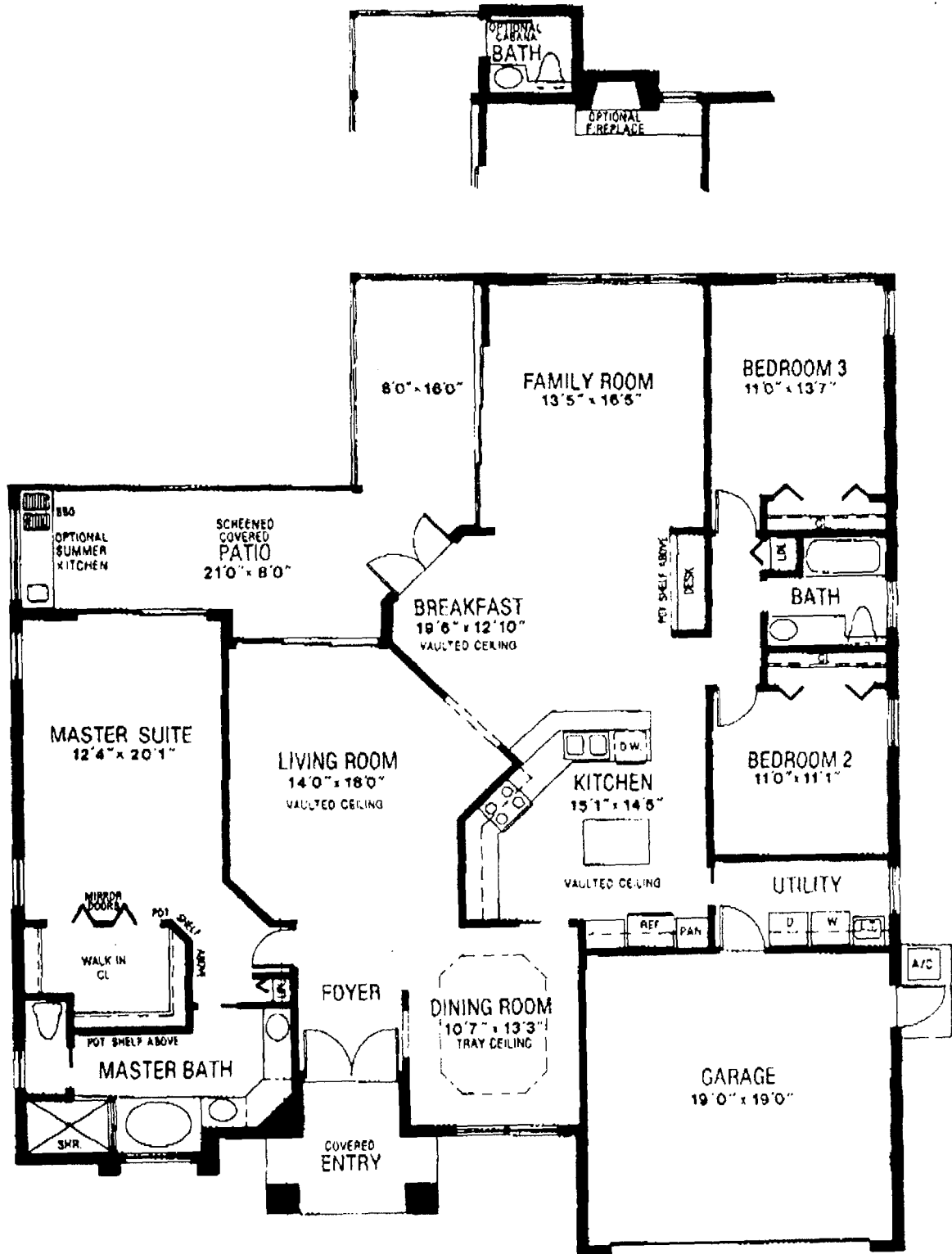
HOUSES BY  
**CENTEX**  
Built On Excellence



# DOVER

3 Bedrooms, 2 Bathrooms, Living Room,  
Family Room, Dining Room, 2 Car Garage

HOMES BY  
**CENTRE**  
Built On Excellence

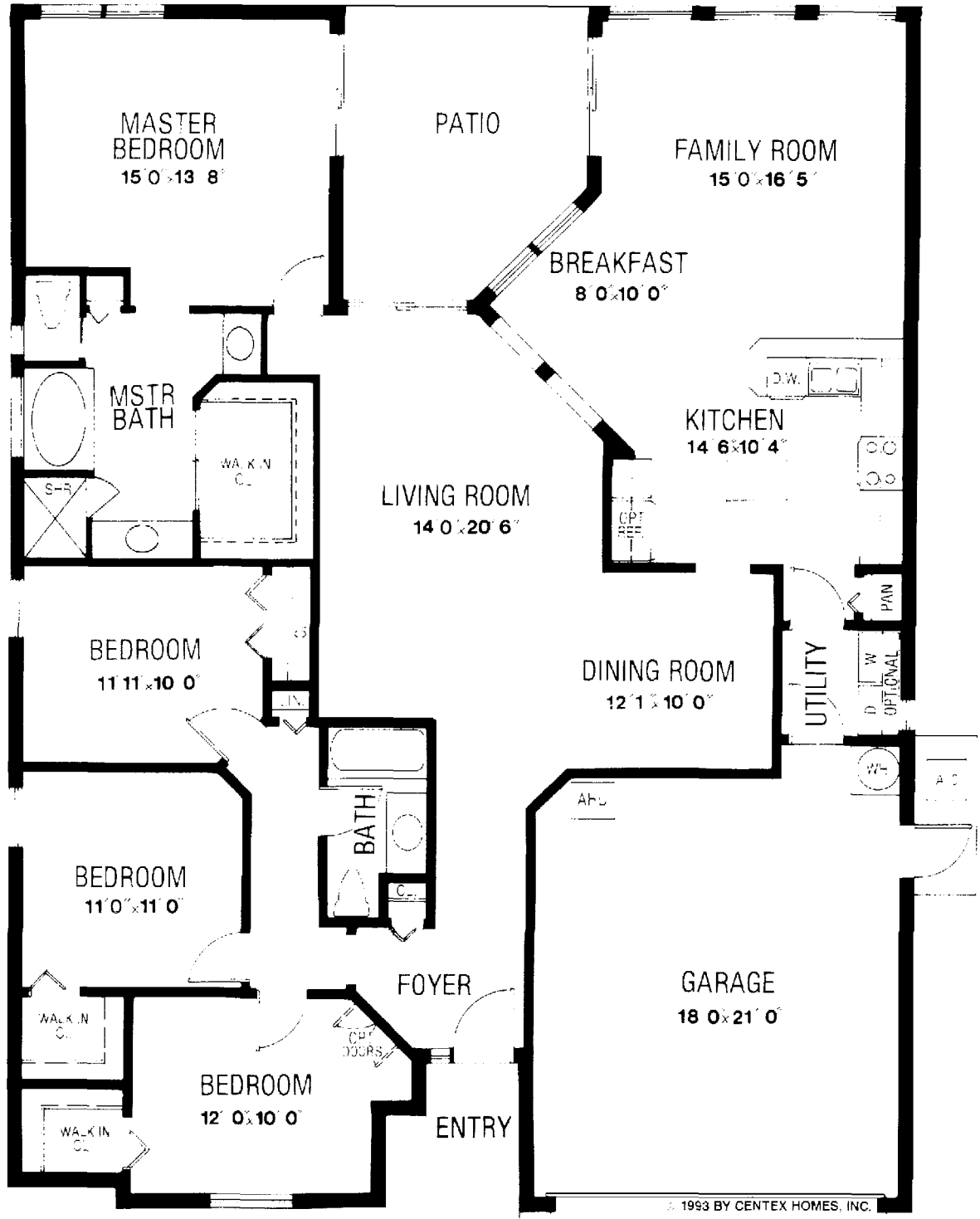


All plans, dimensions, and information are approximate and are subject to change without notice.

# CHESTERFIELD

4 Bedrooms, Family Room, Living Room,  
Dining Room, 2 Bathrooms, 2 Car Garage

HOUSES BY  
**CENTEX**  
Built On Excellence

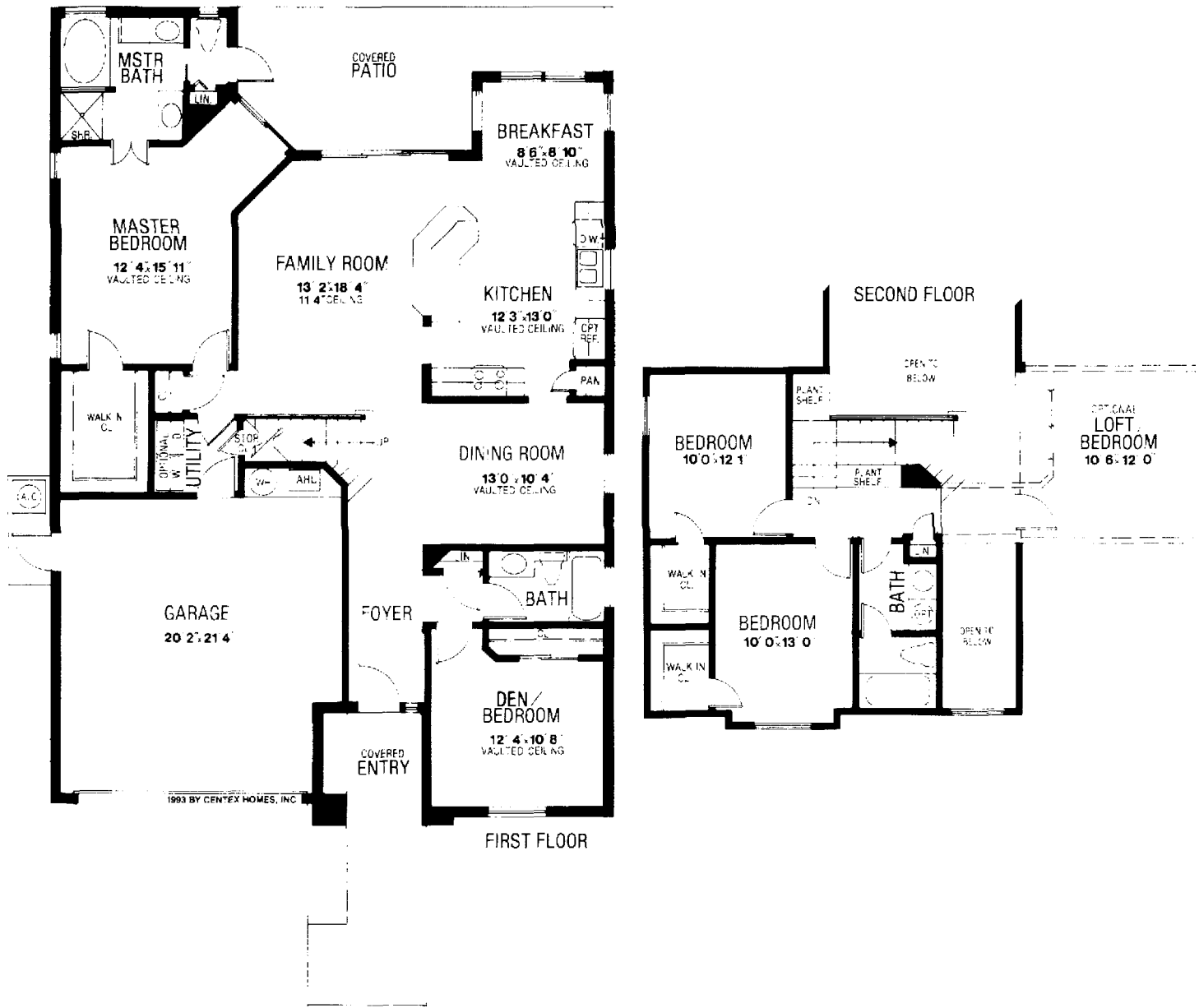


All plans, dimensions, and information are approximate and are subject to change without notice. Developer reserves the right to modify site plan, amenities and future product.

# RICHLAND II

4 Bedrooms or 3 Bedrooms, plus Den  
with optional additional Bedroom,  
Family Room, Dining Room,  
3 Bathrooms, 2 Car Garage

HOMES BY  
**CENTEX**  
Built On Excellence

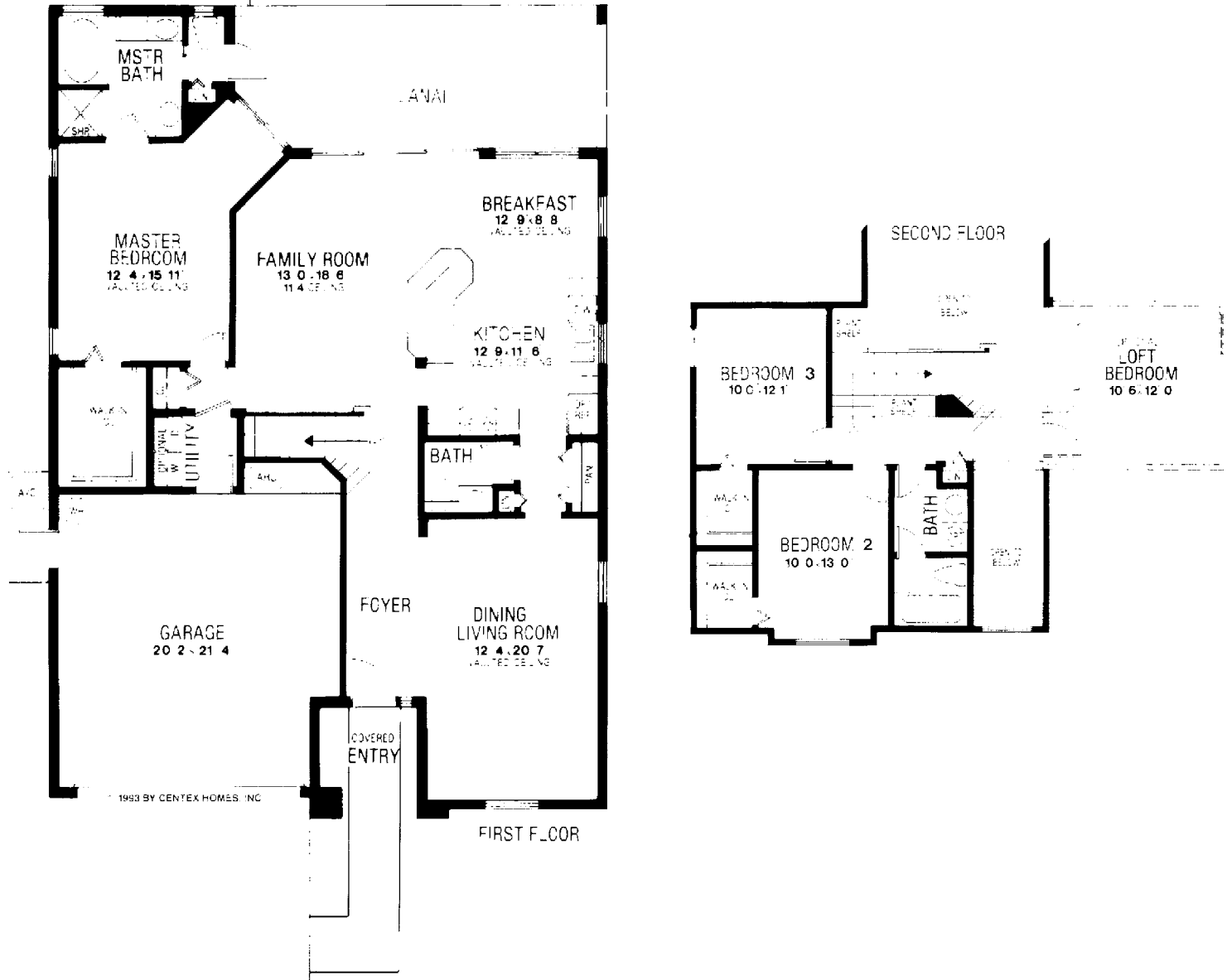


1993 BY CENTEX HOMES, INC.

All plans, dimensions, and information are approximate and are subject to change without notice. Developer reserves the right to modify site plan, amenities and future product.

# RICHLAND

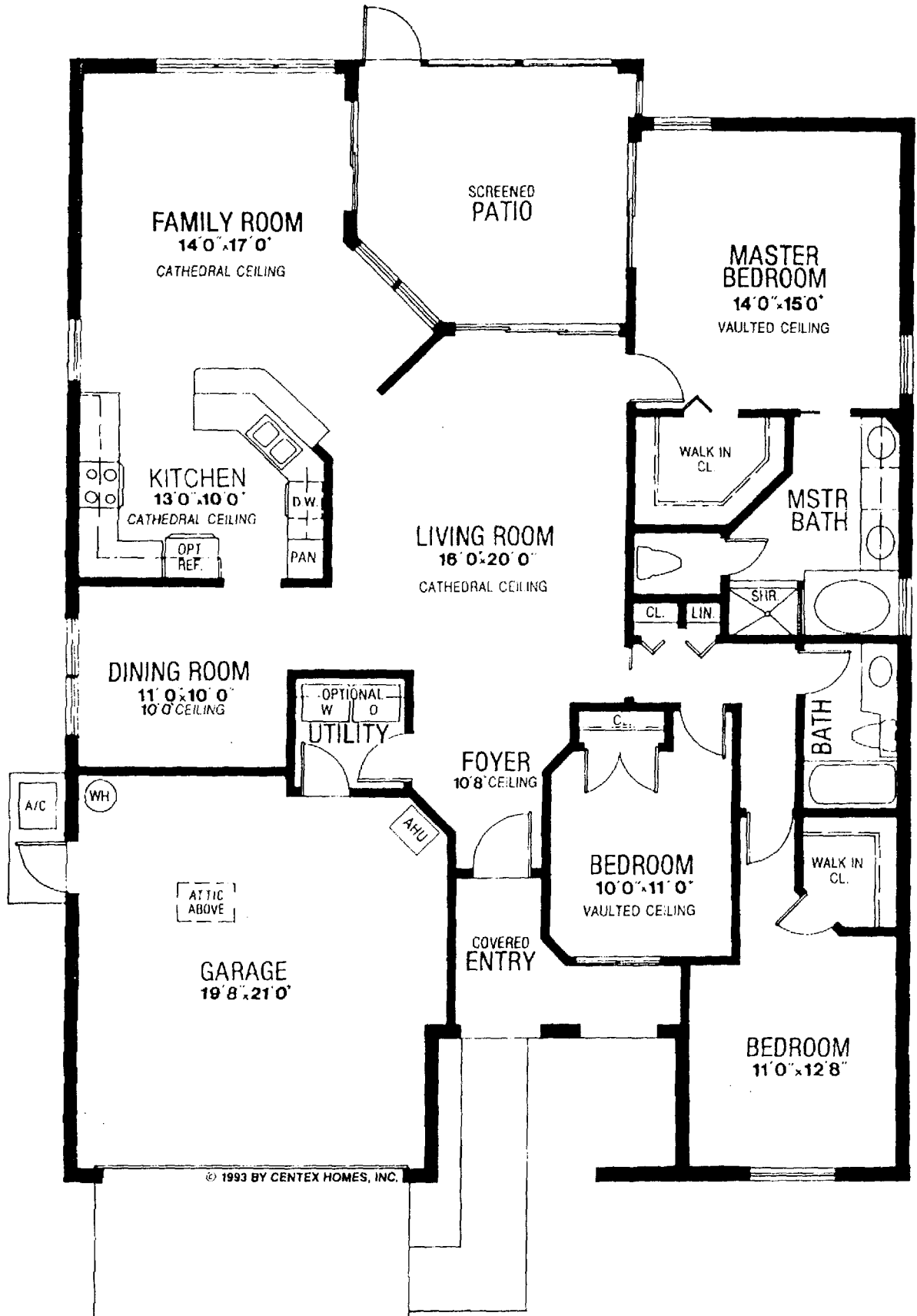
3 Bedrooms with optional 4th Bedroom,  
Living/Dining Room, Family Room,  
3 Bathrooms, 2 Car Garage



# SOUTH PORT

3 Bedrooms, Family Room, Living Room,  
Dining Room, 2 Bathrooms, 2 Car Garage

HOMES BY  
**CENTEX**  
Built On Excellence

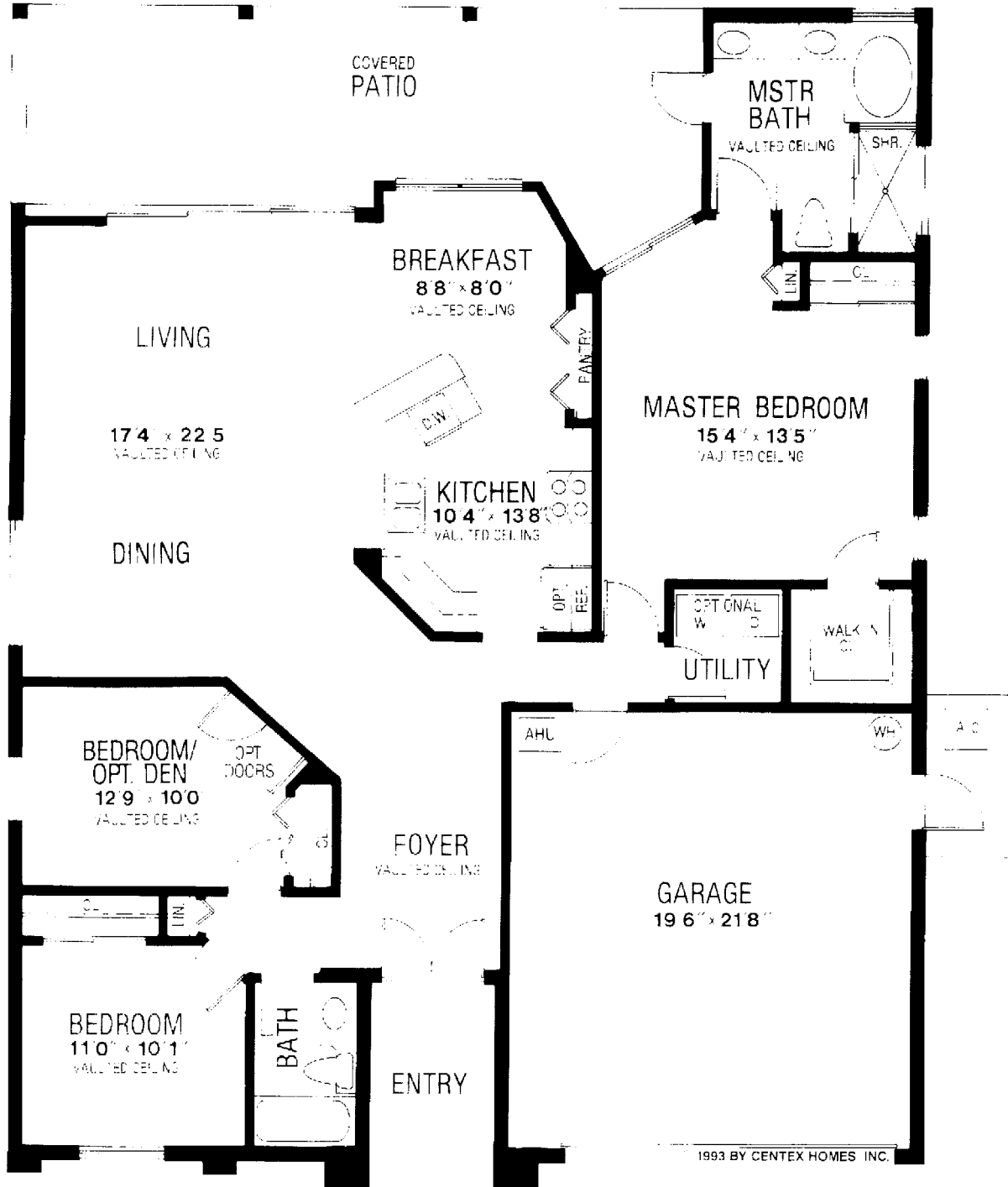


© 1993 BY CENTEX HOMES, INC.

All plans, dimensions, and information are approximate and are subject to change without notice. Developer reserves the right to

# SUMTER

3 Bedrooms, or 2 Bedrooms plus Den, Living Room,  
Dining Room, 2 Bathrooms, 2 Car Garage

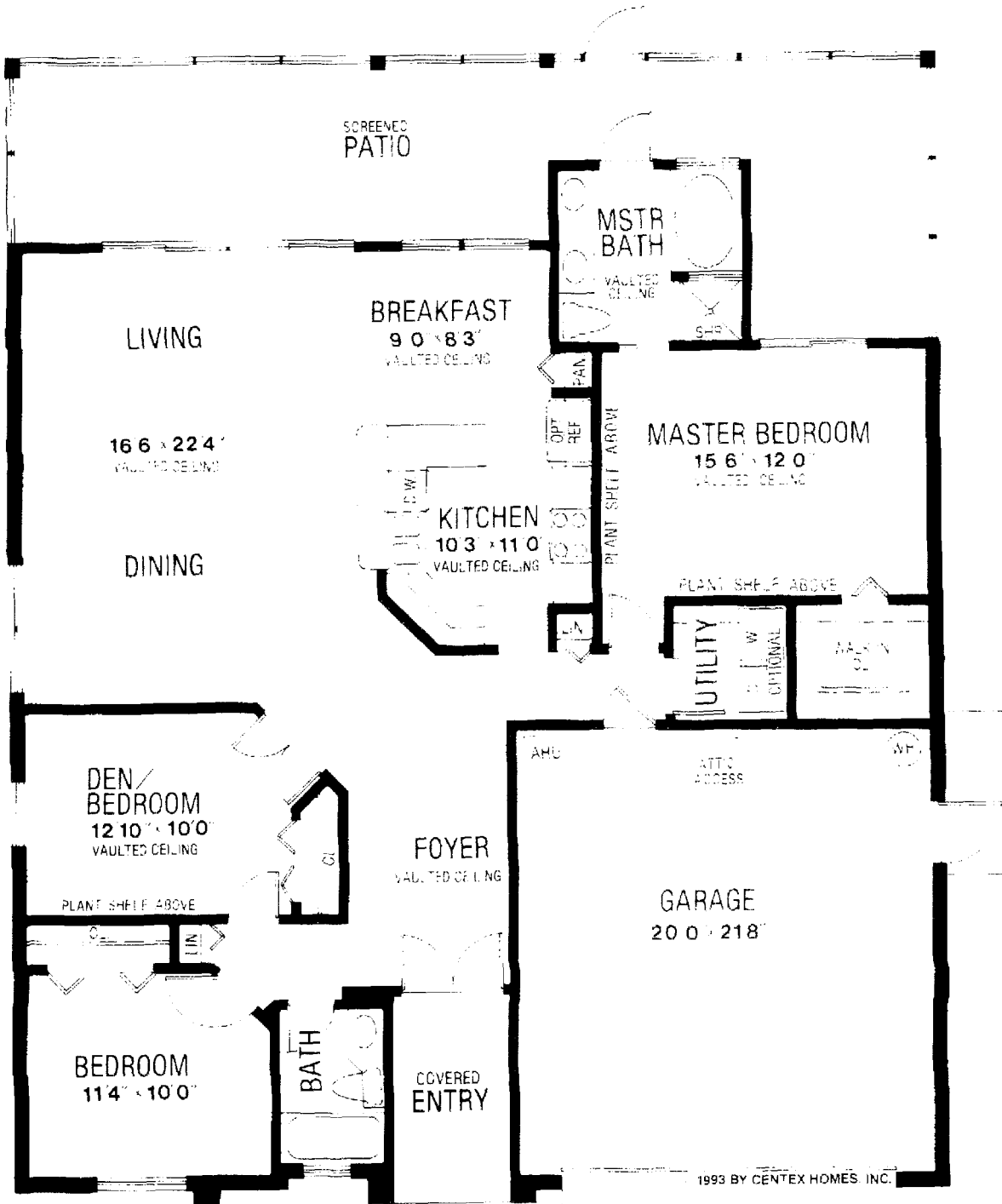




# ASHWOOD

3 Bedrooms or 2 Bedrooms plus Den,  
Living Room, Dining Room,  
2 Bathrooms, 2 Car Garage

HOMES BY  
**CENTEX**  
Built On Excellence

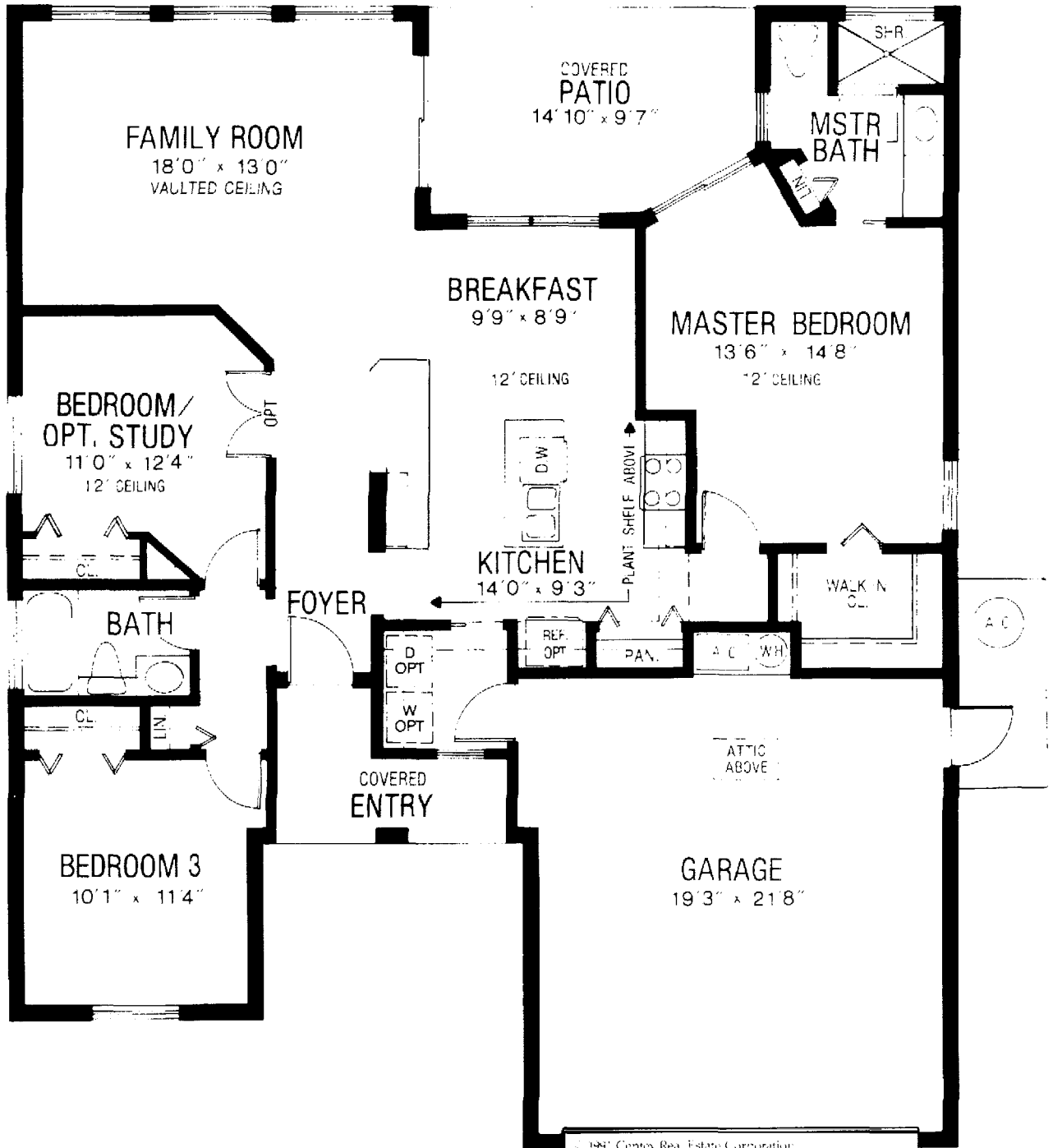


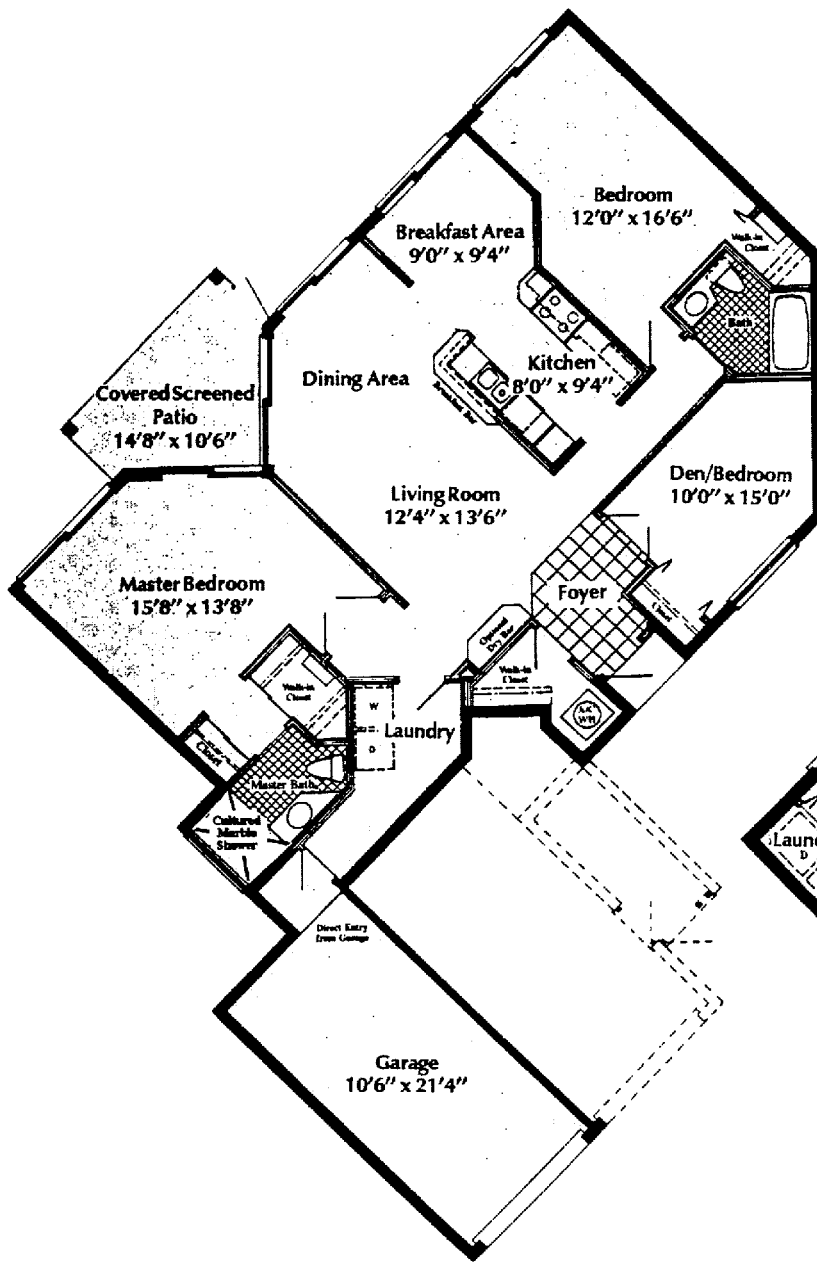
*All plans, dimensions, and information are approximate and are subject to change without notice. Developer reserves the right to modify site plan, amenities and future product.*

# DANFORTH

3 Bedrooms or 2 Bedrooms, Plus Study,  
Family Room, 2 Bathrooms, 2 Car Garage

HOMES BY  
**CENTEX**  
Built On Excellence

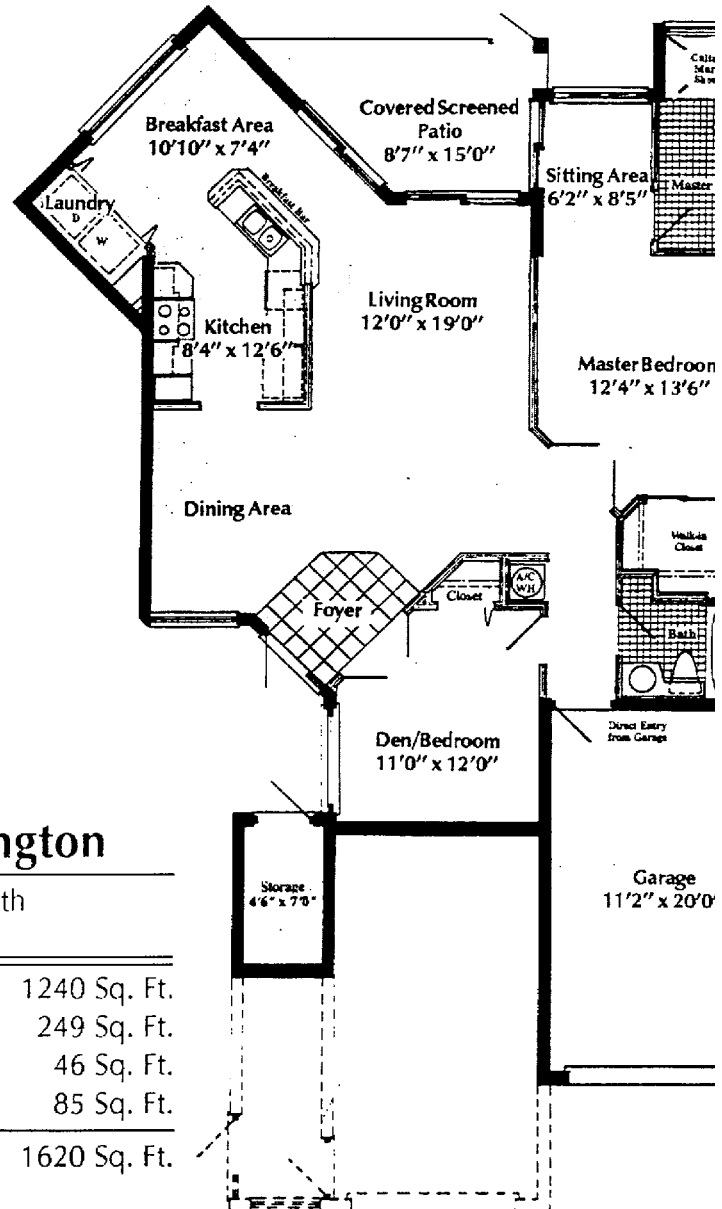




## The Arlington

2 Bedroom Plus Den/2 Bath  
First Floor

Living Area	1490 Sq. Ft.
Garage Area	276 Sq. Ft.
Patio Area	106 Sq. Ft.
<b>Total Area</b>	<b>1872 Sq. Ft.</b>

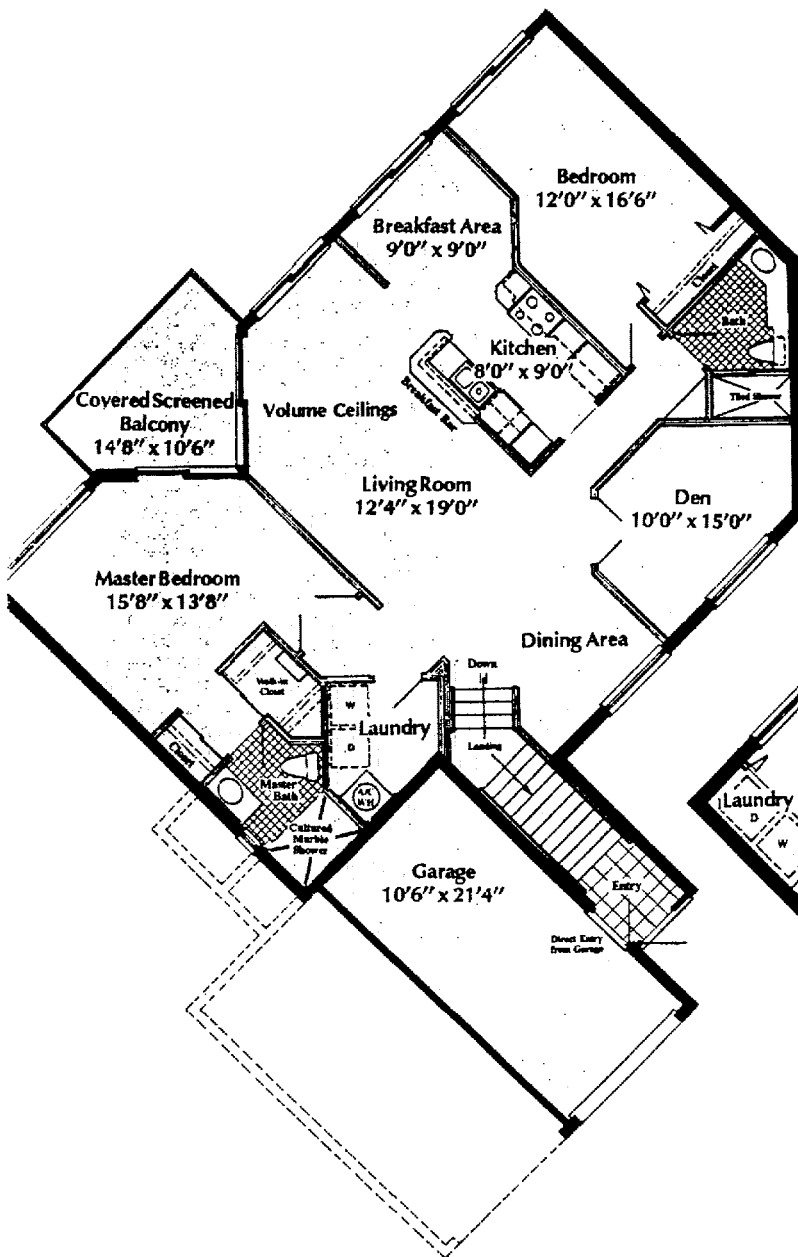


## The Barrington

2 Bedroom/2 Bath  
First Floor

Living Area	1240 Sq. Ft.
Garage Area	249 Sq. Ft.
Storage Area	46 Sq. Ft.
Patio Area	85 Sq. Ft.
<b>Total Area</b>	<b>1620 Sq. Ft.</b>

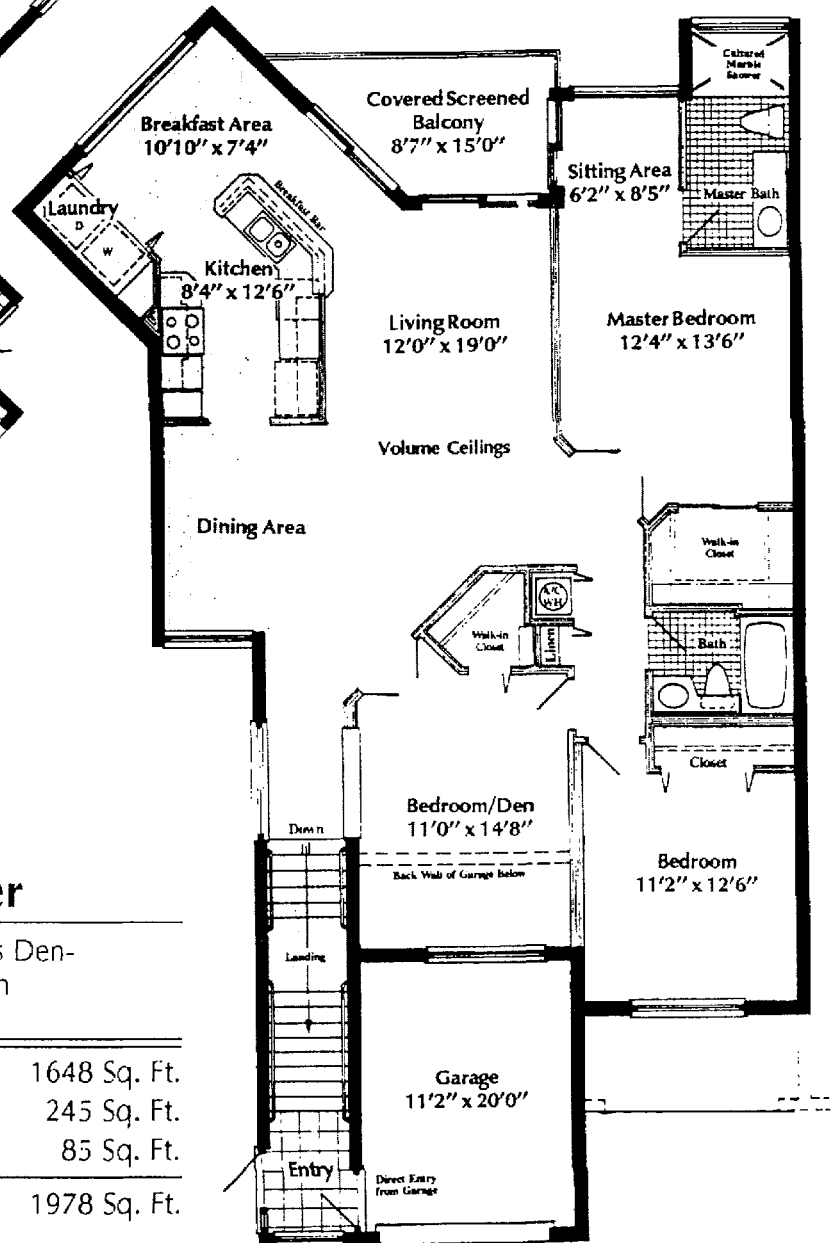
All dimensions are approximate.



## The Cambridge

Split Master Bedrooms/  
Plus Den/2 Bath  
Second Floor

Living Area	1562 Sq. Ft.
Garage Area	242 Sq. Ft.
Patio Area	106 Sq. Ft.
<b>Total Area</b>	<b>1910 Sq. Ft.</b>



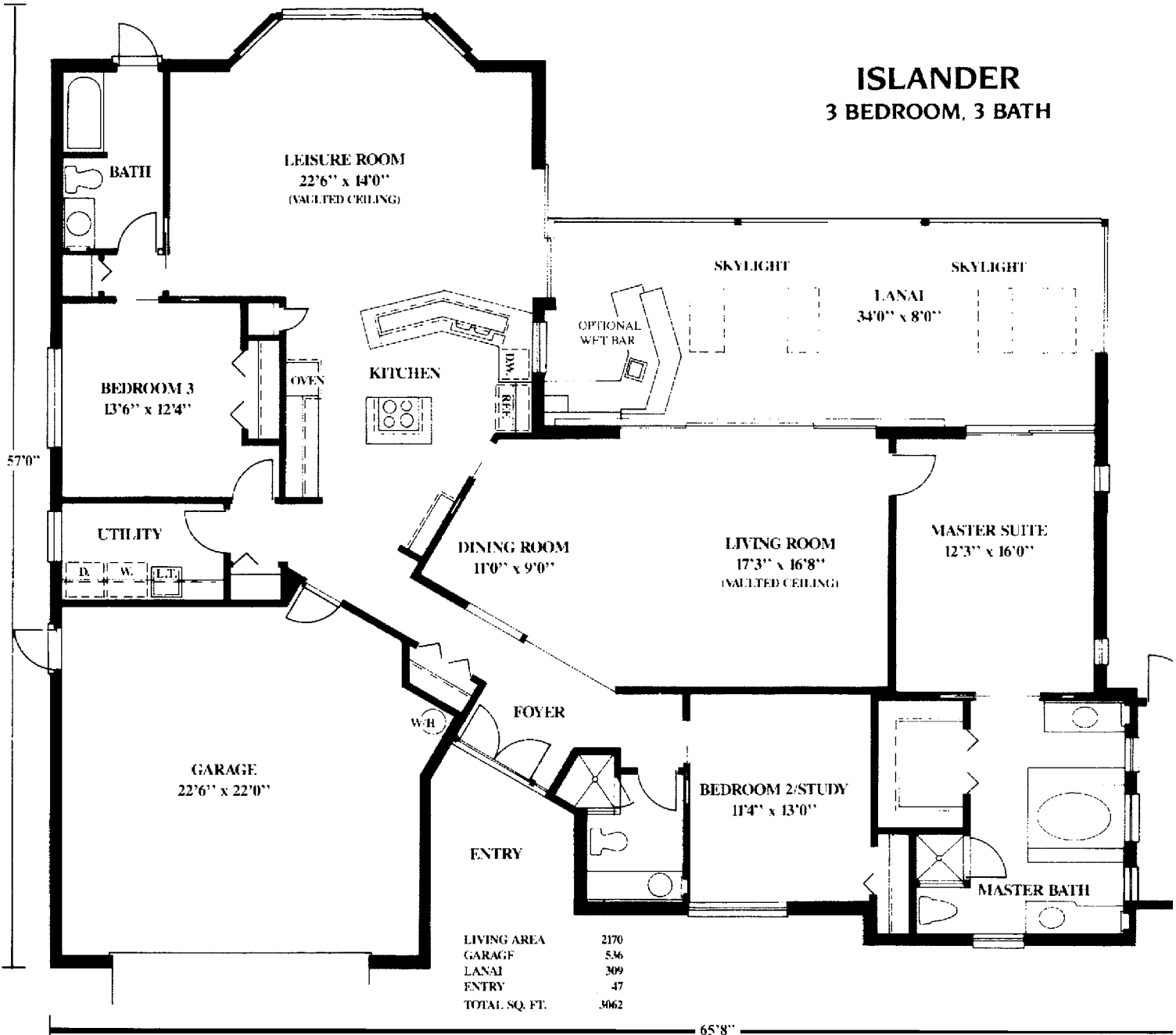
## The Dover

2 Bedroom Plus Den-  
Bedroom/2 Bath  
Second Floor

Living Area	1648 Sq. Ft.
Garage Area	245 Sq. Ft.
Patio Area	85 Sq. Ft.
<b>Total Area</b>	<b>1978 Sq. Ft.</b>

# BERKSHIRE LAKES

## ISLANDER 3 BEDROOM, 3 BATH

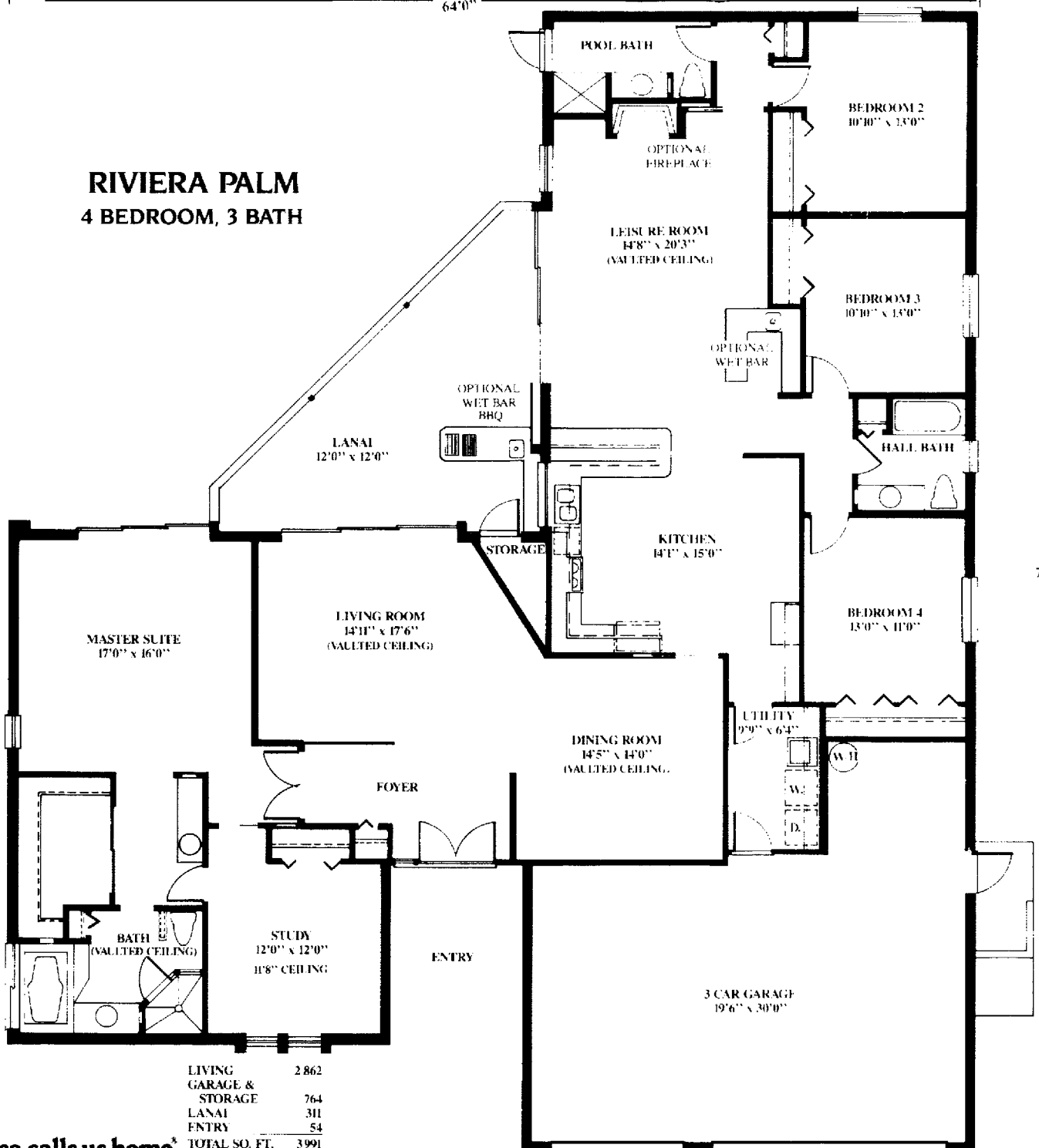




# BERKSHIRE LAKES

64'0"

## RIVIERA PALM 4 BEDROOM, 3 BATH



LIVING	2 862
GARAGE & STORAGE	764
LANAI	311
ENTRY	54
<b>TOTAL SQ. FT.</b>	<b>3 991</b>

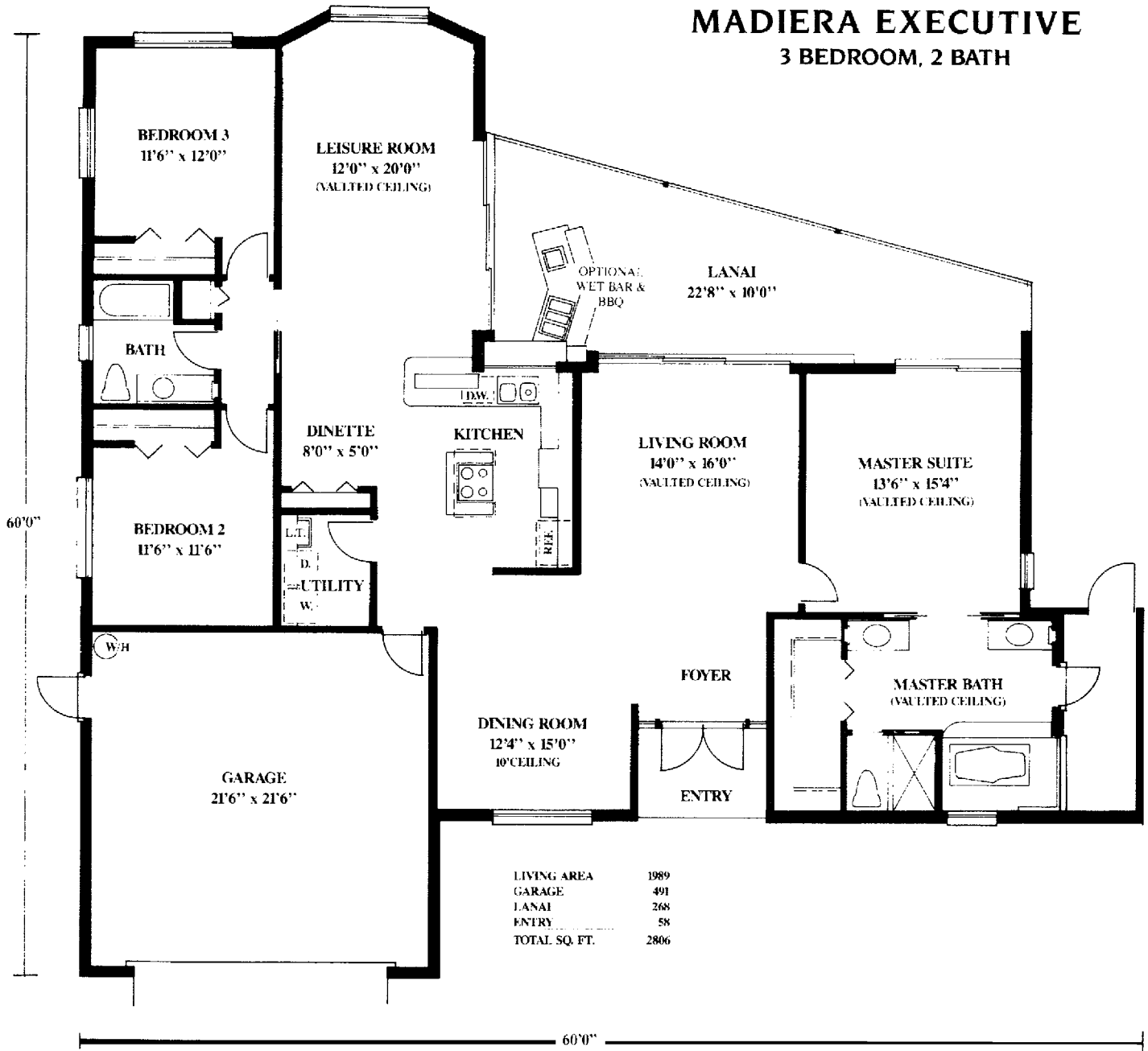
America calls us home<sup>SM</sup>  
**US·HOME**<sup>®</sup>  
 LISTED ON THE NEW YORK STOCK EXCHANGE

All dimensions as shown in the sales literature and as observed in the models are approximate and may vary with the actual construction. U.S. Home reserves the right to substitute brands or material for similar ones depending upon availability without advance notice to the buyer.



# BERKSHIRE LAKES

## MADIERA EXECUTIVE 3 BEDROOM, 2 BATH



America calls us home<sup>®</sup>

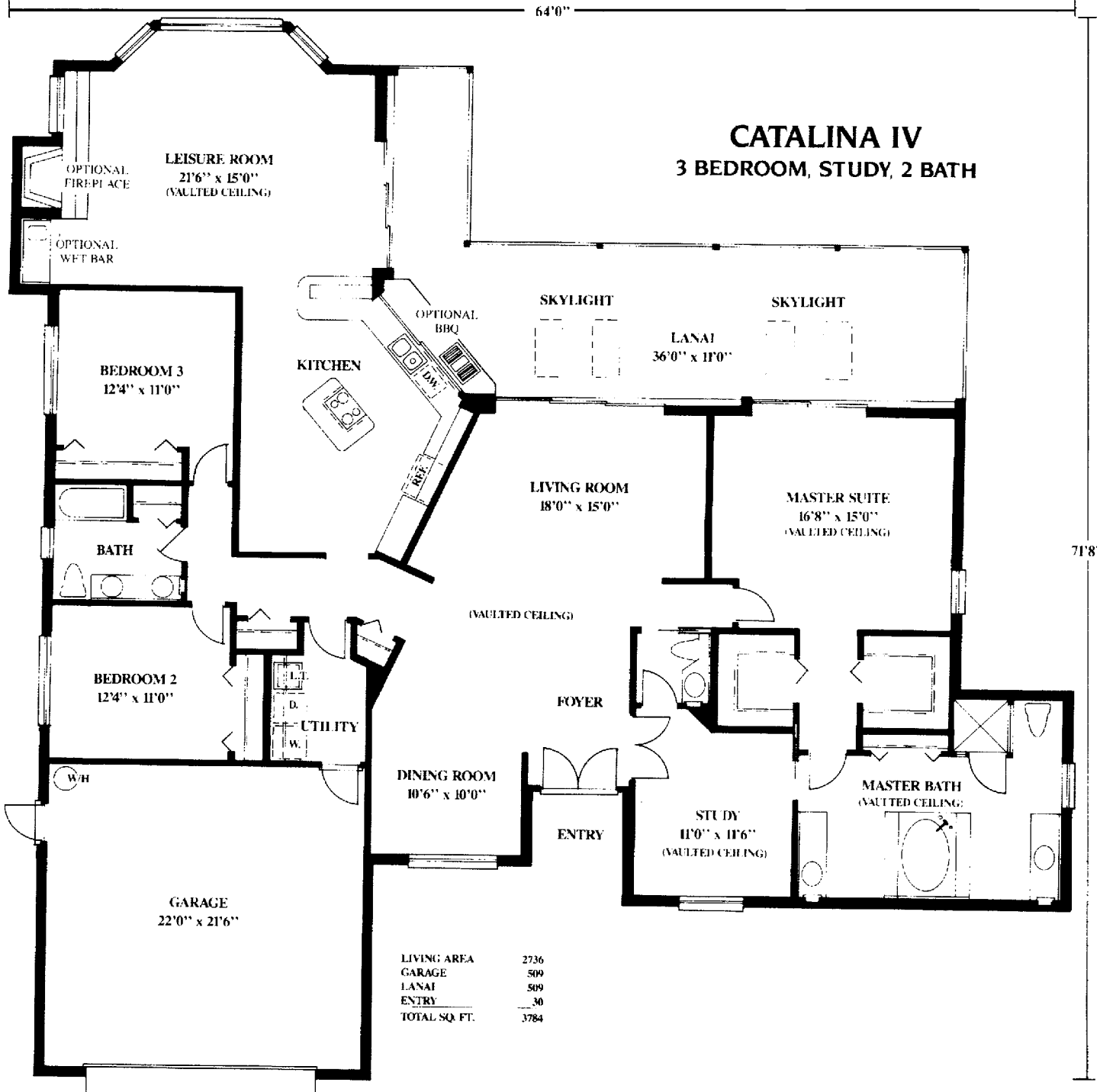
**US·HOME**<sup>®</sup>

LISTED ON THE NEW YORK STOCK EXCHANGE

All dimensions as shown in the sales literature and as observed in the models are approximate and may vary with the actual construction. U.S. Home reserves the right to substitute brands or material for similar ones depending upon availability without advance notice to the buyer.



# BERKSHIRE LAKES



America calls us home<sup>®</sup>  
**US·HOME<sup>®</sup>**  
 LISTED ON THE NEW YORK STOCK EXCHANGE

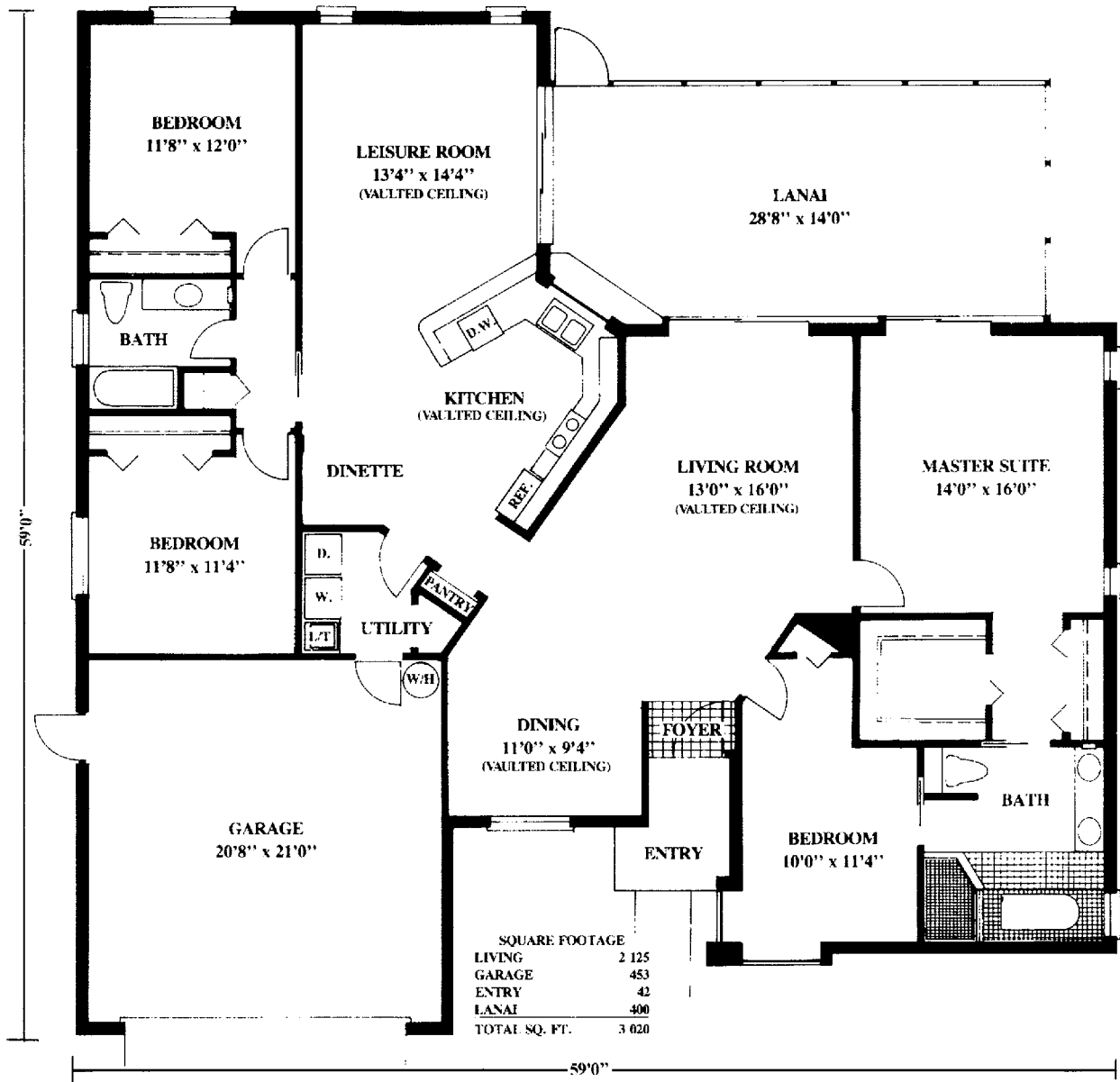
All dimensions as shown in the sales literature and as observed in the models are approximate and may vary with the actual construction. U.S. Home reserves the right to substitute brands or material for similar ones depending upon availability without advance notice to the buyer.

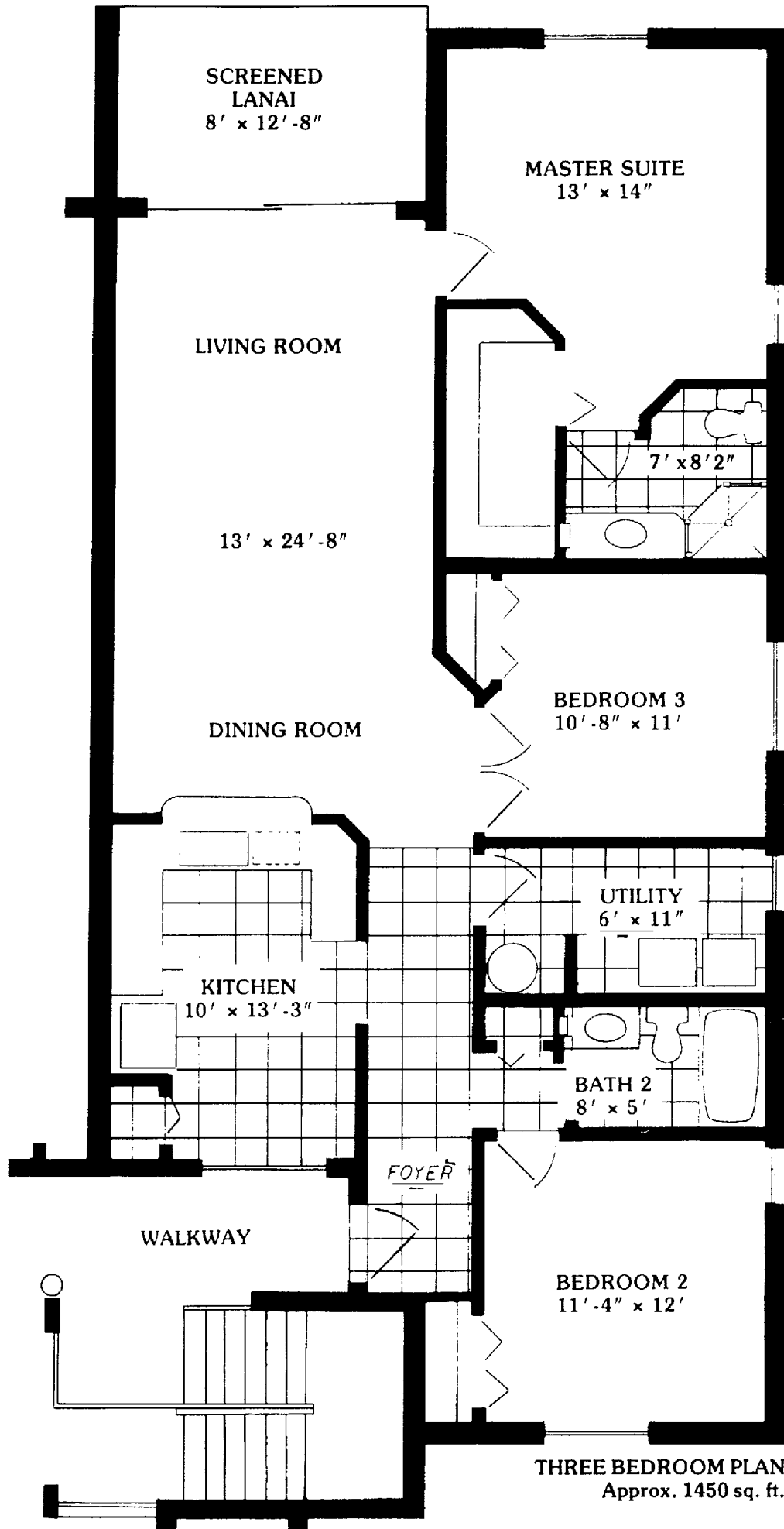




# BERKSHIRE LAKES

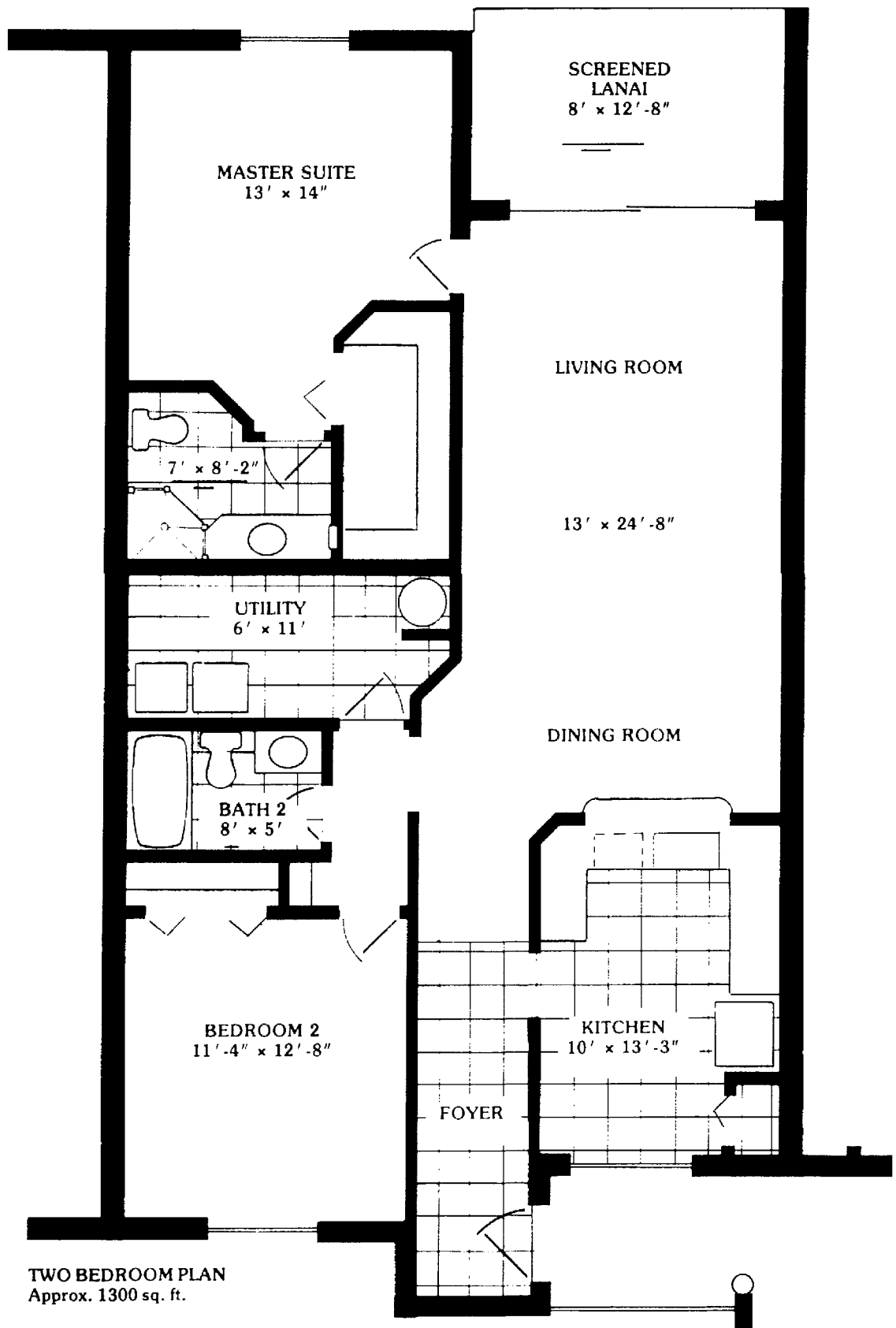
## STRATFORD 4 BEDROOM, 2 BATH





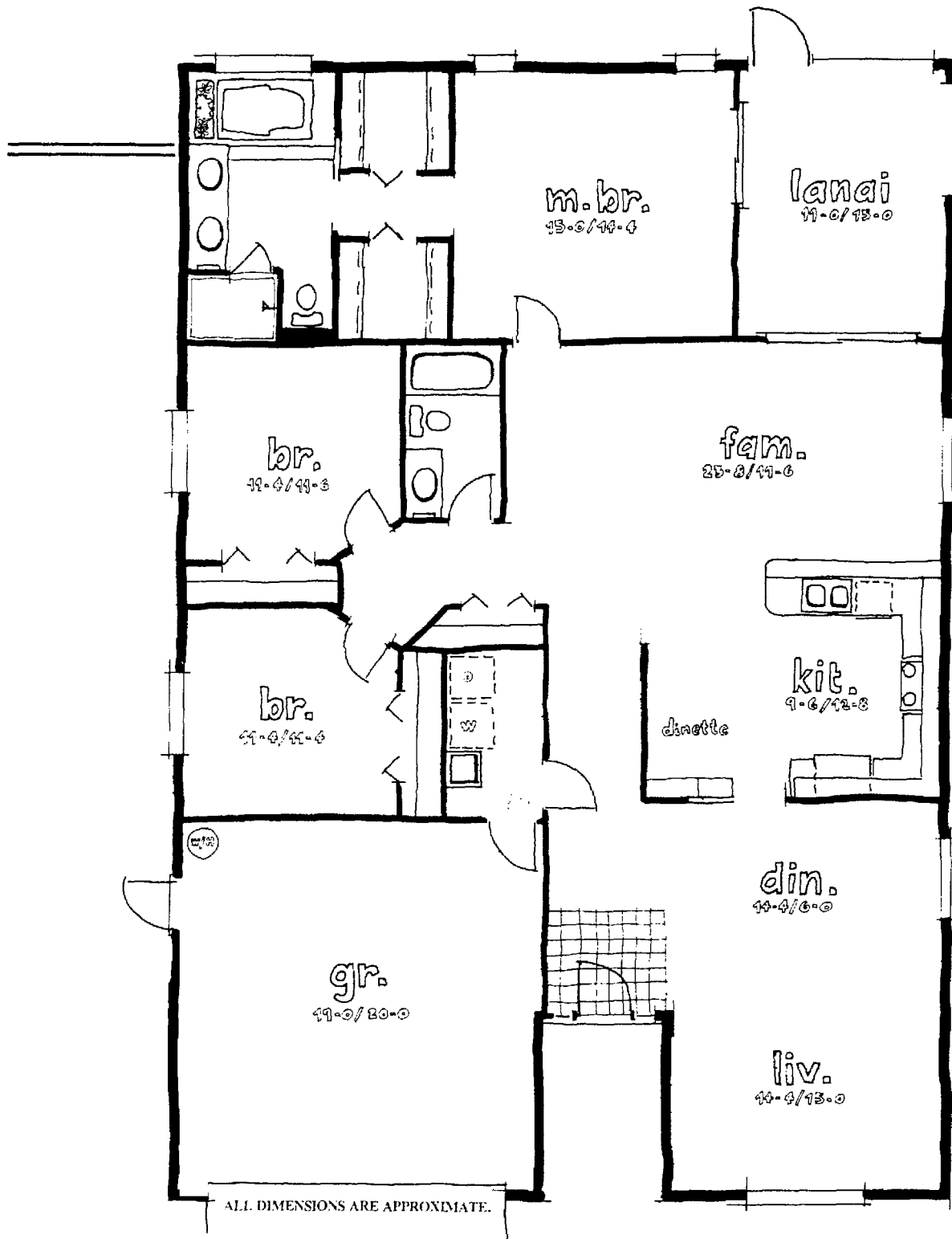
aterials and design.

**THREE BEDROOM PLAN**  
Approx. 1450 sq. ft.



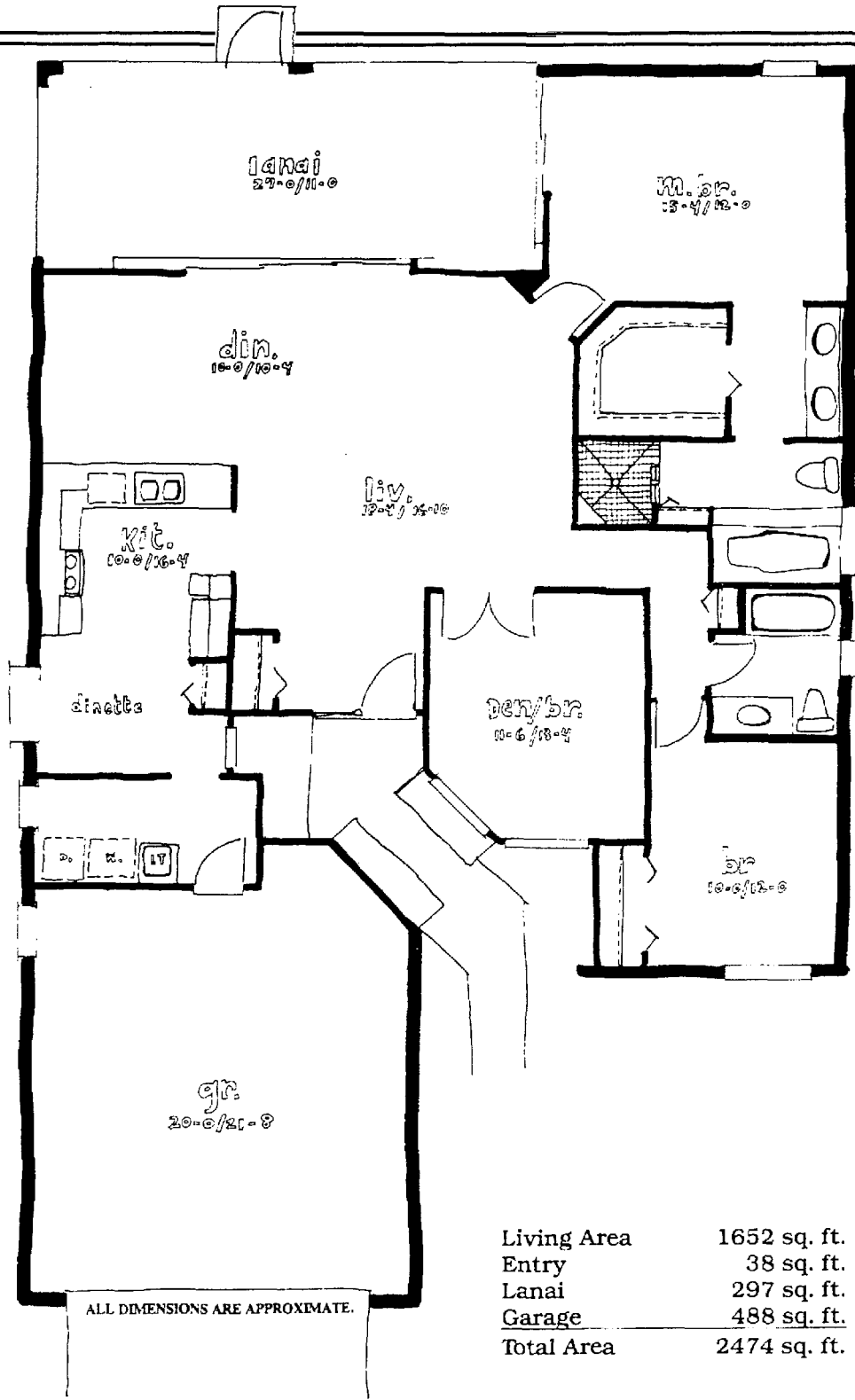
**TWO BEDROOM PLAN**  
 Approx. 1300 sq. ft.

# Norfol



Living Area	1961 sq. ft.
Entry	63 sq. ft.
Lanai	170 sq. ft.
Garage	410 sq. ft.
<b>Total Area</b>	<b>2604 sq. ft.</b>

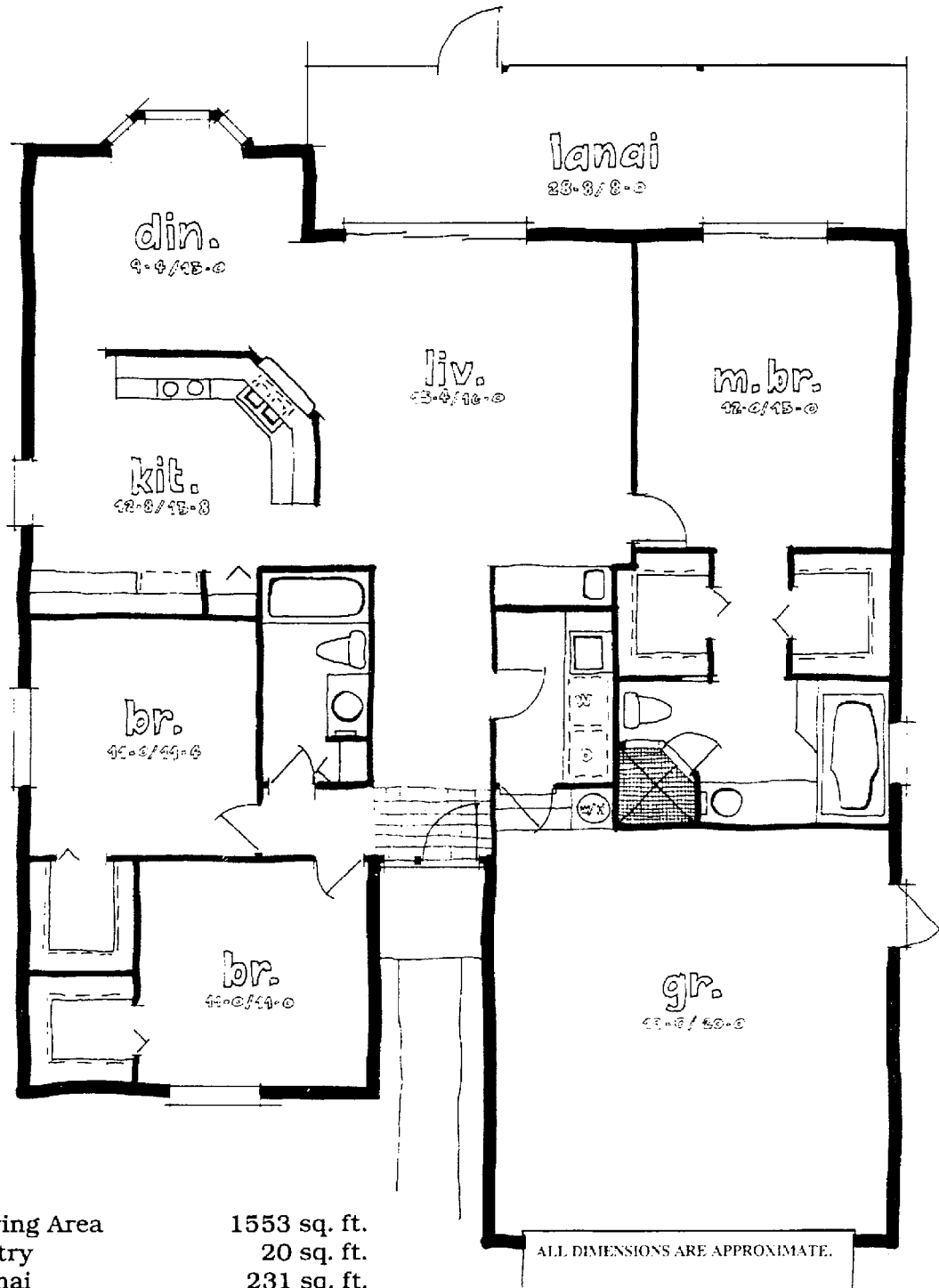
All dimensions as shown in the sales literature and as observed in the models are approximate and may vary with the actual construction. U.S. Home reserves the right to substitute brands or materic



Living Area	1652 sq. ft.
Entry	38 sq. ft.
Lanai	297 sq. ft.
Garage	488 sq. ft.
<b>Total Area</b>	<b>2474 sq. ft.</b>

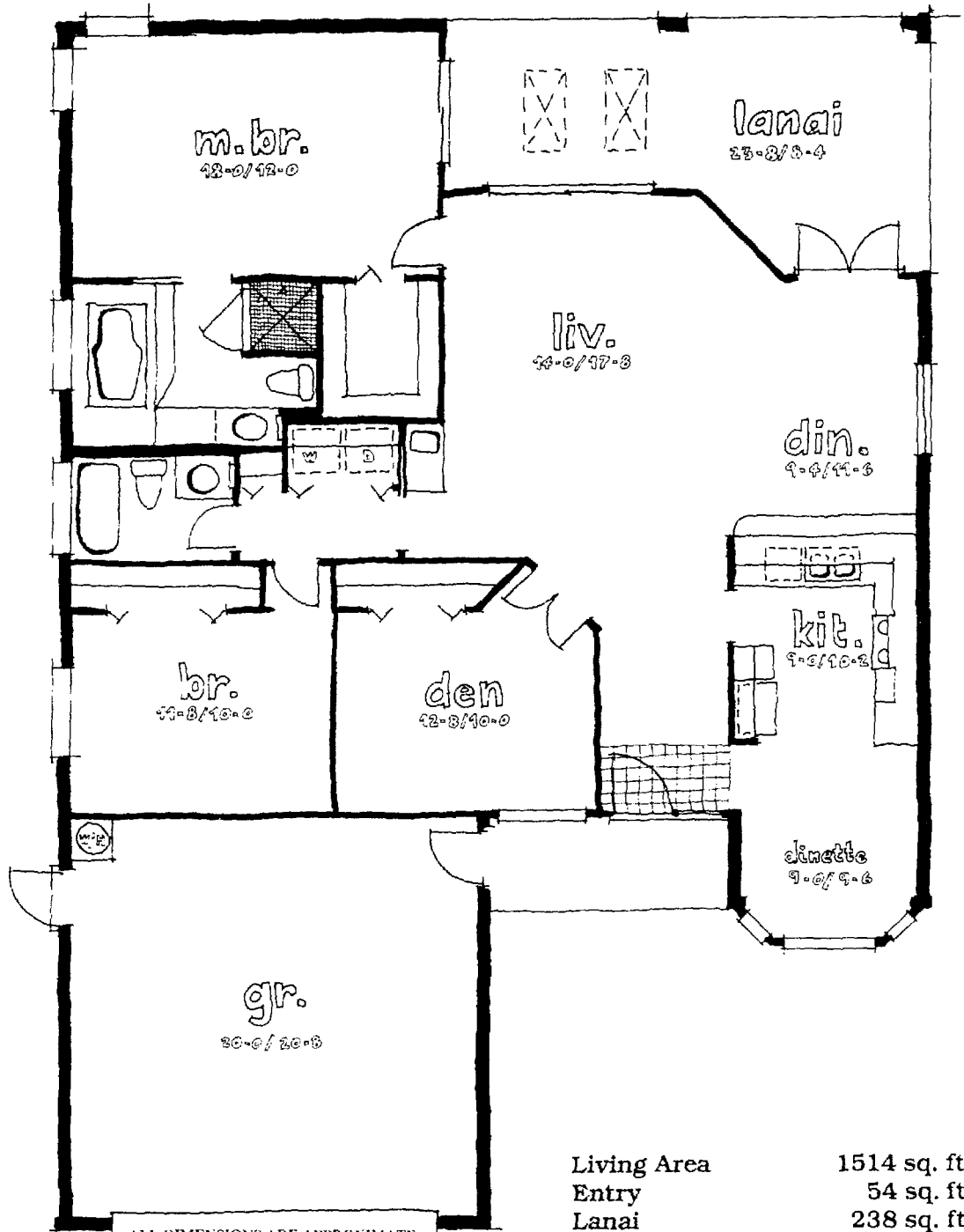
All dimensions as shown in the sales literature and as observed in the models are approximate and may vary with the actual construction. U.S. Home reserves the right to substitute brands or materials for similar ones depending upon availability without advance notice to the buyer.

# Sheffield



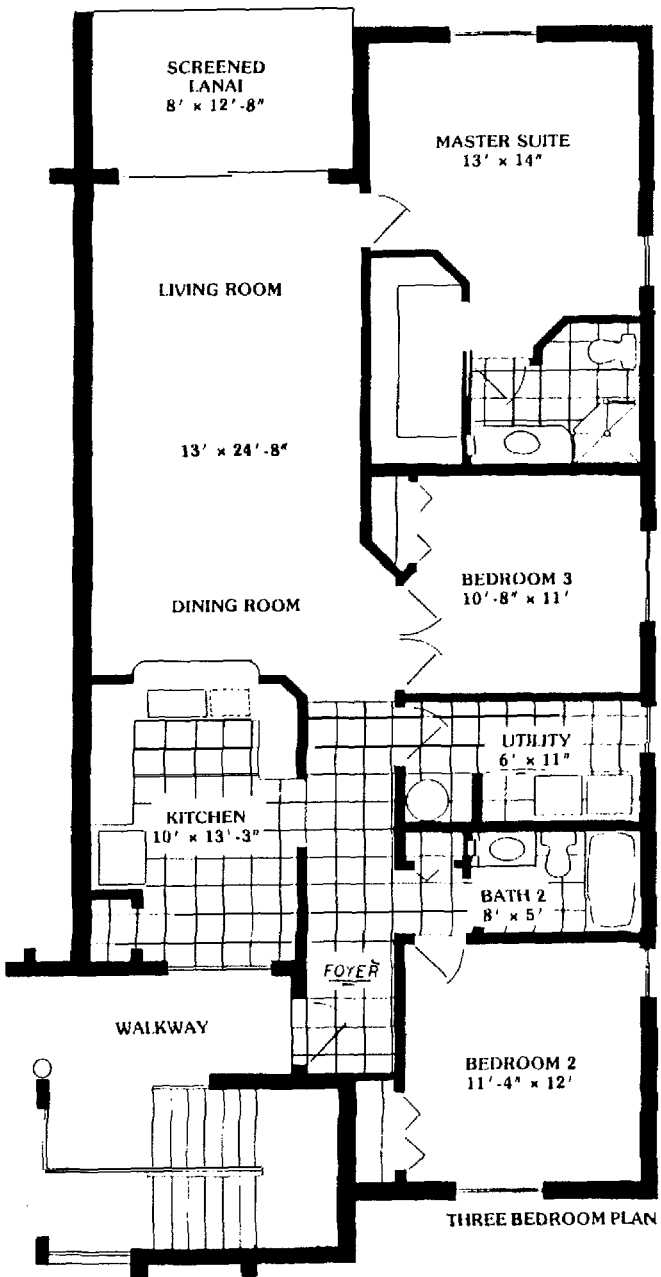
Living Area	1553 sq. ft.
Entry	20 sq. ft.
Lanai	231 sq. ft.
Garage	431 sq. ft.
<b>Total Area</b>	<b>2235 sq. ft.</b>

All dimensions as shown in the sales literature and as observed in the models are approximate and may vary with the actual construction. U.S. Home reserves the right to substitute brands or materials for similar ones depending upon availability without advance notice to the buyer.



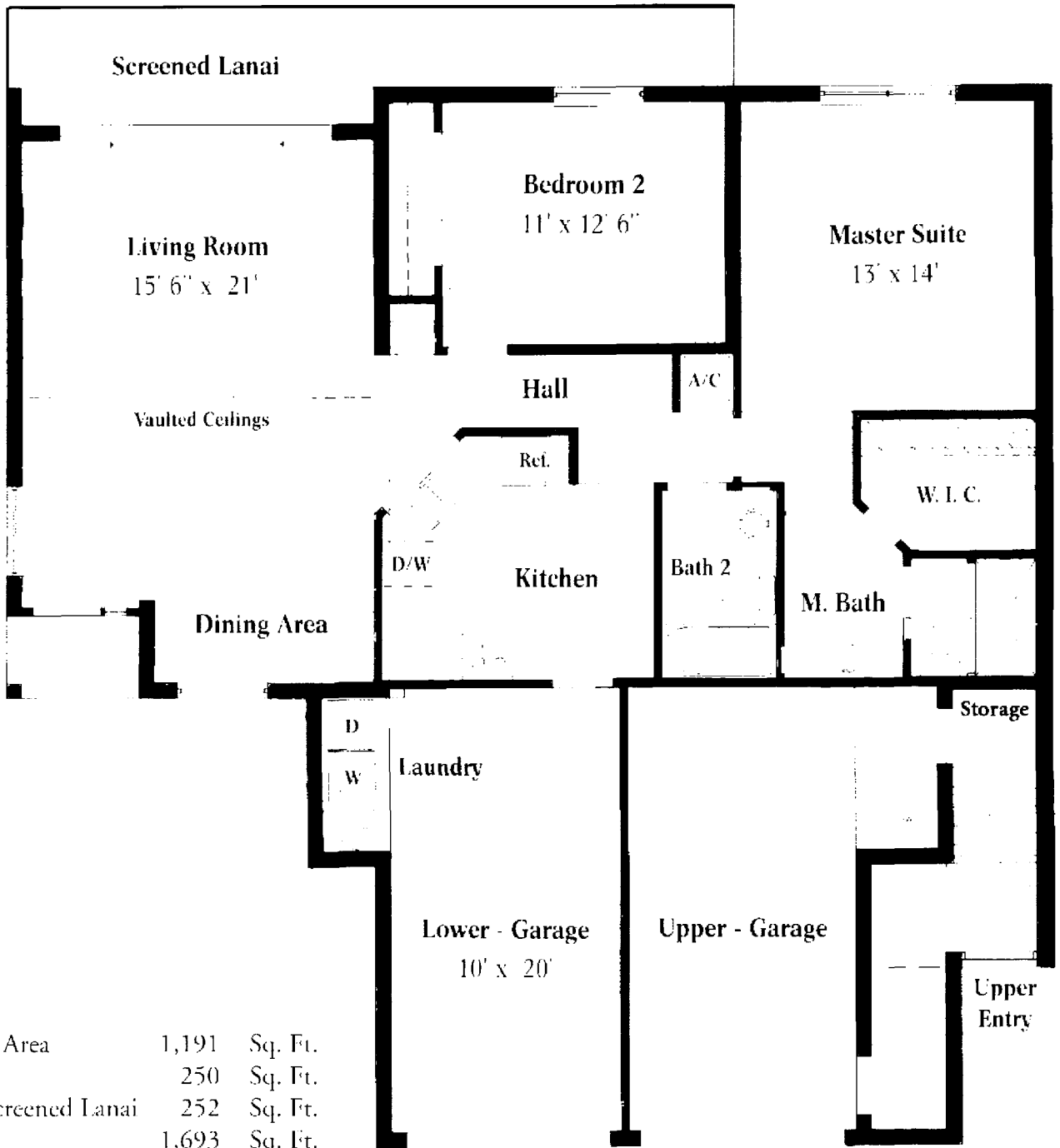
Living Area	1514 sq. ft.
Entry	54 sq. ft.
Lanai	238 sq. ft.
Garage	441 sq. ft.
<b>Total Area</b>	<b>2247 sq. ft.</b>

All dimensions as shown in the sales literature and as observed in the models are approximate and may vary with the actual construction. U.S. Home reserves the right to substitute brands or materials for similar ones depending upon availability without advance notice to the buyer.

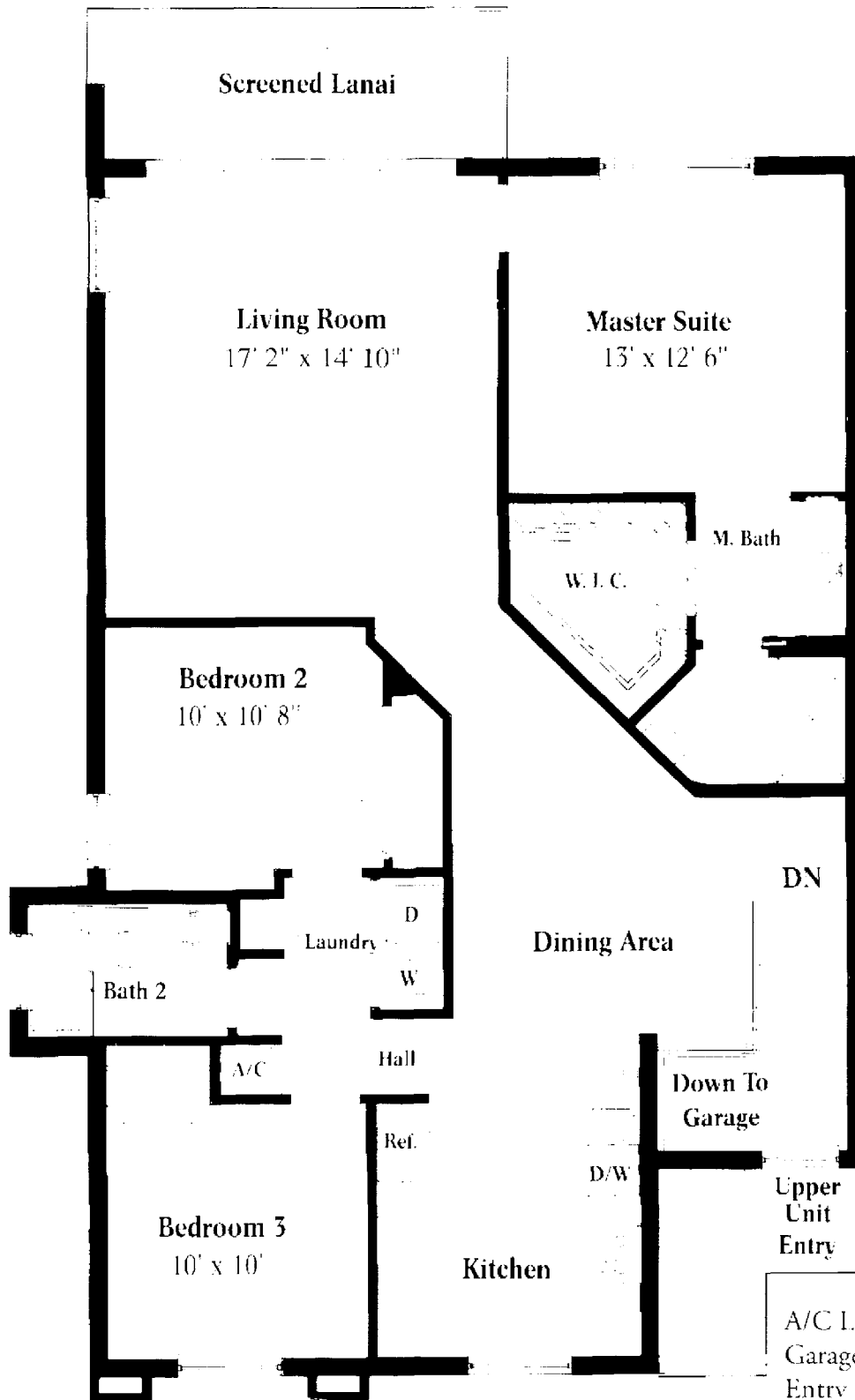


THREE BEDROOM PLAN





All dimensions are approximate and subject to change without notice.



A/C Living Area	1,421	Sq. Ft
Garage	237	Sq. Ft
Entry & Screened Lanai	112	Sq. Ft
<b>Total</b>	<b>1,770</b>	<b>Sq. Ft</b>

All dimensions are approximate and subject to change without notice.