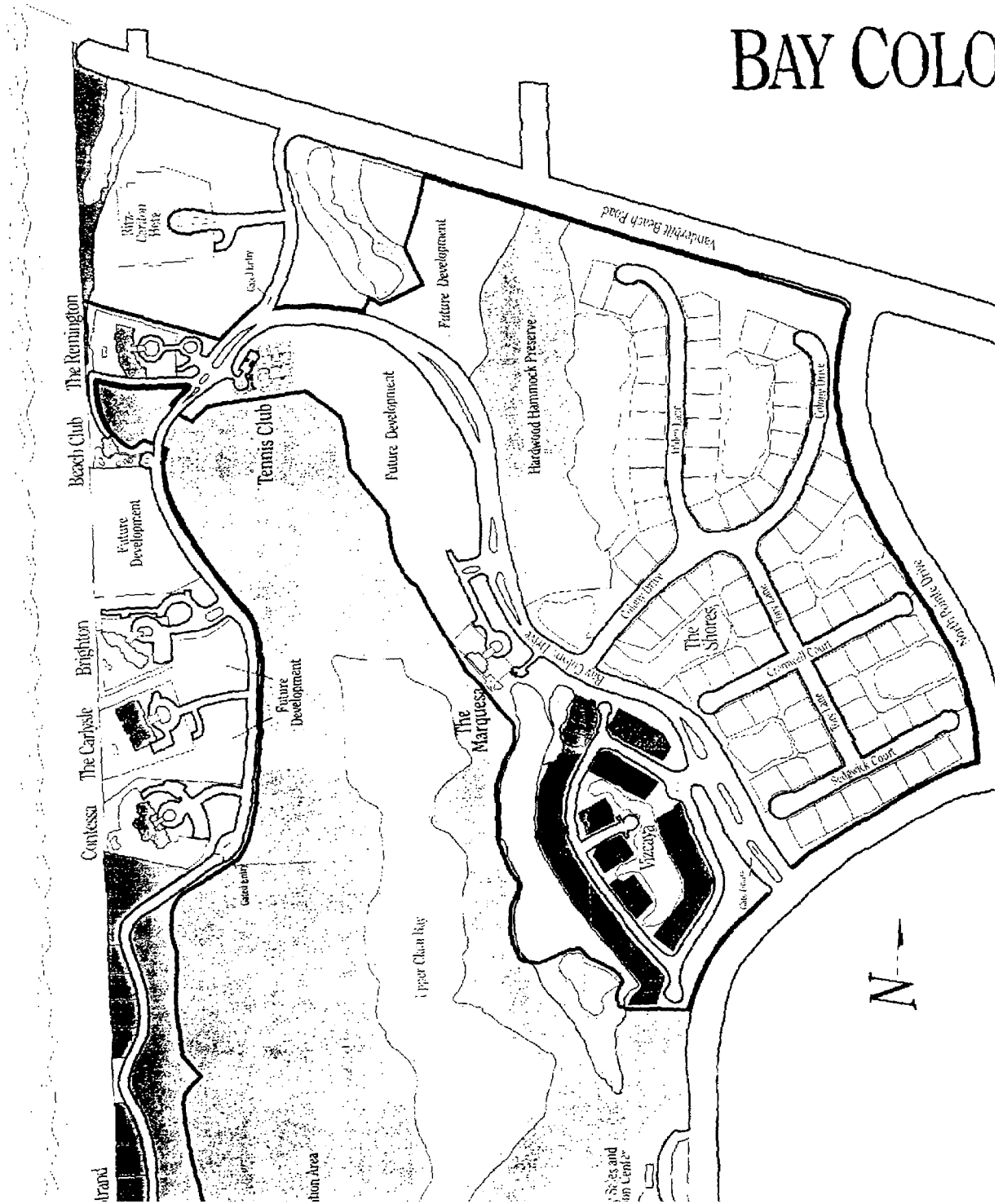


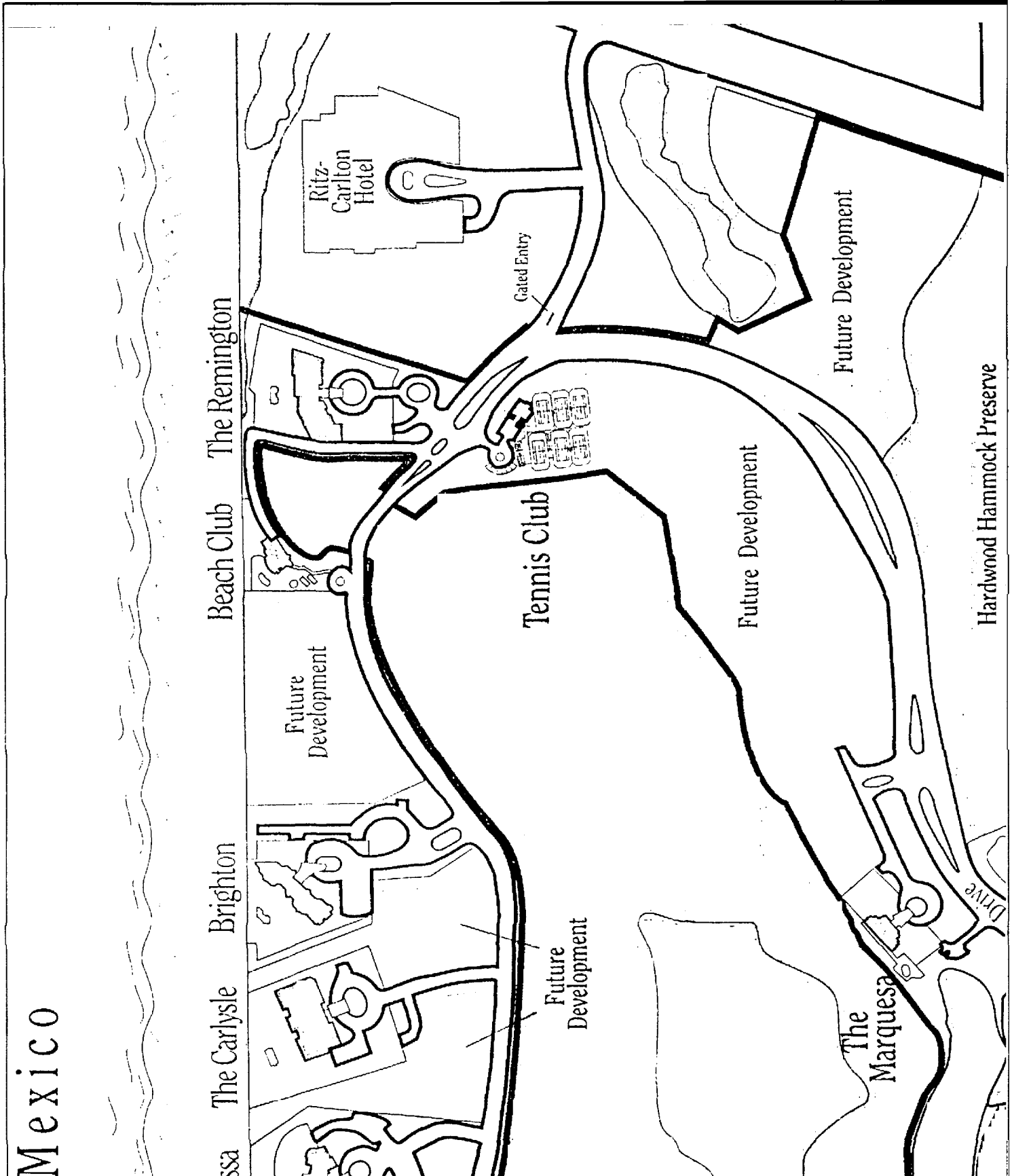
Gulf of Mexico

BAY COLO



CARROLL & CARROLL

LOCATION MAP

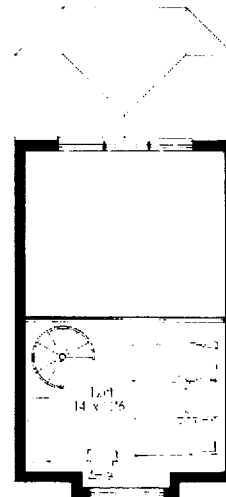
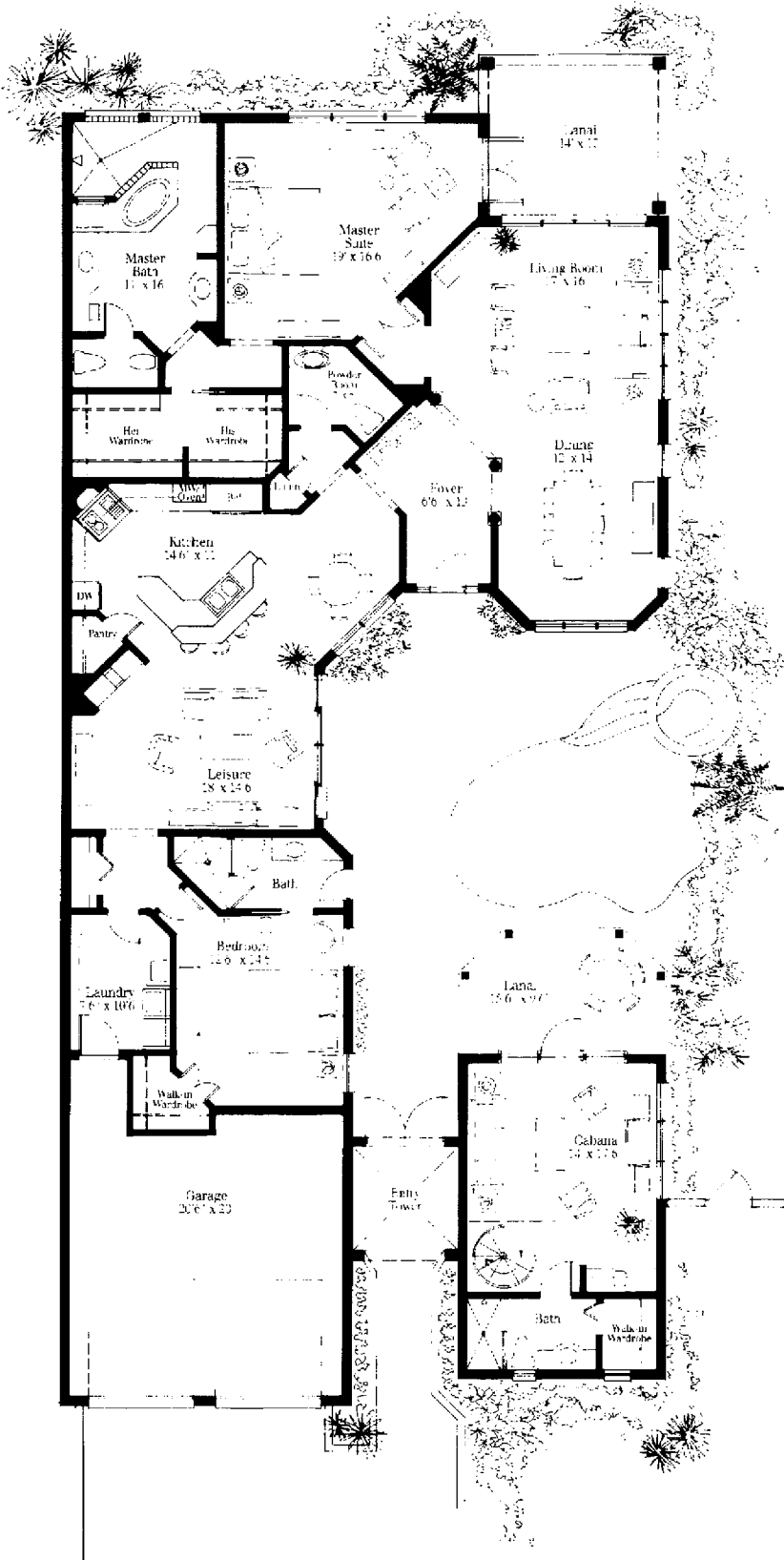


Villa La Palma

Villa Castile

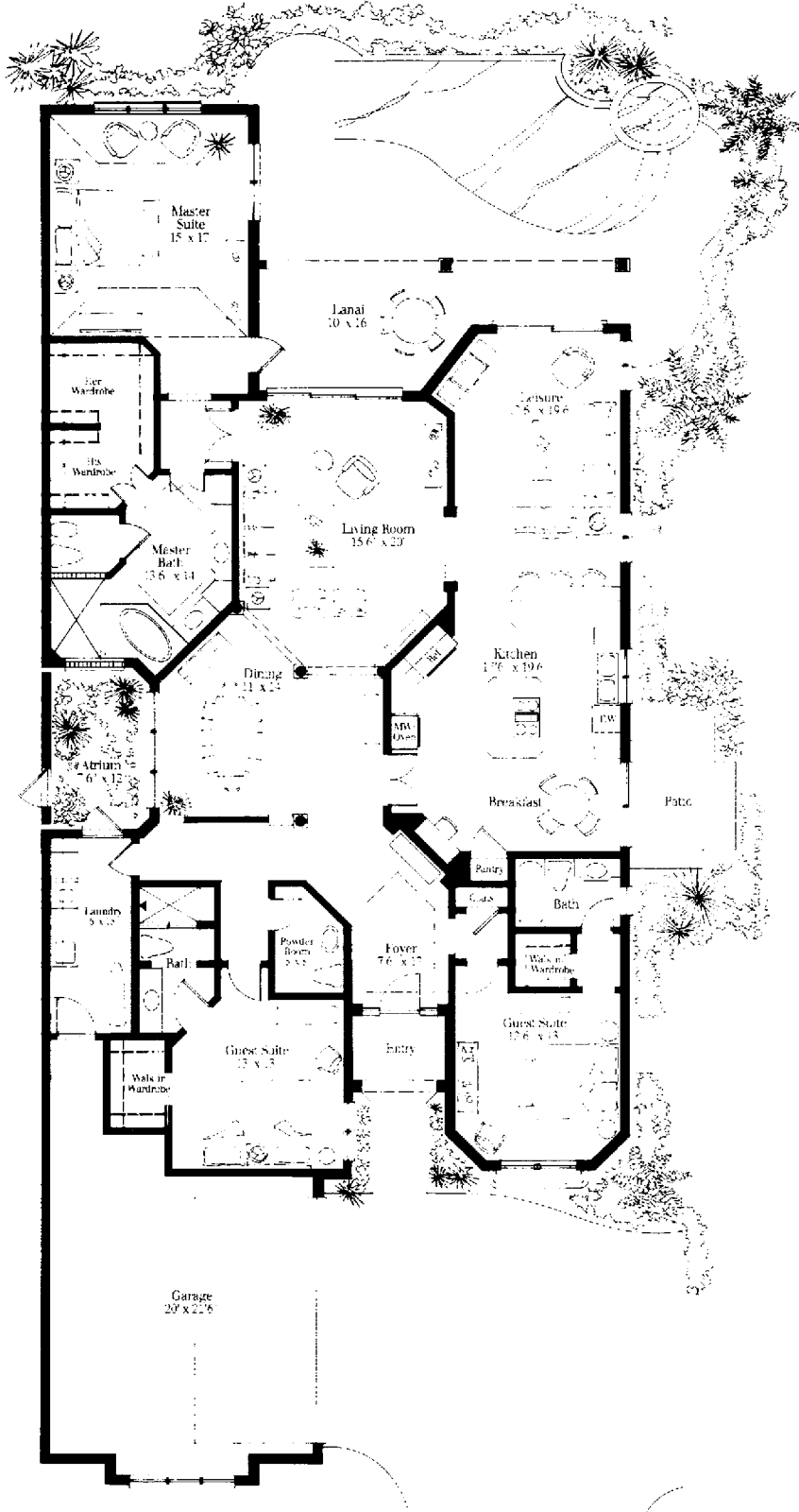
Air Conditioned Living Area	
First Floor	2,890 Square Feet
Cabana Loft	180 175 Square Feet
Total Air Conditioned	3,065 Square Feet
	3,070
Entry Tower	72 Square Feet
Covered Lanais	306 Square Feet
Garage	450 Square Feet
Total Square Feet Under Roof	3,893 Square Feet
	3,898

These drawings are conceptual only and are for the convenience reference. They should not be relied upon as representation express or implied, of the final detail of Villa La Palma at Bi Colony. The developer reserves the right to make modification alterations, and changes. Dimensions and square footage are approximate and may vary with actual construction. Dimensions are measured from interior surface of interior walls. Features or specifications are subject to change without notice.



Cabana Loft

Villa La Palma



Villa Madrid

Air Conditioned Living Area	2,840 2,870 Square Feet
Entry Portico	42 Square Feet
Covered Lanai	210 Square Feet
Garage	510 Square Feet
Total Square Feet Under Roof	3,602 3,632 Square Feet
Atrium	90 Square Feet

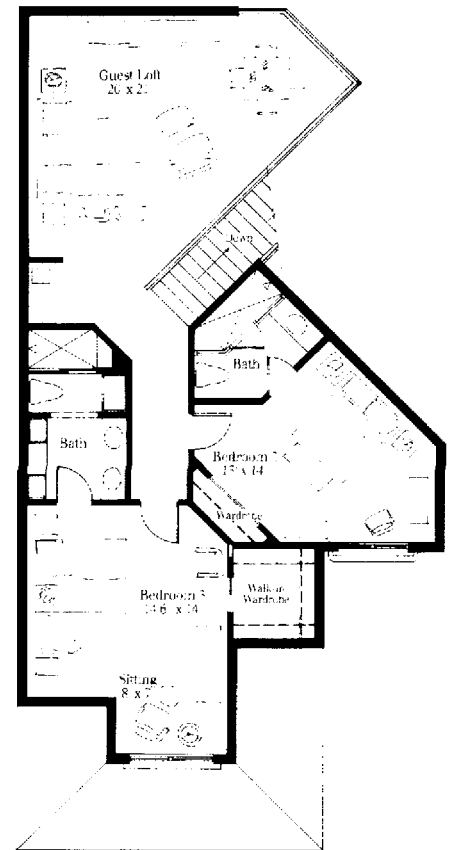
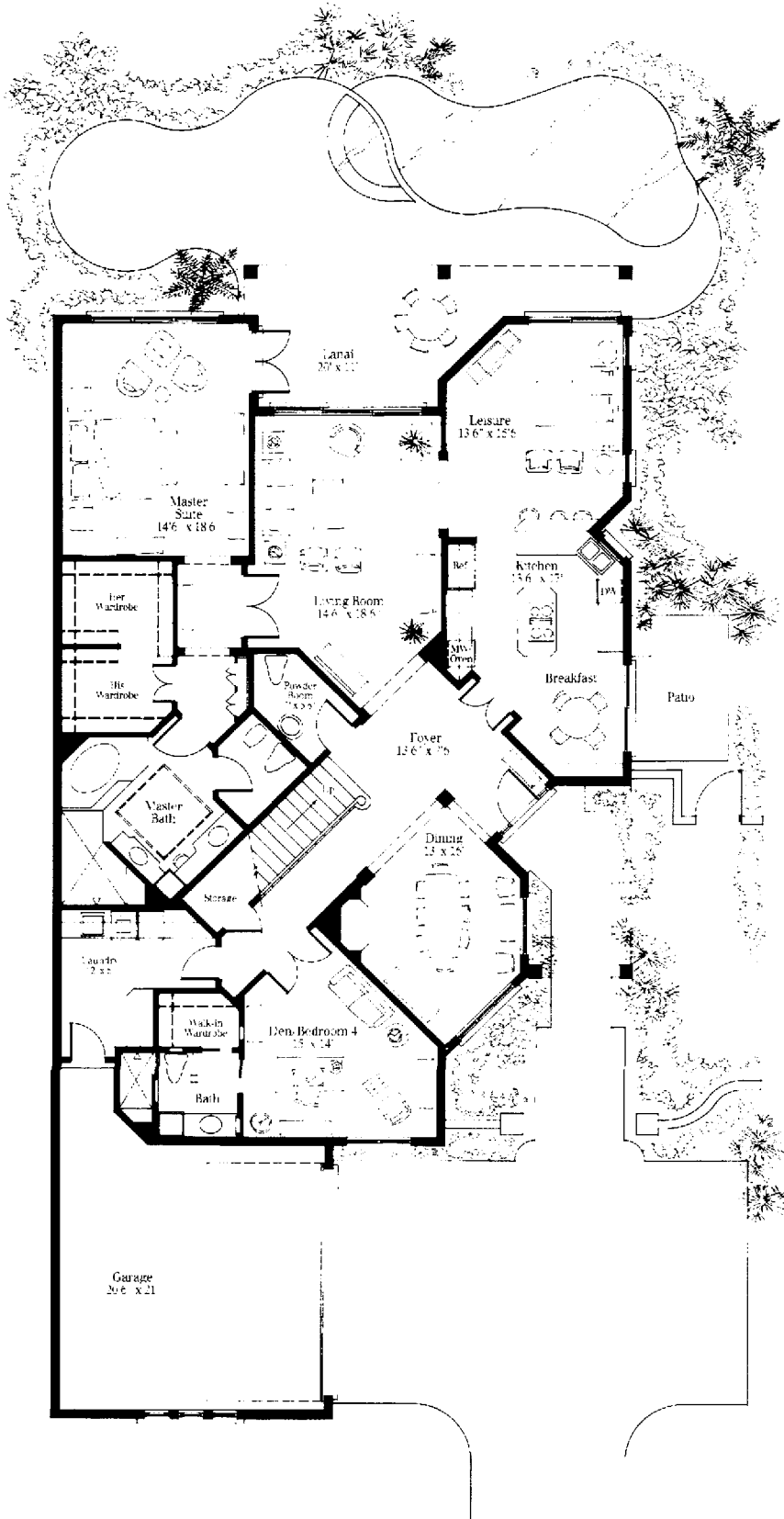
These drawings are conceptual only and are for the convenience of reference. They should not be relied upon as representations express or implied, of the final detail of Villa La Palma at Bay Colony. The developer reserves the right to make modifications, alterations, and changes. Dimensions and square footage are approximate and may vary with actual construction. Dimensions are measured from interior surface of interior walls. Features and specifications are subject to change without notice.

Villa La Palma

Villa Seville

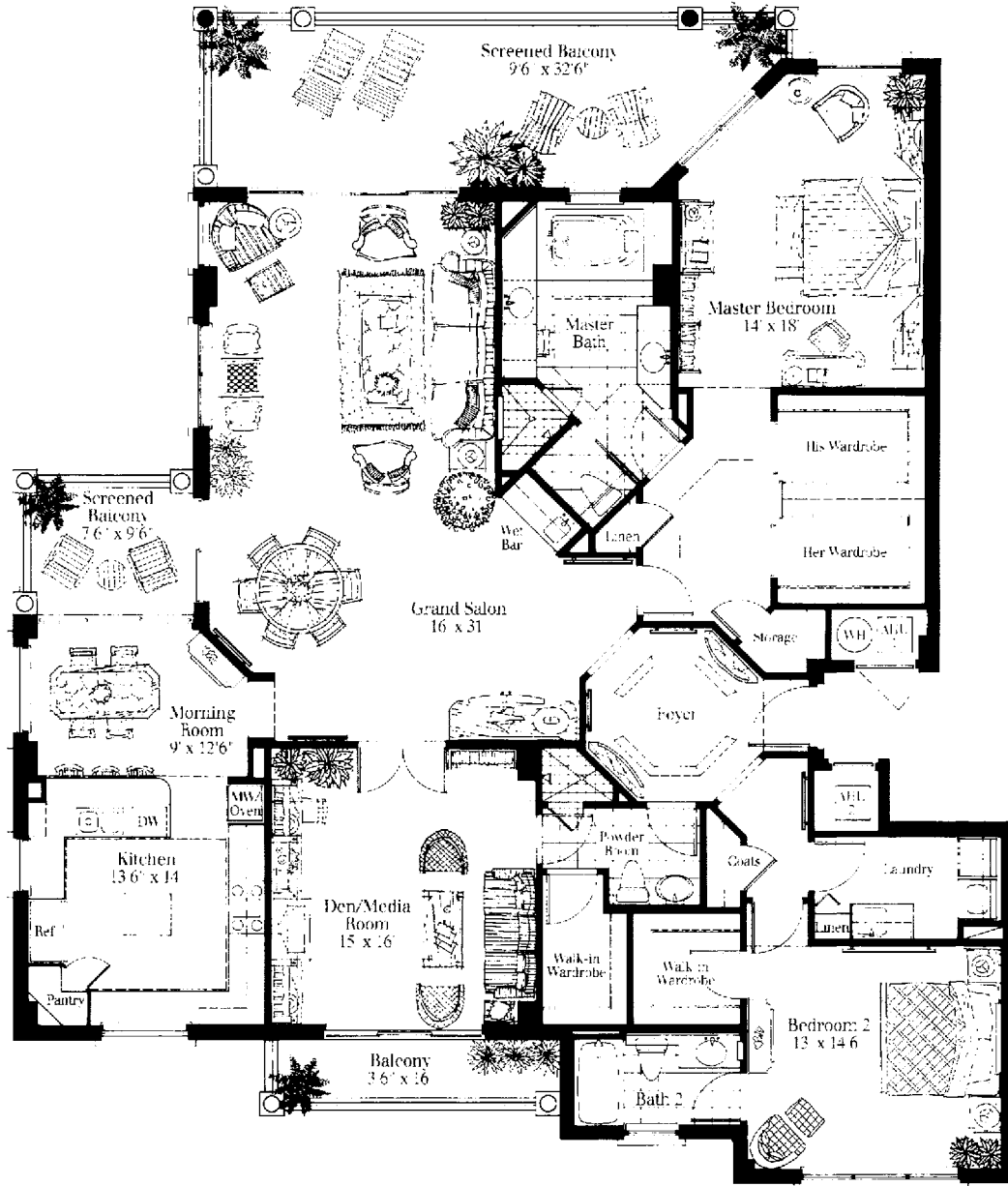
Air Conditioned Living Area	2,502 Square Feet
First Floor	1,148 - 980 Square Feet
Second Floor	1,148 - 980 Square Feet
Total Air Conditioned	3,482 Square Feet 3,650
Entry Portico	20 Square Feet
Covered Lanai	238 Square Feet
Garage	457 Square Feet
Total Square Feet Under Roof	4,297 Square Feet 4,365

These drawings are conceptual only and are for the convenience of reference. They should not be relied upon as representations, express or implied, of the final detail of Villa La Palma at Bay Colony. The developer reserves the right to make modifications, alterations, and changes. Dimensions and square footage are approximate and may vary with actual construction. Dimensions are measured from interior surface of interior walls. Features and specifications are subject to change without notice.



Second Floor

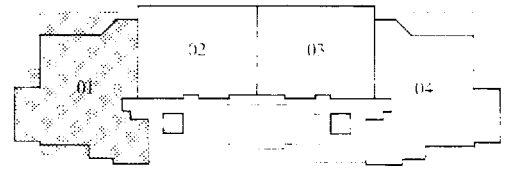
Mansion La Palma



01 Residence

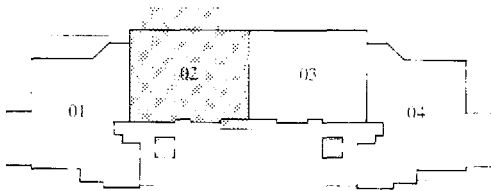
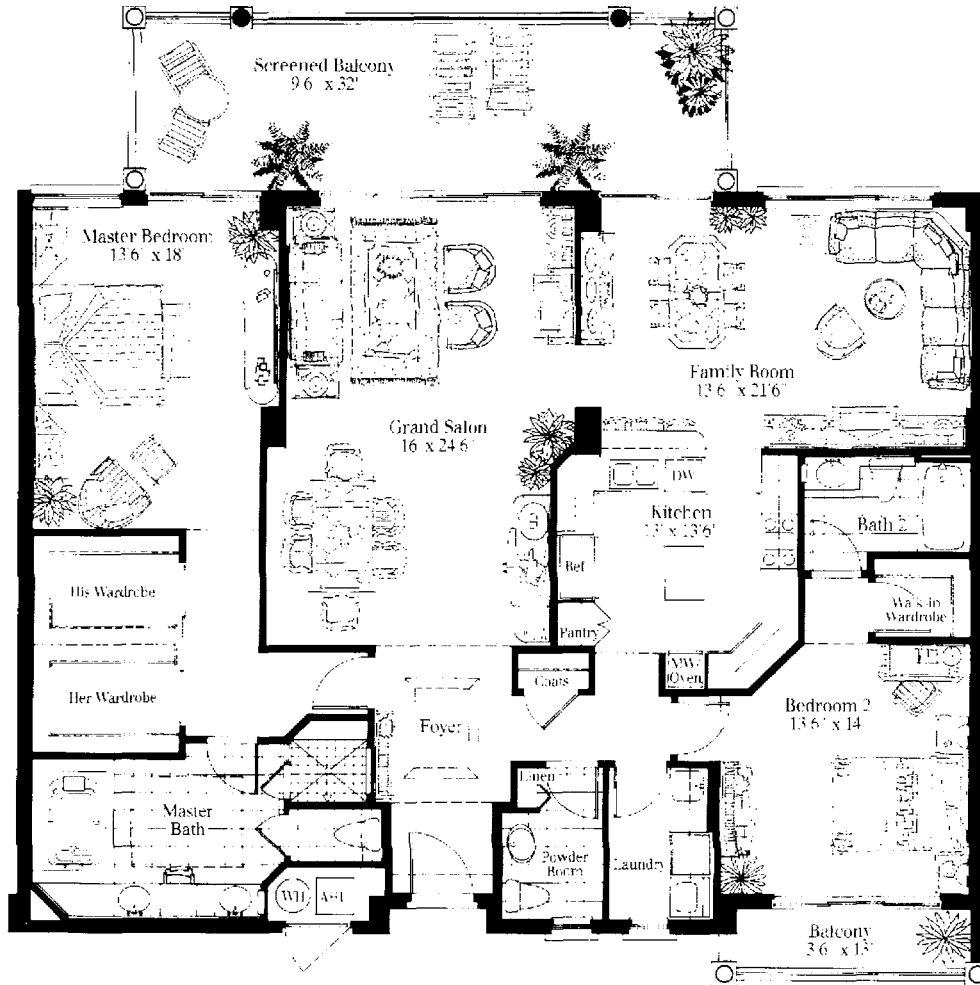
2 Bedrooms, 3 Baths, Den / Media Room

Enclosed Area	2,560 Square Feet
Screened Balcony Area	490 Square Feet
<hr/> Total Residence	<hr/> 3,050 Square Feet



These drawings are conceptual only and are for the convenience of reference. They should not be relied upon as representations, express or implied, of the final detail of Mansion La Palma at Bay Colony. The developer expressly reserves the right to make modifications, revisions, and changes which it deems desirable in its sole and absolute discretion. Dimensions and square footage are approximate and may vary with actual construction. Dimensions are measured from interior surface of interior walls. Square footage is measured from exterior surface of exterior walls and center line of common walls.

Mansion La Palma

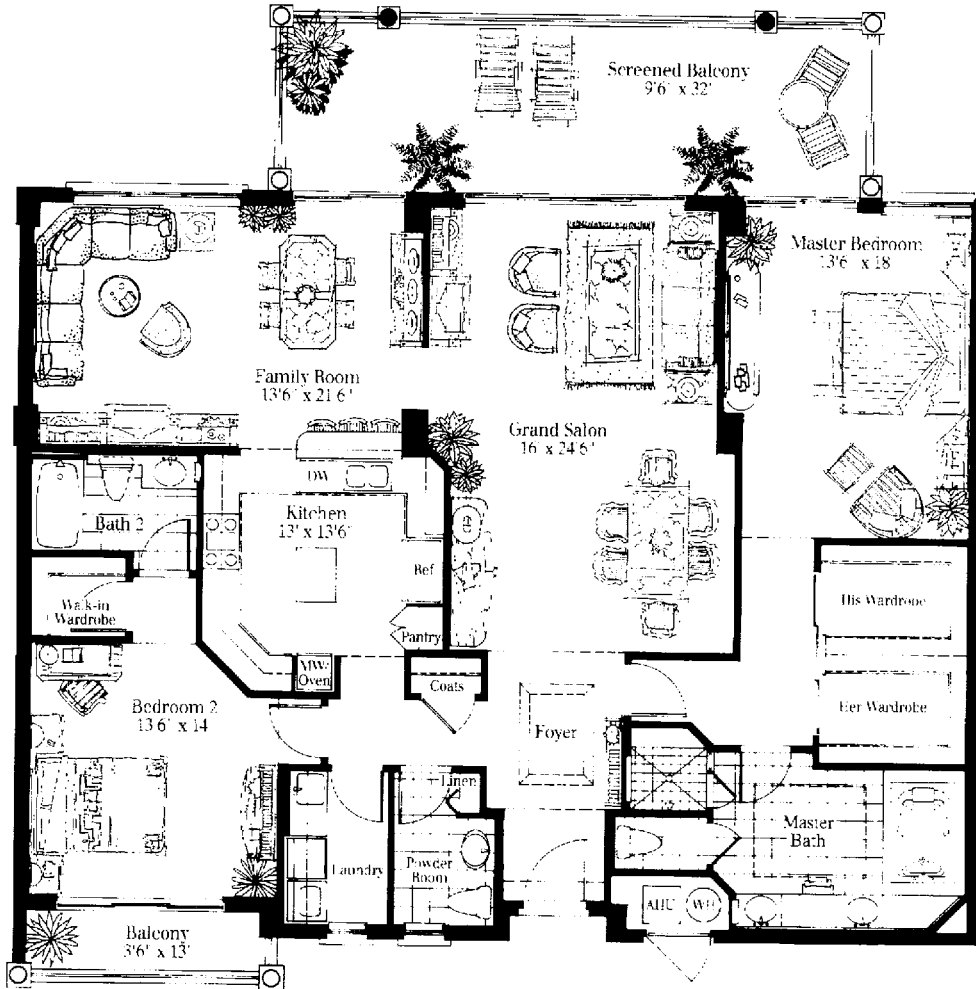


02 Residence 2 Bedrooms, 2 1/2 Baths, Family Room

Enclosed Area	2,110 Square Feet
Screened Balcony Area	380 Square Feet
Total Residence	2,490 Square Feet

These drawings are conceptual only and are for the convenience of reference. They should not be relied upon as representations, express or implied, of the final detail of Mansion La Palma at Bay Colony. The developer expressly reserves the right to make modifications, revisions, and changes which it deems desirable in its sole and absolute discretion. Dimensions and square footage are approximate and may vary with actual construction. Dimensions are measured from interior surface of interior walls. Square footage is measured from exterior surface of exterior walls and center line of common walls.

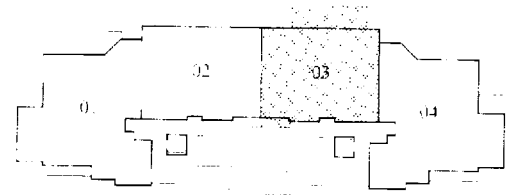
Mansion La Palma



03 Residence

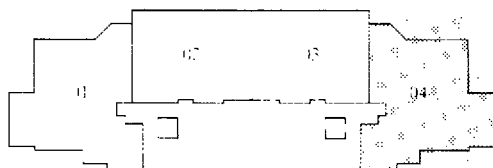
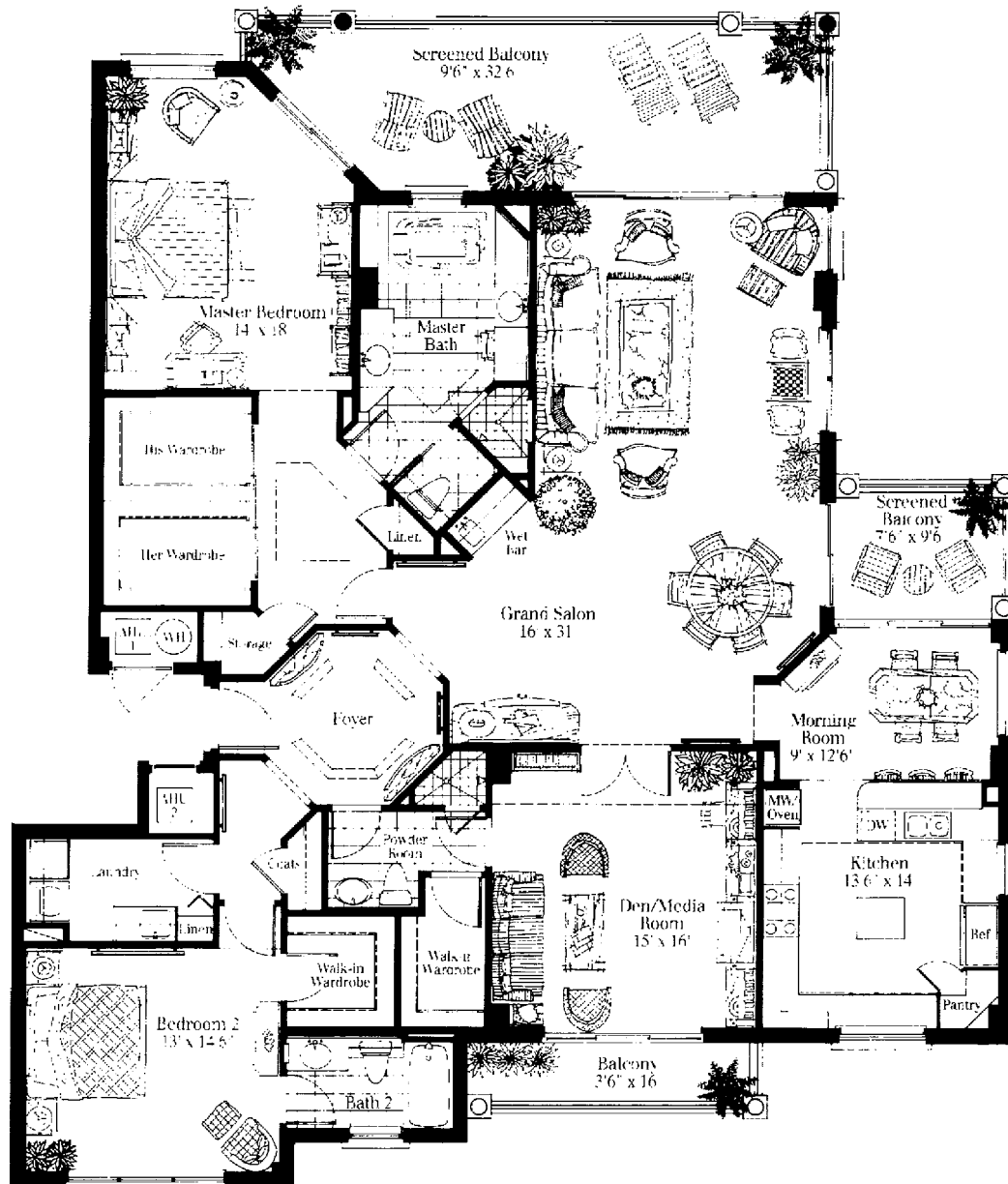
2 Bedrooms, 2 1/2 Baths, Family Room

Enclosed Area	2,210 Square Feet
Screened Balcony Area	380 Square Feet
<u>Total Residence</u>	<u>2,490 Square Feet</u>



These drawings are conceptual only and are for the convenience of reference. They should not be relied upon as representations, express or implied, of the final detail of Mansion La Palma at Bay Colony. The developer expressly reserves the right to make modifications, revisions, and changes which it deems desirable in its sole and absolute discretion. Dimensions and square footage are approximate and may vary with actual construction. Dimensions are measured from interior surface of interior walls. Square footage is measured from exterior surface of exterior walls and center line of common walls.

Mansion La Palma



04 Residence

2 Bedrooms, 3 Baths, Den / Media Room

Enclosed Area	2,560 Square Feet
Screened Balcony Area	490 Square Feet
Total Residence	3,050 Square Feet

These drawings are conceptual only and are for the convenience of reference. They should not be relied upon as representations, express or implied, of the final detail of Mansion La Palma at Bay Colony. The developer expressly reserves the right to make modifications, revisions, and changes which it deems desirable in its sole and absolute discretion. Dimensions and square footage are approximate and may vary with actual construction. Dimensions are measured from interior surface of interior walls. Square footage is measured from exterior surface of exterior walls and center line of common walls.

Exclusive Agents: Bay Colony Realty Associates, Inc. • 7637 Pelican Bay Boulevard • Naples, Florida 33963 • 813-598-3200 or 800-247-2990